

Summary of CEMARS certification:



Youth Hostels Association of New Zealand Inc.

Youth Hostel Association New Zealand Inc. meets the requirements of the CEMARS® certification having measured and committed to manage and reduce its greenhouse gas emissions in respect of the operational activities of its organisations including the YHA National Office and all YHA managed hostels within New Zealand.



Introduction¹ – YHA New Zealand is a not-for-profit incorporated society. We are a membership-based charitable organisation with a network of 53 hostels throughout New Zealand from the far north to right down south to a proposed eco-friendly hostel and learning centre on Stewart Island. 25 of these hostels are owned and operated by YHA New Zealand; the remainder of the YHA network consists of Associate partnerships with independently owned and operated hostels that operate under the YHA brand and follow YHA's standards of quality and consistency, including its sustainability initiatives.

Over its history, YHA New Zealand has developed its hostel network in support of its charitable purpose. Our network not only supports and facilitates travel; it also promotes knowledge and understanding through the social interaction stimulated by our hostels' communal living and recreational areas. YHA also actively educate customers and members through our pervasive expression and commitment to environmental sustainability, for which the Association has received many awards and accolades over the years. YHA is committed to being an exemplar for social and environmental sustainability.

Boundary – The schematic below represents the organisational structure used for describing YHA's greenhouse gas (GHG) emissions inventory, and the 25 YHA-managed hostels and national office which are included in the CEMARS certification.

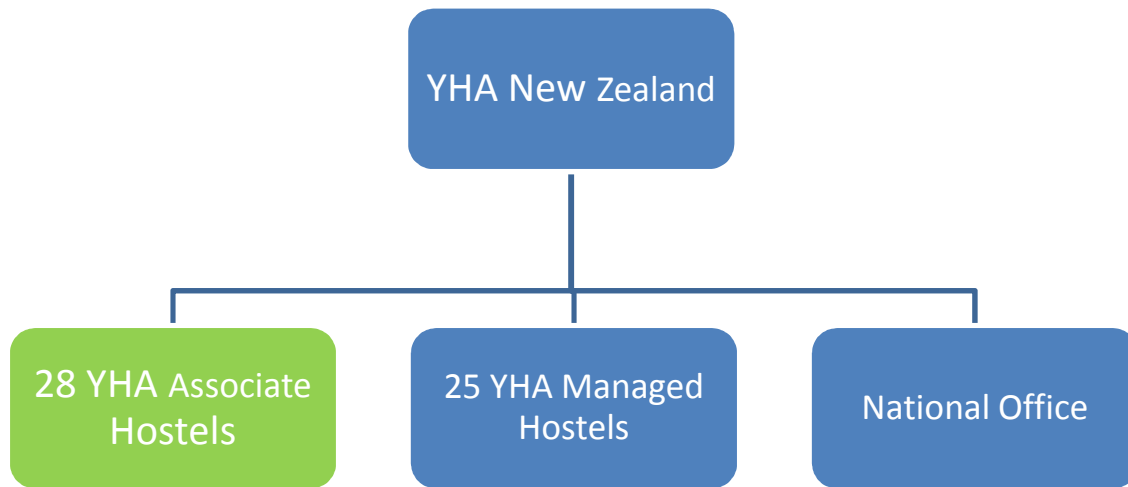
The 28 Associate Hostels are not included in the inventory and certification process. These are small independent businesses trading under the YHA brand and YHA New Zealand does not have operational control of these individually-owned businesses.

¹ **Disclaimer:** This Disclosure Statement is a summary of the verified information considered for certification and the certification decision. It should not be taken to represent the full submission for certification. While every effort has been made to ensure that the information in this Disclosure Statement is accurate and complete, Landcare Research does not, to the maximum extent permitted by law, give any warranty or guarantee relating to the accuracy or reliability of the information.

Summary of CEMARS certification:



Youth Hostels Association of New Zealand Inc.



Consolidation approach – operational control

Base year – 01/07/2008 to 30/06/2009

Measurement period – 01/07/2008 – 30/06/2009

GHG emissions source inclusions – The diagram below shows the operational GHG emissions for YHA by emissions source. YHA total emissions for this period were 1139.99 tonnes carbon dioxide equivalents (CO₂e) comprising:

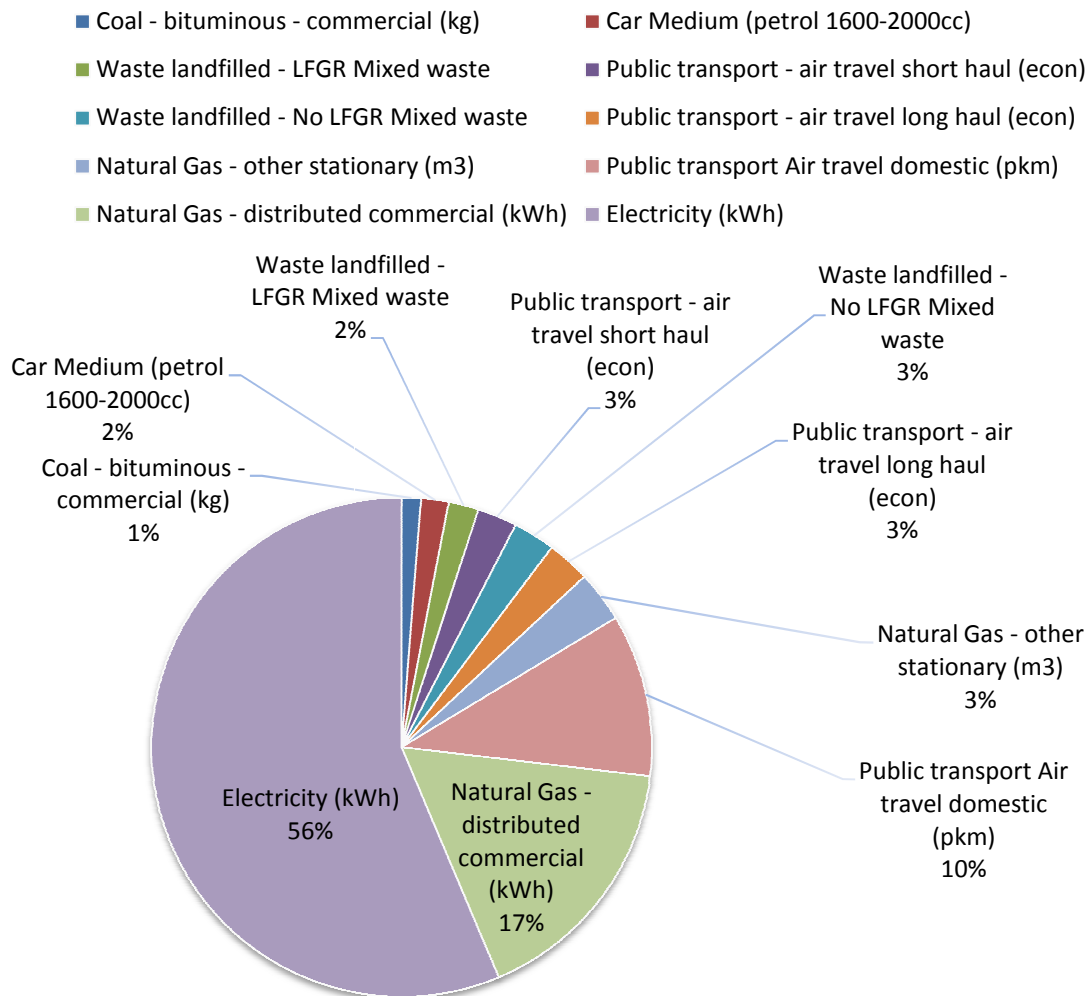
- 289.98 tonnes CO₂e Scope 1
- 624.18 tonnes CO₂e Scope 2
- 225.83 tonnes CO₂e Scope 3

Summary of CEMARS certification:



Youth Hostels Association of New Zealand Inc.

Top 10 Emissions by Source



Summary of CEMARS certification:



Youth Hostels Association of New Zealand Inc.

GHG emissions source exclusions – The 28 Associate hostels are excluded from the inventory. These are small independent businesses trading under the YHA brand. No data has been incorporated into this report from these hostels as YHA New Zealand does not have operational control of these individually-owned businesses.

The minor exclusions are small courier packages and freight kilometres for goods delivery parcels, due to the complexity of keeping track of the kilometres travelled and weight of goods sent.

GHG emissions reduction commitments – YHA has developed a GHG emissions reduction plan. Some projects in this plan include:

Objective	Completion date
1. Reduce emissions from electricity and gas	30/06/10
2. Reduce emissions from air travel – domestic and international	30/06/10
3. Reduce emissions from rental cars	30/06/10
4. Reducing waste to landfill	30/06/10

Verified by – Deloitte

Threshold of materiality – excluded emissions do not exceed 5% of the total footprint for organisation and product boundary stated.

Level of assurance – reasonable assurance

Certification status – CEMARS certified “organisation” covering YHA National Office and all YHA-managed hostels within New Zealand.

Certificate number – 2010068J

Valid until – 31 December 2010

Youth Hostel Association of New Zealand Inc, Level 1, 166 Moorehouse Ave, Christchurch 8011, New Zealand.
Tel: +64 (0) 3 379 9970. Email: Johnathan.Tunnell@yha.co.nz Web: www.yha.co.nz