

Yealands Estate Wines Limited

“Yealands Estate Wines Limited meets the requirements of the carboNZero^{Cert™} certification having measured its greenhouse gas emissions in compliance with ISO 14064-1 including additional life cycle emissions associated with selected products, committed to managing and reducing its emissions and neutralised its remaining unavoidable emissions in respect of its organisation and selected products.



Introduction¹ – Yealands Estate Wines Limited is based in the Awatere Valley, to the south east of Marlborough’s Wairau Plains. It is owned by Peter Yealands and his family. Its core activities as a company are the winemaking and distribution activities associated with its wine brands.

Yealands Estate Wines Limited operates out of the Yealands Winery. This winery was built from scratch to target a 6 star standard in the Green Star NZ Industrial rating system. It is designed to handle some 11,000 tonnes of premium wine at full production, the majority of which will come off the vines of its sister company Yealands Estate Limited.

The winery was built to excel in large-scale, high quality wine production without compromising the environment. Yealands Estate Wines Limited understand the environmental issue of anthropogenic climate change and, as part of a much broader commitment to sustainability, are carboNZero certified for its operational emissions, selected wine products and total grape supply.

Boundary – the diagrams below shows the organisational and product structures used for describing Yealands Estate Wines Limited greenhouse gas (GHG) emissions inventory, and what business units were included in the carboNZero certification. The percentage figures indicate the level of ownership by Yealands Estate Wines Ltd.

¹ **Disclaimer:** This Disclosure Statement is a summary of the verified information considered for certification and the certification decision. It should not be taken to represent the full submission for certification. While every effort has been made to ensure that the information in this Disclosure Statement is accurate and complete, Landcare Research does not, to the maximum extent permitted by law, give any warranty or guarantee relating to the accuracy or reliability of the information.

Yealands Estate Wines Limited

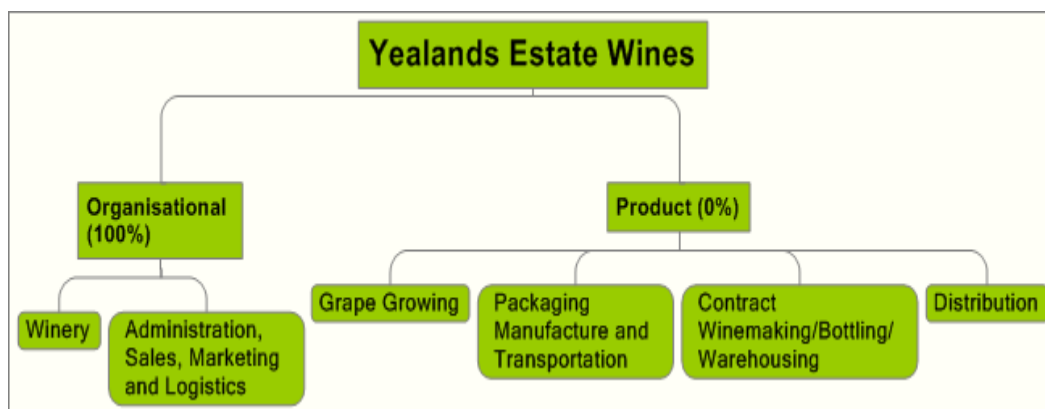


Figure 1: Organisational structure.

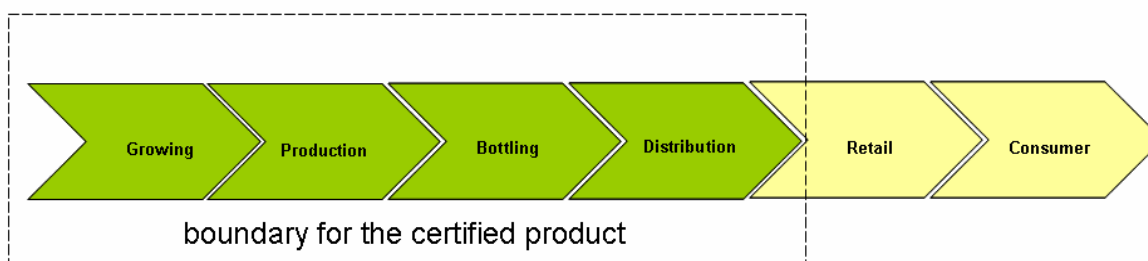


Figure 2: Life cycle emissions sources for selected wine products

Consolidation approach – Operational control

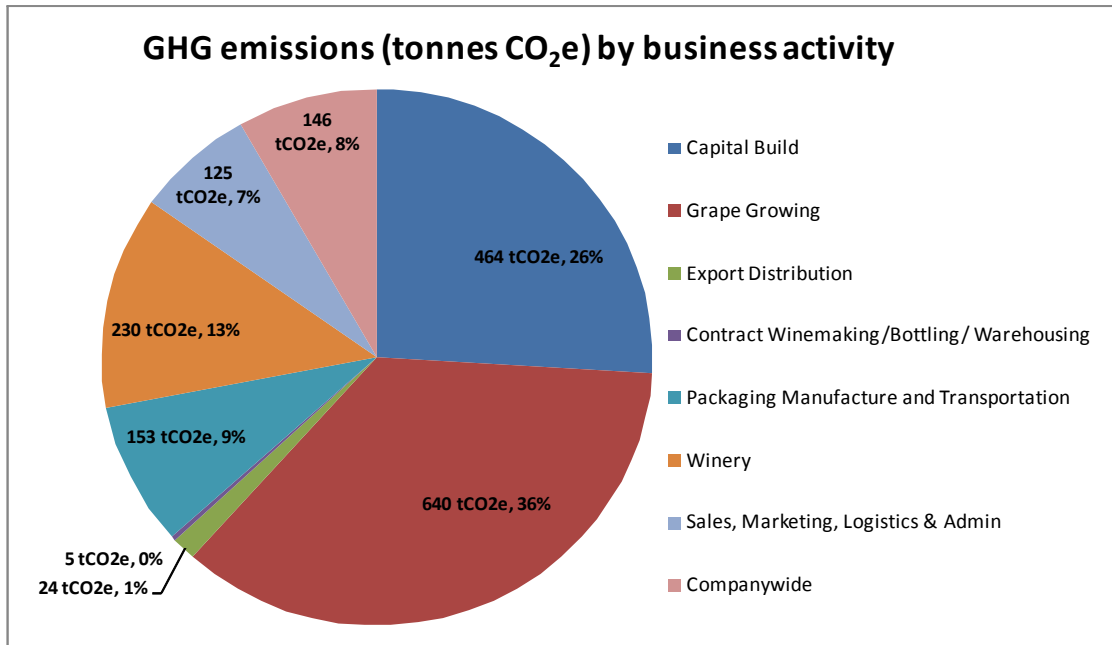
Base year – 01/07/2008 to 30/06/2009 (recalculated from previous year)

Measurement period – 1/07/2008 to 30/06/2009

GHG emissions source inclusions – Figure 3 shows the GHG emissions for Yealands Estate Wines Limited by emissions source for the organisation and product. In summary, organisational emissions sources included electricity used in the Marlborough office and facilities, fuel use by the company vehicle fleet, business travel, waste disposal and emissions associated with the completion of construction of the winery. Product emissions sources included electricity, fuel and agrochemical use in vineyards including contracted grape growing; electricity and fuel use and waste disposal in the winery including contracted wine making; embodied emissions associated with the packaging and freight to the destination on the shipping note.

Yealands Estate Wines Limited's total emissions for this period were 1792.04 tonnes carbon dioxide equivalents (CO₂e) comprising 83.43 tonnes CO₂e Scope 1, 135.67 tonnes CO₂e Scope 2 and 1572.93 tonnes CO₂e Scope 3 emissions. Of these Scope 3 emissions 464.56 tonnes CO₂e were one-time emissions from the capital build of the Yealands Estate Winery.

Yealands Estate Wines Limited



GHG emissions source exclusions – The following emissions sources were excluded from the inventory as they were estimated to be *de minimis* i.e. less than 1% and did not accumulate to more than 5% of the total inventory:

- hotel accommodation and some ground transport
- embodied emissions in minor capital items and equipment–embodied emissions in consumables
- contract bottling and storage emissions
- capital build from suppliers onsite emissions including the transportation of people, plant and equipment to the winery site
- embodied emissions in wine additives
- electricity from the Auckland sales office
- wastewater treatment

GHG emissions reduction commitments – Yealands Estate Wines Limited has developed a GHG emissions reduction plan. Some projects in this plan include:

- Installation of a biomass boiler
- Move from Grand Burgundy to Premium Burgundy bottles for Yealands Wines
- Trial of alternate packaging

Summary of carboNZero certification:

Yealands Estate Wines Limited

Offset – 1328 tonnes CO₂e. VERs² from PRE³ Tararua II windpower project. Serial numbers 338257-339584 have been cancelled on the carboNZero registry. Emissions from one-time emissions from the capital build of the winery were excluded from the offset required for certification.

Verified by – Deloitte, New Zealand

Threshold of materiality – excluded emissions do not exceed 5% of the total footprint for organisation and product boundary stated.

Level of assurance – reasonable assurance for organisation, limited assurance for products.

Certification status – carboNZero certified “organisation” and “product” covering Yealands Estate Wines Limited and products⁴ branded Yealands, Yealands Estate, Yealands Way, New Yealands and Yealands Showcase, Full Circle, Pete’s Shed.

Certificate number – 2009072J

Valid until – 30th September 2010.

Yealands Estates Wines Limited, 534 Seaview Road, Seddon, Marlborough, New Zealand
Tel: +64 (0)3 575 7618, Email: info@yealands.co.nz, Web: www.yealands.co.nz

² VERs are created by eligible projects for emissions reductions achieved up to the end of 2007.

³ PRE - Projects to Reduce Emissions is a New Zealand government scheme for projects that are eligible under the Joint Implementation initiative of the Kyoto Protocol – see www.mfe.govt.nz

⁴ 2009 Vintage for: Chardonnay, Gewürztraminer, Pinot Gris, Pinot Noir, Riesling, Sauvignon Blanc, Tempranillo.