

Summary of carboNZero certification:

Emirates Wolgan Valley Resort and Spa

Emirates Wolgan Valley Resort and Spa meets the requirements of carboNZero certification in respect of the operational activities of its organisation having:

- *measured its greenhouse gas emissions in compliance with ISO 14064-1:2006*
- *committed to managing and reducing its emissions*
- *neutralised the remaining unavoidable emissions through the cancellation (or equivalent) of an appropriate number of verified carbon credits.*



Introduction¹ – Emirates Wolgan Valley Resort and Spa is a former Australian grazing property that has been developed into a luxury-based conservation tourism project. It is located approximately 190km north-west of Sydney, adjacent to the Greater Blue Mountains World Heritage Area, and the Wollemi and Gardens of Stone National Parks. The resort complex consists of 40 free-standing suites, plus additional buildings for activities such as dining, recreation, and spa facilities. Additional staff accommodation (for up to 90 staff) and support buildings are also located on the property, including the original 1832 homestead, which has been restored into a heritage museum. Where possible, new buildings have been constructed using sustainable, locally-available materials and adherence to green building design standards.

The area of the property is approximately 1600ha, of which the building footprints occupy less than 2%. Guests are able to participate in a range of activities on the property including nature walks, mountain biking, heritage tours, horse-riding and wildlife spotting. The resort also has a large swimming pool, a fully equipped gymnasium and tennis courts.

Conservation is key to the project, with numerous ongoing programmes to preserve remnant ecosystems and rehabilitate degraded ecosystems on site. These include restoration of native vegetation in key wildlife corridors and riparian zones, as well as habitat protection and rehabilitation. An active feral animal control programme seeks to reduce the numbers of introduced predators that hunt and kill indigenous fauna. A feral proof fence is being constructed around parts of the property to exclude introduced predators such as feral cats and foxes. Numerous ongoing research programmes are underway on site to examine the feasibility of various habitat restoration and indigenous fauna re-introduction programmes.

¹ **Disclaimer:** This Disclosure Statement is a summary of the verified information considered for certification and the certification decision. It should not be taken to represent the full submission for certification. While every effort has been made to ensure that the information in this Disclosure Statement is accurate and complete, Landcare Research does not, to the maximum extent permitted by law, give any warranty or guarantee relating to the accuracy or reliability of the information.

Emirates Wolgan Valley Resort and Spa

The carbon-neutral certification of Emirates Wolgan Valley Resort and Spa is a small part of the project's overall commitment to conservation and ecologically sustainable development.

Boundary – Figure 1 below show the organisational structure used for describing Wolgan Valley Resort and Spa's greenhouse gas (GHG) emissions inventory, and what business units were included in the carboNZero certification. Yellow business units were excluded from the certification.

Figure 2 over page shows the emissions sources for the organisation in the context of the service (i.e. guest experience). Emissions sources in green have been included, and sources in yellow were excluded.

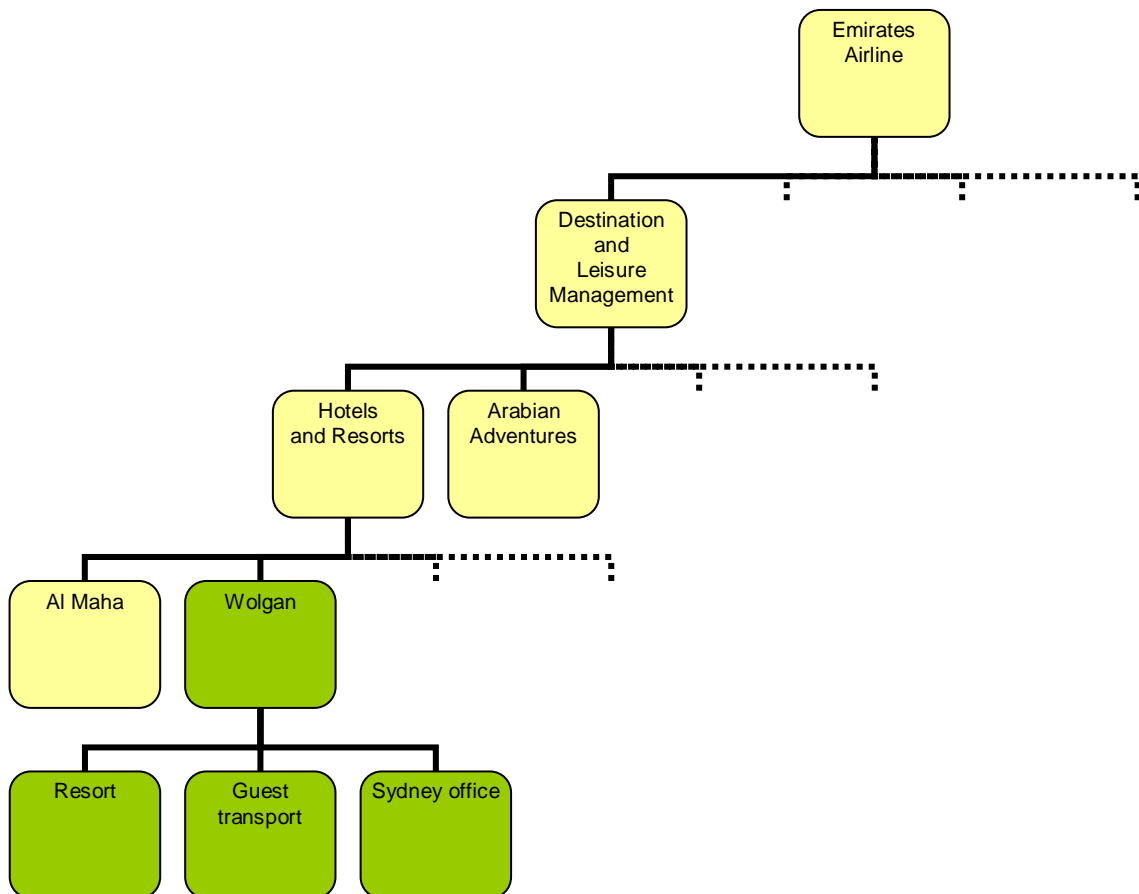


Figure 1: Organisational chart showing management status of the resort.

Emirates Wolgan Valley Resort and Spa

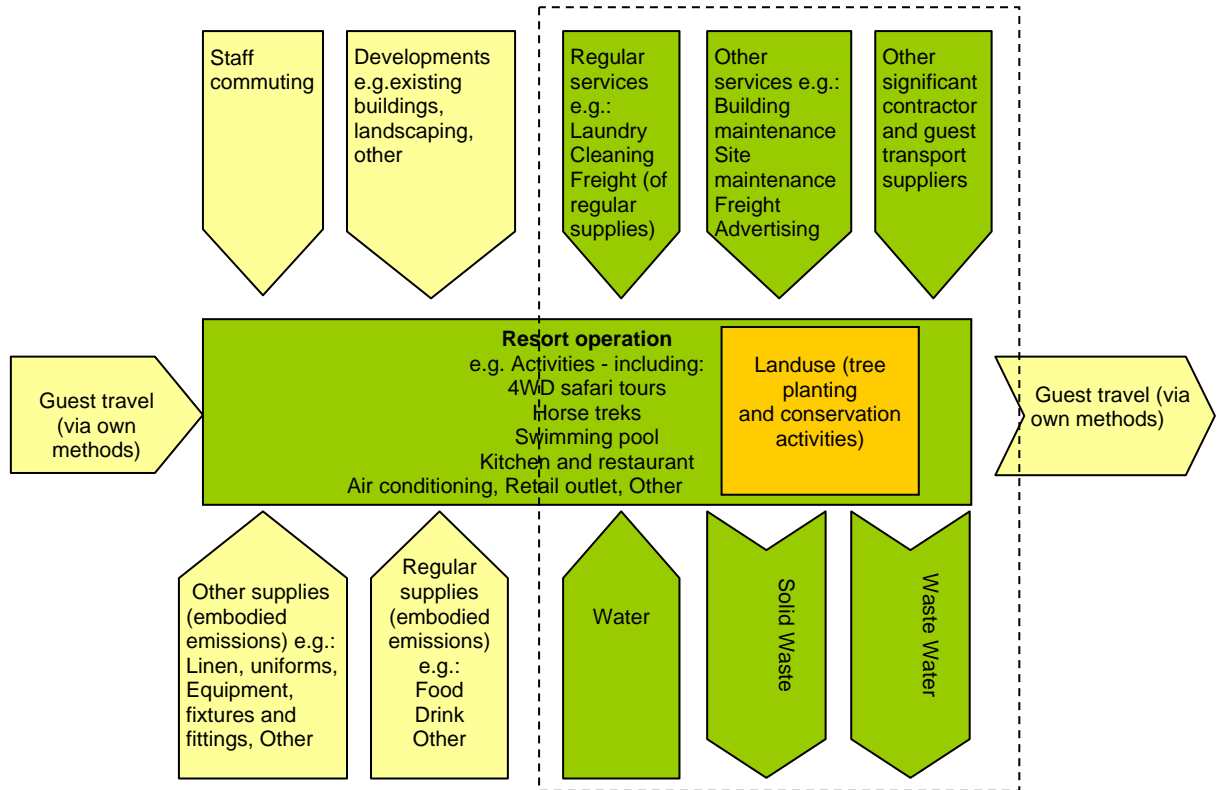


Figure 2: Supply chain diagram showing emissions sources for the organisation in the context of the service (i.e. guest experience).

Consolidation approach – Operational control

Base year – 01/01/2010 to 31/12/2010

Measurement period – 01/01/2010 to 31/12/2010

The calculations in this report are based on forecasted estimates of emissions source activity data. A second report will be generated after the end of December 2010 in order to confirm and verify the actual emissions for this period. At that time, measurement will be brought into line with normal emissions measurement and calculation methods.

GHG emissions source inclusions – Figure 3 over page shows the operational GHG emissions for Wolgan Valley Resort and Spa by emissions source. Wolgan Valley Resort and Spa’s total emissions for this period were 3,848 tonnes carbon dioxide equivalents (CO₂e) comprising 1,241 tonnes CO₂e Scope 1, 1,667 tonnes CO₂e Scope 2 and 940 tonnes CO₂e Scope 3 emissions. Although guests arrange their own travel, the emissions associated with guest travel by helicopter and limousine is being monitored. These emissions are reported at 142.65 tonnes CO₂e (3.7% of the total inventory before removals) but they are not offset as the activity is not owned or controlled by Emirates.

Summary of carboNZero certification:

Emirates Wolgan Valley Resort and Spa

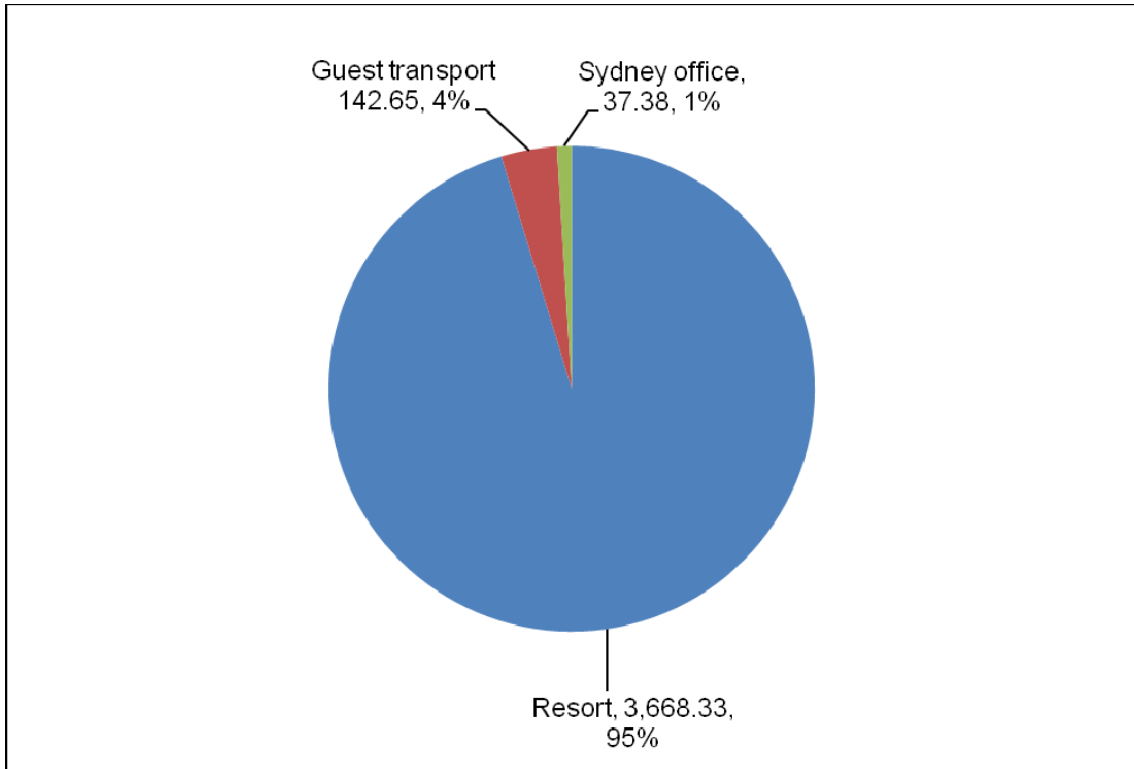


Figure 3: Pie chart showing GHG emissions by business unit.

Uncertainty for scope 1 emissions – an uncertainty measurement will be conducted at the end of the base year period

GHG emissions source exclusions – The following emissions sources were excluded from the inventory for this time period:

- Paper use
- Some refrigerants
- Swimming pools – CO₂ cylinders
- Embodied emissions associated with supplies and materials
- Embodied emissions associated with fuels used on site
- Outsourced services

GHG emissions reduction commitments – Wolgan Valley Resort and Spa has developed a GHG emissions reduction plan. Some projects in this plan include:

- Investigating composting options to reduce food waste to landfill
- Reducing packaging waste by working with major suppliers to implement sustainable procurement criteria
- Investigate the feasibility of decreasing solar gain in staff buildings to reduce the cooling requirements

Summary of carboNZero certification:

Emirates Wolgan Valley Resort and Spa

Offset – 556 Gold Standard certified VERs generated by the Meridian Energy White Hill windfarm project, serial numbers GS1-1-NZ-340-12-2007-11-15377 to 15932 have been retired on the Gold Standard Registry. The offset requirement has been reduced through the purchase of certified 35% GreenPower from Origin Energy and annual removals enhancements associated with the removal of livestock from agricultural land and its restoration to native forest.

Verified by – carboNZero Programme Strategic Business Unit

Threshold of materiality – Excluded emissions do not exceed 5% of the total footprint for organisation stated.

Data quality – Poor (as this is a projected inventory based on estimation)

Level of assurance – Limited assurance

Certification status – carboNZero certified “organisation”.

Certificate number – 2009080J

Valid until – 31 March 2011

Emirates Wolgan Valley Resort & Spa, 2600 Wolgan Road, Wolgan Valley, Lithgow, NSW 2790 Australia. Tel: +61 2 9290 9733, Email: reservations@wolganvalley.com.au, Web: www.wolgan-valley.com.au