

# Summary of carboNZero certification: Wairau River Wines Limited

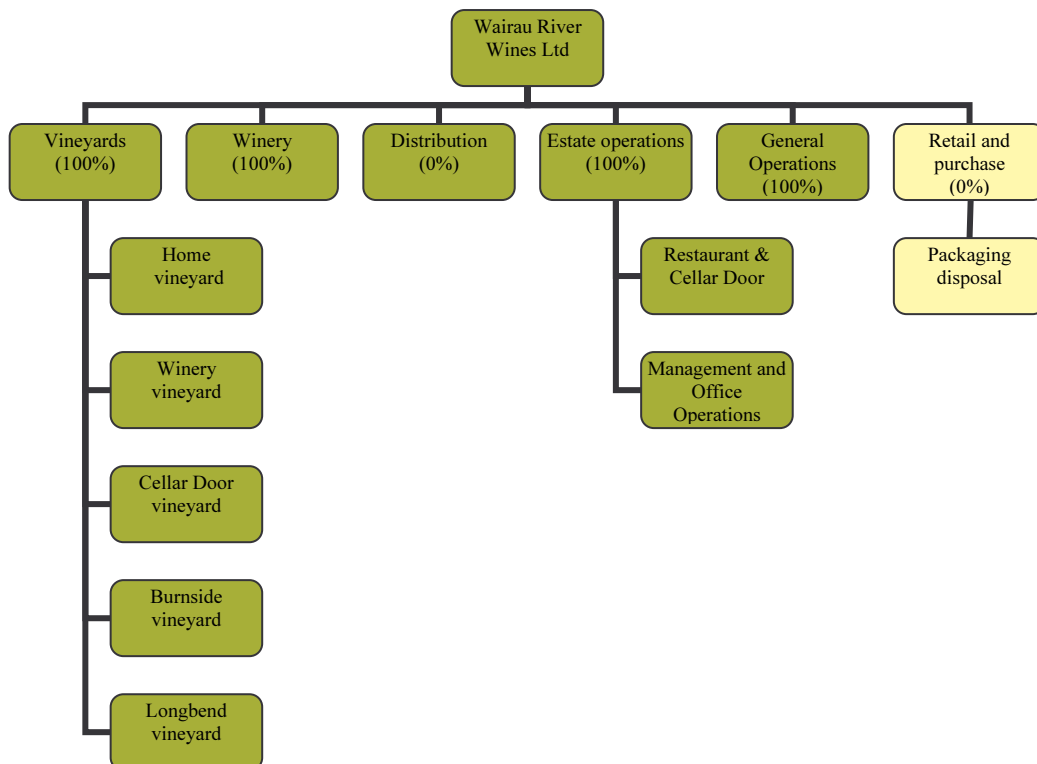


WAIRAU RIVER WINES  
FAMILY ESTATE SINCE 1978

**Introduction** – Wairau River Wines is a privately owned family wine estate established in 1978 by Phil & Chris Rose. The estate is located in the Rapaura district of the Wairau Valley in Marlborough, New Zealand. Wairau River Wines owns five estate vineyards, a winery that was built in 2002, and a restaurant/cellar door. Their flagship wine is Sauvignon Blanc, while the rest of the portfolio comprises Pinot Gris, Riesling, Gewürztraminer, Chardonnay and Pinot Noir. They employ 18 full-time staff.

Phil Rose, Director states that "Respect for the environment is paramount in all decisions concerning the winery and vineyards. It is important to our family company to have the least impact possible on our surroundings, ensuring that the wonderful environment we live in is here for future generations to enjoy, allowing us to continue creating world class wines."

**Boundary** – the diagram below shows the organisational structure used for describing Wairau River Wines' greenhouse gas (GHG) emissions inventory, and what business units were included in the carboNZero certification. Yellow business units were excluded from GHG emissions inventory and certification. The percentage figures indicate the level of ownership by Wairau River Wines.

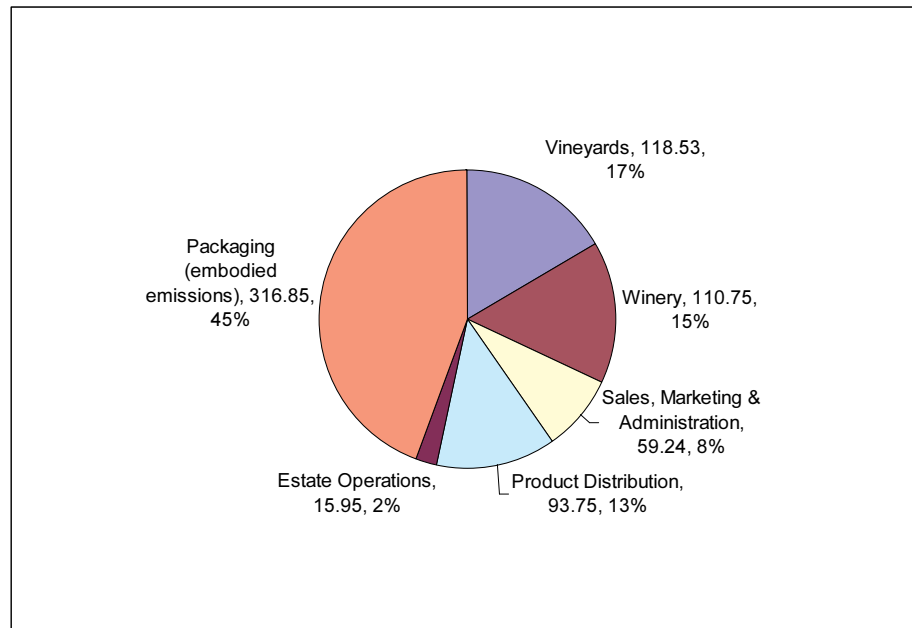


# Summary of carboNZero certification: Wairau River Wines Limited



## Consolidation approach – financial control

**GHG emissions profile** – the diagram below shows the operational GHG emissions for Wairau River Wines by emissions source. Wairau River Wines' total emissions for this period were 716 tonnes carbon dioxide equivalents (CO<sub>2</sub>e). All of these emissions were operational emissions.



**GHG emissions reduction commitments** – Wairau River Wines has developed a GHG emissions reduction plan. Some projects in this plan include:

- Reduce winery electricity emissions intensity (various actions)
- Eliminate the use of helicopters for frost protection by using wind machines
- Investigate feasibility of solar hot water
- Reduce weight of bottles for future bottling
- Use smaller and lighter cartons for packaging.

**Offset** – 716 tonnes CO<sub>2</sub>e from PRE<sup>1</sup> windpower projects.

**Verified by** – Verification New Zealand.

**Base year** – 01/07/2006 to 30/6/2007.

**Certification status** – carboNZero certified in terms of its “organisation” and “wine products”.

**Valid until** – 30 September 2008.

<sup>1</sup> PRE - Projects to Reduce Emissions is a New Zealand government scheme that awards emission units to eligible initiatives that reduce greenhouse gas emissions – see [www.mfe.govt.nz](http://www.mfe.govt.nz)