

## Summary of carboNZero certification:



### Faculty of Architecture and Design (Victoria University of Wellington)



Faculty of Architecture & Design

**Introduction** – Victoria University's Faculty of Architecture and Design (FoAD) is a highly regarded architecture and design tertiary institution with award winning students and academics, and leading educational and research programmes.

The Faculty is made up of the School of Architecture (architecture, building science, landscape architecture, interior architecture and building management programmes) and the School of Design (digital media and industrial design programmes).

The Faculty is located between Vivian and Wigan Streets in central Wellington. The Te Aro campus comprises two large buildings housing lecture theatres, design studios, computer suites, library, workshop, offices and exhibition space in the main atrium. There are no significant gardens or grounds.

The campus is in use all year round and most intensively during the traditional academic period of late February to October. Approximately 1200 students were enrolled in FoAD courses during 2007.

Other University of Victoria campuses are located at Kelburn, (Kelburn Campus), Karori (Karori Campus) and the CBD (Pipitea Campus). Those campuses are not included in the GHG emissions inventory.

**Boundary** – the diagram below shows the organisational structure used for describing the Faculty of Architecture and Design's greenhouse gas (GHG) emissions inventory. In accordance with the carboNZero programme, all facilities in yellow are outside the GHG emissions boundary and therefore are outside the scope of certification.

#### **STUDIO**

STUDIO performs a variety of functions for the students of FoAD (e.g. student representation on Faculty/School boards/committees, maintaining academic and social links with the Massey Design and Art Schools, social events). STUDIO receives its funding from the VUW Wellington Student Association, FoAD, professional bodies and local business sponsors. Although STUDIO is outside the Faculty's emissions boundary a number of STUDIO's activities (e.g. meeting venues within the faculty) are nevertheless captured in the inventory.

#### **Commuting**

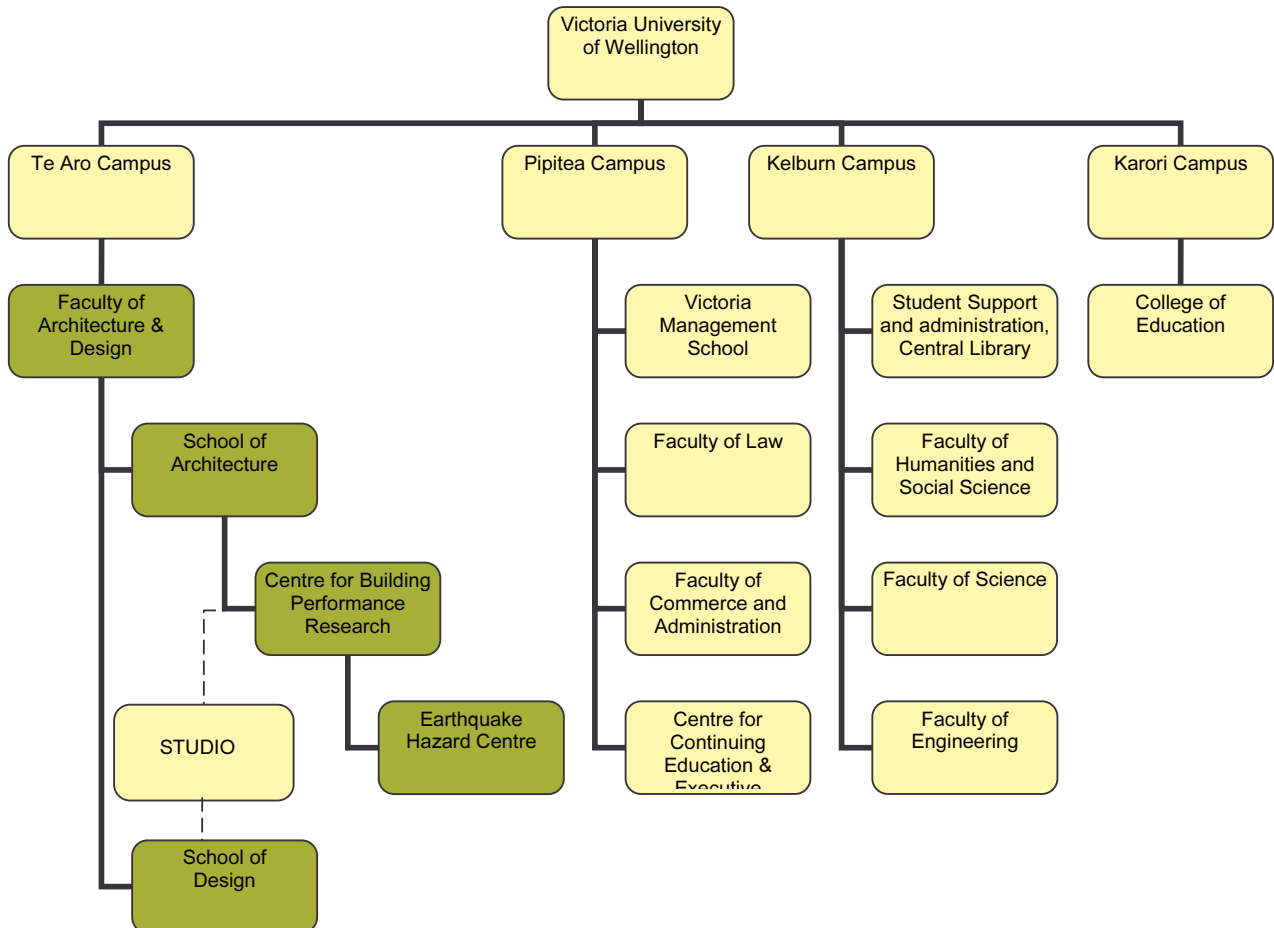
International practice in respect of GHG emissions inventory reporting in the education sector remains under development, and appears to be moving towards measurement of emissions associated with faculty staff and student commuting<sup>1</sup>.

<sup>1</sup> See M Buttazzoni and K Zyla, 2003. *Lessons Learned from Yale University Inventory: GHG Emissions from Transportation*. [www.epa.gov/ttn/chief/conference/ei14/session3/buttazzoni.pdf](http://www.epa.gov/ttn/chief/conference/ei14/session3/buttazzoni.pdf)

## Summary of carboNZero certification:



### Faculty of Architecture and Design (Victoria University of Wellington)



The University commissioned and implemented a staff and student travel survey<sup>2</sup> in March 2007. The survey results are provided on a campus basis. A low survey response rate and statistical uncertainties has not allowed for an accurate assessment of GHG emissions associated with the FoAD's staff or student commuting. Those emissions have therefore been excluded from the 2007 GHG inventory. The survey did provide valuable data for the development of a university travel plan (VIC Commute<sup>3</sup>), and incorporation into FoAD's GHG Emissions Reduction Plan.

The carboNZero programme has recognised the efforts and expense in attempting to measure commuter GHG emissions, and notes improvements which could be made to the survey to enhance future response rates and to improve data capture in relation to GHG emissions measurement.

<sup>2</sup> Opus International Consultants Ltd, May 2007. *Victoria University Travel Plan. Staff and Student Travel Survey Results. Final.*

<sup>3</sup> Opus International Consultants Ltd, June 2007. *Victoria University Travel Plan. Scope Statement. Final.*

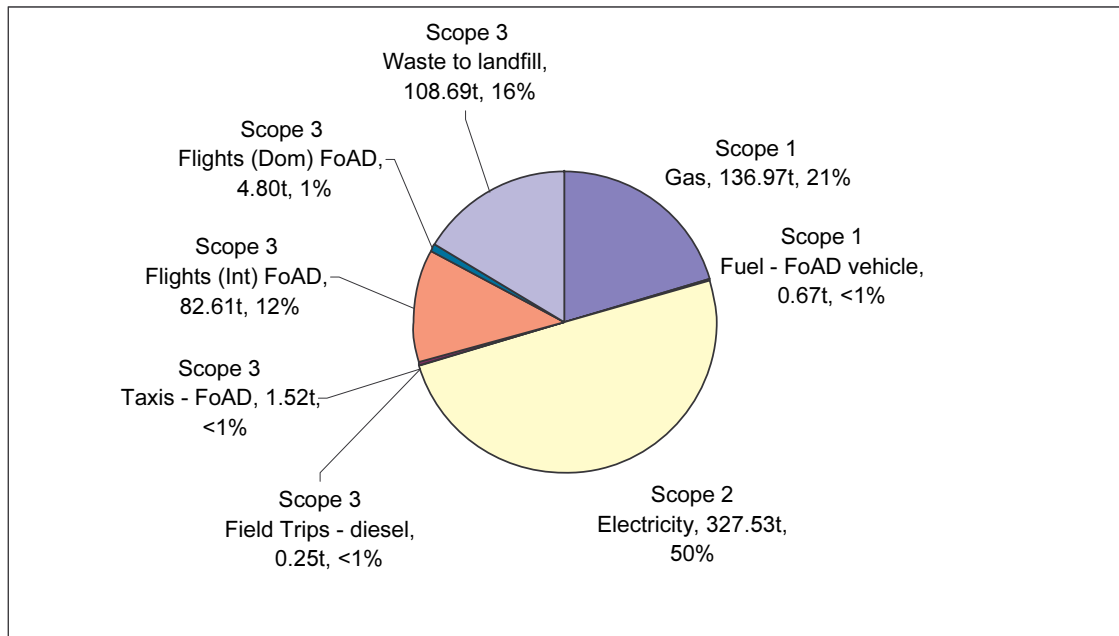
## Summary of carboNZero certification:



### Faculty of Architecture and Design (Victoria University of Wellington)

**Consolidation approach** – Operational control.

**GHG emissions profile** – the diagram below shows the operational GHG emissions for FoAD by emissions source. The combined total emissions for this period were 664 tonnes carbon dioxide equivalents (CO<sub>2</sub>e).



**GHG emissions reduction commitments** – The Faculty has developed a GHG emissions reduction plan. Some projects in this plan include:

- Investigation, planning and implementation of increased efficiency and use of gas boilers
- Reduction in air travel through video and teleconferencing technologies
- Development and implementation of a waste to landfill reduction plan
- Implementation of the staff and student commuting travel plan
- Active leadership in FoAD and Wellington City Council emission reduction opportunities

**Offset** – FoAD purchases carbon neutral electricity from Meridian Energy. The remaining 336 tonnes CO<sub>2</sub>e has been offset with Gold Standard verified PRE<sup>4</sup> windfarm credits.

Staff and student commuting is the only significant source of emissions which has been excluded from certification. A limited number of minor sources have been excluded

<sup>4</sup> PRE - Projects to Reduce Emissions is a New Zealand government scheme that awards emission units to eligible initiatives that reduce greenhouse gas emissions – see [www.mfe.govt.nz](http://www.mfe.govt.nz)

## Summary of carboNZero certification:



Faculty of Architecture and Design  
(Victoria University of Wellington)

(minor quantities of some workshop gases, business accommodation). No significant sources of emissions have been excluded from offsetting.

**Verified by** – Pricewaterhouse Coopers

**Base Year** – 01/01/2007 to 31/12/2007

**Certification status** – carboNZero certified “organisation” covering building electricity consumption, domestic road and air transport, international air travel, waste to landfill.

**Valid until** – 31 March 2009.