



## Introduction

### Renewable energy generation

TrustPower produces energy exclusively from renewable resources. With 34 generation stations throughout New Zealand, TrustPower is one of New Zealand's leading entirely renewable energy producers.

All TrustPower's generation stations are strategically located around New Zealand which ensures that power is generated close to where it is consumed. This supports energy efficiency as it minimises transmission costs and losses.

TrustPower is committed to taking action on climate change via the on-going development of renewable energy generation. TrustPower has recently completed an expansion of the Taranua Windfarm that now supplies energy to around 75,000 homes. TrustPower also has other projects in the pipeline.

TrustPower elected to seek carboNZero certification because it provided the methodology and framework they felt was required to measure, understand and mitigate their emissions.

### From small beginnings to one of New Zealand's largest electricity retailers

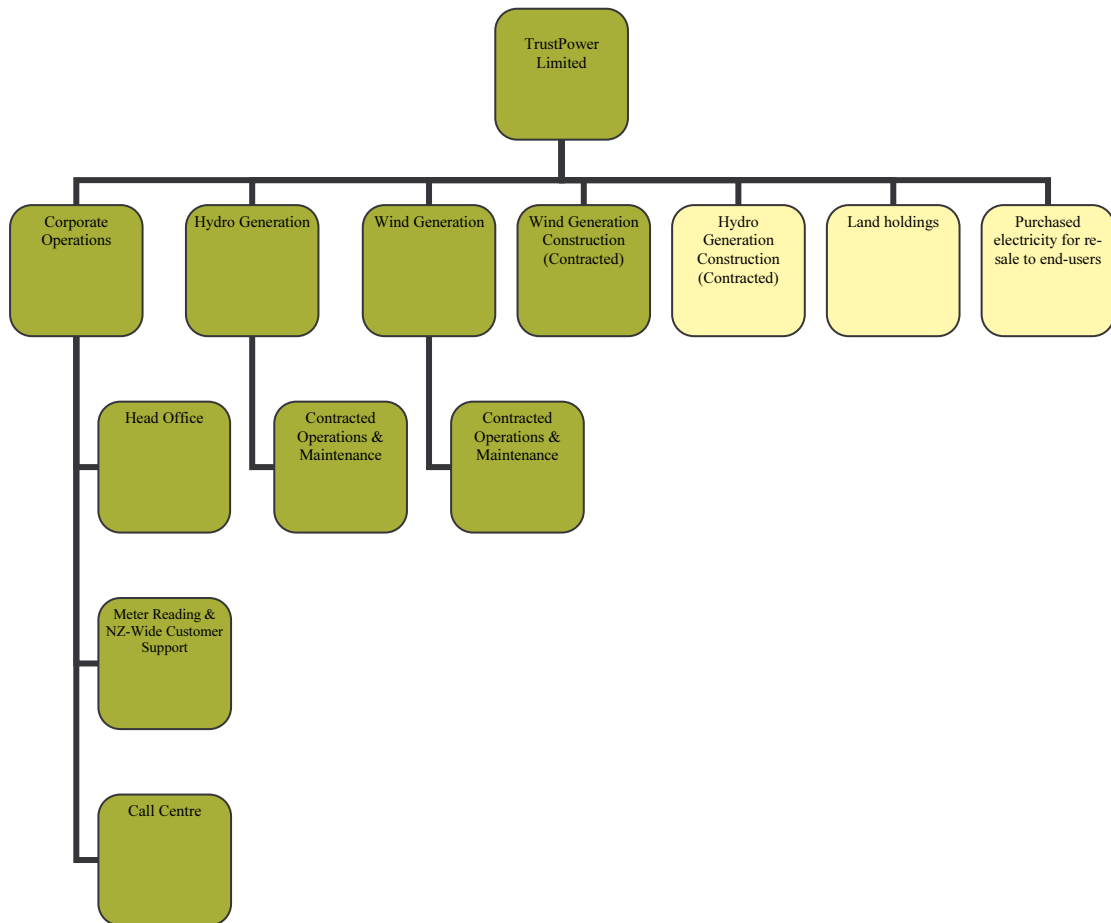
From its home base in Tauranga, TrustPower supplies power to almost quarter of a million homes and businesses throughout the North and South Islands of New Zealand.

TrustPower traces its beginnings back to the Tauranga Electric Power Board which opened for business in 1925. Today, with 455 staff across New Zealand, TrustPower has grown to be one of New Zealand's largest and most customer focused power companies.

**Boundary** – the diagram below shows the organisational structure used for describing TrustPower's greenhouse gas (GHG) emissions inventory, and what business units were included in the carboNZero certification. Yellow business units were excluded from the certification.

**Consolidation approach** – financial control

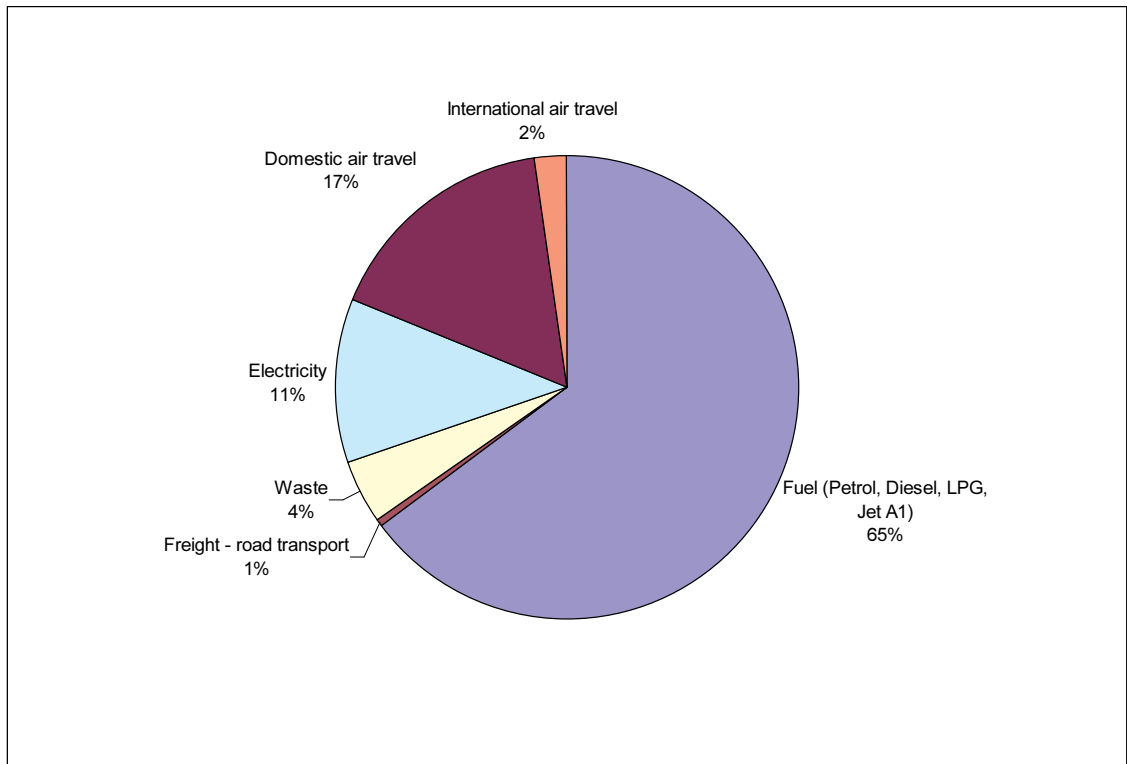
# Summary of carboNZero certification: TrustPower Limited



**GHG emissions profile** – TrustPower’s total emissions for this period were 35,125 tonnes carbon dioxide equivalents (CO<sub>2</sub>e) comprising 2015 tonnes CO<sub>2</sub>e operational emissions and 33,110 tonnes CO<sub>2</sub>e non-operational indirect one-time (Scope 3) emissions. The diagram below shows the operational GHG emissions for TrustPower by emissions source.

**GHG emissions reduction commitments** – TrustPower has developed a GHG emissions reduction plan. Some projects in this plan include:

- Review procurement procedures to ensure appropriate consideration is given to fuel efficiency in vehicle selection to achieve reductions in fuel use by the vehicle fleet. Options to influence driver behaviour will also be investigated.
- Complete a review of domestic air travel and seek to develop a culture where only essential air travel is undertaken.
- Undertake an energy audit on the TrustPower Te Maunga (Head Office) site and implement low cost savings identified.
- Extend recycling program across the company ensuring all areas have paper recycling bins, in order to achieve reductions in solid waste to landfill. Options to influence employee behaviour will also be investigated.



**Offset** – 2,015 tonnes CO<sub>2</sub>e. VERs<sup>1</sup> from TrustPower’s Tararua State 1 Wind Farm voluntary emission reduction units (VER’s) created by the PRE<sup>2</sup> scheme and retired on Regi. One-time emissions from the construction of Stage III of the Tararua Wind Farm were excluded from the offset required for certification as these emissions will be accounted for through the PRE scheme.

**Verified by** – PriceWaterhouseCoopers.

**Base year** – 1/4/2006 to 31/3/2007.

**Certification status** – carboNZero certified “organisation” covering the generation and retailing of TrustPower-generated electricity.

**Valid until** – 30 September 2008.

<sup>1</sup> VERs are created by eligible projects for emissions reductions achieved up to the end of 2007.

<sup>2</sup> PRE - Projects to Reduce Emissions is a New Zealand government scheme for projects that are eligible under the Joint Implementation initiative of the Kyoto Protocol – see [www.mfe.govt.nz](http://www.mfe.govt.nz)