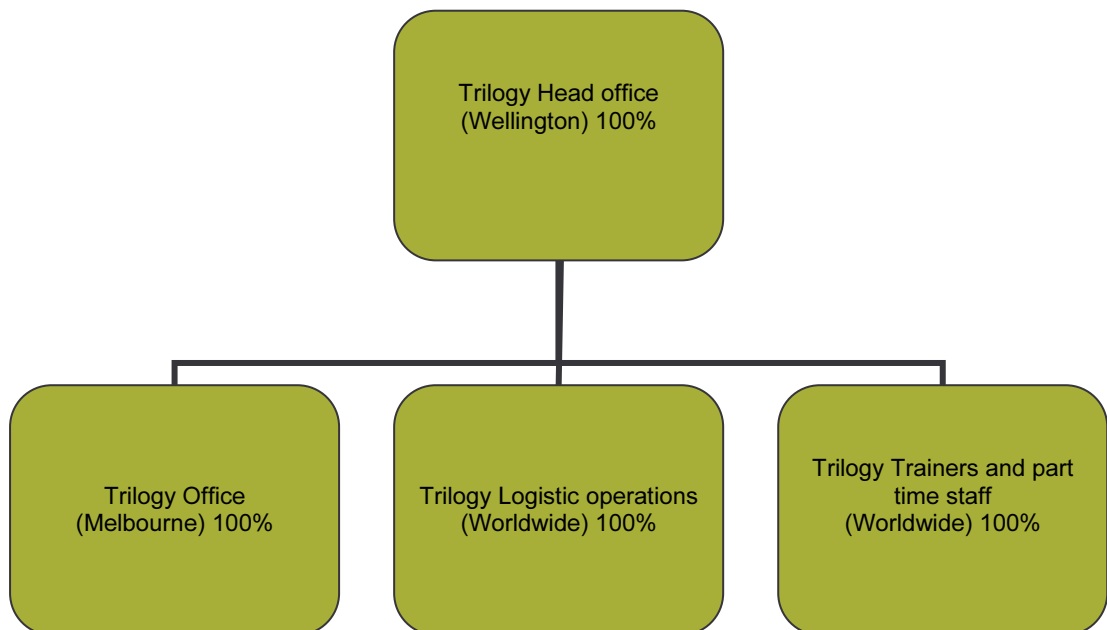


Summary of carboNZero certification: Trilogy

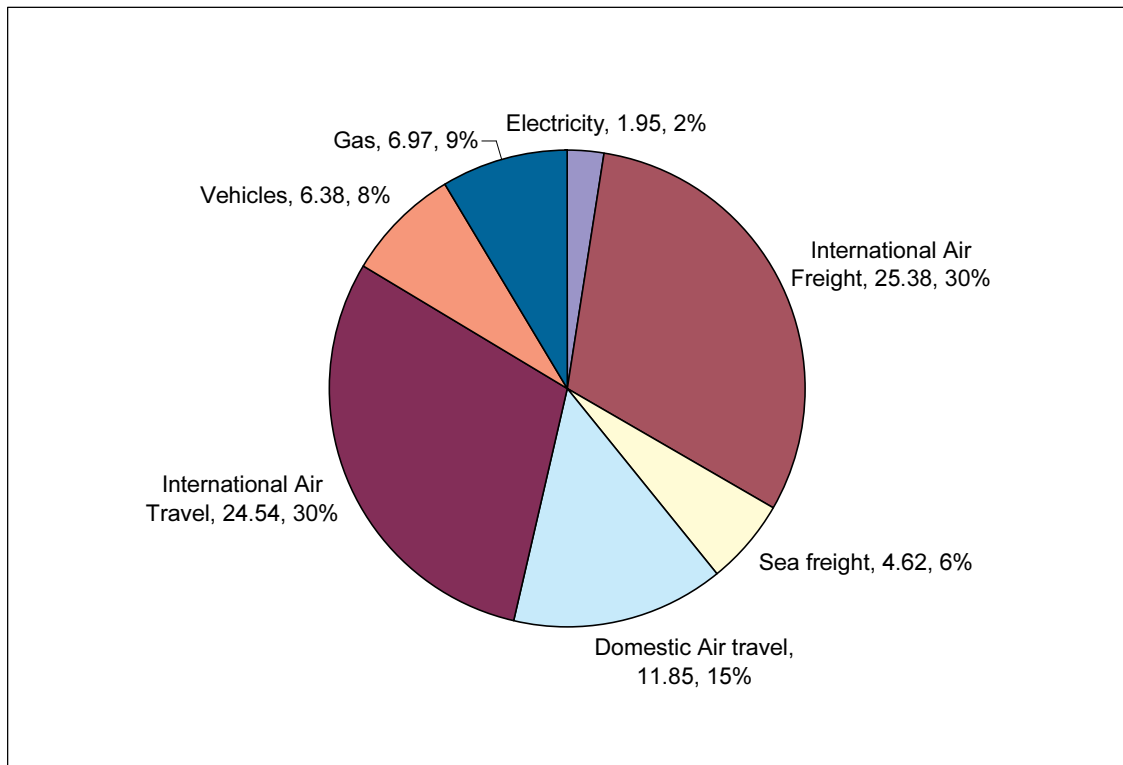


Introduction – Trilogy owns and operates a natural skin care product development and marketing business. Based in Wellington, New Zealand, the company employs 10 full time staff in New Zealand and 3 full time equivalents in Australia. In addition to Australia and New Zealand, the company sells its products through distributors in the UK, USA, France, Hong Kong and Japan. Products are contract manufactured in New Zealand and distributed around the world using sea and air freight.

Boundary – the diagram below shows the organisational structure used for describing Trilogy's greenhouse gas (GHG) emissions inventory, and what business units and activities were included in the carboNZero certification (green). Business units in yellow were excluded from the inventory and from certification. Note that during inventory period, there was no physical office in Melbourne, The business unit was used only to collect costs of sales staff in Australia. A physical office opened June 2007.



GHG emissions profile – the diagram below shows the emissions for Trilogy by emissions source. Trilogy total GHG emissions for this period was 82 tonnes carbon dioxide equivalents (CO₂e).



GHG emissions reduction commitments – Trilogy has developed a GHG emissions reduction plan. Some projects in this plan include:

- Reduce power usage in office by actions such as having a staff awareness campaign and reviewing lighting options
- Reduce international air freight by actions such as shipping in advance, and setting up a warehouse in Australia
- Reduce staff air travel by actions such as organising meetings more efficiently

Offset – 82 tonnes CO₂e. VERs¹ from PRE² landfill gas and windpower projects.

Verified by – Deloitte

Base Year – 01/06/06 – 31/05/07

Certification status – carboNZero certified “corporate operations”.

Valid until – 31 August 2008

¹ VERs are created by eligible projects for emissions reductions achieved up to the end of 2007.

² PRE - Projects to Reduce Emissions is a New Zealand government scheme for projects that are eligible under the Joint Implementation initiative of the Kyoto Protocol – see www.mfe.govt.nz