

Summary of carboNZero certification:



Toyota New Zealand Limited

Toyota New Zealand Ltd meets the requirements of carboNZero^{Cert™} certification having measured its greenhouse gas emissions in compliance with ISO 14064-1 committed to managing and reducing its emissions and neutralised its remaining unavoidable emissions through the cancellation of an appropriate number of verified carbon credits in respect of the operational activities of its organisation, but excluding vehicle freight.



Introduction¹ – Toyota New Zealand Ltd's principal business activities include:

- Importation to, and distribution within, New Zealand of new motor vehicles from the parent company (Toyota Motor Corporation) in Japan and from related companies in Europe, Australia and Thailand.
- The sale of new motor vehicles to the franchised dealer network and directly to major fleet customers.
- The sale of a range of after-market products distributed from the National Customer Centre at Palmerston North, including replacement parts, accessories, extended warranties and service contracts.
- The refurbishment and sale of used imported and ex-lease used vehicles at the Thames Signature Class facility.

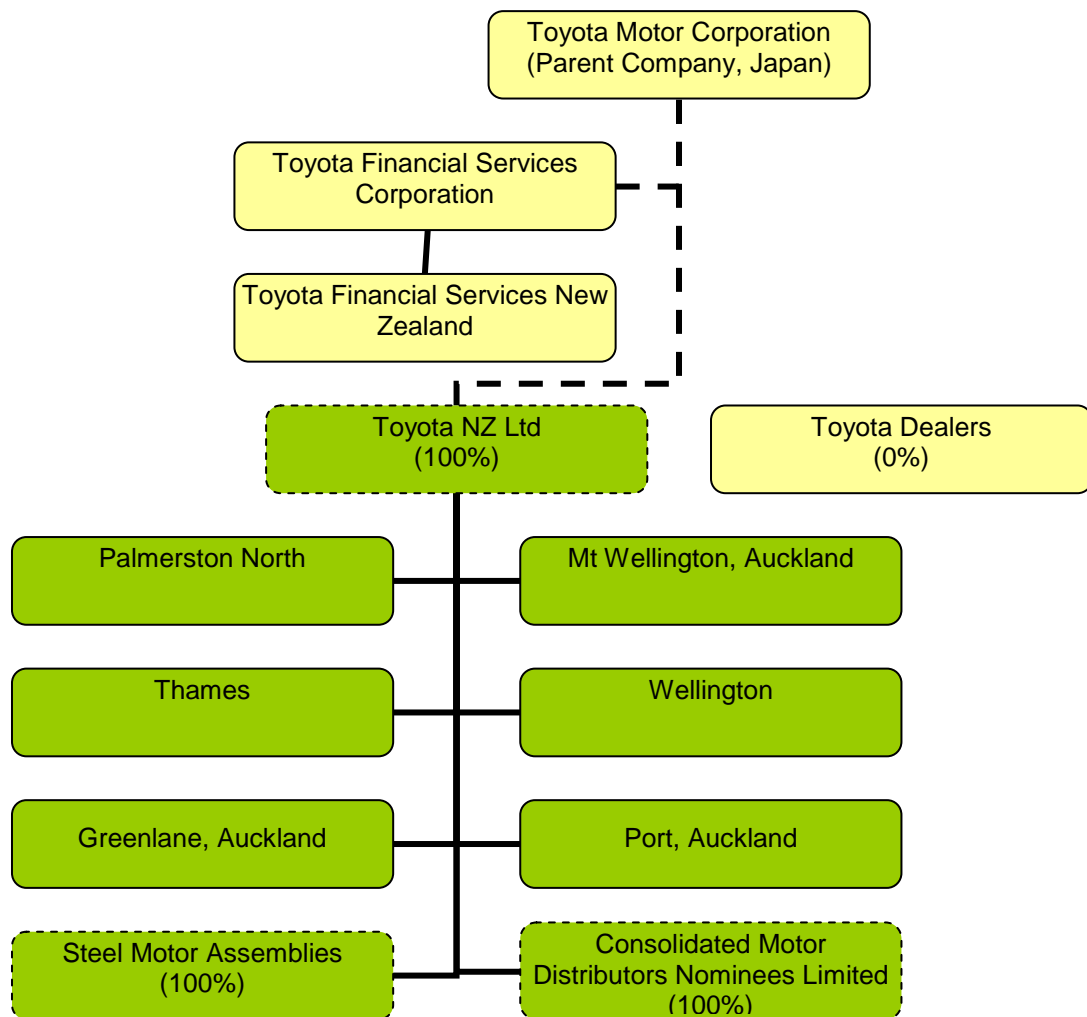
Boundary – the diagram below shows the organisational structure used for describing Toyota New Zealand Ltd's greenhouse gas (GHG) emissions inventory, and what business units were included in the carboNZero certification. Yellow business units were excluded from the certification.

¹ **Disclaimer:** This Disclosure Statement is a summary of the verified information considered for certification and the certification decision. It should not be taken to represent the full submission for certification. While every effort has been made to ensure that the information in this Disclosure Statement is accurate and complete, Landcare Research does not, to the maximum extent permitted by law, give any warranty or guarantee relating to the accuracy or reliability of the information.

Summary of carboNZero certification:



Toyota New Zealand Limited



Consolidation approach – operational control

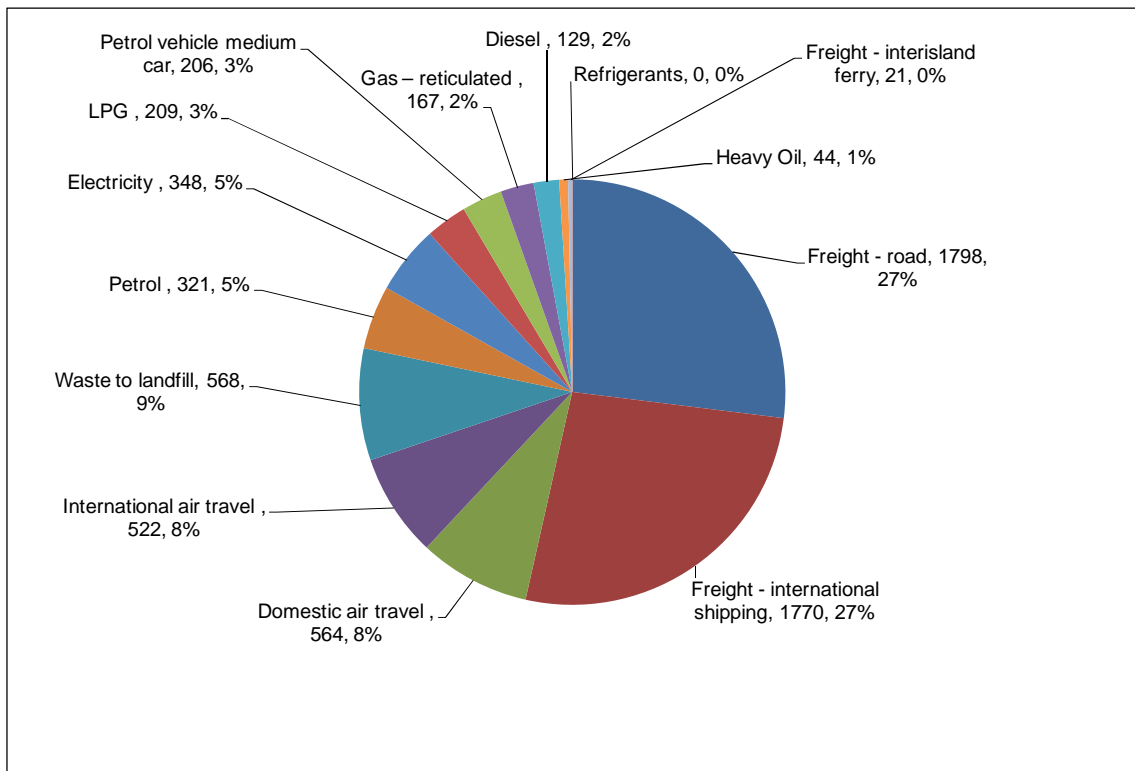
Base year – 01/4/2006 to 31/3/2007

Measurement period – 01/4/2009 to 31/3/2010

GHG emissions source inclusions – the diagram below shows the operational GHG emissions for Toyota New Zealand Ltd by emissions source. Toyota New Zealand Ltd's total emissions for this period were 6,668 tonnes carbon dioxide equivalents (CO₂e), comprising 1,077 tonnes CO₂e Scope 1, 348 tonnes CO₂e Scope 2 and 5,244 tonnes CO₂e Scope 3 emissions. Note that Toyota NZ have chosen to measure but exclude the emissions sources associated with vehicle freight from their carboNZero certification. These emissions sources will continue to be measured and managed as part of the entire inventory (please see the associated CEMARS disclosure page).

Summary of carbonZero certification:

Toyota New Zealand Limited



GHG emissions source exclusions – The following emissions sources were excluded from the emissions inventory:

- Staff taxi travel
- Freight of vehicle parts
- Solvents
- Paint application

GHG emissions reduction commitments – Toyota New Zealand Ltd has developed a GHG emissions reduction plan. Some projects in this plan include:

- Continue energy saving measures and on-going vigilance of existing efforts introduced across TNZ premises;
- Continued promotion of individual staff actions which can reduce power and progress reporting towards end of year target;
- Continued focus on reducing business travel (less trips) and promotion of alternatives;
- Staff incentives to choose efficient models;
- Improved vehicle fuel economy of vehicles introduced into company fleet and continued promotion of fuel saving driving techniques.

Summary of carboNZero certification:



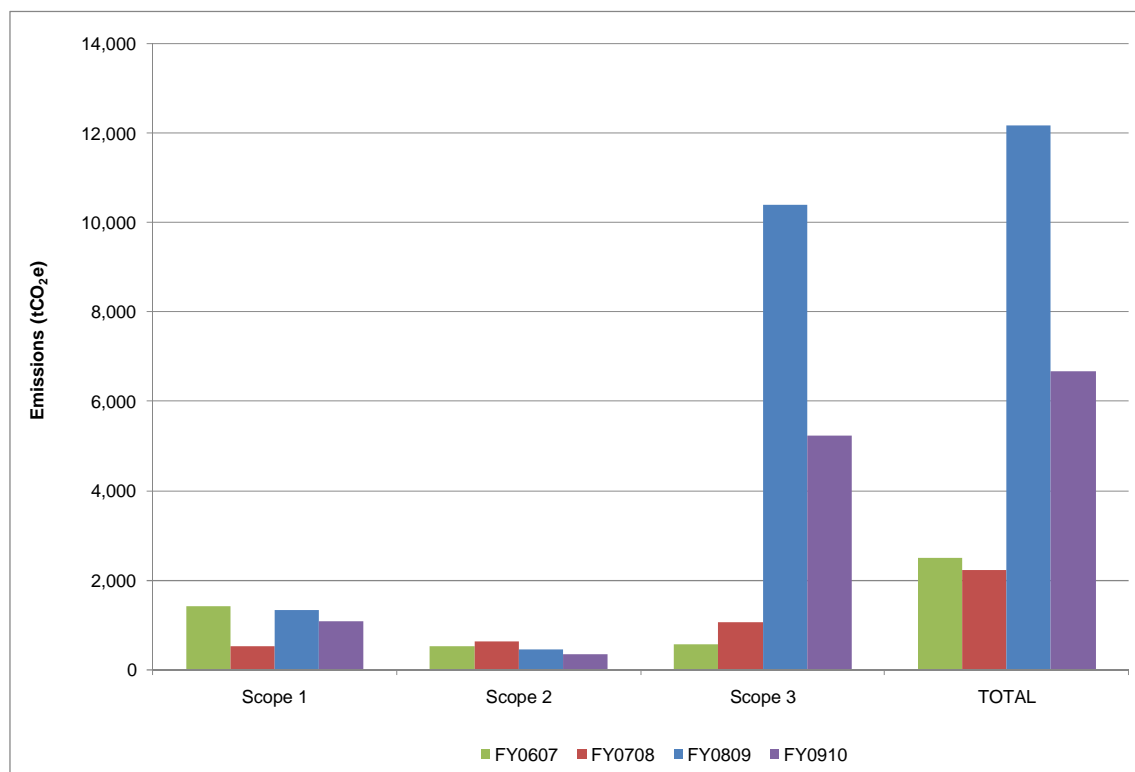
Toyota New Zealand Limited

GHG emissions reduction report against last year's plan –

A comparison between the base year (1/4/06 to 31/3/07) and this measurement period (1/4/09 to 31/3/10) for comparable emissions sources included (i.e. emissions sources included in both reporting periods) shows that emissions for the total of these sources have decreased by 37tCO₂e compared to the base year, as shown in the table below. Total GHG emissions for the period were 6,888 tCO₂e, compared to 2,504 tCO₂e for the base year (FY2006/07). This change in emissions is due to the inclusion of vehicle freight (of used and new vehicle imports) in the measured emissions sources in this latest reporting period, and the inclusion of waste to landfill and refrigerant emissions sources.

	FY0910	FY0607	Change
Emissions source	Tonnes CO ₂ e	Tonnes CO ₂ e	Tonnes CO ₂ e
Comparable emissions	2,466.98	2,504.30	-37.32
Additional emissions sources (not measured during base year)	4,201.80	Not measured	n/a
Total	6,668.78		

Emission reductions from the base year were achieved in this reporting period from all sources except petrol and air travel. The following diagram illustrates the comparison between Scope 1, Scope 2 and Scope 3 emissions for the four reporting periods to date.



Summary of carboNZero certification:



Toyota New Zealand Limited

Please note: this graph includes the entire emissions including those covered by their CEMARS certification. The change in total emissions between the previous inventory was due to the increase in accuracy of the data collection for freight.

Offset – 2757 tonnes CO₂e VERs² from Palmerston North City Council's Landfill to Gas project. Serial numbers PREVER-CMSLTD-AWAPUNI-07-0000015316 ~ PREVER-CMSLTD-AWAPUNI-07-0000017815 have been cancelled (or equivalent) on the Markit Environmental Registry. Carbon credits were not required to offset emissions from purchased electricity because all electricity is purchased from Meridian Energy. Emissions associated with vehicle freight were excluded from the offset required for carboNZero certification

Verified by – AsureQuality

Threshold of materiality – excluded emissions do not exceed 5% of the total footprint for organisation and product boundary stated.

Level of assurance – reasonable assurance

Certification status – carboNZero certified “organisation” covering Toyota New Zealand’s organisational GHG emissions, excluding vehicle freight.

Certificate number – 2010083J

Valid until – 30 June 2011

Toyota New Zealand Ltd, National Customer Centre, Roberts Lane , PO Box 46, Palmerston North, New Zealand, 4440; Tel: +64 (0)6 350 3400, Email: e: dialogue@toyota.co.nz, Web: www.toyota.co.nz

² VERs are created by eligible projects for emissions reductions achieved up to the end of 2007.