

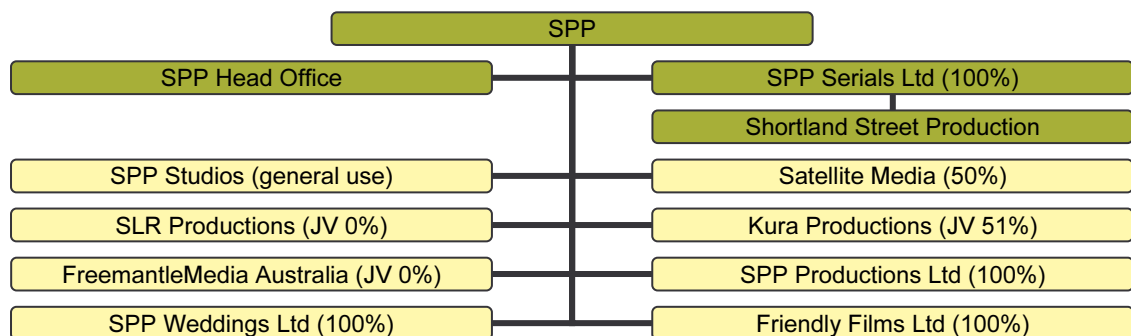
Summary of carbonZero certification: South Pacific Pictures Ltd



Introduction – South Pacific Pictures (SPP) is a film and television production company based in Auckland, New Zealand. As stated on their website¹:

“South Pacific Pictures has an international reputation for producing world-class television and film. In its 19 years it has produced more than 3000 hours of programming. Drama series and serials, feature films, and more recently, entertainment, reality programming and documentaries are all part of the programming mix. The current slate includes work for New Zealand, Australian, Canadian and UK broadcasters.”

Boundary – the diagram below shows the organisational structure used for describing SPP’s emissions inventory, and what business units were included in the carbonZero certification. **Yellow business units were excluded from certification.**



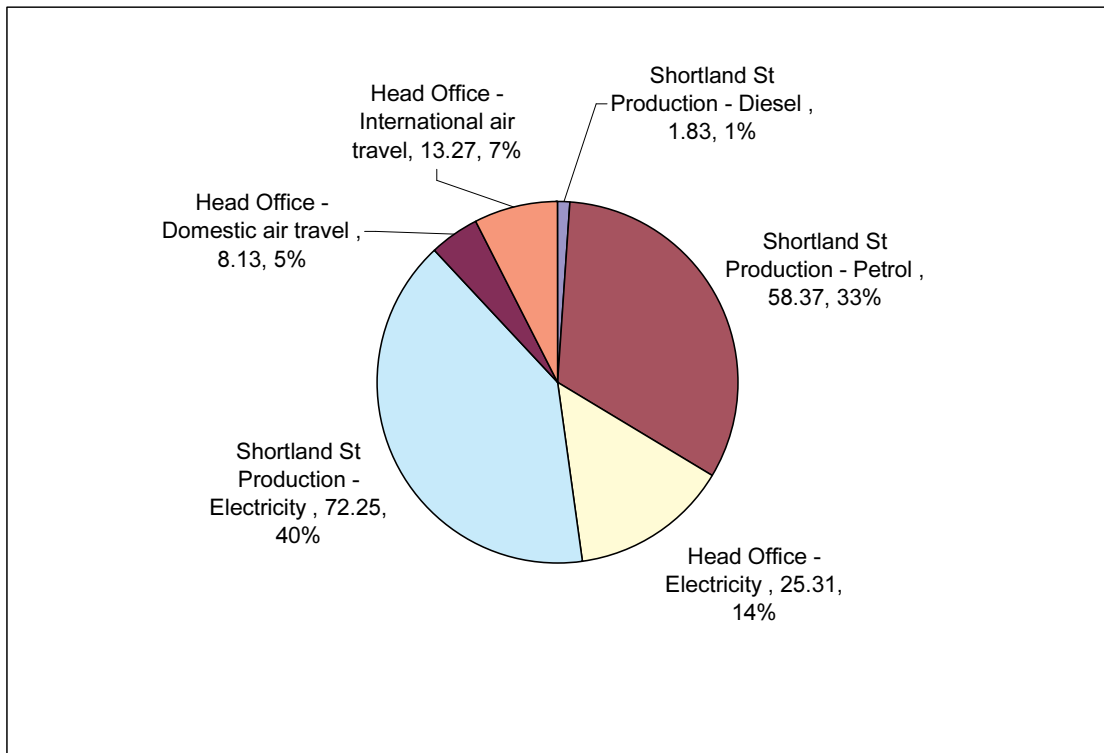
Consolidation approach – operational control

GHG emissions source inclusions – South Pacific Pictures has measured GHG emissions from the business units within the boundary described above, including:

- diesel and petrol used by fleet vehicles
- electricity used in studios and offices
- domestic and international air travel
- diesel used in generators during offsite filming

The diagram below shows the emissions for SPP by business unit. SPP’s total emissions for this period were 272 tonnes carbon dioxide equivalents (CO₂e) for the inventory boundary described above.

¹ www.southpacificpictures.com/default_corporate.spp



GHG emissions source exclusions – the following list of emissions sources was excluded from the GHG emissions inventory:

- emissions during offsite filming other than diesel use for generators and diesel and petrol used by vehicles
- contracted sound editing
- couriers and general freight
- staff commuting
- waste to landfill

GHG emissions reduction commitments – SPP has developed an Emissions Reduction Plan. Some projects in this plan include:

- energy efficiency education programme for staff
- efficient driving education
- introduce tools to track speeds, distances and routes taken by vehicles
- occupancy sensors in studios to control house lighting
- teleconferencing

Offset – 272 tonnes CO₂e. VERs² from TrustPower Tararua II PRE³ windfarm project

Verified by – AsureQuality

Level of assurance – Limited assurance

² VERs are created by eligible projects for emissions reductions achieved up to the end of 2007.

³ PRE - Projects to Reduce Emissions is a New Zealand government scheme for projects that are eligible under the Joint Implementation initiative of the Kyoto Protocol – see www.mfe.govt.nz

Summary of carboNZero certification: South Pacific Pictures Ltd



Threshold of materiality – excluded emissions do not exceed 5% of the total footprint for the organisation boundary measured.

Base year – 01/10/2005 – 30/09/2006

Measurement period – 01/10/2006 – 30/09/2007

Certification status – carboNZero certified organisation including Head Office, Studios and Shortland Street production

Certificate number – 2008070

Certification valid until – 31 December 2009