

Summary of carboNZero certification:

SATO New Zealand Limited

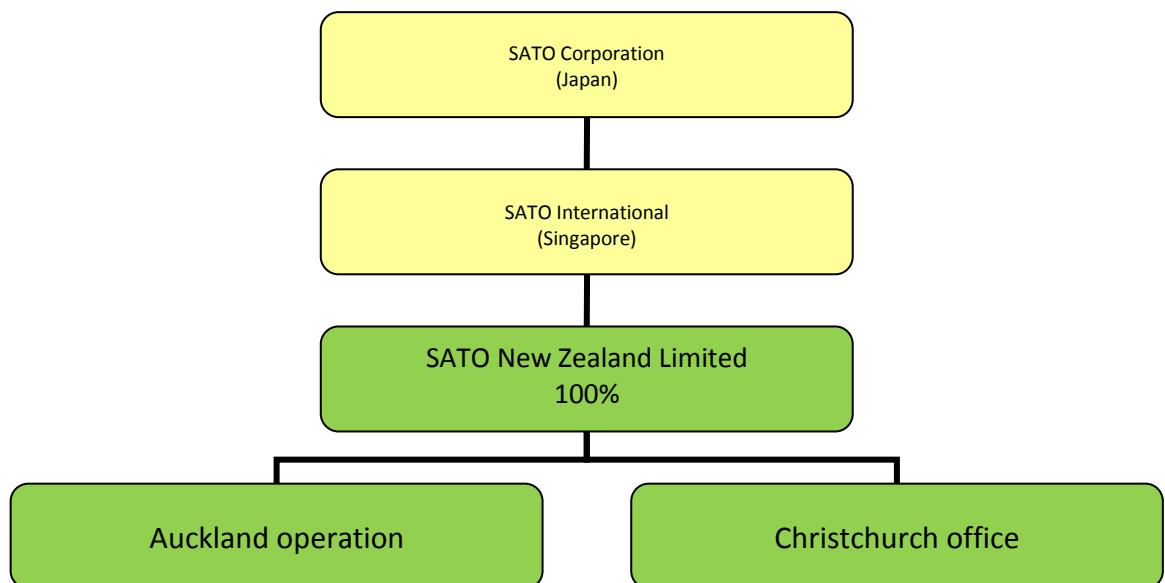


SATO New Zealand Limited meets the requirements of carboNZero^{Cert™} certification having measured its greenhouse gas emissions in compliance with ISO 14064-1:2006, committed to managing and reducing its emissions, and neutralised its remaining unavoidable emissions through the cancellation of an appropriate number of carbon credits in respect of the operational activities of its organisation.



Introduction¹ – SATO New Zealand Limited manufactures plain and prime labels, and sells barcoding equipment, scanners, wireless infrastructure and traceability solutions. Based in Auckland, SATO New Zealand Limited is descendent of such well known kiwi companies as Quik Stik, Checkpoint and Walker Datavision.

Boundary – the diagram below shows the organisational structure used for describing SATO's greenhouse gas (GHG) emissions inventory, and what business units were included in the carboNZero certification. Yellow business units were excluded from the certification.



Consolidation approach – operational control

Base year – 01/04/2007 to 31/03/2008

Measurement period – 01/04/2009 to 31/03/2010

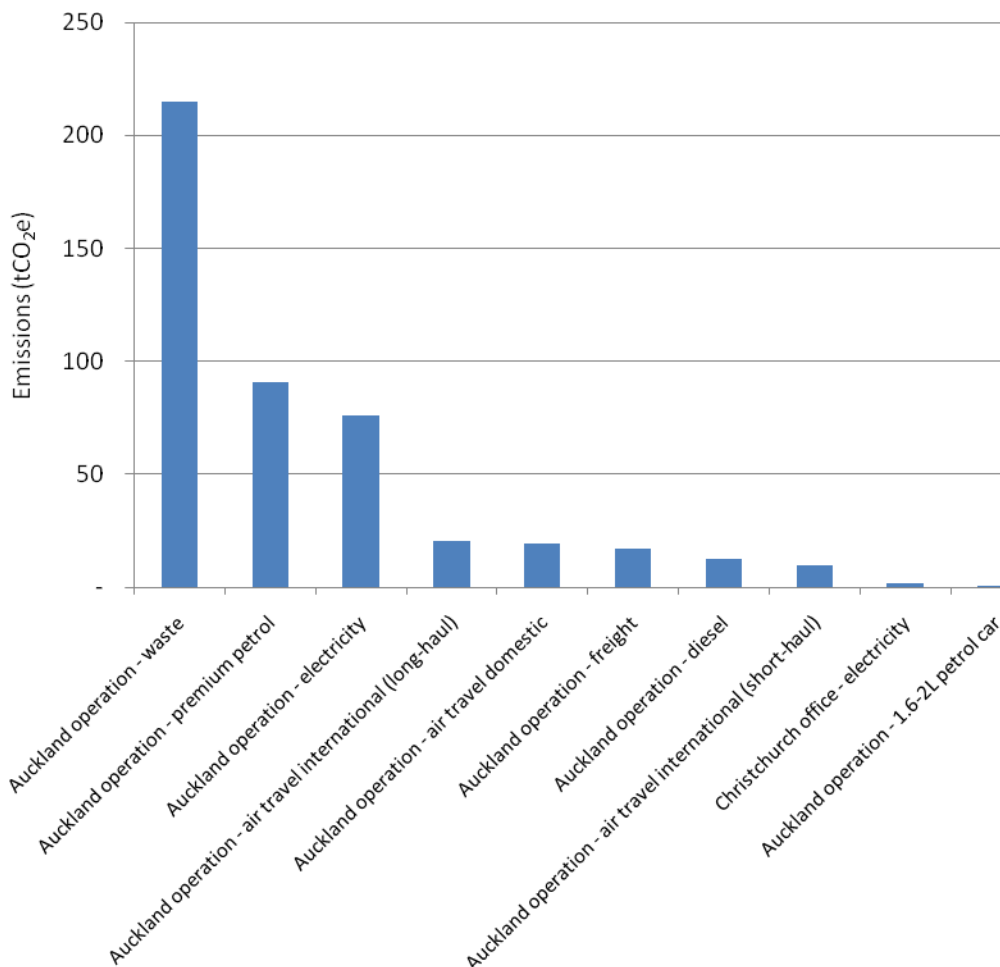
¹ **Disclaimer:** This Disclosure Statement is a summary of the verified information considered for certification and the certification decision. It should not be taken to represent the full submission for certification. While every effort has been made to ensure that the information in this Disclosure Statement is accurate and complete, Landcare Research does not, to the maximum extent permitted by law, give any warranty or guarantee relating to the accuracy or reliability of the information.

Summary of carboNZero certification:

SATO New Zealand Limited



GHG emissions source inclusions – the diagram below shows the operational GHG emissions for SATO by emissions source. SATO's total emissions for this period were 463.30 tonnes carbon dioxide equivalents (CO₂e) comprising 104.11 tonnes CO₂e Scope 1, 77.39 tonnes CO₂e Scope 2 and 281.79 tonnes CO₂e Scope 3 emissions.



GHG emissions source exclusions – some company travel was excluded based on an estimate that it was *de minimis*

GHG emissions reduction commitments – SATO has developed a GHG emissions reduction plan. Some projects in this plan include:

- Work with paper recycler to achieve recycling solution for paper based waste material
- Encourage car sharing where possible
- Investigate new areas for sensor lights

Summary of carboNZero certification:

SATO New Zealand Limited



GHG emissions reduction report against last year's plan – Total GHG emissions for SATO were 463.30 tonnes CO₂e compared to 475.08 tonnes of CO₂e for the 2nd measurement period. This is a decrease of 11.78 tonnes CO₂e.

SATO's largest emissions source was waste to landfill and remained almost constant, increased by 5% from 137.55 tonnes to 144.23 tonnes waste. The second largest emissions source was premium petrol use. It decreased by 7% from 39,89 litres to 37,19 litres. The electricity use of the Auckland operation decreased by 2% from 518,202 kWh to 506,050 kWh. International long-haul air travel decrease by 21% from 155,975 passenger km to 122,607 passenger km.

Offset – 462 tonnes CO₂e. VERs² from windpower projects. Serial numbers 330938-330963 and 412616-413051 have been cancelled (or equivalent) on the carboNZero registry. Carbon credits were not required to offset emissions from purchased electricity as all electricity is purchased from Meridian Energy.

Verified by – AsureQuality

Threshold of materiality – excluded emissions do not exceed 5% of the total footprint for organisation and product boundary stated.

Level of assurance – reasonable assurance

Certification status – carboNZero certified "organisation".

Certificate number – 2010100J

Valid until – 31 July 2013

SATO New Zealand Limited, 30 Apollo Drive, Mairangi Bay, Auckland 0623. New Zealand.
Tel: +64 9 477 2222, Email: Kerry.Langley@satonewzealand.com, Web: www.satonewzealand.com

² VERs are created by eligible projects for emissions reductions achieved up to the end of 2007.