

The Royal Society of New Zealand (RSNZ)

The Royal Society of New Zealand meets the requirements of the carboNZero^{Cert™} certification having measured its greenhouse gas emissions in compliance with ISO 14064-1, committed to reducing its emissions and mitigated its remaining unavoidable emissions in respect of the operational activities of its organisation.



Introduction¹ – the Royal Society of New Zealand (RSNZ) is an independent, national academy of sciences, and a federation of some 60 scientific and technological societies and individual members. RSNZ seeks to promote a critical awareness of technology in schools, industry and society. The RSNZ administers several funds for science and technology, publishes eight journals, offers science advice to government and fosters international scientific contact and co-operation. A comprehensive listing of the funds, grants and programmes administered by the RSNZ is available at www.rsnz.org.

The RSNZ is located Thorndon, Wellington. RSNZ operates from 3 separate buildings at that address: Fleming House, Science House and Marsden Cottage. In addition, four publications staff work from their respective home offices.

Boundary – the diagram below shows the organisational structure used for describing The RSNZ's greenhouse gas (GHG) emissions inventory. All facilities in green are included in the GHG emissions boundary and in the certification. In accordance with the carboNZero programme, all facilities in yellow are outside the GHG emissions boundary and therefore are outside the scope of certification.

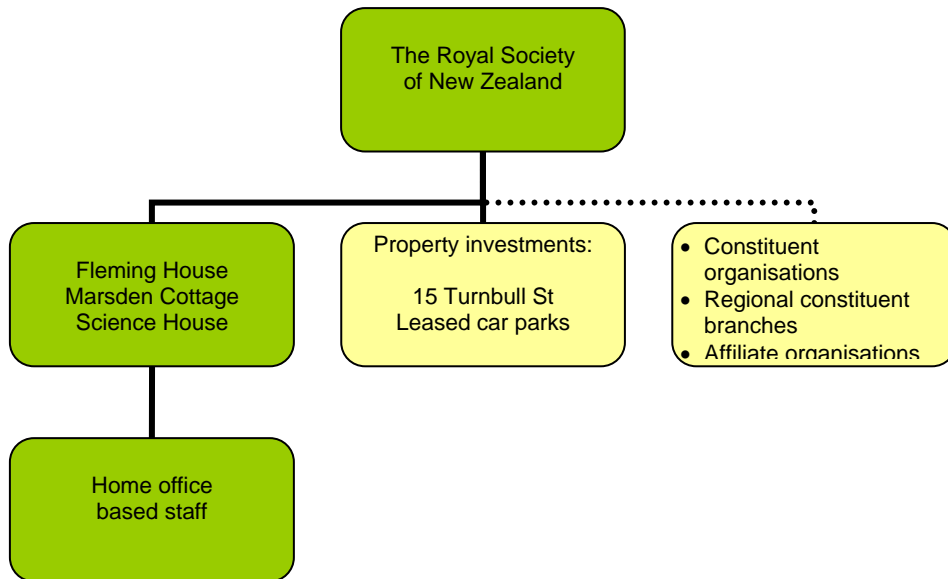
In undertaking its business functions and administration of the various grants, funds and programmes, staff travel domestically and internationally. In addition, travel awards are made to successful applicants of grants, funds and programmes (e.g. funding scientists and students to attend to overseas events). For the purposes of this GHG Inventory, non-staff air travel is included where RSNZ has purchased the tickets.

RSNZ property investments and bare land leased out as a car park are excluded from the inventory boundary in accordance with carboNZero programme methodology.

Journals are published by a local printer. GHG emissions associated with the printing processes are excluded from the inventory; however, freight (domestic and international) associated with their delivery is included in the inventory.

¹ **Disclaimer:** This Disclosure Statement is a summary of the verified information considered for certification and the certification decision. It should not be taken to represent the full submission for certification. While every effort has been made to ensure that the information in this Disclosure Statement is accurate and complete, Landcare Research does not, to the maximum extent permitted by law, give any warranty or guarantee relating to the accuracy or reliability of the information.

The Royal Society of New Zealand (RSNZ)



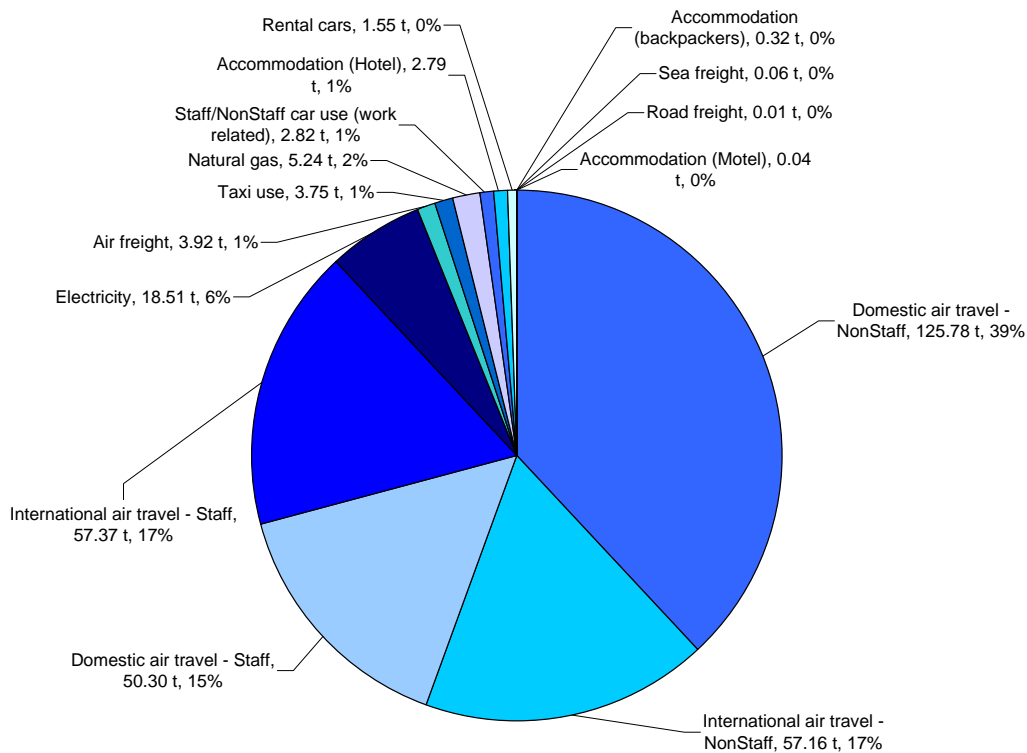
Consolidation approach – operational control

Base year – 01/07/2006 to 30/06/2007

Measurement period – 01/07/2007 to 30/06/2008

GHG emissions source inclusions – the diagram below shows the operational GHG emissions for RSNZ by emissions source. RSNZ's total emissions for this period were 329.62 tonnes carbon dioxide equivalents (CO₂e) comprising 9.62 tonnes CO₂e Scope 1, 18.51 tonnes CO₂e Scope 2 and 301.50 tonnes CO₂e Scope 3 emissions.

The Royal Society of New Zealand (RSNZ)



GHG emissions source exclusions – the following emissions sources were excluded:

- Some domestic and international flights where the cost was shared or subsidised by a third party
- Disposal of office waste to landfill, estimated to be *de minimis*
- Bus and cable car travel – estimated to be *de minimis*
- Electricity use and disposal of waste to landfill for part time journal publishing staff working from home
- Publishing of the RSNC's seven journals

GHG emissions reduction commitments – RSNZ has developed a GHG emissions reduction plan. Some projects in this plan include:

- Tighten travel approval procedures by issuing new staff/committee guidelines
- Install bike racks for visitors, and separately for staff
- Further development of e-publishing and staff awareness
- Continue use of Virtual Visitor Programme with the Royal Society of London

GHG emissions reduction report against last year's plan – The RSNZ managed to reduce Scope 1 GHG emissions but Scope 2 and 3 GHG emissions rose. Overall, there was an increase of 20 tonnes CO₂e (10%) when the two consecutive inventories were compared using the same emissions factors. This was mainly due to air travel continuing to increase.

Summary of carboNZero certification:

The Royal Society of New Zealand (RSNZ)

Offset – 330 tonnes CO₂e. VERs² from PRE³ windpower projects. Serial numbers 331233-331562 have been cancelled on the carboNZero register.

Verified by – AsureQuality

Threshold of materiality – excluded emissions do not exceed 5% of the total footprint for organisation boundary stated.

Level of assurance – reasonable assurance

Certification status – carboNZero certified “organisation” covering electricity and gas consumption, domestic road and air transport, domestic business accommodation, international air travel, freight/delivery of journals and publications.

Certificate number – 2009042J

Valid until – 30 September 2009

The Royal Society of New Zealand (RSNZ), 4 Halswell Street, Thorndon, Wellington
Tel: +64 (0)4 473 1841, Email: info@royalsociety.org.nz, Web: www.royalsociety.org.nz

² VERs are created by eligible projects for emissions reductions achieved up to the end of 2007.

³ PRE - Projects to Reduce Emissions is a New Zealand government scheme for projects that are eligible under the Joint Implementation initiative of the Kyoto Protocol – see www.mfe.govt.nz