

Summary of carboNZero certification:



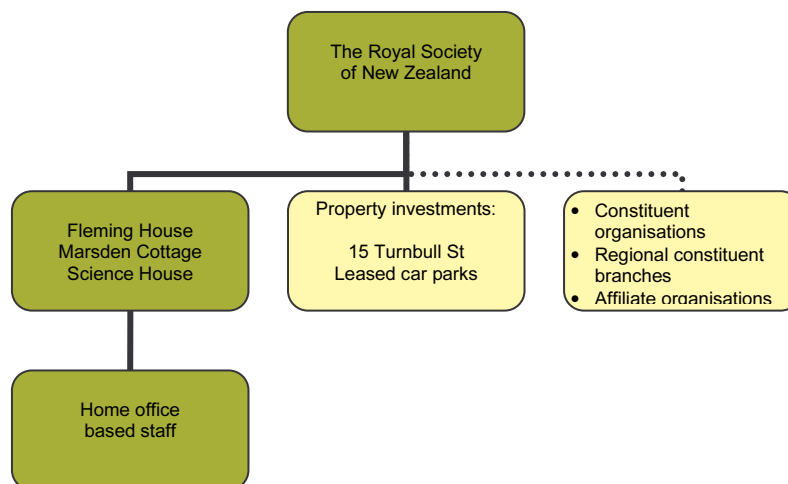
The Royal Society of New Zealand (RSNZ)



Introduction – the Royal Society of New Zealand (RSNZ) is an independent, national academy of sciences, and a federation of some 60 scientific and technological societies and individual members. RSNZ seeks to promote a critical awareness of technology in schools, industry and society. The RSNZ administers several funds for science and technology, publishes eight journals, offers science advice to government and fosters international scientific contact and co-operation. A comprehensive listing of the funds, grants and programmes administered by the RSNZ is available at www.rsnz.org.

The RSNZ is located Thorndon, Wellington. RSNZ operates from 3 separate buildings at that address: Fleming House, Science House and Marsden Cottage. In addition, 4 publications staff work from their respective home offices.

Boundary – the diagram below shows the organisational structure used for describing The Royal Society of New Zealand's greenhouse gas (GHG) emissions inventory. All facilities in green are included in the GHG emissions boundary and in the certification. In accordance with the carboNZero programme, all facilities in yellow are outside the GHG emissions boundary and therefore are outside the scope of certification.



In undertaking its business functions and administration of the various grants, funds and programmes, staff travel domestically and internationally. In addition, travel awards are made to successful applicants of grants, funds and programmes (e.g. funding scientists and students to attend to overseas events). For the purposes of this GHG Inventory, non-staff air travel is included where RSNZ has purchased the tickets.

RSNZ property investments and bare land leased out as a car park are excluded from the inventory boundary in accordance with carboNZero programme methodology.

Summary of carbonZero certification:

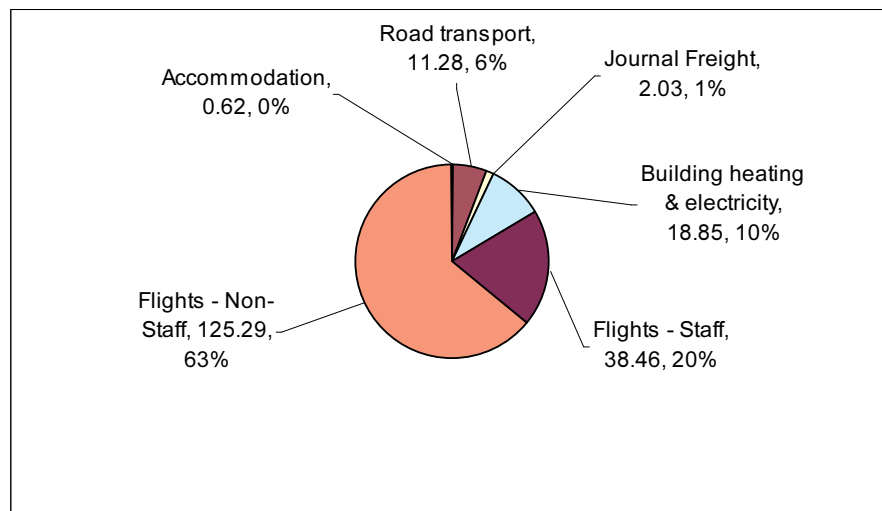


The Royal Society of New Zealand (RSNZ)

Journals are published by a local printer. GHG emissions associated with the printing processes are excluded from the inventory; however, freight (domestic and international) associated with their delivery is included in the inventory.

Consolidation approach – operational control.

GHG emissions profile – the diagram below shows the operational GHG emissions for The Royal Society of New Zealand. The combined total emissions for this period were 197 tonnes carbon dioxide equivalents (CO₂e).



GHG emissions reduction commitments – The Royal Society of New Zealand has developed a GHG emissions reduction plan. Some projects in this plan include:

- Installation and use of video conferencing equipment to reduce business travel requirements.
- Review and tightening of business travel procedures
- Staff education and raised awareness on building energy efficiency
- Migration from hard copy to electronic publishing of journals
- Installation of staff bike racks and encouragement of cycling and walking for staff commuting and local business activities.

Offset – 197 tonnes CO₂e. VERs¹ from PRE² wind farm carbon credits. No significant sources of emissions were excluded from certification or offsetting.

Verified by – PricewaterhouseCoopers

Base Year – 01/07/2006 to 30/06/2007

Certification status – carbonZero certified “organisation” covering building electricity and gas consumption, domestic road and air transport, domestic business accommodation, international air travel, freight/delivery of journals and publications.

¹ VERs are created by eligible projects for emissions reductions achieved up to the end of 2007.

² PRE - Projects to Reduce Emissions is a New Zealand government scheme for projects that are eligible under the Joint Implementation initiative of the Kyoto Protocol – see www.mfe.govt.nz

Summary of carboNZero certification:

The Royal Society of New Zealand (RSNZ)



Valid until – 30 September 2008.