

## Summary of carboNZero certification:

### Ricoh NZ Limited



*“Ricoh meets the requirements of the carboNZero<sup>Cert™</sup> certification having measured its greenhouse gas emissions in compliance with ISO 14064-1 including life cycle emissions associated with selected services, reduced its emissions and mitigated its remaining unavoidable emissions in respect of its organisation and its energy efficient<sup>1</sup> printers and multifunctional devices.”*

# RICOH

**Introduction<sup>2</sup>** – Ricoh New Zealand Ltd (Ricoh) is a wholly owned subsidiary of Ricoh Company Ltd., Japan. The company’s New Zealand head office is located in central Auckland, with branch offices in the five main regional centres including Hamilton, Palmerston North, Wellington, Christchurch and Dunedin. In addition, there is a national network of dealers and service agents to provide sales, service and support in all areas of the country. Ricoh products and services provide customers with tools to lower cost of ownership by providing guidance for using fewer consumables and saving energy while enhancing productivity. Ricoh recognises environmental sustainability as an integral part of all business activities. Ricoh assumes responsibility for sustainability and approaches this on a company-wide basis. It is Ricoh’s goal to consistently maintain an industry leadership position in this area, and continually innovate with sustainability in mind. To demonstrate this leadership Ricoh have measured and offset the emissions associated with customer electricity use in their energy efficient photocopiers.

**Boundary** – the diagram below shows the organisational structure used for describing Ricoh’s greenhouse gas (GHG) emissions inventory, and what business units were included in the carboNZero certification. Yellow business units were excluded from the certification. The yellow business units were excluded from the measurement since they do not feature the latest energy efficiency technology<sup>2</sup>.

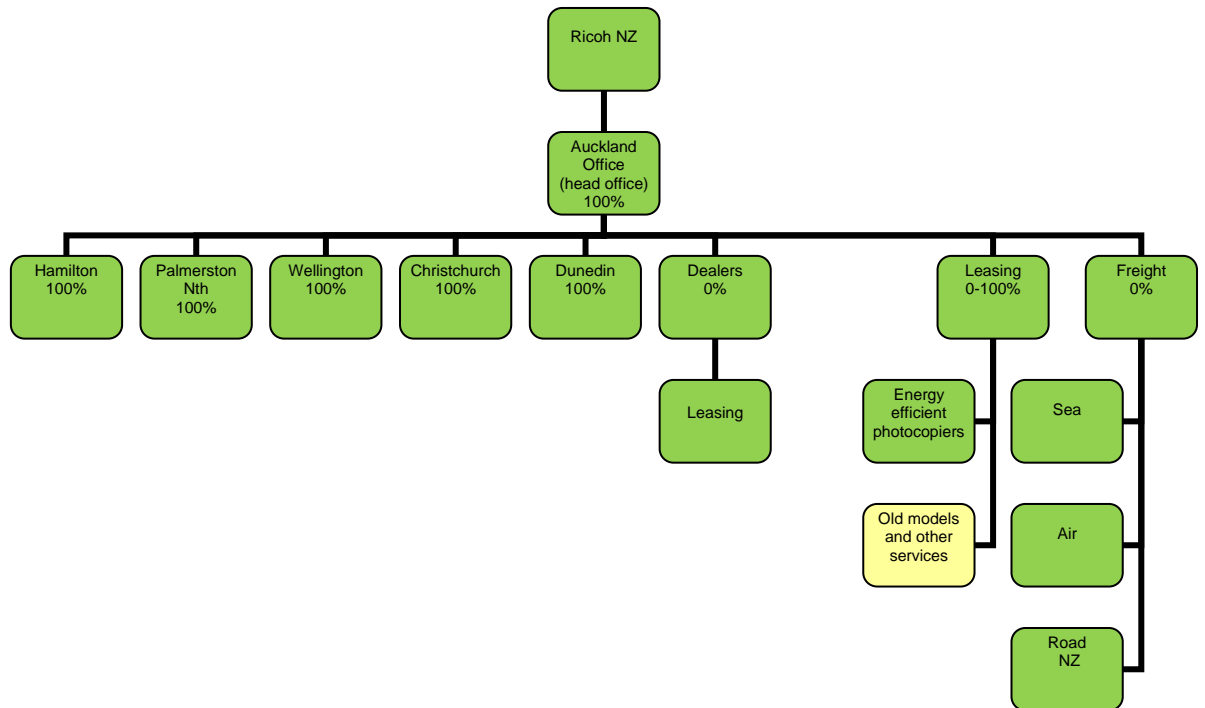
---

<sup>1</sup> The Ricoh products covered by the carboNZero certification are on a "by model in the field" basis and will be updated annually as the model population changes. The current list covers the 2008 financial year (to March 2009) and includes most Ricoh devices less than 3 years old and on a full maintenance service contract, all of which employ electrically efficient technologies such as Quick Start Up (QSU), auto-timer switches and are Energy Star rated. Over time, as older less electrically efficient devices will be replaced, it is expected that Ricoh will achieve 100% product coverage. In the interim, customers using older, less efficient devices will be encouraged to upgrade their existing machines in order to save electricity as well as have their greenhouse gas emissions in respect of their device/s offset by Ricoh.

<sup>2</sup> **Disclaimer:** This Disclosure Statement is a summary of the verified information considered for certification and the certification decision. It should not be taken to represent the full submission for certification. While every effort has been made to ensure that the information in this Disclosure Statement is accurate and complete, Landcare Research does not, to the maximum extent permitted by law, give any warranty or guarantee relating to the accuracy or reliability of the information.

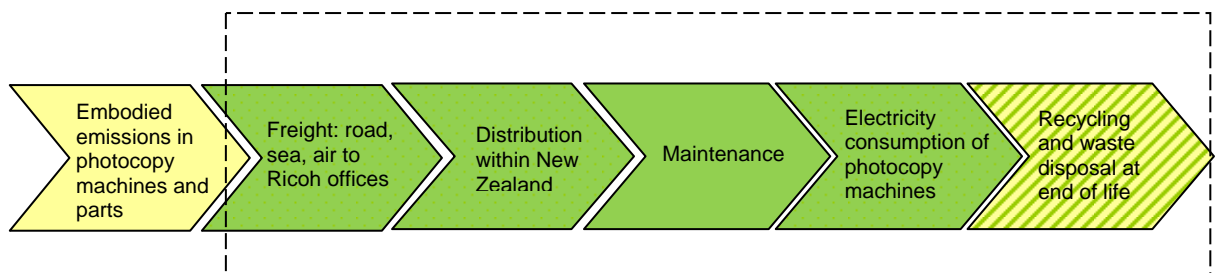
# Summary of carboNZero certification:

Ricoh NZ Limited



**Figure 1:** Ricoh organisational structure. The percentage figures indicate the level of ownership by Ricoh New Zealand.

For the certified service<sup>3</sup>, additional life cycle GHG emissions were included in the inventory as shown in the diagram below. The yellow life cycle stage was not required and not measured for the service inventory. The striped life cycle stages are covered except for the emissions source exclusions listed below.



**Figure 2:** Service boundaries of Ricoh's carboNZero certified photocopiers.

**Consolidation approach** – operational control

**Base year** – 01/04/2007 to 31/03/2008

**Measurement period** – 01/04/2008 to 31/03/2009

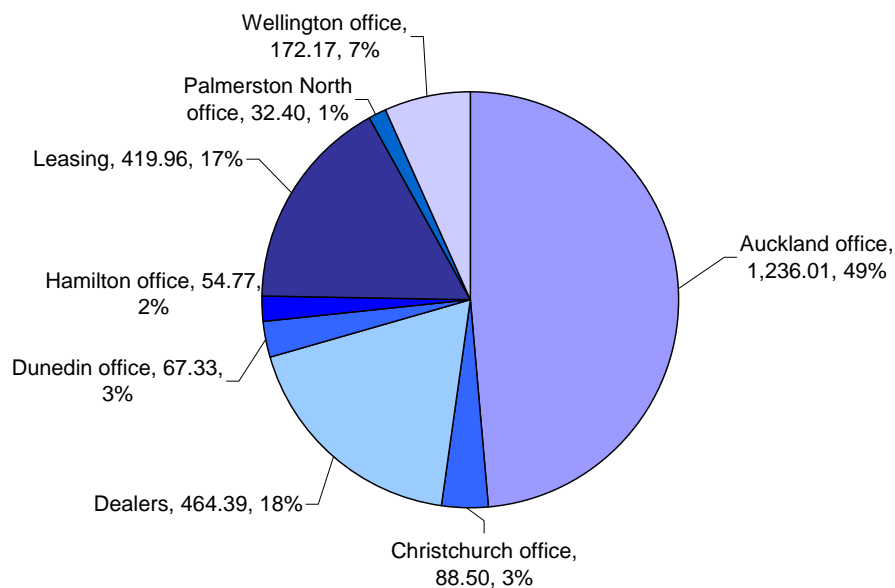
## Summary of carboNZero certification:



### Ricoh NZ Limited

**GHG emissions source inclusions** – the diagram below shows the operational GHG emissions for Ricoh by emissions source. Ricoh's total emissions for this period were 2,535.53 tonnes carbon dioxide equivalents (CO<sub>2</sub>e) comprising 488.33 tonnes CO<sub>2</sub>e Scope 1, 134.99 tonnes CO<sub>2</sub>e Scope 2 and 1,912.21 tonnes CO<sub>2</sub>e Scope 3 emissions.

Operational Scope 3 emissions account for 1,651.18 tonnes. Emissions from the electricity use of leased consumers photocopier machines and dealers' activities were 22% (419.96 tonnes CO<sub>2</sub>e) and 24% (464.39 tonnes CO<sub>2</sub>e) of all Scope 3 emissions.



**GHG emissions source exclusions** – the following emissions sources were excluded due to data unavailability outside Ricoh's control:

- Embodied emissions in replacement parts
- Non-recyclable waste at end-of-life of devices

**GHG emissions reduction commitments** – Ricoh has developed a GHG emissions reduction plan. Some projects in this plan include:

- Ensuring that prior to leaving the Ricoh premises, all machines have energy save and auto timer modes activated. Also, Technicians are to ensure customers are aware of energy saving modes
- To periodically review freight methods and frequencies
- To work with Ricoh dealers to provide information and support in the reduction of GHG emissions e.g. recycling solutions for waste, reduction in freight and courier movements etc.
- When selecting fleet vehicles to prioritise cars that use 91 octane fuel and those that are classed in the top three most fuel efficient in New Zealand in their class

**GHG emissions reduction report against last year's plan** – This is Ricoh's second emissions inventory report. Ricoh's total GHG emissions were 2,535.53 tonnes

## Summary of carboNZero certification:



### Ricoh NZ Limited

of CO<sub>2</sub>e for the period 1/04/2008 to 31/03/2009, whilst there were 2,116.99 tonnes of CO<sub>2</sub>e for the period 1/04/2007 to 31/03/2008. This is an increase of 20% (418.54 tonnes CO<sub>2</sub>e). However, if the dealers are not included (as they weren't included in last year's inventory), then Ricoh's total emissions would have decreased by 2% (45.85 tonnes CO<sub>2</sub>e). The increased emissions are due to a combination of increases in air freight and electricity consumption of leased machines. It should be noted that the number of leased machines increased from 6,900 to 11,057 (inclusive of dealers) between measurement periods and accounts for some of the increased emissions observed.

**Offset** – 2390 tonnes CO<sub>2</sub>e. VERs<sup>4</sup> PRE<sup>5</sup> windpower projects. Serial numbers 335867-338256 have been cancelled (or equivalent) on the carboNZero registry. Carbon credits were not required to offset emissions from purchased electricity because all electricity is purchased from Meridian Energy.

**Verified by** – Prescott Horn Limited

**Threshold of materiality** – excluded emissions do not exceed 5% of the total footprint for organisation.

**Level of assurance** –

Organisational inventory – verified to Reasonable Assurance  
Additional LCA GHG emissions – verified to Limited Assurance

**Certification status** – carboNZero certified “organisation” and “service” covering energy efficient printers and multifunctional devices.

**Certificate number** – 2009071J

**Valid until** – 30 June 2010.

Ricoh New Zealand Limited, Tel: +64 (0) 9 374 0701, Email: mbarriball@ricoh.co.nz,  
Web: www.ricoh.co.nz

---

<sup>4</sup> VERs are created by eligible projects for emissions reductions achieved up to the end of 2007.

<sup>5</sup> PRE - Projects to Reduce Emissions is a New Zealand government scheme for projects that are eligible under the Joint Implementation initiative of the Kyoto Protocol – see [www.mfe.govt.nz](http://www.mfe.govt.nz)