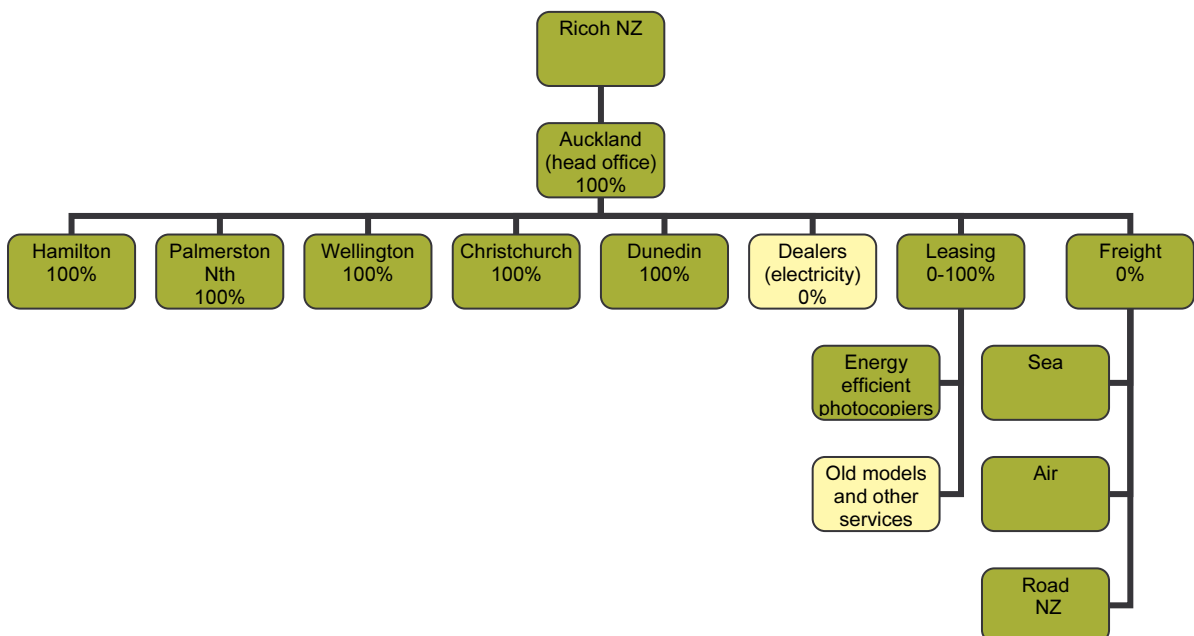


Summary of carboNZero certification: Ricoh NZ Limited



Introduction¹ – Ricoh New Zealand Ltd (Ricoh) is a wholly owned subsidiary of Ricoh Company Ltd., Japan. The company’s New Zealand head office is located in central Auckland, with branch offices in the five main regional centres including Hamilton, Palmerston North, Wellington, Christchurch and Dunedin. In addition, there is a national network of dealers and service agents to provide sales, service and support in all areas of the country. Ricoh products and services provide customers with tools to lower cost of ownership by providing guidance for using fewer consumables and saving energy while enhancing productivity. Ricoh recognises environmental sustainability as an integral part of all business activities. Ricoh assumes responsibility for sustainability and approaches this on a company-wide basis. It is Ricoh’s goal to consistently maintain an industry leadership position in this area, and continually innovate with sustainability in mind. To demonstrate this leadership Ricoh have measured and offset the emissions associated with customer electricity use in their energy efficient photocopiers.

Boundary – The figure below shows the organisational structure used for describing Ricoh’s greenhouse gas (GHG) emissions inventory, and what business units and business activities were included in the carboNZero certification. The yellow business units were excluded from the measurement due to insufficient data in the case of dealers and older model devices which do not feature the latest energy efficiency technology².

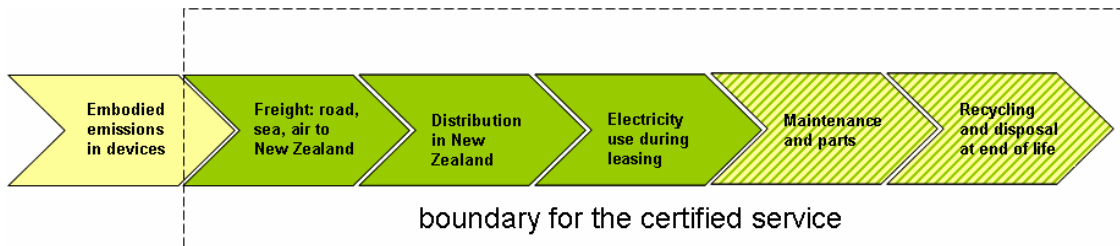


¹ **Disclaimer:** This Disclosure Statement is a summary of the verified information considered for certification and the certification decision. It should not taken to represent the full submission for certification. While every effort has been made to ensure that the information in this Disclosure Statement is accurate and complete, Landcare Research does not, to the maximum extent permitted by law, give any warranty or guarantee relating to the accuracy or reliability of the information.

Summary of carboNZero certification: Ricoh NZ Limited

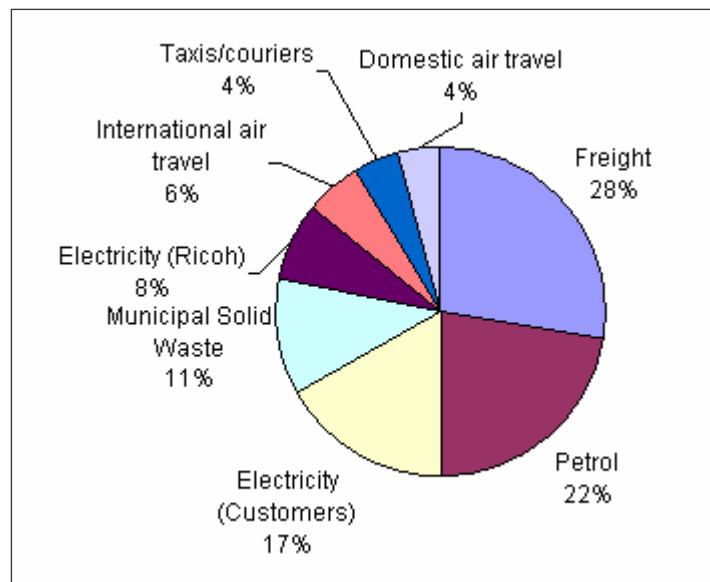


For the certified service², additional life cycle GHG emissions were included in the inventory as shown in the diagram below. The yellow life cycle stage was not required and not measured for the service inventory. The striped life cycle stages are covered except for the emissions source exclusions listed below.



Consolidation approach – Operational control approach.

GHG emissions profile – Total GHG emissions for Ricoh, including emissions associated with their photocopier service, were 2117 tonnes of carbon dioxide equivalents (CO₂e) for the 12 month period 1/4/07 to 31/3/08. The figure below shows Ricoh’s organisational and energy efficient photocopier service emissions by emission source. Ricoh’s emissions were largely due to freight (importing and distribution), petrol used in company operated cars, customer electricity use, and waste going to landfill.



² The Ricoh products covered by the carboNZero certification are on a "by model in the field" basis and will be updated annually as the model population changes. The current list covers the 2007 financial year (to March 2008) and includes most Ricoh devices less than three years old and on a full maintenance service contract, all of which employ electricity efficient technologies such as Quick Start Up (QSU), auto-timer switches and are Energy Star rated. Over time, as older less electricity efficient devices will be replaced, it is expected that Ricoh will achieve 100% product coverage. In the interim, customers using older less efficient devices will be encouraged to upgrade their existing machines in order to save electricity as well as have their greenhouse gas emissions in respect of their device/s offset by Ricoh.

Summary of carboNZero certification: Ricoh NZ Limited



GHG emissions source exclusions – the following emissions sources were excluded due to data unavailability outside Ricoh’s control:

- Embodied emissions in replacement parts
- Servicing undertaken by dealers
- Non-recyclable waste at end-of-life of devices
- Small items sent by international air freight

GHG emissions reduction commitments – Ricoh has developed a GHG emissions reduction plan. Some projects in this plan include:

- Reduce fuel consumption with more efficient logistics
- Introduce a programme for efficient driver training
- Establish Ricoh New Zealand’s Sustainability Committee

Offset – 1,986 tonnes CO₂e from PRE³ windpower, 131 carbon credits were not required to offset emissions from electricity purchased from Meridian Energy. The electricity supplied by Meridian Energy is carboNZero certified.

Verified by – AsureQuality Ltd

Threshold of materiality – excluded emissions do not exceed 5% of the total footprint for the organisation and service boundary stated.

Level of assurance – Limited.

Base year – 01/04/2007 to 31/3/2008.

Measurement period – as for base year.

Certification status – carboNZero certified “organisation and energy efficient printers and multifunctional devices”.

Certificate number – 2008047.

Valid until – 30 June 2009.

³ PRE - Projects to Reduce Emissions is a New Zealand government scheme that awards emission units to eligible initiatives that reduce greenhouse gas emissions – see www.mfe.govt.nz