

Summary of carboNZero certification: Kaimira Ventures Limited



Kaimira Ventures Limited meets the requirements of carboNZero^{Cert™} certification having measured and committed to reducing its greenhouse gas emissions and mitigated its remaining unavoidable emissions in respect of its organisation and wine products¹

Kaimira
VENTURES LTD

Introduction² – Kaimira Ventures Limited (Kaimira Ventures) is a private company, and owns a 20 ha vineyard and winery situated in Livingston Road, Brightwater, in the Nelson Region, New Zealand. Kaimira Ventures also manages a 6 ha vineyard at a property in River Terrace Road Brightwater, which is owned by the two Kaimira Ventures shareholders.

Since launching in 1999 the business has steadily grown and now operates a state-of-the-art winery producing the Kaimira Estate and Brightside label range of wines from estate-grown grapes and a small amount grown by a sustainability-accredited local contract grower.

Working with the carboNZero programme and being certified as carbon neutral builds on a commitment to sustainability which has all the winery vineyards and the winery accredited under the Sustainability Winegrowing New Zealand programme.

Boundary – the diagram below shows the organisational structure used for describing Kaimira Ventures' greenhouse gas (GHG) emissions inventory, and what business activities were included in the carboNZero certification. Business activities in light brown were measured but not offset, and business activities were excluded from the certification.

Consolidation approach – operational control

Base year – 01/04/2006 to 31/03/2007

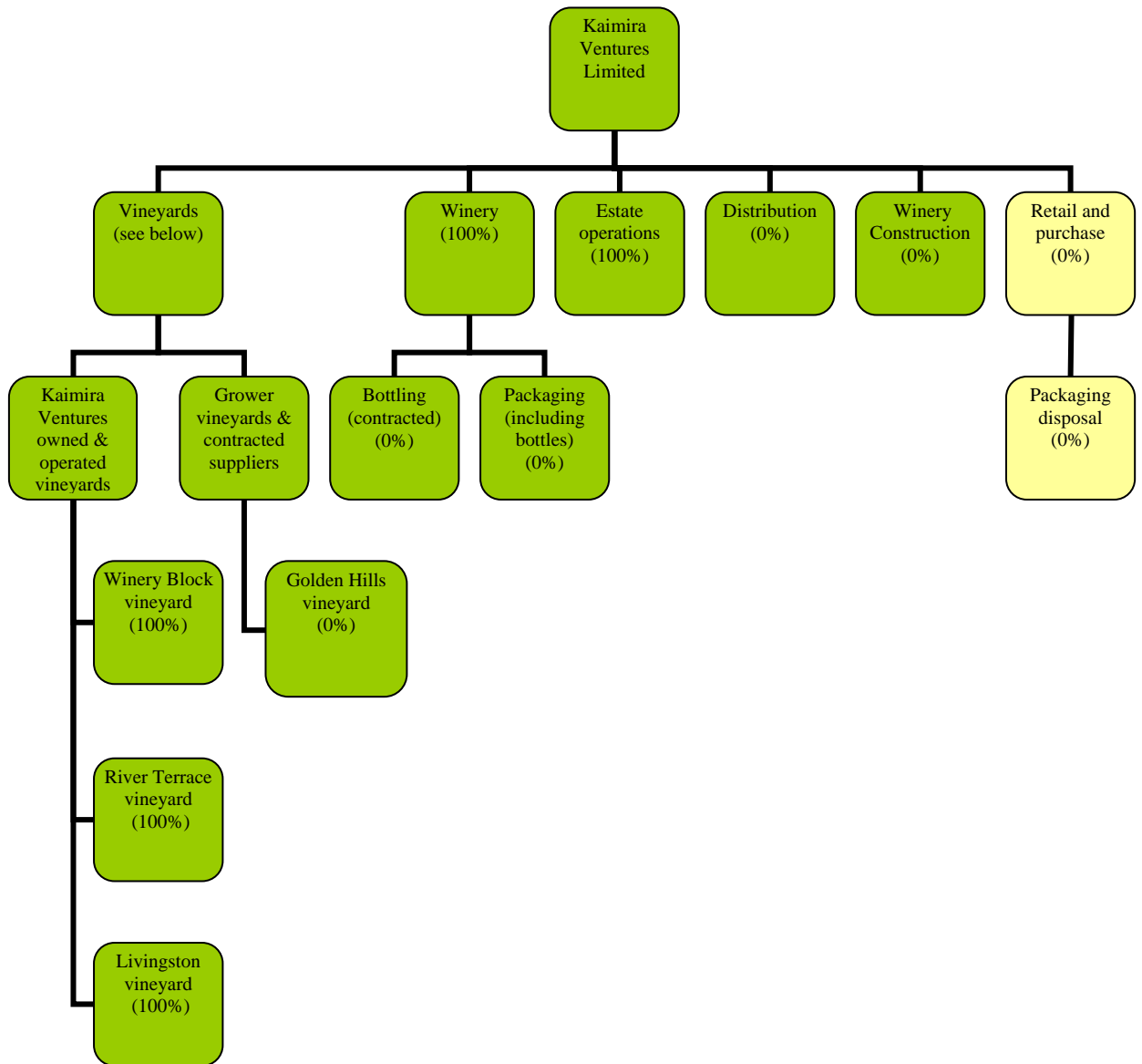
Measurement period – 01/04/2007 to 31/03/2008. This is the measurement period for recertification.

GHG emissions source inclusions – The Kaimira Ventures inventory reports use of diesel, petrol and LPG as Scope 1 operational emissions, electricity as Scope 2 operational emissions, and freight (international shipping, road), domestic and international air travel, and embodied emissions associated with the use of packaging as Scope 3 operational emissions. Emissions associated with the construction of the new winery are reported as Scope 3 one-time (non-operational) emissions.

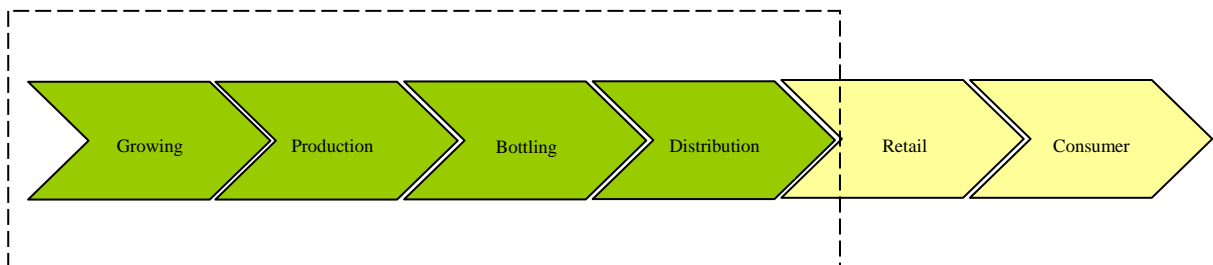
¹ Kaimira Ventures Ltd produces wines under two brands: Kaimira Estate and Brightside.

² **Disclaimer:** This Disclosure Statement is a summary of the verified information considered for certification and the certification decision. It should not be taken to represent the full submission for certification. While every effort has been made to ensure that the information in this Disclosure Statement is accurate and complete, Landcare Research does not, to the maximum extent permitted by law, give any warranty or guarantee relating to the accuracy or reliability of the information.

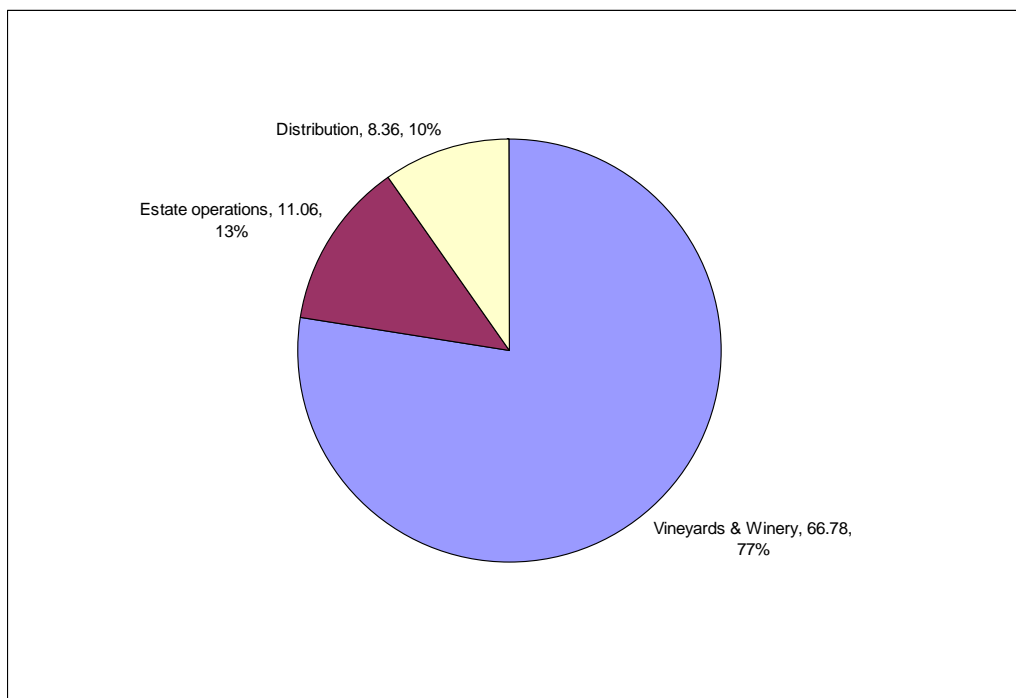
Summary of carbonZero certification: Kaimira Ventures Limited



The diagram below shows what has been included in this inventory for the wine product measurement, in the context of the generic life cycle of wine products. The life cycle stages in yellow were not included in inventory.



GHG emissions profile – Kaimira Ventures' total emissions for this period were 303.92 tonnes carbon dioxide equivalents (CO₂e) comprising 86.20 tonnes of CO₂e operational emissions, and 217.72 tonnes of CO₂e Scope 3 one-time embodied emissions associated with construction of the new winery. The operational emissions of Kaimira Ventures comprised 19.09 tonnes CO₂e Scope 1, 9.22 tonnes CO₂e Scope 2 and 57.89 tonnes CO₂e Scope 3 emissions. The diagram below shows operational GHG emissions for Kaimira Ventures by business activity, expressed in terms of tonnes carbon dioxide equivalents (CO₂e) and the percentage of total emissions.



GHG emissions source exclusions – The following emissions sources were excluded from the inventory:

- emissions associated with use of fertiliser, as they are likely to be of limited significance with respect to the total inventory
- embodied emissions in fertiliser, due to lack of activity data
- fermentation emissions, in line with international best practice
- winery gases, as they are likely to be of limited significance with respect to the total inventory
- embodied emissions of dry goods used in winemaking, due to lack of activity data
- freight (road transport) for transport of goods to the vineyards and winery, due to lack of activity data
- emissions associated with the retail, customer use and waste disposal at the end of life of the product, in line with international best practice
- embodied emissions associated with some materials used in the construction of the new winery, as they are likely to be of limited significance with respect to the total inventory

GHG emissions reduction commitments – Kaimira Ventures has developed a GHG emissions reduction plan. Some projects in this plan include:

Summary of carboNZero certification: Kaimira Ventures Limited



- Reduce emissions associated with the use of electricity by effective monitoring and analysis of usage data and developing protocols for effective use
- Reduce freight related emissions by promoting larger volume trade sales
- Reduce emissions from diesel vehicles by implementing fuel efficiency targets
- Reduce packaging-related emissions by exploring alternative packaging components

GHG emissions reduction report against last year's plan – This is Kaimira Ventures' second emissions inventory report. The boundary for this emissions inventory has been expanded to include Scope 3 one-time emissions associated with the construction of the new winery, which occurred during this reporting period. A comparison of operational emissions shows that there was an overall increase (38%, 23.81 tonnes CO₂e) in operational emissions across all scopes; the most significant increases were in diesel use, contract grower vineyards and electricity, and international air travel. The most significant decreases were seen in the emissions sources associated with packaging (embodied emissions and freight).

The increase in emissions can be at least partly attributed to the development of new vineyard areas, which led to an increase in emissions associated with diesel use, and in addition the electricity use associated with the construction of the new winery was not able to be differentiated from total electricity emissions.

The increase in emissions can also be partly attributed to a significant increase in production; on a "per tonne of grapes crushed" basis, emissions decreased by 12% for comparable emissions sources across both reporting periods.

Offset – 87 tonnes CO₂e. VERs³ from PRE⁴ windpower projects. Serial numbers 324640-324726 have been cancelled on the carboNZero programme register. Emissions associated with construction of the new winery were excluded from the offset required for certification.

Verified by – Verification NZ

Threshold of materiality – excluded emissions do not exceed 5% of the total footprint for organisation and product boundary stated.

Level of assurance – reasonable assurance for operational emissions, limited assurance for emissions associated with construction

Certification status – carboNZero certified "organisation" and wine "products"

Certificate number – 2009034

Valid until – 30 June 2009

Kaimira Ventures Ltd, 97 Livingston Road, Brightwater, Nelson.

Tel: 0064 (0)3 542 3491, Email: info@kaimirawines.com, Web: www.kaimirawines.com

³ VERs are created by eligible projects for emissions reductions achieved up to the end of 2007.

⁴ PRE - Projects to Reduce Emissions is a New Zealand government scheme for projects that are eligible under the Joint Implementation initiative of the Kyoto Protocol – see www.mfe.govt.nz