

Summary of carboNZero certification:



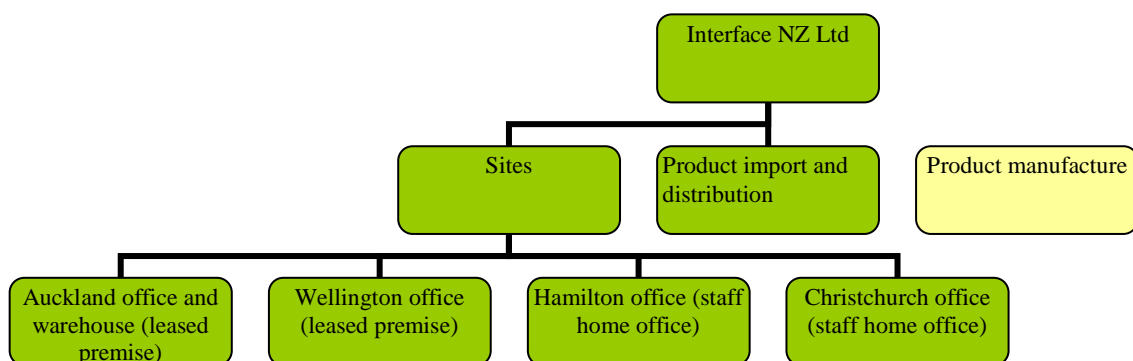
Interface NZ Ltd

Interface NZ Ltd meets the requirements of carboNZero^{Cert™} certification having measured its greenhouse gas emissions in compliance with ISO 14064-1, committed to managing and reducing its emissions and neutralised its remaining unavoidable emissions through the cancellation of an appropriate number of verified carboNZero credits in respect of the operational activities of its organisation.



Introduction¹ – Interface NZ Ltd provides floor covering systems with a focus on carpet tiles, vinyl, and melded fabrics. Interface NZ Ltd’s purpose is to “provide sustainable design-led flooring solutions”. As part of their business, Interface NZ Ltd offer various product support services such as design and visualisation, installation methods, leasing options, and consultancy (e.g. product selection, project management, maintenance and cleaning regimes).

Boundary – the diagram below shows the organisational structure used for describing Interface NZ Ltd’s greenhouse gas (GHG) emissions inventory, and what business units were included in the carboNZero certification. Yellow business units were excluded from the certification.



Consolidation approach – operational control

Base year – 1/4/2007 to 31/3/2008

Measurement period – 1/4/2009 to 31/3/2010

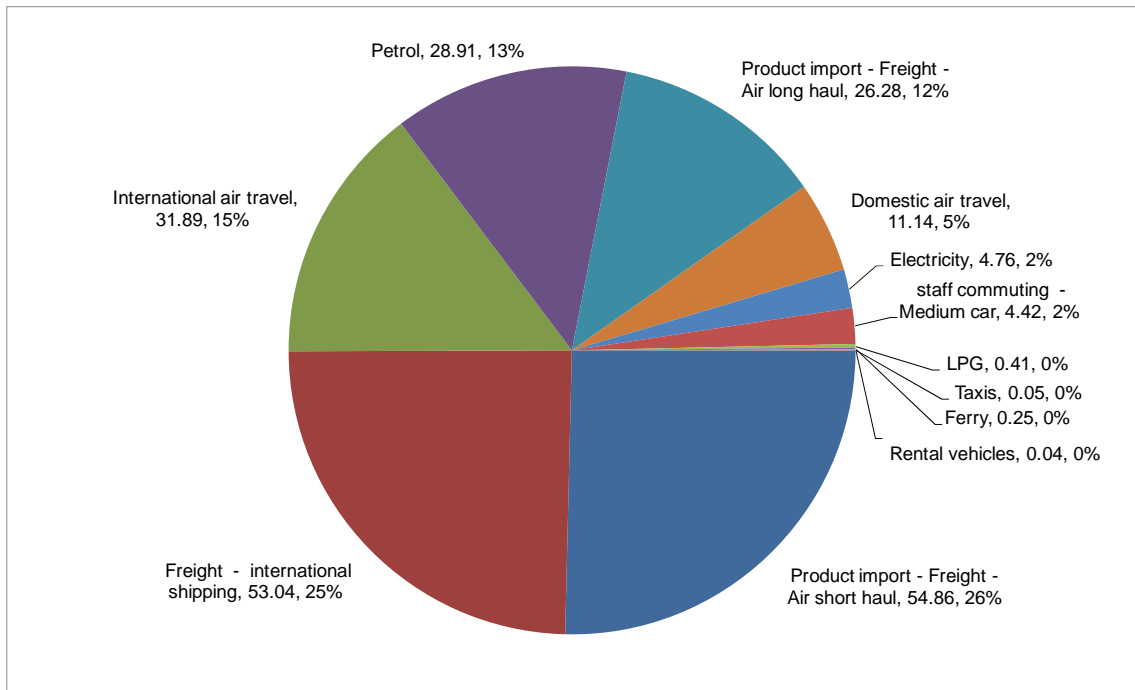
¹ **Disclaimer:** This Disclosure Statement is a summary of the verified information considered for certification and the certification decision. It should not be taken to represent the full submission for certification. While every effort has been made to ensure that the information in this Disclosure Statement is accurate and complete, Landcare Research does not, to the maximum extent permitted by law, give any warranty or guarantee relating to the accuracy or reliability of the information.

Summary of carbonZero certification:



Interface NZ Ltd

GHG emissions source inclusions – the diagram below shows the operational GHG emissions for Interface NZ Ltd by emissions source. Interface NZ Ltd's total emissions for this period were 288 tonnes carbon dioxide equivalents (CO₂e) comprising 29 tonnes CO₂e Scope 1, 3 tonnes CO₂e Scope 2 and 256 tonnes CO₂e Scope 3 emissions.



GHG emissions source exclusions – the following emission sources were excluded from the measurement:

- Waste to landfill
- Temporary product storage at the freight forwarder
- Staff travel accommodation

GHG emissions reduction commitments – Interface NZ Ltd has developed and updated a GHG emissions management and reduction plan. Some projects in this plan include:

- Continue telephone conference calling with regional salespeople.
- Continue Running competitions related to vehicle fuel efficiency.
- Be explicit with customers about the carbon impact of air-freight.
- Increase Coastal and direct to Port Shipping
- Investigate opening a warehouse in the South Island

GHG emissions reduction report against last year's plan –

- All vehicles in the fleet are now Toyota Prius hybrid vehicles
- Utilisation of more coastal shipping as opposed to road freight
- Increased Direct to Port of Project deliveries to reduce freight emissions
- Reduced Airfreight

Summary of carboNZero certification:



Interface NZ Ltd

Offset – 285 tonnes CO₂e VERs² from Te Apiti windpower projects and EBEX21 Forest Regeneration projects. Serial numbers 411033-411175 and 110093-110234 have been cancelled (or equivalent) on the carboNZero programme registry. Carbon credits were not required to offset emissions from purchased electricity for the Auckland and Christchurch site because all electricity is purchased from Meridian Energy.

Verified by – AsureQuality Ltd.

Threshold of materiality – excluded emissions do not exceed 5% of the total footprint for organisation and product boundary stated.

Level of assurance – reasonable assurance

Certification status – carboNZero certified “organisation” including freight associated with importation and distribution of products.

Certificate number – 2010085J

Valid until – 30/06/2011

Interface NZ Ltd, 52B Arrenway Drive, Rosedale, Auckland 0632, New Zealand. Tel: +64 (0)9 441 9850. Email: enquiries@interfacenz.com Web: www.interfacenz.com

² VERs are created by eligible projects for emissions reductions achieved up to the end of 2007.