

## Summary of carboNZero certification:

### Transport Fleet Management Ltd (Fleetwise)



*Transport Fleet Management Ltd (Fleetwise) meets the requirements of carboNZero<sup>Cert</sup>™ certification having measured its greenhouse gas emissions in compliance with ISO 14064-1, committed to managing and reducing its emissions and neutralised its remaining emissions in respect of the operational activities of its organisation.*



#### Introduction<sup>1</sup> –

Fleetwise provides a total fleet management solution. Their services include:

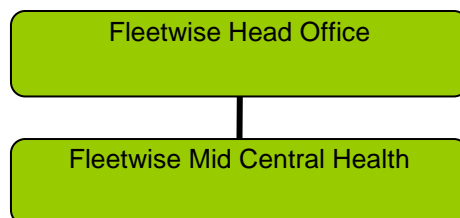
- Analysis of a company's vehicle requirements.
- Supply of fleet vehicles - lease or purchase
- Fleet management and administration
- Monthly management reporting
- Traffic infringement and insurance claims administration
- Fleet performance benchmarking
- Settlement of all transport related accounts
- Web based real time on-line reporting.

Fleetwise provides fleet management and administration services for light and heavy vehicle fleets and a wide range of plant assets.

As part of an ongoing contract Fleetwise also has five staff based at Mid Central Health. One of these staff members is office-based and four staff operate vehicles for Mid Central Health.

Fleetwise is wholly committed to the principles of sustainability. They believe that the adoption of environmentally responsible business practices for themselves, and on behalf of their clients, makes a positive contribution towards preserving and improving the environment for future generations. It is simply good business.

**Boundary** – the diagram below shows the organisational structure used for describing Fleetwise's greenhouse gas (GHG) emissions inventory, and what business units were included in the carboNZero certification.



<sup>1</sup> **Disclaimer:** This Disclosure Statement is a summary of the verified information considered for certification and the certification decision. It should not be taken to represent the full submission for certification. While every effort has been made to ensure that the information in this Disclosure Statement is accurate and complete, Landcare Research does not, to the maximum extent permitted by law, give any warranty or guarantee relating to the accuracy or reliability of the information.

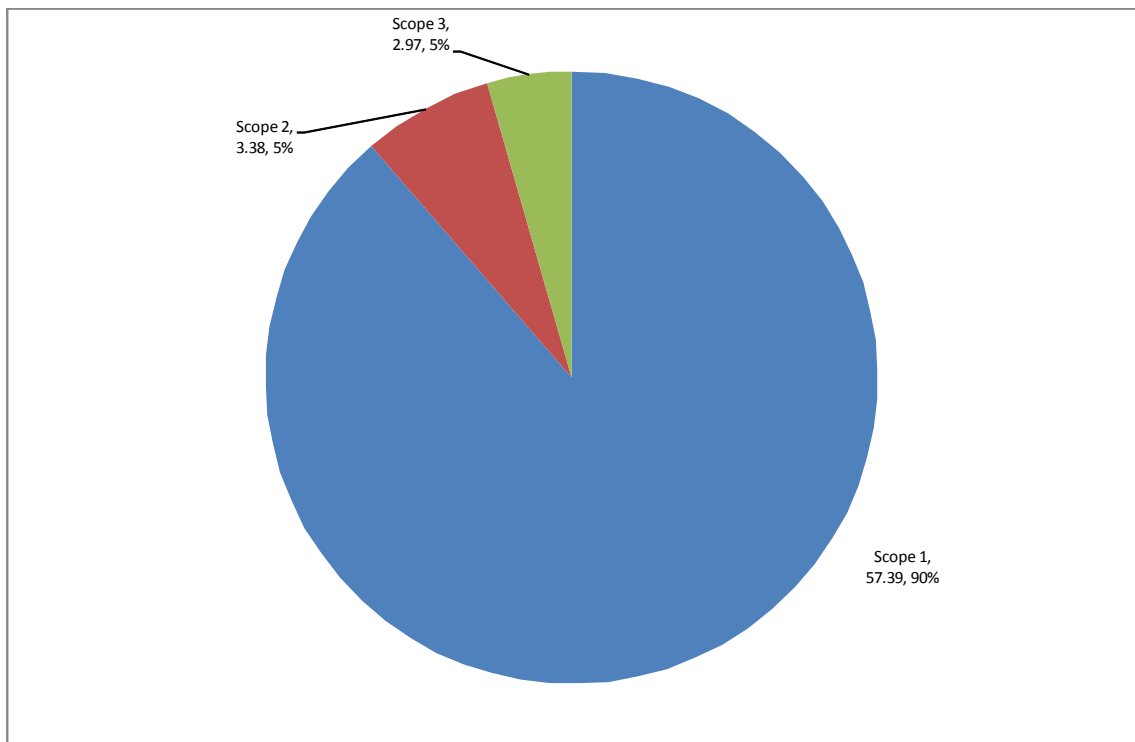
## Summary of carboNZero certification:

Transport Fleet Management Ltd  
(Fleetwise)



### Consolidation approach – Operational control

**GHG emissions source inclusions** – the diagram below shows the operational GHG emissions for Fleetwise by emissions source. Fleetwise's total emissions for this period were 64.83 tonnes carbon dioxide equivalents (CO<sub>2</sub>e) comprising operational emissions.



**GHG emissions source exclusions** – The following emission sources were excluded from the inventory

- Freight, (estimate indicate that this is less then 1% of the inventory)
- Waste (Due to the small number of staff it is estimated that GHG emissions from waste would be insignificant)
- Electricity at Mid Central Health office (only one staff member is based at this office and they have no control over the electricity usage)

**GHG emissions reduction commitments** – Fleetwise has developed a GHG emissions reduction plan. Some projects in this plan include:

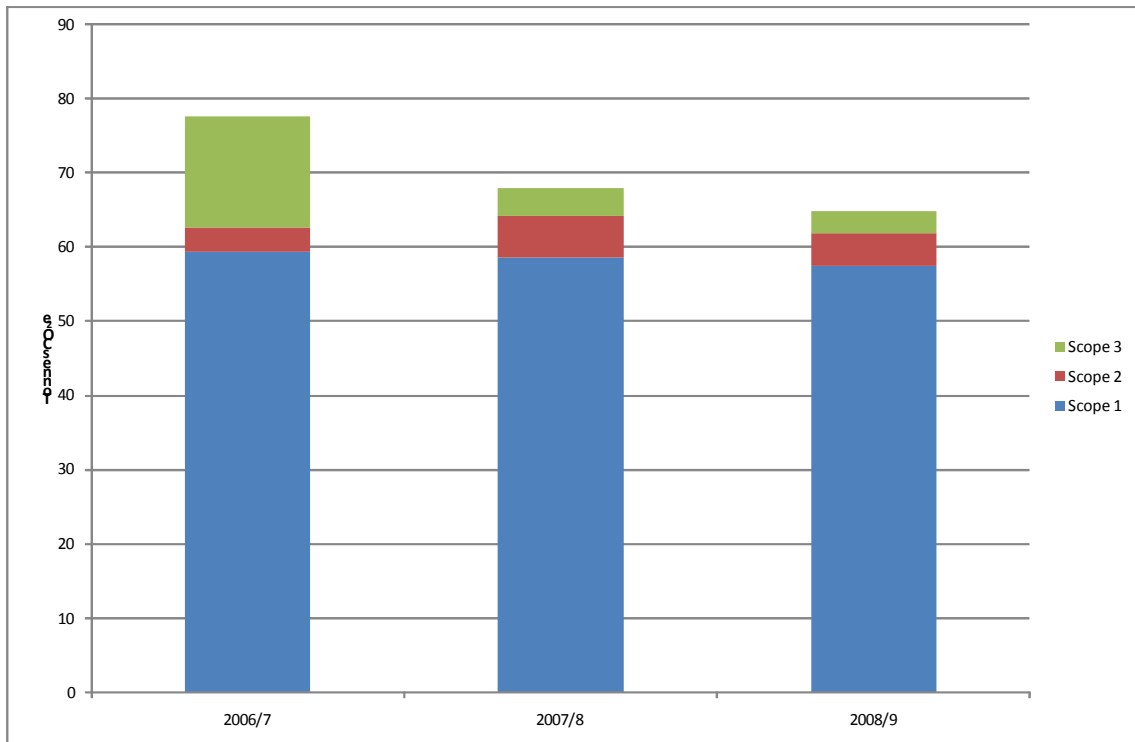
- Reduce intensity based emissions from Mid-Central Health vehicle fleet
- Reduce office electricity emissions
- Reducing amount of waste to landfill
- Give preference to purchase of low emissions intensity and/or carboNZero certified products and services

## Summary of carboNZero certification:

Transport Fleet Management Ltd  
(Fleetwise)



**GHG emissions reduction report against last year's plan** – Fleetwise achieved an overall reduction of 12.83 tCO<sub>2</sub>e from the base year inventory and 3.11 tCO<sub>2</sub>e from last year's inventory.



**Offset** – 64 tonnes CO<sub>2</sub>e. Gold Standard VERs<sup>2</sup> from Meridian Energy PRE windpower<sup>3</sup> project. Serial numbers 407504 – 407567 cancelled in the carboNZero programme register. Carbon credits were not required to offset 1.46 tonnes CO<sub>2</sub>e emissions from purchased electricity from Meridian Energy.

**Verified by** – Green Fox Consulting Ltd

**Level of assurance** – Reasonable assurance

**Threshold of materiality** – excluded emissions do not exceed 5% of the total footprint for organisation and product boundary stated.

**Base year** – 01/10/2006 to 30/09/2007

<sup>2</sup> VERs are created by eligible projects for emissions reductions achieved up to the end of 2007.

<sup>3</sup> PRE - Projects to Reduce Emissions is a New Zealand government scheme for projects that are eligible under the Joint Implementation initiative of the Kyoto Protocol – see [www.mfe.govt.nz](http://www.mfe.govt.nz).

## Summary of carboNZero certification:

Transport Fleet Management Ltd  
(Fleetwise)



**Measurement period** – 01/10/2008 to 30/09/2009

**Certification status** – carboNZero certified “organisation”.

**Certificate number** – 2010072J

**Certification valid until** – 31 December 2010.

Fleetwise, Bodell Place, PO Box 4046, Palmerston North Central 4440, New Zealand. Tel: +64 (0)6 356 1084, Fax: +64(0)6 356 1473, Email: [abby@fleetwise.co.nz](mailto:abby@fleetwise.co.nz) , Web: [www.fleetwise.co.nz](http://www.fleetwise.co.nz)