

## Transport Fleet Management Ltd (Fleetwise)

*Fleetwise meets the requirements of the carboNZeroCert™ certification having measured and reduced its greenhouse gas emissions and mitigated its remaining unavoidable emissions in respect of its organisation.*



### Introduction<sup>1</sup> –

Fleetwise provides a total fleet management solution. Their services include:

- Analysis of a company's vehicle requirements.
- Supply of fleet vehicles - lease or purchase
- Fleet management and administration
- Monthly management reporting
- Traffic infringement and insurance claims administration
- Fleet performance benchmarking
- Settlement of all transport related accounts
- Web based real time on-line reporting.

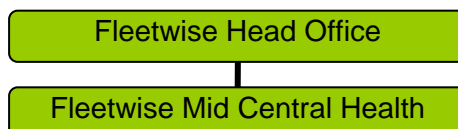
Fleetwise provide fleet management and administration services for light and heavy vehicle fleets and a wide range of plant assets. Fleetwise is based in Palmerston North.

As part of an ongoing contract Fleetwise also has five staff based at Mid Central Health. One of these staff members is office-based and four staff operate vehicles for Mid Central Health.

As part of attaining carboNZero certification, Fleetwise measured all activities causing greenhouse gas (GHG) emissions and implemented reduction programmes to address the largest sources of emissions.

Fleetwise is wholly committed to the principles of sustainability. They believe that the adoption of environmentally responsible business practices for themselves, and on behalf of their clients, makes a positive contribution towards preserving and improving the environment for future generations. It is simply good business.

**Boundary** – the diagram below shows the organisational structure used for describing Fleetwise's greenhouse gas (GHG) emissions inventory, and what business units were included in the carboNZero certification.



<sup>1</sup> **Disclaimer:** This Disclosure Statement is a summary of the verified information considered for certification and the certification decision. It should not be taken to represent the full submission for certification. While every effort has been made to ensure that the information in this Disclosure Statement is accurate and complete, Landcare Research does not, to the maximum extent permitted by law, give any warranty or guarantee relating to the accuracy or reliability of the information.

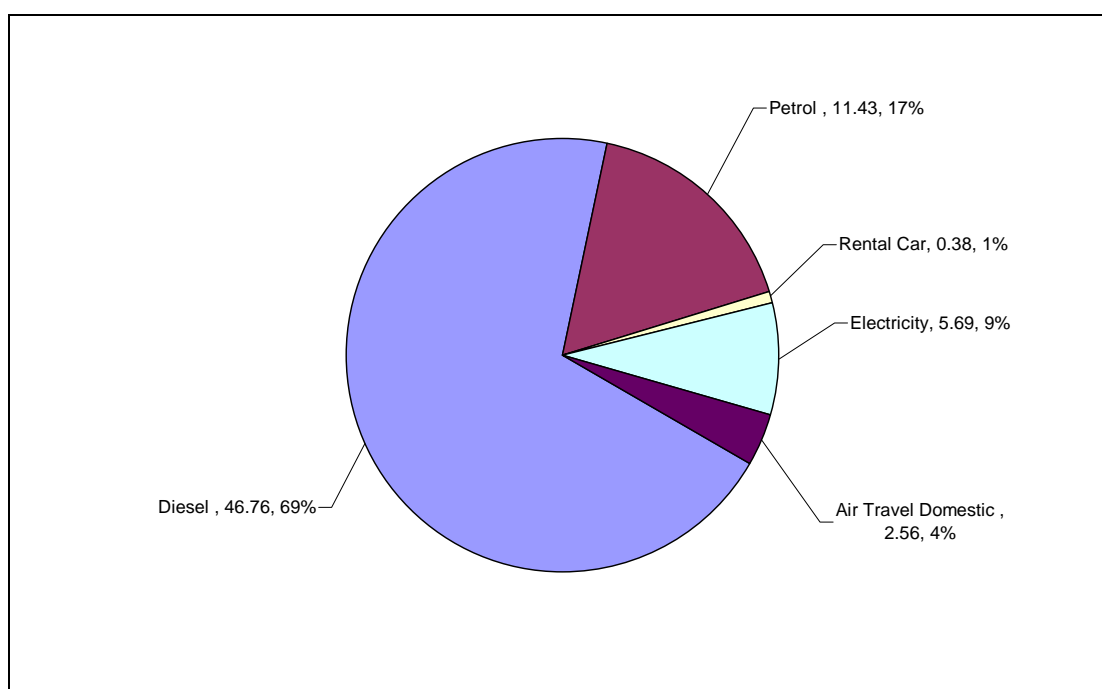
## Transport Fleet Management Ltd (Fleetwise)

**Consolidation approach** – Operational control

**Base year** – 01/10/2006 to 30/09/2007

**Measurement period** – 01/10/2007 to 30/09/2008

**GHG emissions source inclusions** – the diagram below shows the operational GHG emissions for Fleetwise by emissions source. Fleetwise's total emissions for this period were 67.92 tonnes carbon dioxide equivalents (CO<sub>2</sub>e) comprising operational emissions.



**GHG emissions source exclusions** – The following emission sources were excluded from the inventory

- Freight, taxi use (estimates indicated these emissions sources would be less than 1% of the inventory)
- Waste (Due to the small number of staff it is estimated that GHG emissions from waste would be insignificant)
- Electricity at Mid Central Health office (only one staff member is based at this office and they have no control over the electricity usage)

**GHG emissions reduction commitments** – Fleetwise has developed a GHG emissions reduction plan. Some projects in this plan include:

- Reducing petrol vehicle fleet (by one vehicle) and to replace other vehicles with fuel efficient models.
- Introducing driver training and route management for courier van drivers.
- Reducing national travel and rental car usage by optimising time on trips away.
- Investigate more accurate electricity measurement in offices

# Summary of carboNZero certification: carboNZero

## Transport Fleet Management Ltd (Fleetwise)

**GHG emissions reduction report against last year's plan** – Fleetwise achieved an overall reduction of 9.67 tCO<sub>2</sub>e from last years inventory. This is mainly due to a reduction in international air travel and petrol use.

**Offset** – 68 tonnes CO<sub>2</sub>e. VERs<sup>2</sup> from PRE<sup>3</sup> Tararua II windpower projects. Serial numbers cancelled from the carboNZero programme registry.

**Verified by** – Telarc SAI.

**Threshold of materiality** – excluded emissions do not exceed 5% of the total footprint for organisation boundary stated.

**Level of assurance** – Reasonable assurance

**Certification status** – carboNZero certified “organisation”.

**Certificate number** – 2009024

**Certification valid until** – 31 December 2009.

Transport Management Services Ltd (Fleetwise), Level 10 FMG Building, 55 The Square, Palmerston North, Tel: 06 356 1084, Email; [abby@fleetwise.co.nz](mailto:abby@fleetwise.co.nz), Web; [www.fleetwise.co.nz](http://www.fleetwise.co.nz)

---

<sup>2</sup> VERs are created by eligible projects for emissions reductions achieved up to the end of 2007.

<sup>3</sup> PRE - Projects to Reduce Emissions is a New Zealand government scheme for projects that are eligible under the Joint Implementation initiative of the Kyoto Protocol – see [www.mfe.govt.nz](http://www.mfe.govt.nz)