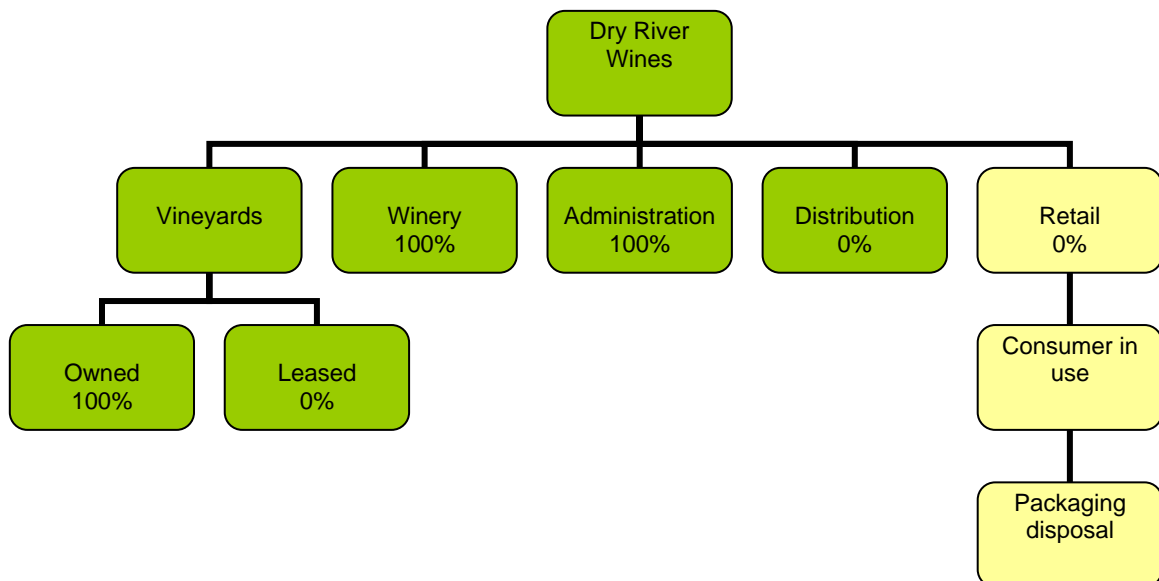


## DRY RIVER

**Introduction** – Dry River vineyard was established in 1979 on a very dry and free-draining area now called the 'Martinborough Terrace' near Martinborough, which is approximately 100 km northeast of Wellington. Dry River Wines produces individual, high quality regional wines (Chardonnay, Gewurtz, Pinot Gris, Pinot Noir, Riesling, Syrah, Sauvignon and Viognier). About 2,000 cases are produced per annum and mainly sold in New Zealand by mail order. About 20% of the product is exported to Australia, the USA and the UK.

Dry River Wines own 11.6 ha of vineyard in three separate blocks and lease another 1 ha block. Dry River Wines have nine staff responsible for the vineyard, winery and marketing, and use contractors for hand harvesting of grapes.

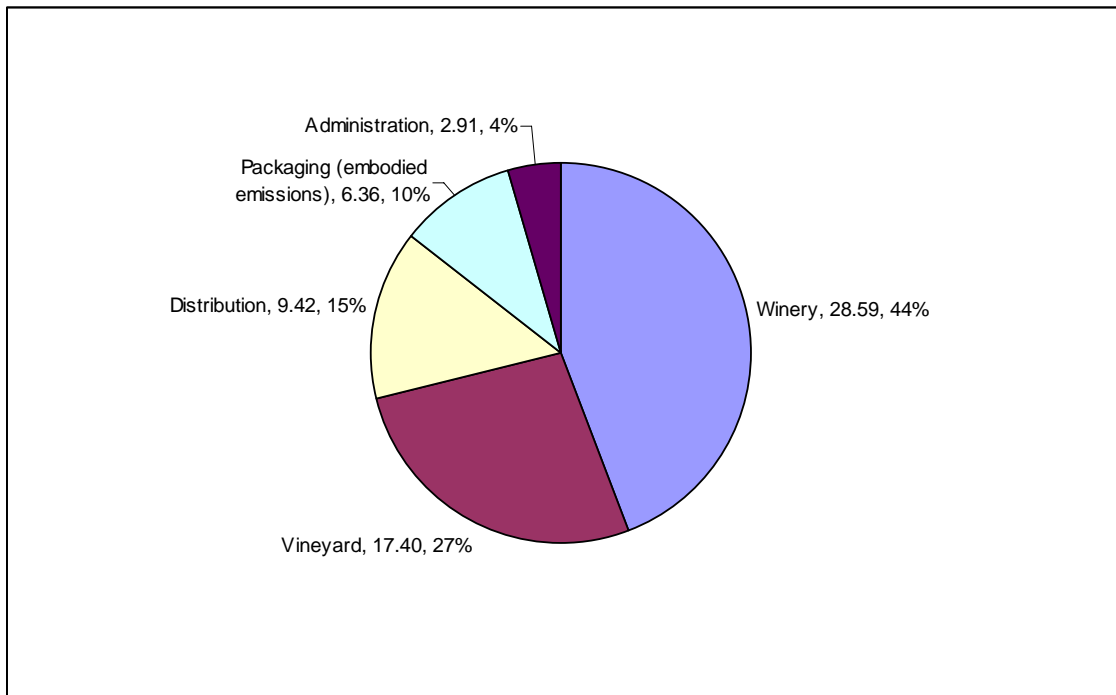
**Boundary** – the diagram below shows the organisational structure used for describing Dry River Wines greenhouse gas (GHG) emissions inventory, and what business activities were included in the carboNZero certification. Yellow business units were excluded from the certification. The percentage figures indicate the level of ownership by Dry River Wines.



**Consolidation approach** – operational control.

**GHG emissions profile** – the diagram below shows the operational GHG emissions for Dry River Wines by emissions source. Dry River Wines total emissions for this period were 60 tonnes carbon dioxide equivalents (CO<sub>2</sub>e). All of these emissions were operational emissions.

## Summary of carboNZero certification: Dry River Wines Limited



**GHG emissions reduction commitments** – Dry River Wines has developed a GHG emissions reduction plan. Some projects in this plan include:

- Seasonal overview of required sprays to limit tractor use
- Only using frost pots for frost protection when critical
- Reducing the start temperatures on wind machines
- New buildings to incorporate more effective heating and cooling equipment
- Minimize the amount of air travel within the company

**Offset** – 60 tonnes CO<sub>2</sub>e from PRE<sup>1</sup> windpower credits.

**Verified by** – AsureQuality.

**Base year** – 01/07/2006 to 30/6/2007.

**Certification status** – carboNZero certified in terms of its “organisation” and “wine products”.

**Valid until** – 30 September 2008.

<sup>1</sup> PRE - Projects to Reduce Emissions is a New Zealand government scheme that awards emission units to eligible initiatives that reduce greenhouse gas emissions – see [www.mfe.govt.nz](http://www.mfe.govt.nz)