

Summary of CEMARS® certification:



City Care Limited

Year 2 of 3 Year Certificate Period

City Care Limited meets the requirements of CEMARS® certification having measured its greenhouse gas emissions in compliance with ISO 14064-1:2006 committed to managing and reducing its emissions in respect of the operational activities of its organisation including: Branches, and their sub depots, at Auckland, Tauranga, New Plymouth, Wellington and Timaru; Christchurch Divisions, and their sub-depots, for Parks, Facilities Management, Roothing, Water and Wastewater; and their National Office in Christchurch.



Introduction¹ – City Care provides construction, maintenance and management services across New Zealand’s infrastructure and amenity assets. It operates across four distinct operating segments of the national contracting market. The segments are parks, facilities management, roading, and water and wastewater. It supplies services primarily to local government clients. City Care employs around 1000 people throughout New Zealand. It has branches and depots in eight cities with supporting facilities in smaller towns. Most of the staff work away from the company base on the client’s sites. City Care is a Council Controlled Trading Organisation operating under the Local Government Act 2002. Its sole shareholder is Christchurch City Holdings Ltd, which is a wholly-owned subsidiary of the Christchurch City Council. The 2010/11 year has been strongly impacted by the earthquakes in Christchurch. As the underground services maintenance contractor to the Christchurch City Council, City Care has had a large role in assisting with the emergency response and repair to the earthquake and aftershocks. This resulted in a large and sudden deployment of subcontractors from New Zealand and Australia. The emissions for subcontractors reflect this. The increase in work will also affect the next reporting year. As the work moves from response to rebuild the impact will be incorporated into more normal operating patterns.

Boundary – Figure 1 below shows the organisational structure used for describing the organisation’s greenhouse gas (GHG) emissions inventory, and what business units were included in the inventory in the context of the entire organisational profile. The parts of the structure (business units) in blue have been identified as being within this emissions inventory. Business units excluded from the inventory are shown in green.

¹**Disclaimer:** This Disclosure Statement is a summary of the verified information considered for certification and the certification decision. It should not be taken to represent the full submission for certification. While every effort has been made to ensure that the information in this Disclosure Statement is accurate and complete, Landcare Research does not, to the maximum extent permitted by law, give any warranty or guarantee relating to the accuracy or reliability of the information.

Summary of CEMARS® certification:



City Care Limited

Year 2 of 3 Year Certificate Period

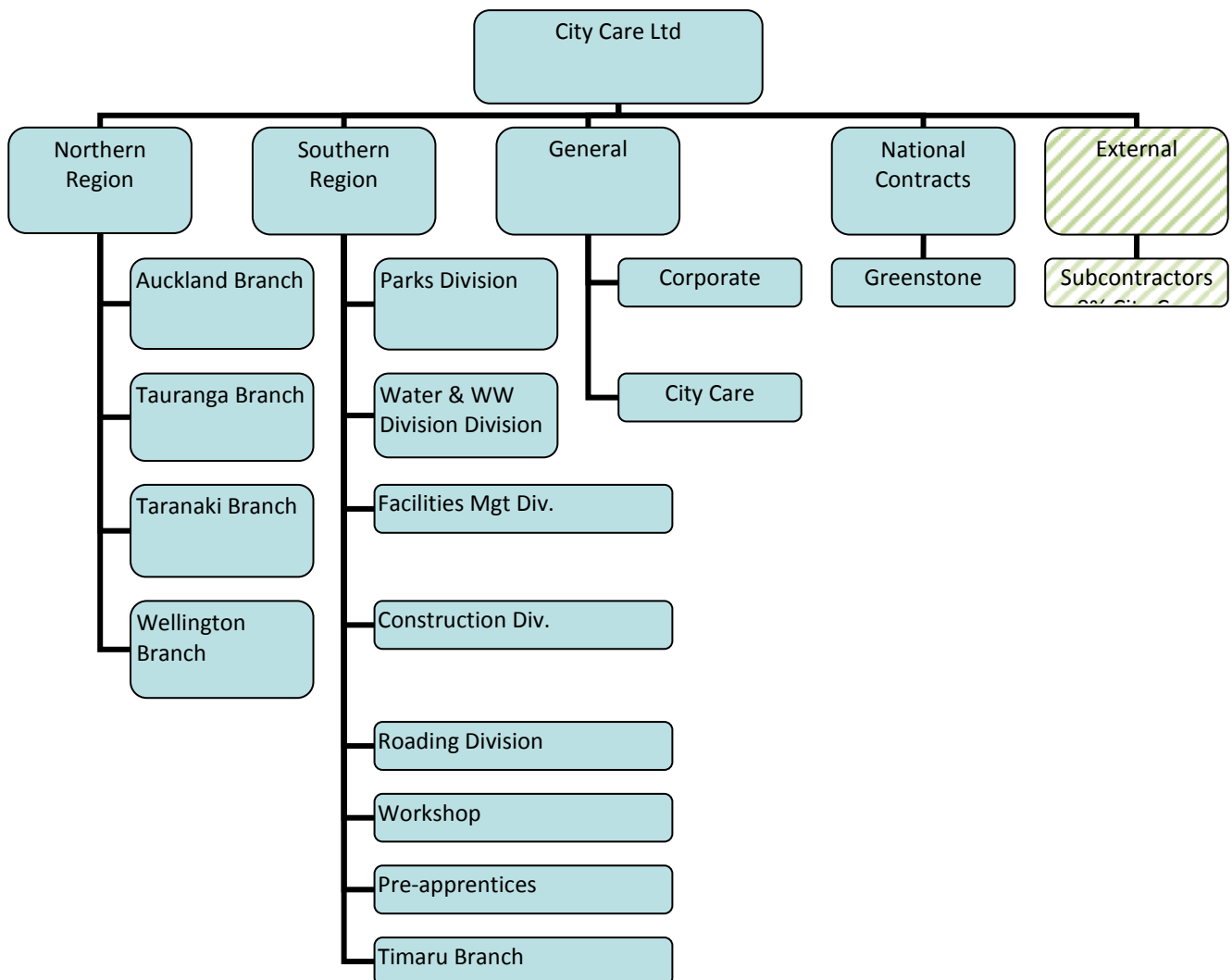


Figure 1: Organisational structure showing business units included and excluded.

Consolidation approach – The operational control consolidation approach has been used to account for operational emissions with reference to the methodology described in the GHG Protocol and ISO 14064-1 standards.

Base year – 01/07/2009 to 30/06/2010

Measurement period – 01/07/2010 to 30/06/2011

Emissions source inclusions – The operational GHG emissions for the organisation by emissions source are shown in Figure 2 below.

Summary of CEMARS® certification:



City Care Limited

Year 2 of 3 Year Certificate Period

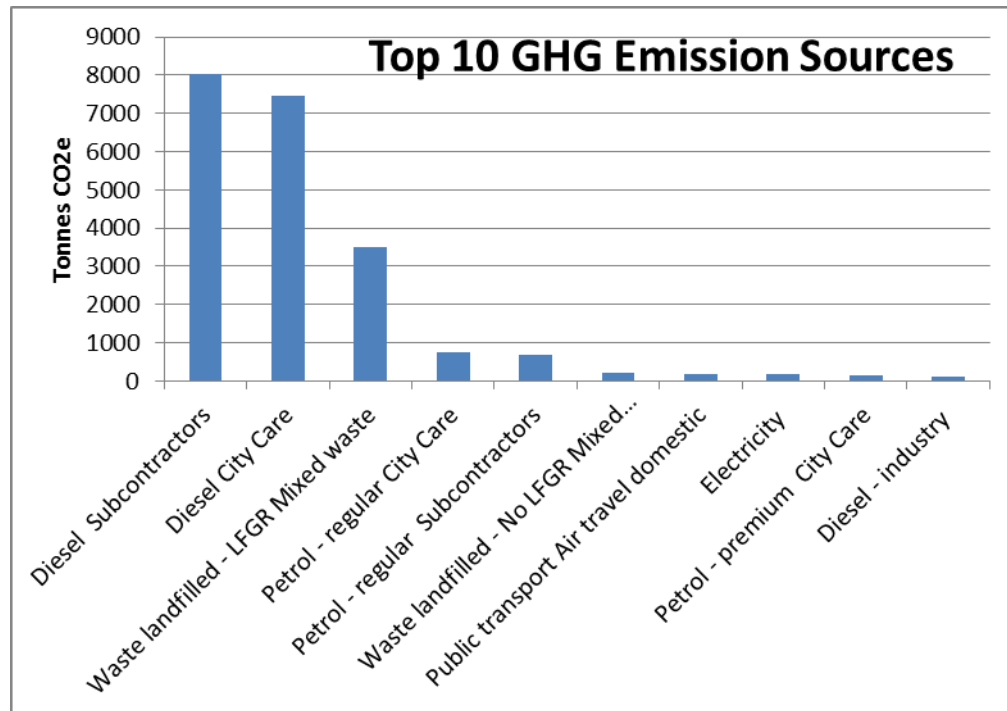


Figure 2: GHG emissions by emissions source.

Emissions as tonnes of carbon dioxide equivalents (tCO₂e) for this period were:

Scope 1: 8,621.28 tCO₂e

Scope 2: 192.18 tCO₂e

Scope 3: 12,672.25 tCO₂e

Total: 21,485.71 tCO₂e

Emissions source exclusions – The following emissions sources were excluded from the inventory for this measurement period:

- The embodied emissions associated with material used and/or disposed of, and fertilisers applied were excluded as these are considered to be clients' responsibility, therefore considered outside of scope.

Emissions reduction commitments – A GHG emissions management plan and reduction targets have been developed.

- Reduce Scope 1 transport fuel emissions by 10%
- Reduce industry diesel emissions from asphalt plant by 20%
- Minimise waste

Emissions reductions summary against last year's plan –

Base year GHG emissions = 12,355.38 tCO₂e

Summary of CEMARS[®] certification:



City Care Limited

Year 2 of 3 Year Certificate Period

GHG emissions calculated for this reporting period = 12,757.07 tCO₂e

Difference in GHG emissions = +401.69

Verified by – Verification New Zealand

Data quality score – Fair. This classification is lower than expected due to the impact of the estimated Scope 3 subcontractor emissions on the data quality. Excluding the subcontract emissions, data quality is assessed as being 'Good'.

Threshold of materiality – Excluded emissions do not exceed 5% of the total footprint for organisation stated.

Level of assurance – Reasonable for Scope 1 and 2 and non-contractor Scope 3 emissions; Limited for contractor emissions

Certification status – CEMARS certified organisation.

Certificate number – 2010111J-2

Valid until – 31 October 2013

City Care Limited, Level 1, 226 Antigua St, Christchurch, 8011, New Zealand.
Tel: +64 3 941 7000. Email: citycare@citycare.co.nz, Web: www.citycare.co.nz