

Summary of carboNZero certification: Christchurch International Airport Limited



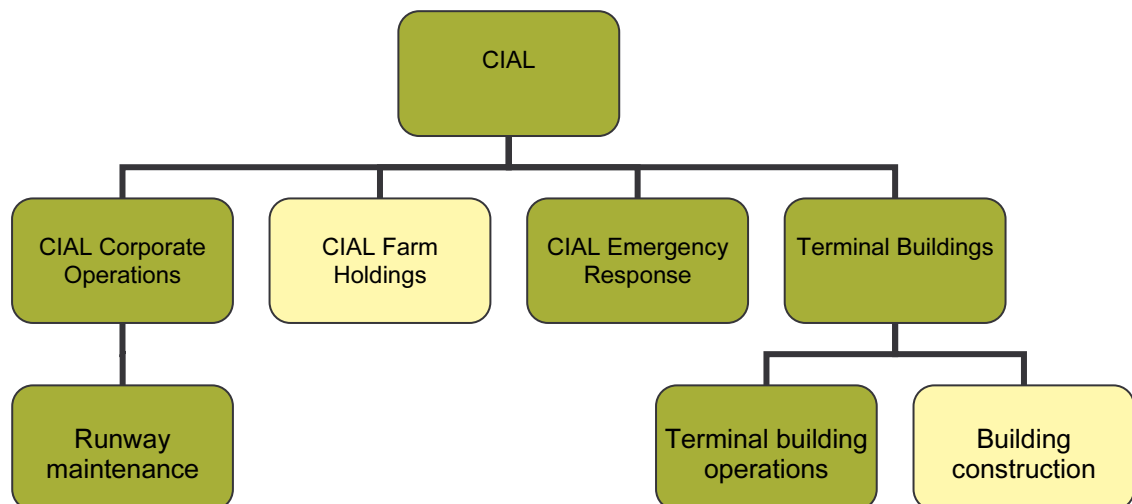
Introduction – Christchurch International Airport Limited (CIAL) owns and operates New Zealand’s key southern gateway and is a vital hub for the South Island’s tourism and freighting industries. CIAL’s core business is the efficient and safe operation of Christchurch International Airport.

CIAL was established as a limited liability company in 1988 and ownership is now shared 75% by Christchurch City Holdings Limited and 25% by the New Zealand Government.

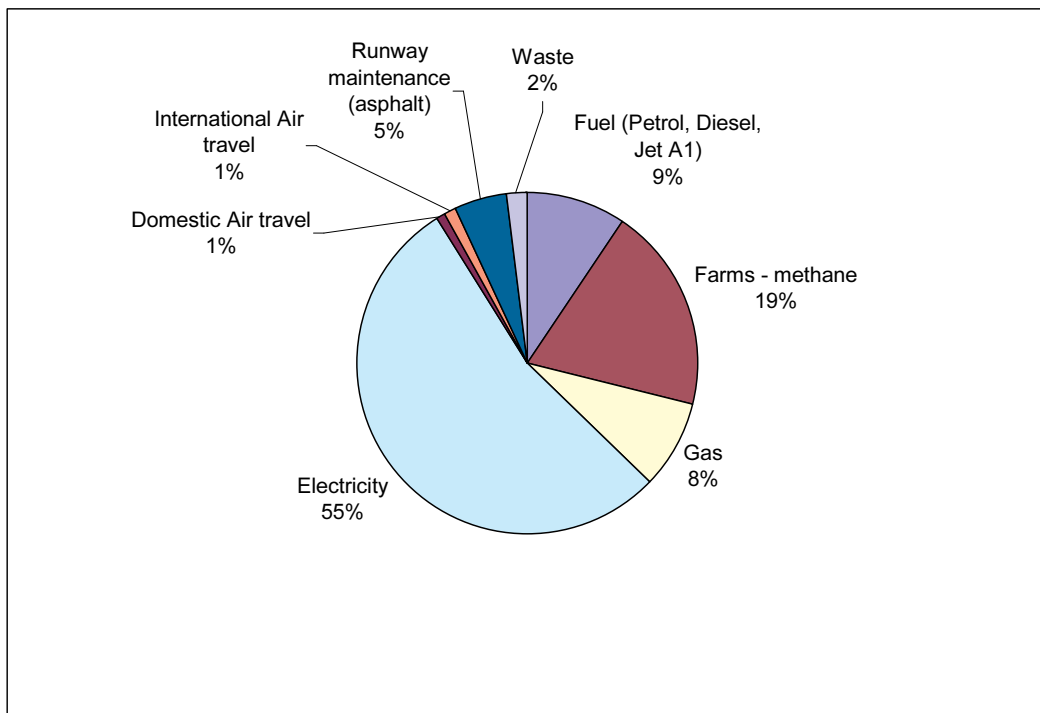
Programmes have progressively been implemented to ensure best practice environmental management at the airport. Examples include an environmental audit programme for CIAL and airport businesses and the undertaking of comprehensive energy audits of terminal operations.

CIAL believes it is essential that positive steps are taken to address the climate change concerns of international travellers visiting New Zealand, while also taking ownership as a responsible corporate citizen.

Boundary – the diagram below shows the organisational structure used for describing CIAL’s greenhouse gas (GHG) emissions inventory, and what business units were included in the carboNZero certification. Yellow business units were excluded from the certification.



GHG emissions profile – the diagram below shows the operational GHG emissions for CIAL by emissions source . CIAL’s total emissions for this period were 5236 tonnes carbon dioxide equivalents (CO₂e) comprising 3638 tonnes CO₂e operational emissions and 1598 tonnes CO₂e non-operational emissions.



GHG emissions reduction commitments – CIAL has developed a GHG emissions reduction plan. Some projects in this plan include:

- CIAL vehicle fleet – adapting vehicle replacement policy to include fuel efficiency considerations.
- Airfield operations – recycle 10% of asphalt during runway maintenance programme.
- Terminal building – implement monitoring and targeting programme to identify and address energy inefficiencies within the terminal building.

Offset – 969 tonnes CO₂e. VERs¹ from EBEX21² and PRE³ landfill gas and windpower projects. Carbon credits were not required to offset emissions from purchased electricity because all electricity is purchased from Meridian Energy. Emissions from Farm Holdings and one-time emissions from new building construction were excluded from the offset required for certification.

Verified by – PricewaterhouseCoopers.

Base Year – 01/01/2006 to 31/12/2006.

Certification status – carboNZero certified “organisation” covering terminal buildings (operations), corporate operations, emergency response, airfield and infrastructure maintenance.

¹ VERs are created by eligible projects for emissions reductions achieved up to the end of 2007.

² EBEX21 – Emissions Biodiversity Exchange in the 21st Century project creates carbon credits through the regeneration of native forest on private land – see www.ebex21.co.nz

³ PRE - Projects to Reduce Emissions is a New Zealand government scheme for projects that are eligible under the Joint Implementation initiative of the Kyoto Protocol – see www.mfe.govt.nz

Summary of carboNZero certification:
Christchurch International Airport Limited



Valid until – 30 September 2008.