

Christchurch International Airport Limited

Christchurch International Airport Limited meets the requirements of carboNZero^{Cert™} certification having measured its greenhouse gas emissions in compliance with ISO 14064-1, committed to managing and reducing its emissions, and neutralised the remaining unavoidable emissions in respect of the operational activities of its organisation.



Introduction¹ – Christchurch International Airport Limited owns and operates New Zealand’s key southern air travel gateway and is a vital hub for the South Island’s tourism and freighting industries. Christchurch International Airport Limited’s core business is the efficient and safe operation of Christchurch International Airport.

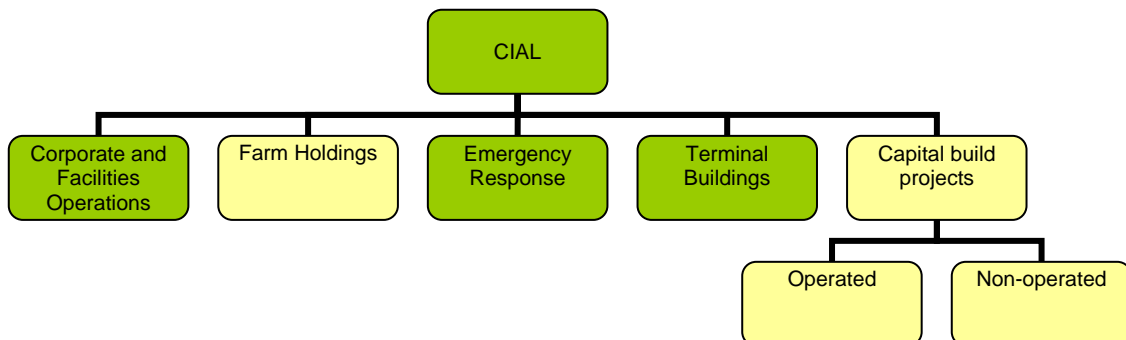
Christchurch International Airport Limited was established as a limited liability company in 1988 and ownership is now shared 75% by Christchurch City Holdings Limited and 25% by the New Zealand Government. The airport currently employs 180 full-time equivalent staff in the areas of administration, airport fire services, customer services, management, property, facilities services and travel and information services.

Programmes have progressively been implemented to ensure best practice environmental management at the airport. Examples include an environmental audit programme for Christchurch International Airport Limited and airport businesses and the undertaking of comprehensive energy audits of terminal operations. Programmes are also in place to ensure best practice initiatives in the areas of storm water discharge, solid waste disposal, energy conservation, air, and water quality.

Boundary – the diagram below shows the organisational structure used for describing Christchurch International Airport Ltd’s greenhouse gas (GHG) emissions inventory, and what business units were included in the carboNZero certification. Yellow business units were measured but excluded from the certification.

¹ **Disclaimer:** This Disclosure Statement is a summary of the verified information considered for certification and the certification decision. It should not be taken to represent the full submission for certification. While every effort has been made to ensure that the information in this Disclosure Statement is accurate and complete, Landcare Research does not, to the maximum extent permitted by law, give any warranty or guarantee relating to the accuracy or reliability of the information.

Christchurch International Airport Limited

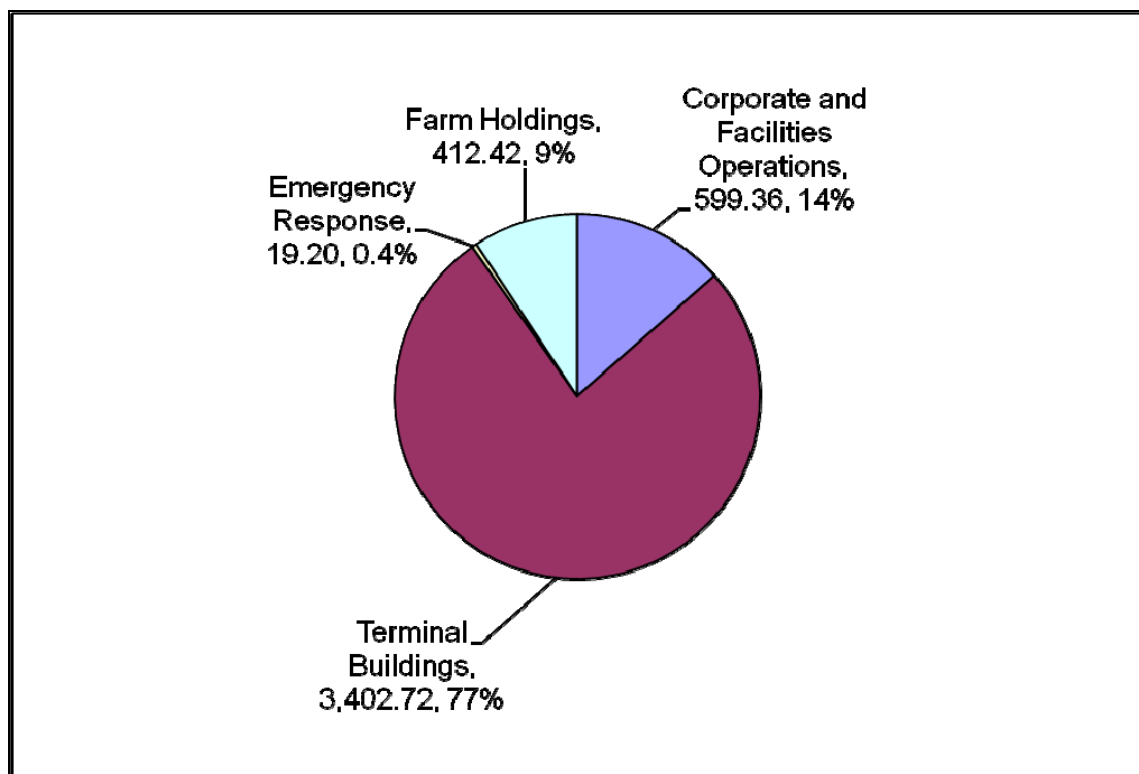


Consolidation approach – operational control

Base year – 01/01/2006 to 31/12/2006

Measurement period – 01/07/2008 to 30/06/2009

GHG emissions source inclusions – the diagram below shows the operational GHG emissions for Christchurch International Airport Ltd by emissions source. Christchurch International Airport Ltd’s total emissions for this period were 4434 tonnes carbon dioxide equivalents (CO₂e) comprising 2097 tonnes CO₂e Scope 1, 1937 tonnes CO₂e Scope 2 and 400 tonnes CO₂e Scope 3 emissions. Christchurch International Airport Ltd’s emissions consist of 4434 tonnes CO₂e operational emissions and 0 tonnes CO₂e non-operational emissions.



Christchurch International Airport Limited

GHG emissions source exclusions – The following emissions sources were excluded from the emissions inventory:

- Staff travel accommodation
- Rental vehicles
- Airline quarantined waste
- Couriers
- Tenant electricity
- Aircraft Movements

GHG emissions reduction commitments – Christchurch International Airport Ltd has developed a GHG emissions reduction plan for the 2009/2010 year. Some projects in this plan include:

- Implement the findings of the Building Management Services audit to achieve 5% energy saving for the operation of the Terminal.
- Increase diversion of waste from landfill from terminal operations from 15% to 30% through- introduction of recycling bins throughout public areas of terminal, running and education programme for tenants, public and cleaners on recycling within terminal.
- Use 30% Recycled Asphalt Pavement in the annual runway maintenance programme.
- Investigate the use of wood-fired boilers for heating in the terminal.
- Investigate the use of biofuel for the diesel boilers in the terminal.

GHG emissions reduction report against last year's plan –

Below are some of the actions taken in 2008/2009 aimed at reducing GHG emissions arising from CIAL operations:

- A detailed audit of the CIAL's two Building Management Systems which control heating, ventilation, lighting, potable water pumps, emergency generators and air conditions at the International and Domestic Terminal, as well as the CIAL Facilities Yard was carried out and identified opportunities to reduce energy use by 16%.
- The use of Recycled Asphalt Pavement (RAP) in hot mix for runway maintenance works was increased from 14% to 29% of the total hot mix used.
- To assist with reducing the amount of GHG from waste disposal, to landfill, 26 recycling stations were installed in the international terminal and car park building. CIAL began work on a programme of aligning recycling collection within the terminal with the city's kerbside programme to enable recyclable material to be taken to the new Meta Material Recycling Facility.
- Scoping work was begun into the potential for wood fired boilers at the terminal.

Offset – 2091 tonnes CO₂e. VERs² PRE Tararua II windpower project. Serial numbers 339757 – 341847 have been cancelled on the carboNZero programme registry. Carbon credits were not required to offset emissions from purchased electricity because all electricity is purchased from Meridian Energy (1931 tCO₂e). Emissions from Farm

² VERs are created by eligible projects for emissions reductions achieved up to the end of 2007.

Summary of carboNZero certification:

Christchurch International Airport Limited

Holdings (412 tCO₂e) and one-time emissions from new building construction (0 tCO₂e) were excluded from the offset required for certification.

Verified by – PricewaterhouseCoopers.

Threshold of materiality – Excluded emissions do not exceed 5% of the total footprint for organisation and product boundary stated.

Level of assurance – Reasonable assurance

Certification status – carboNZero certified “organisation” covering Terminal Buildings (operations), corporate operations, emergency response, airfield and infrastructure maintenance.

Certificate number – 2009074J

Valid until – 30 September 2010.