

Summary of carboNZero certification:



Christchurch International Airport Ltd

Meets the requirements of carboNZero^{Cert™} certification having measured and committed to reducing its greenhouse gas emissions and neutralised the remaining unavoidable emissions in respect of its organisation including terminal buildings (operations), corporate operations, emergency response, airfield and infrastructure maintenance

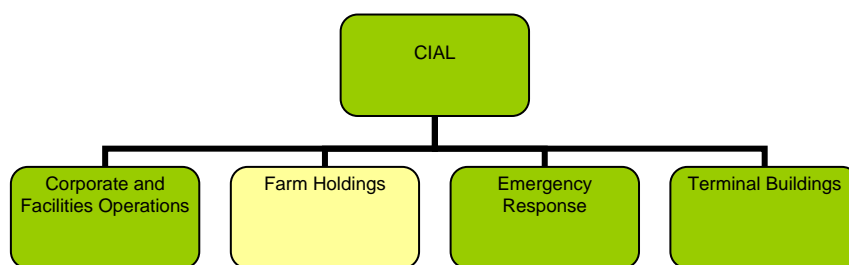


Introduction¹ – Christchurch International Airport Limited (CIAL) owns and operates New Zealand’s key southern air travel gateway and is a vital hub for the South Island’s tourism and freighting industries. Christchurch International Airport Limited’s core business is the efficient and safe operation of Christchurch International Airport.

Christchurch International Airport Limited was established as a limited liability company in 1988 and ownership is now shared 75% by Christchurch City Holdings Limited and 25% by the New Zealand Government. The airport currently employs 160 full-time equivalent staff in the areas of administration, airport fire services, customer services, management, property, facilities services and travel and information services.

Programmes have progressively been implemented to ensure best practice environmental management at the airport. Examples include an environmental audit programme for Christchurch International Airport Limited and airport businesses and the undertaking of comprehensive energy audits of terminal operations. Programmes are also in place to ensure best practice initiatives in the areas of storm water discharge, solid waste disposal, energy conservation, air, and water quality.

Boundary – the diagram below shows the organisational structure used for describing Christchurch International Airport Ltd’s greenhouse gas (GHG) emissions inventory, and what business units were included in the carboNZero certification. Yellow business units were measured but excluded from the certification.



Consolidation approach – operational control

Base year – 01/01/2006 to 31/12/2006

Measurement period – 01/01/2007 to 30/06/2008 (18 month period)

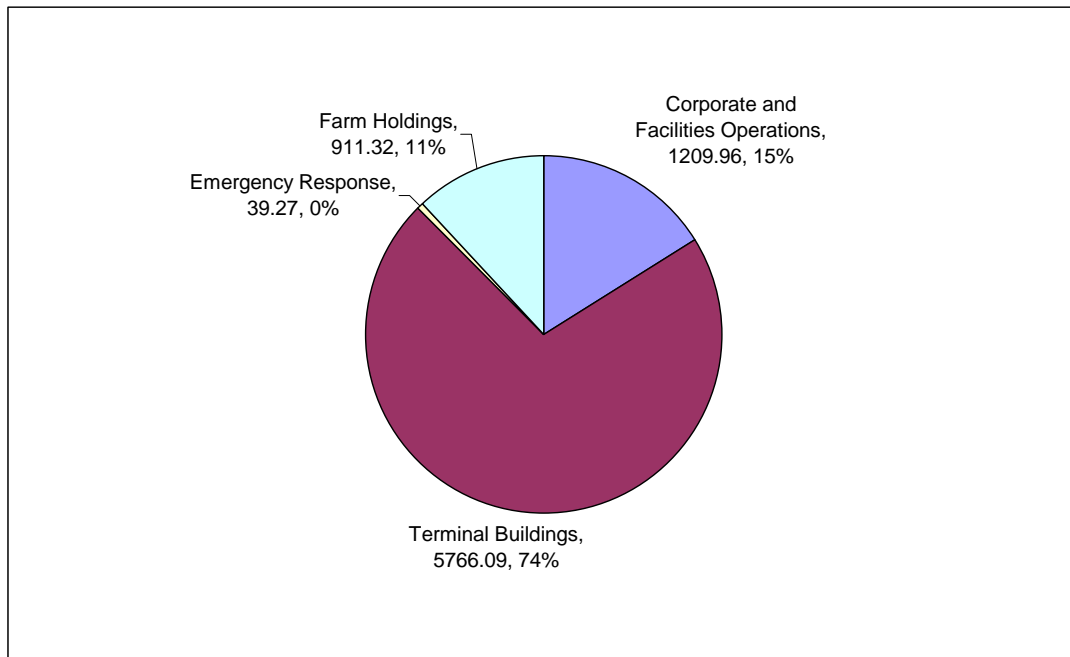
¹ **Disclaimer:** This Disclosure Statement is a summary of the verified information considered for certification and the certification decision. It should not be taken to represent the full submission for certification. While every effort has been made to ensure that the information in this Disclosure Statement is accurate and complete, Landcare Research does not, to the maximum extent permitted by law, give any warranty or guarantee relating to the accuracy or reliability of the information.

Summary of carboNZero certification:



Christchurch International Airport Ltd

GHG emissions source inclusions – the diagram below shows the operational GHG emissions for Christchurch International Airport Ltd by emissions source. Christchurch International Airport Ltd's total emissions for this period were 8059 tonnes carbon dioxide equivalents (CO₂e) comprising 3042 tonnes CO₂e Scope 1, 4224 tonnes CO₂e Scope 2 and 793 tonnes CO₂e Scope 3 emissions. Christchurch International Airport Ltd's emissions consist of 7976 tonnes CO₂e operational emissions and 83 tonnes CO₂e non-operational emissions.



GHG emissions source exclusions – The following emissions sources were excluded from the emissions inventory:

- Staff travel accommodation
- Airline quarantined waste
- Construction of leased buildings
- Couriers
- Staff taxi travel
- Tenant electricity
- Aircraft Movements

GHG emissions reduction commitments – Christchurch International Airport Ltd has developed a GHG emissions reduction plan. Some projects in this plan include:

- Carry out detailed audit of the Building Maintenance System (BMS) in the terminal.
- Where practicable use 20% Recycled Asphalt Pavement in the runway maintenance programme.
- Investigate options of using wood burning technology to replace diesel and LPG use in terminal boilers
- Ensure requirements of Target REBRI Programme run by Christchurch City Council are implemented during new terminal development.
- Investigate opportunities to increase diversion of waste from landfill resulting from the development of city Material Recovery Facilities.

Summary of carboNZero certification:



Christchurch International Airport Ltd

GHG emissions reduction report against last year's plan – Some projects achieved from the previous management plan include:

- **Energy:** A target to achieve a 5% (kWh/m²) reduction in energy consumption over 2007 levels, by 2010 was established. The comprehensive monthly monitoring and targeting programme to identify and energy inefficiency was continued and range of low cost range of low cost of energy management initiatives including the running of an energy awareness campaign for campaign for all staff.
- **Runway Maintenance** - trialled the use of a COOL Pave product which has lower carbon emission associated with its production. Usage of 200 tonnes of new material was avoided by the use of Recycled Asphalt Pavement – this was the first use of RAP on an airfield and was made up 14% of the runway maintenance programme.
- **Waste:** A detailed waste audit of all terminal waste was undertaken. CIAL identified further opportunities to minimise paper and organic waste including distribution of staff communication such as the annual report on-line and introduction of EM Bokashi composting into staff café.

Offset – 2795 tonnes CO₂e. VERs² from EBEX21³ regeneration of native forest projects and PRE⁴ Tararua II wind power projects. Serial numbers PRE Tararua II windpower 314691-316585 and EBEX21 108647-109546 have been cancelled on the carboNZero programme registry. Carbon credits were not required to offset emissions from purchased electricity because all electricity is purchased from Meridian Energy (4224 tCO₂e). Emissions from Farm Holdings (957) and one-time emissions from new building construction (83) were excluded from the offset required for certification.

Verified by – PricewaterhouseCoopers.

Threshold of materiality – excluded emissions do not exceed 5% of the total footprint for organisation boundary stated.

Level of assurance – reasonable assurance

Certification status – carboNZero certified “organisation” covering terminal buildings (operations), corporate operations, emergency response, airfield and infrastructure maintenance.

Certificate number – 2009014

Valid until – 30 September 2009.

² VERs are created by eligible projects for emissions reductions achieved up to the end of 2007.

³ EBEX21 – Emissions Biodiversity Exchange in the 21st Century project creates carbon credits through the regeneration of native forest on private land – see www.ebex21.co.nz.

⁴ PRE - Projects to Reduce Emissions is a New Zealand government scheme for projects that are eligible under the Joint Implementation initiative of the Kyoto Protocol – see www.mfe.govt.nz.