

## Summary of carboNZero certification: Cape Campbell Wines Ltd



*Cape Campbell Wines Ltd meets the requirements of carboNZero<sup>Cert™</sup> certification having measured and committed to reducing its greenhouse gas emissions and neutralised the remaining unavoidable emissions in respect of its organisation and selected wine products.*



**Introduction<sup>1</sup>** – Cape Campbell Wines is family owned and operated. They produce premium wine, sourcing fruit both from various contract vineyards (35%) and their own vineyards (65%). Most of their vineyard labour is hired in from independent contractors who support the Government initiative, RSE scheme.

Cape Campbell Wines don't have their own winery but have a 33% share in a wine processing plant called South Pacific Cellars (SPC). All of Cape Campbell's grapes are processed by (SPC) and then transferred to Wine Works Marlborough (piped direct), which is contracted to bottle, store and distribute all their export orders. The administration, sales and marketing functions are run from a small office based in Blenheim.

**Boundary** – Figure 1 below shows the organisational structure of Cape Campbell wines. This structure has been used to determine the greenhouse gas (GHG) emissions inventory and what business units were to be included and excluded from the carboNZero certification.

The cream coloured business units were excluded from the GHG emissions inventory. The percentage figures indicate the level of ownership by Cape Campbell wines.

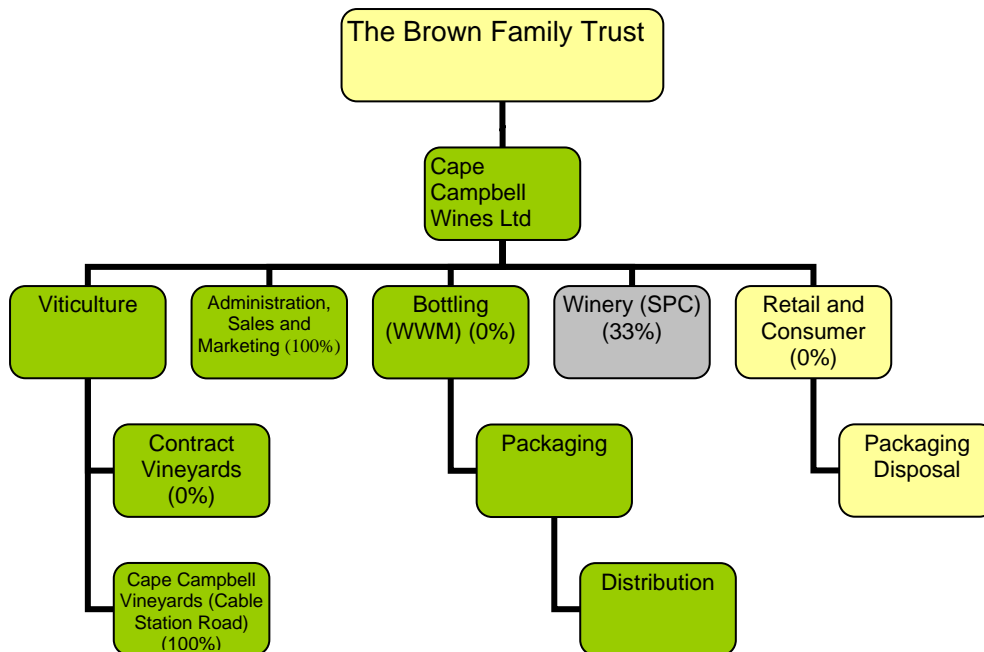
There is no operational control over the winery. Cape Campbell product accounts for 13% of the winery (SPC) production.

Figure 2 shows the boundaries for the organization and product certification. The cream coloured business units were excluded from the GHG emissions inventory.

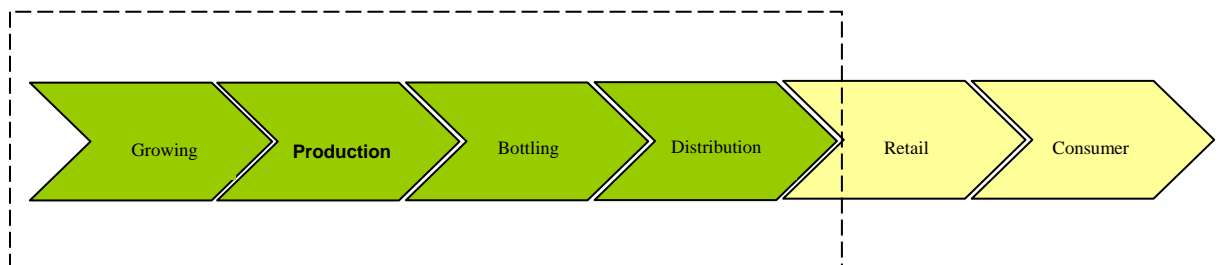
---

<sup>1</sup> **Disclaimer:** This Disclosure Statement is a summary of the verified information considered for certification and the certification decision. It should not be taken to represent the full submission for certification. While every effort has been made to ensure that the information in this Disclosure Statement is accurate and complete, Landcare Research does not, to the maximum extent permitted by law, give any warranty or guarantee relating to the accuracy or reliability of the information.

# Summary of carbonZero certification: Cape Campbell Wines Ltd



**Figure 1:** Organisational diagram for Cape Campbell Wines Ltd including product



**Figure 2:** Boundary for Cape Campbell Wines Ltd GHG measurement of the wine product

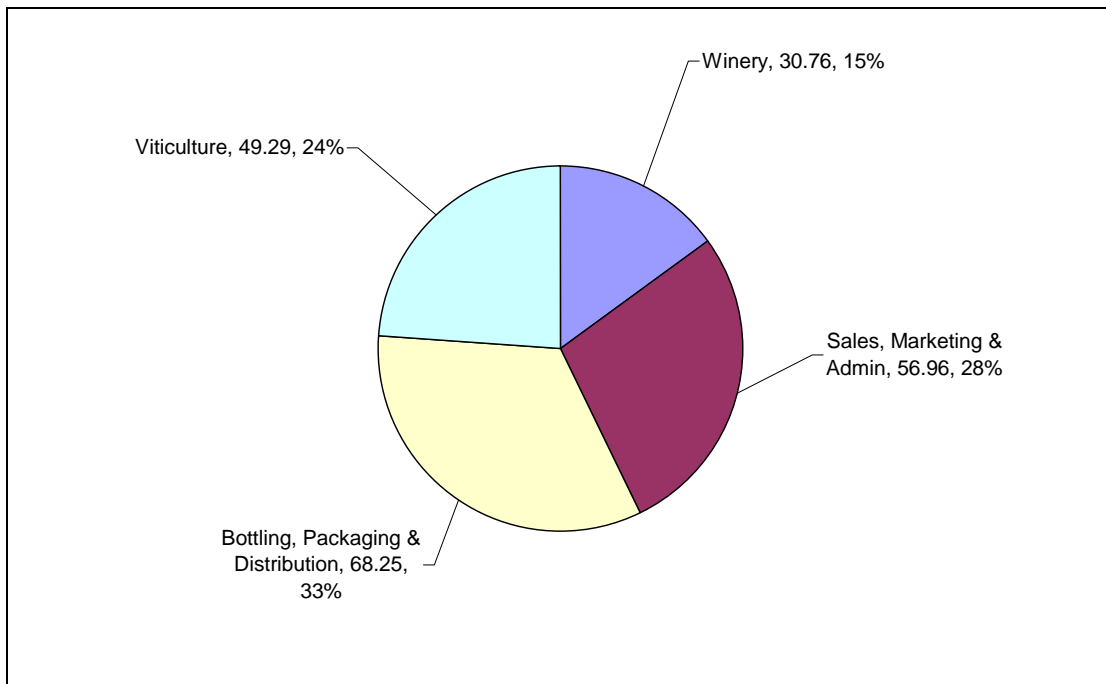
**Consolidation approach** – operational control

**Base year** – 1/7/2007 - 30/6/2008

**Measurement period** – 1/7/2007 - 30/6/2008

**GHG emissions source inclusions** – the diagram below shows the operational GHG emissions for Cape Campbell by emissions source. Cape Campbell’s total emissions for this period were 206 tonnes carbon dioxide equivalents (CO<sub>2</sub>e) comprising 47.07 tonnes CO<sub>2</sub>e Scope 1, 1.46 tonnes CO<sub>2</sub>e scope 2 and 156.73 tonnes CO<sub>2</sub>e Scope 3 emissions.

## Summary of carboNZero certification: Cape Campbell Wines Ltd



**GHG emissions source exclusions** – Significant emission source exclusions include:

- Fertiliser – embodied emissions (insufficient activity data)
- Office administration – waste (lack of data)
- Electricity use – outsourced bottling (lack of data)
- Dry Goods – embodied emissions (insufficient data and goods make up less than 1% of wine product)

**GHG emissions reduction commitments** – Cape Campbell have developed an emissions reduction plan. Some of the key projects that involve reduction are as follows:

- To work with the SPC winery to gain a more accurate picture of the emissions that are pertinent to Cape Campbell and look at a means of measuring those so that reductions can be made.
- Reduce the weight of glass bottles for future bottling
- Use smaller, lighter cartons for printing.
- Plan travel to minimise trips overseas while maximising the distributor visits per trip.
- Minimise local travel.
- Switch office power supply to a carbon neutral supplier

**Offset** – 206 tonnes CO<sub>2</sub>e. VERs<sup>2</sup> from PRE<sup>3</sup> wind power projects. Serial numbers 313297-313502 have been cancelled on the carboNZero programme registry.

**Verified by** –Telarc SAI Limited

<sup>2</sup> VERs are created by eligible projects for emissions reductions achieved up to the end of 2007.

<sup>3</sup> PRE - Projects to Reduce Emissions is a New Zealand government scheme for projects that are eligible under the Joint Implementation initiative of the Kyoto Protocol – see [www.mfe.govt.nz](http://www.mfe.govt.nz)

## Summary of carboNZero certification: Cape Campbell Wines Ltd



**Threshold of materiality** – excluded emissions do not exceed 5% of the total footprint for organisation and product boundary stated.

**Level of assurance** – reasonable assurance

**Certification status** – carboNZero certified “organisation” and selected<sup>4</sup> “products”

**Certificate number** – 2009010

**Valid until** – 30 September 2009

Cape Campbell Wines, 56a Scott Street, Blenheim  
Home of Cape Campbell, Cable Station and Blenheim Point  
Tel: 0064 35794250, Email: [wine@capecampbell.co.nz](mailto:wine@capecampbell.co.nz), Web: [www.capecampbell.co.nz](http://www.capecampbell.co.nz)

---

<sup>4</sup> **Cape Campbell** (Sauvignon Blanc, Chardonnay, Pinot Gris, Pinot Noir, Gewurztraminer, Reserve Chardonnay, Reserve Pinot Noir), **Cable Station** (Sauvignon Blanc, Chardonnay, Pinot Gris, Pinot Noir), **Lobster Reef** (Sauvignon Blanc, Chardonnay, Pinot Noir), **Blenheim Point** (Sauvignon Blanc, Chardonnay, Pinot Noir).