

# Summary of CEMARS® certification:



Blue Star Taxis (Christchurch) Society Ltd

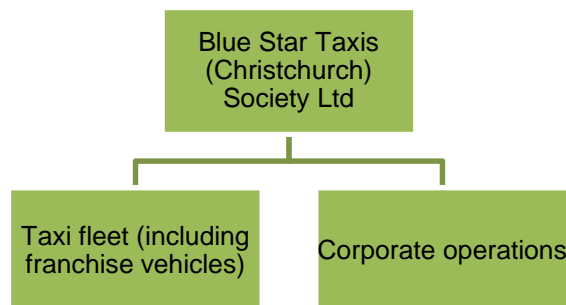
*Blue Star Taxis meets the requirements of the CEMARS® certification having measured its greenhouse gas emissions in compliance with the requirements of ISO 14064-1 and committed to managing and reducing its emissions in respect of its organisation including its taxi service.*



**Introduction<sup>1</sup>** – Blue Star Taxis was first established in 1929 and is the largest taxi company in the South Island. Blue Star Taxis is Canterbury owned and operated with a passion for providing safe, reliable transport to locals and visitors. Blue Star Taxis offer a number of services including:

- Dial a Driver – is a service whereby a taxi will collect both the customer and their vehicle, for occasions where the customer has consumed too many drinks to safely drive their own car home.
- Airport – a pre-booking service for going to and from the airport
- Hybrids – a number of vehicles are hybrids as part of Blue Star Taxis commitment to environmental sustainability
- Tours – personalised tours for visiting various attractions in and around Christchurch

**Boundary** – the diagram below shows the organisational structure used for describing Blue Star Taxis greenhouse gas (GHG) emissions inventory, and what business units were included in the carbonZero certification.



**Consolidation approach** – operational control

**Base year** – 1/04/2009 to 31/03/2010

**Measurement period** - 1/04/2009 to 31/03/2010

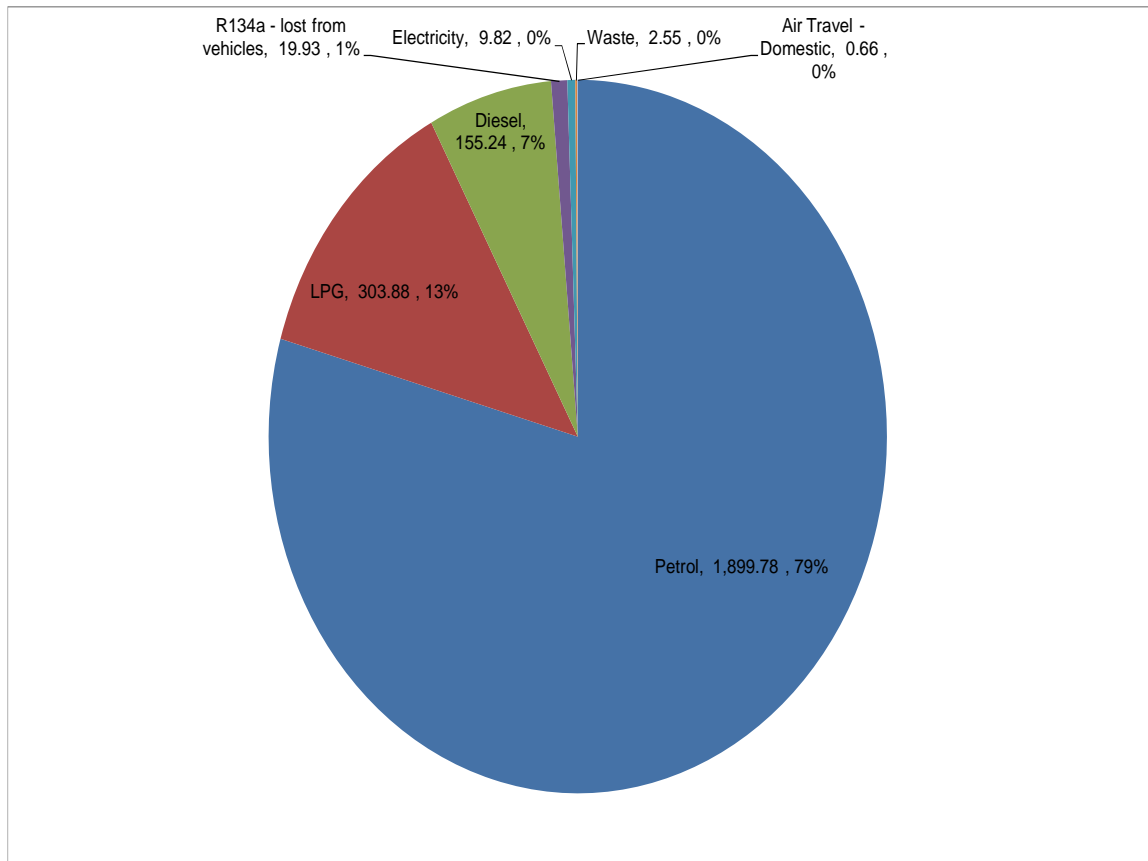
<sup>1</sup> **Disclaimer:** This Disclosure Statement is a summary of the verified information considered for certification and the certification decision. It should not be taken to represent the full submission for certification. While every effort has been made to ensure that the information in this Disclosure Statement is accurate and complete, Landcare Research does not, to the maximum extent permitted by law, give any warranty or guarantee relating to the accuracy or reliability of the information.

# Summary of CEMARS® certification:



Blue Star Taxis (Christchurch) Society Ltd

**GHG emissions source inclusions** – the diagram below shows the operational GHG emissions for Blue Star Taxis by emissions source. Blue Star Taxis total emissions for this period were 2,392 tonnes carbon dioxide equivalents (CO<sub>2</sub>e) comprising 2,379 tonnes CO<sub>2</sub>e Scope 1, 10 tonnes CO<sub>2</sub>e Scope 2 and 3 tonnes CO<sub>2</sub>e Scope 3 emissions.



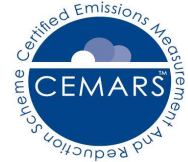
**GHG emissions source exclusions** – the following emission sources have been excluded as being *de minimis* to the emissions inventory:

- Electricity associated with vehicle cleaning/ grooming
- Vehicle maintenance services
- Freight/courier services
- Business accommodation

**GHG emissions reduction commitments** – Blue Star Taxis has developed a GHG emissions reduction plan. Some projects in this plan include:

- New Taxi Dispatch System with GPS Location capabilities.
- Actively encouraging vehicle owners to replace aging vehicles with more fuel efficient models or hybrids
- Decrease the age of the current fleet - the intention of decreasing the vehicle fleet age is that the rated vehicle fuel efficiency will improve

# Summary of CEMARS<sup>®</sup> certification:



Blue Star Taxis (Christchurch) Society Ltd

**Verified by** – AsureQuality Ltd

**Threshold of materiality** – Excluded emissions do not exceed 5% of the total footprint for organisation stated.

**Level of assurance** – Limited

**Certification status** – CEMARS certified “organisation” covering organisation and its taxi service

**Certificate number** – 2010113J

**Valid until** – 31 July 2013

515 Moorhouse Ave, Phillipstown, Christchurch, New Zealand. Telephone: +64 (03) 3799 799. Email: [bob.wilkinson@bluestartaxis.org.nz](mailto:bob.wilkinson@bluestartaxis.org.nz) Web: [www.bluestartaxis.org.nz](http://www.bluestartaxis.org.nz)