

Summary of CEMARS certification:



Antarctica New Zealand

Antarctica New Zealand meets the requirements of CEMARS certification having measured its greenhouse gas emissions in compliance with ISO 14064-1 and committed to managing and reducing its emissions in respect of the operational activities of its organisation.



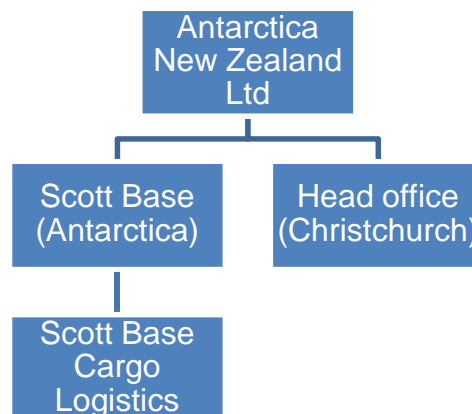
Introduction¹ – Antarctica New Zealand is a Crown Entity, and is responsible for “developing, managing, and administering New Zealand’s activities in Antarctica and the Southern Ocean, particularly the Ross Sea region.”

Key activities include “supporting scientific research, conserving the intrinsic values of Antarctica and the Southern Ocean and raising public awareness (in part through arts, media and youth programmes) of the international significance of the continent.”

Antarctica New Zealand is also responsible for managing Scott Base, New Zealand’s permanent base in Antarctica. The Base provides services and accommodation for the researchers and groups that visit Antarctica.

Antarctica New Zealand work closely with the Italian Antarctic Programme and the US Antarctic Programme. Antarctica New Zealand also has secondments from the New Zealand Defence Force.

Boundary – the diagram below shows the organisational structure used for describing Antarctica New Zealand’s greenhouse gas (GHG) emissions inventory, and what business units were included in the carboNZero certification.



Consolidation approach – operational control

Base year – 01/07/2008 to 30/06/2009

¹ **Disclaimer:** This Disclosure Statement is a summary of the verified information considered for certification and the certification decision. It should not be taken to represent the full submission for certification. While every effort has been made to ensure that the information in this Disclosure Statement is accurate and complete, Landcare Research does not, to the maximum extent permitted by law, give any warranty or guarantee relating to the accuracy or reliability of the information.

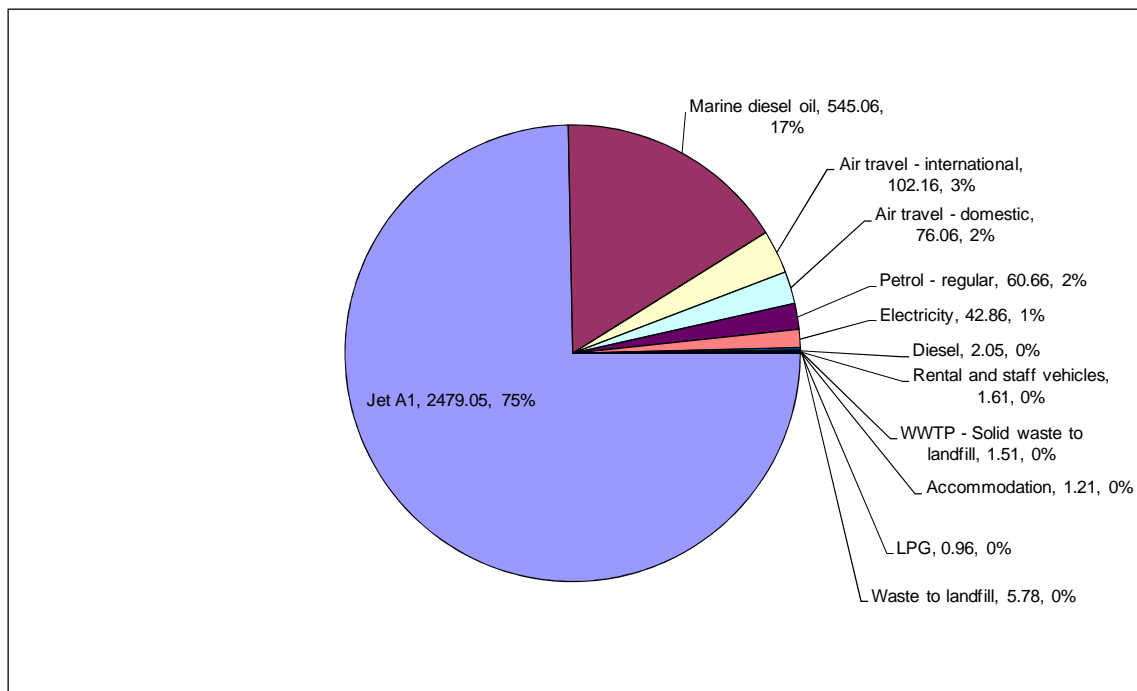
Summary of CEMARS certification:



Antarctica New Zealand

Measurement period – 01/07/2008 to 30/06/2009

GHG emissions source inclusions – the diagram below shows the operational GHG emissions for Antarctica New Zealand by emissions source. Antarctica New Zealand's total operational emissions for this period were 3319.91 tonnes carbon dioxide equivalents (CO₂e) comprising 1107.24 tonnes CO₂e Scope 1, 42.86 tonnes CO₂e Scope 2 and 2169.81 tonnes CO₂e Scope 3 emissions. There were also an additional 439 tonnes CO₂e of non-operational emissions associated with building projects.



GHG emissions source exclusions – the following emissions sources were excluded:

- Postal and general courier services
- Contractor air travel
- Contractor vehicle travel

GHG emissions reduction commitments – Antarctica New Zealand has developed a GHG emissions reduction plan. Some projects in this plan include:

- Scott Base building performance improvements – including monitoring and control equipment
- Optimise use of wind energy
- Scott Base vehicle fleet reduction and management
- Investigate more renewable energy supply options for Scott Base, field camps, and field huts
- Reduce air cargo to Scott Base
- Use of a more energy efficient helicopter at Scott Base

Summary of CEMARS certification:



Antarctica New Zealand

Verified by – carbonZero Strategic Business Unit

Threshold of materiality – excluded emissions do not exceed 5% of the total footprint for organisation and product boundary stated.

Level of assurance – limited assurance

Certification status – CEMARS certified “organisation” covering Scott Base and Head Office.

Certificate number – 2010063J

Valid until – 30 September 2010.

Antarctica New Zealand, Administration Building, International Antarctic Centre, 38 Orchard Road, Christchurch 8053, New Zealand. Tel: +64 3 358 0200. Email: i.miller@antarcticanz.govt.nz Web: www.antarcticanz.govt.nz