

Summary of carboNZero certification:



Yealands Estate Wines Limited

Yealands Estate Wines Limited meets the requirements of the carboNZero^{Cert™} certification having measured and reduced its greenhouse gas emissions in compliance with the requirements of ISO 14064-1 including additional life cycle emissions associated with the selected products, committed to managing and reducing its emissions and neutralised its remaining unavoidable emissions through the cancellation of an appropriate number of verified carbon credits in respect of the operational activities of its organisation including the selected wine products.



Introduction¹ – Yealands Estate Wines Limited is based in the Awatere Valley, to the south east of Marlborough's Wairau Plains. It is owned by Peter Yealands and his family. Its core activities as a company are the winemaking and distribution activities associated with its wine brands.

Yealands Estate Wines Limited operates out of the Yealands Winery. This winery was built from scratch to target a 6 star standard in the Green Star NZ Industrial rating system. It is designed to handle some 11,000 tonnes of premium wine at full production, the majority of which will come off the vines of its sister company Yealands Estate Limited.

The winery was built to excel in large-scale, high quality wine production without compromising the environment. Yealands Estate Wines Limited understand the environmental issue of anthropogenic climate change and, as part of a much broader commitment to sustainability, are carboNZero certified for its operational emissions, selected wine products and total grape supply..

Boundary – the diagram below shows the organisational and product structure used for describing Yealands Estate Wines Limited greenhouse gas (GHG) emissions inventory, and what business units were included in the carboNZero certification. The percentage figures indicate the level of ownership by Yealands Estate Wines Limited.

¹ **Disclaimer:** This Disclosure Statement is a summary of the verified information considered for certification and the certification decision. It should not be taken to represent the full submission for certification. While every effort has been made to ensure that the information in this Disclosure Statement is accurate and complete, Landcare Research does not, to the maximum extent permitted by law, give any warranty or guarantee relating to the accuracy or reliability of the information.

Summary of carboNZero certification:



Yealands Estate Wines Limited

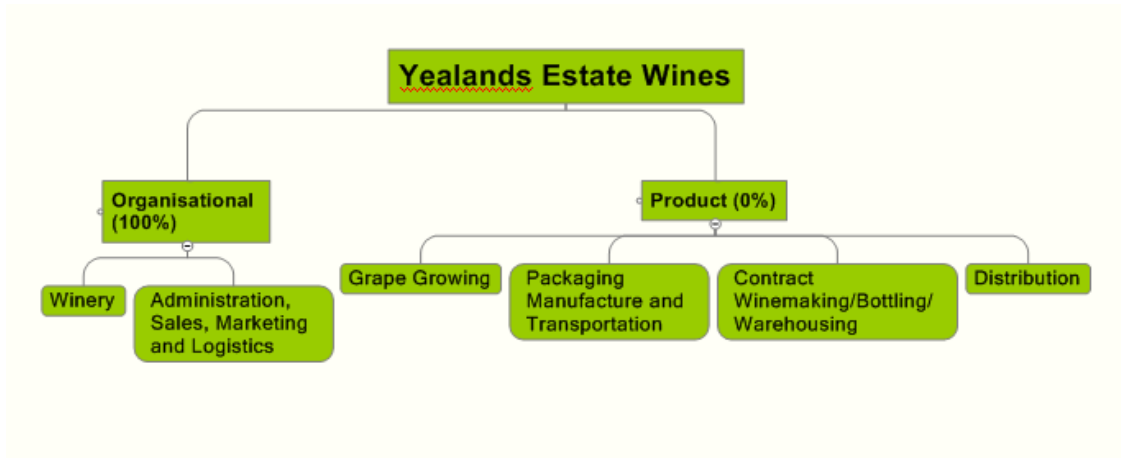


Figure 1: Organisational structure.

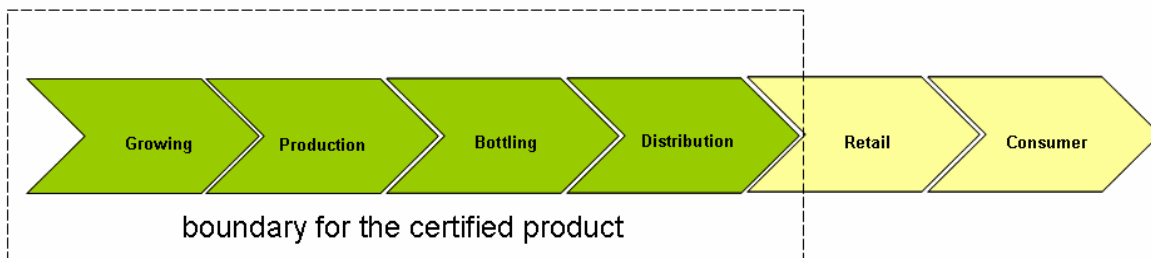


Figure 1: Life cycle emissions sources for selected wine products

Consolidation approach – Operational control

Base year – 01/07/2008 to 30/06/2009

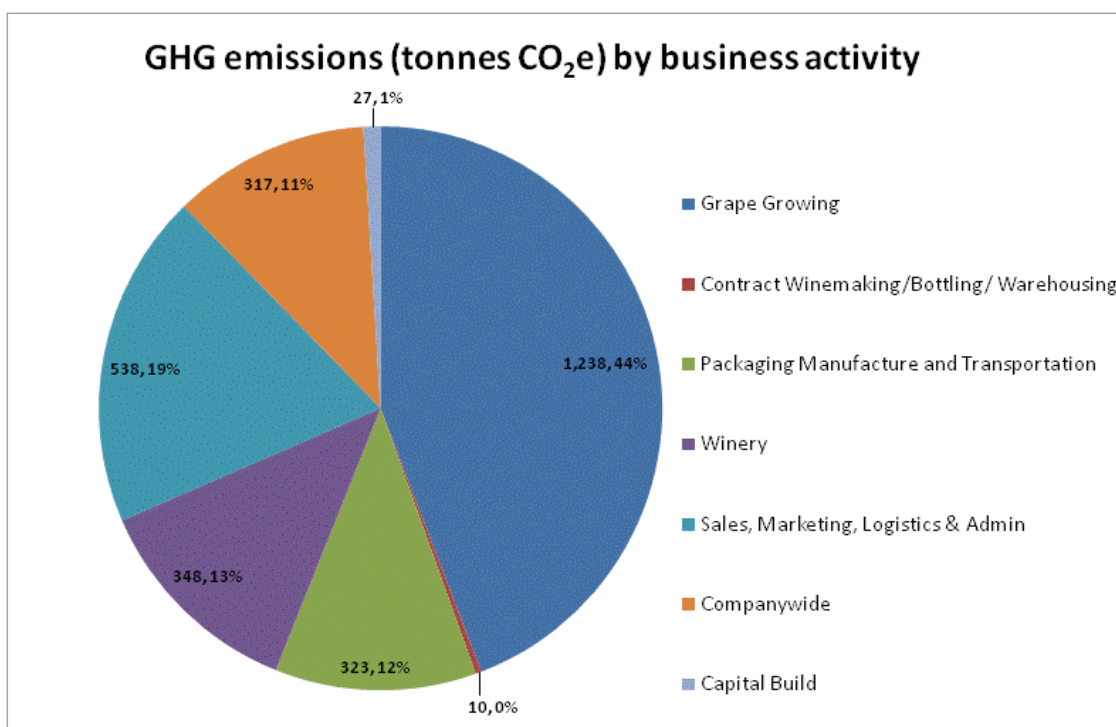
Measurement period – 1/07/2009 to 30/06/2010

GHG emissions source inclusions – Figure 3 shows the GHG emissions for Yealands Estate Wines Limited by emissions source. Yealands Estate Wines Limited’s total emissions for this period were 2801.51 tonnes carbon dioxide equivalents (CO₂e) comprising 135.83 tonnes CO₂e Scope 1, 181.28 tonnes CO₂e Scope 2 and 2484.4 tonnes CO₂e Scope 3 emissions. Of these Scope 3 emissions 27.37 tonnes CO₂e were one time emissions from the capital build of the Yealand’s Winery.

Summary of carboNZero certification:



Yealands Estate Wines Limited



GHG emissions source exclusions – The following emissions sources were excluded from the inventory:

De minimis (estimated to be less than 1% of total inventory)

- hotel accommodation and some ground transport
- embodied emissions in minor capital items and equipment—embodied emissions in consumables
- contract bottling and storage emissions
- enteric livestock fermentation (not owned by Yealands Estate Wines Limited)
- capital build from suppliers onsite emissions including the transportation of people, plant and equipment to the winery site
- embodied emissions in wine additives
- emissions from the Auckland sales office and Australian home offices
- wastewater treatment

GHG emissions reduction commitments – Yealands Estate Wines Limited has developed a GHG emissions reduction plan. Some projects in this plan include:

- Installation of a biomass boiler which will burn vine prunings
- Founder member of Marlborough bio-diesel consortium with a view to using bio-diesel on Yealands owned vineyards
- Continued roll out of alternate packaging in New Zealand and export markets
- Organics Conversion project for trial vineyard block, with aim over a period of years to reduce agrichemical and fertiliser applications across Yealands owned vineyards.

GHG emissions reduction report against last year's plan – Yealands Estate Wines Limited has achieved no significant GHG emissions reductions and removals for this reporting period. Yealands Estate Wines is targeting aggressive growth and this can be seen from the increase of emissions, especially in regards to scope 3 emissions from

Summary of carboNZero certification:



Yealands Estate Wines Limited

packaging and product distribution. In the winery there has been a reduction in CO₂e per litre of wine processed, but this is more due to economies of scale than any significant reduction project.

Offset – 2662 tonnes CO₂e. VCUⁱ from Brazilian Arrozal, GGP and Sul America Ceramics Fuel Switching Project. Serial numbers 6974960-6976865 and 6979866-6980621 have been cancelled (or equivalent) on the Markit registry. Emissions from one-time emissions from the capital build of the winery totalling 27.37 tCO₂e were excluded from the offset required for certification. Carbon credits were not required to offset 112.55 tCO₂e emissions from vineyard electricity use, as an account was moved over to Meridian Energy during the reporting period.

Verified by – AsureQuality

Threshold of materiality – excluded emissions do not exceed 5% of the total footprint for organisation and product boundary stated.

Level of assurance – reasonable assurance for organisation, limited assurance for products.

Certification status – carboNZero certified “organisation” and “product” covering Yealands Estate Wines Limited and productsⁱⁱ² branded Peter Yealands, Yealands, Yealands Estate, Yealands Way, New Yealands, Yealands Showcase, Petes Shed, Clearwater Cove and Full Circle.

Certificate number – 2010132J

Valid until – 31 October 2013

Yealands Estate Wines Limited, Corner of Seaview and Reserve Roads, Seddon, Marlborough New Zealand. Tel: +64 3 575 7618 Email: info@yealands.co.nz, Web: www.yealands.co.nz

i VCU = Voluntary Carbon Unit (issued by the VCS Voluntary Carbon Standard).

² 2010 Vintage for: Chardonnay, Gewürztraminer, Pinot Gris, Pinot Noir, Riesling, Rose, Sauvignon Blanc, Tempranillo.