

Summary of CEMARS® certification:



Youth Hostels Association of New Zealand Inc.

Youth Hostels Association of New Zealand Inc. meets the requirements of the CEMARS® certification having measured its greenhouse gas emissions in compliance with the requirements of ISO 14064-1 and committed to managing and reducing its emissions in respect of the operations activities of its organisation including the YHA National Office and all YHA managed hostels within New Zealand.



Introduction¹ – Youth Hostels Association of New Zealand Inc. (YHA New Zealand) is a not-for-profit incorporated society. We are a membership-based charitable organisation with a network of 57 hostels throughout New Zealand from the far north to right down south to a proposed eco-friendly hostel and learning centre on Stewart Island. 26 of these hostels are managed by YHA New Zealand; the remainder of the YHA network consists of Associate partnerships with independently owned and operated hostels that operate under the YHA brand and follow YHA’s standards of quality and consistency, including its sustainability initiatives.

Over its history, YHA New Zealand has developed its hostel network in support of its charitable purpose. Our network not only supports and facilitates travel; it also promotes knowledge and understanding through the social interaction stimulated by our hostels’ communal living and recreational areas. YHA also actively educates customers and members through our pervasive expression and commitment to environmental sustainability, for which the Association has received many awards and accolades over the years. YHA is committed to being an exemplar for social and environmental sustainability.

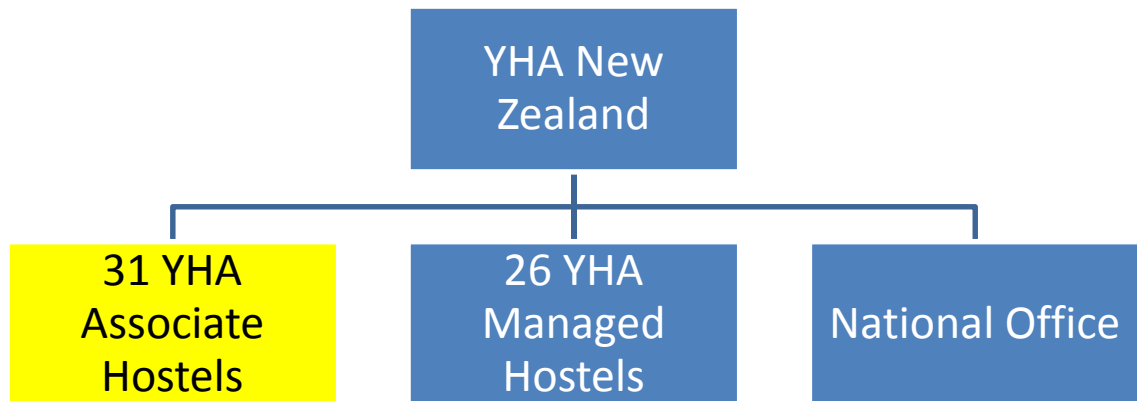
Boundary – The schematic below represents the organisational structure used for describing YHA’s greenhouse gas (GHG) emissions inventory, and business units included in the CEMARS certification. The 31 Associate Hostels are not included in the inventory and certification process and are depicted as yellow in the diagram below.

¹ **Disclaimer:** This Disclosure Statement is a summary of the verified information considered for certification and the certification decision. It should not be taken to represent the full submission for certification. While every effort has been made to ensure that the information in this Disclosure Statement is accurate and complete, Landcare Research does not, to the maximum extent permitted by law, give any warranty or guarantee relating to the accuracy or reliability of the information.

Summary of CEMARS[®] certification:



Youth Hostels Association of New Zealand Inc.



Consolidation approach – operational control

Base year – 01/07/2008 – 30/06/2009

Measurement period – 01/07/2009 – 30/06/2010

GHG emissions source inclusions – The diagram below shows the YHA's operational GHG emissions for the 2009/10 reporting period by emissions source. YHA total emissions for this period were 1150.84 tonnes carbon dioxide equivalents (CO₂e) comprising:

- 339.31 tonnes CO₂e Scope 1
- 581.84 tonnes CO₂e Scope 2
- 229.70 tonnes CO₂e Scope 3

Summary of CEMARS® certification:



Youth Hostels Association of New Zealand Inc.

GHG Emissions data 2009/10

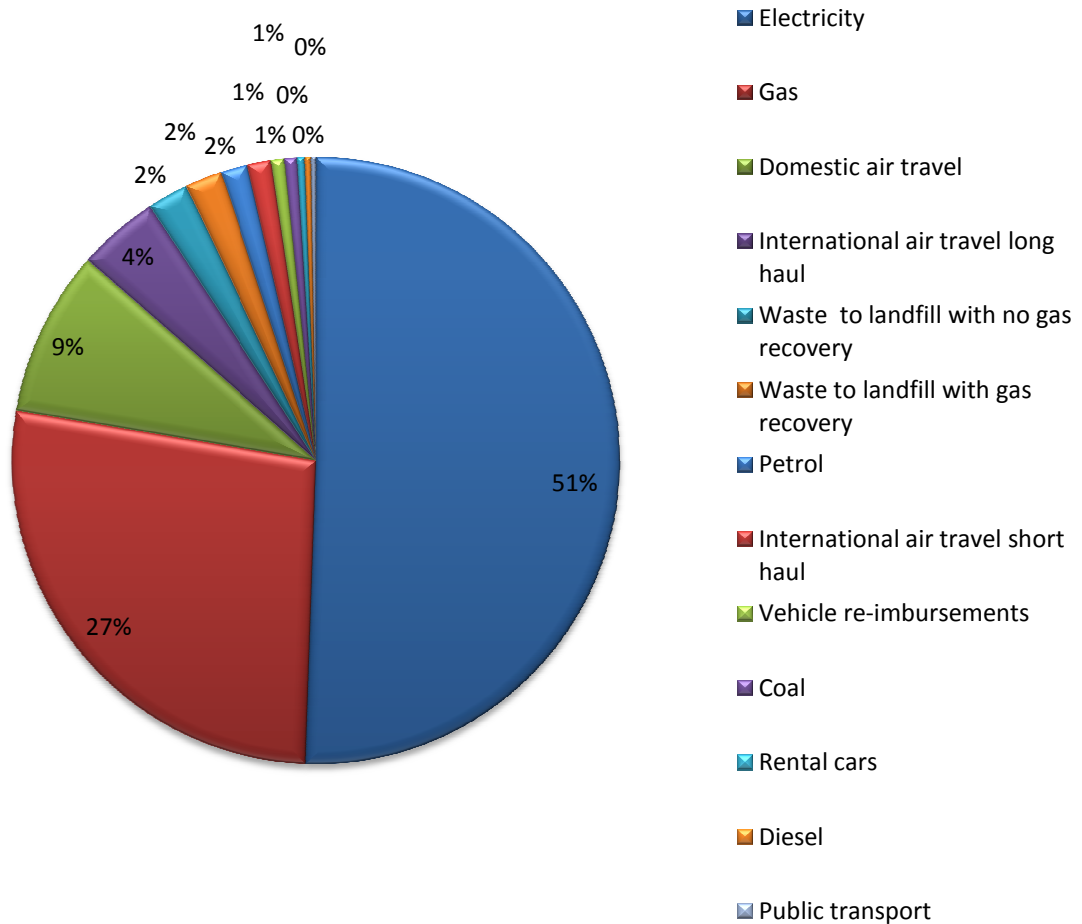


Diagram 1: YHA's operational GHG emissions for the 2009/10 reporting period by emissions source

GHG emissions source exclusions – YHA's 31 Associate hostels are excluded from the inventory. These are small independent businesses operating under the YHA brand. Data has not been incorporated into this report from these hostels as they are independently owned and operated hostels rather than being part of the YHA-managed network.

Small courier packages and freight kilometres for goods delivery parcels have also been excluded from the emissions inventory due to the complexity of weighing and accurately recording different size parcels from the 26 YHA-managed properties. YHA estimates that the magnitude of this exclusion is less than 1% of the total inventory.

Summary of CEMARS[®] certification:



Youth Hostels Association of New Zealand Inc.

GHG emissions reduction commitments – YHA has developed a GHG emissions reduction plan for the forthcoming period. Some projects in this plan include:

Objective	Completion date
1. Reduce emissions from electricity and gas	30/06/2011
2. Reduce emissions from air travel – domestic and international	30/06/2011
3. Reduce waste to landfill	30/06/2011
4. Reduce emissions from rental cars	30/06/2011

GHG emissions reduction report against last year's plan –

There was a 10.85 tonne CO₂e or 0.95% increase in GHG emissions from the 2008/09 to the 2009/10 reporting period. The most significant changes were:

- 66 tonne CO₂e increase in emissions from gas consumption
- 42.3 tonne CO₂e reduction in emissions from electricity consumption
- 13 tonne CO₂e increase in emissions from long haul international flights
- 15 tonne reduction CO₂e in emissions from domestic air flights.

Verified by – carboNZero SBU

Threshold of materiality – excluded emissions do not exceed 5% of the total footprint for organisation and product boundary stated.

Level of assurance – reasonable assurance

Certification status – CEMARS certified “organisation” covering YHA National Office and all YHA-managed hostels within New Zealand.

Certificate number – 2010139J

Valid until – 31 October 2013

Youth Hostel Association of New Zealand Inc, Level 1, 166 Moorehouse Ave, Christchurch 8011, New Zealand. Tel: +64 (0) 3 379 9970. Email: Johnathan.Tunnell@yha.co.nz Web: www.yha.co.nz