

Summary of CEMARS certification:



Proprietors of Wakatu Limited trading as Wakatu Incorporation

Wakatu Incorporation meets the requirements of CEMARS® certification having measured its greenhouse gas emissions in compliance with the requirements of ISO 14064-1 and committed to managing and reducing its emissions in respect of its Head Office functions.



Introduction¹ – Proprietors of Wakatu Limited trading as Wakatu Incorporation was formed in 1977 as a result of descendants of the original owners of the Tenth lands in Te Tau Ihu, top of the South, pooling together their shareholdings in the lands collectively, creating the Incorporation. These original lands are ‘Corpus lands’, and are not permitted to be sold. To become a shareholder in the Incorporation, you must be able to Whakapapa (trace your genealogy) back to one of these original owners.

Today, Wakatu Incorporation has a strong presence economically, not only in Te Tau Ihu, but also in the rest of New Zealand, they also export produce worldwide.

Wakatu Incorporation’s shareholders must be able to Whakapapa back to the original owners of the Corpus lands in the Incorporation, giving the shareholders an emotional bond to these lands. In Maori Tikanga (custom), you do not own the land; it owns you in a sense. When you die, you go back to the land from where you came, the land will always remain. Maori Tikanga also has key conservation themes running throughout. Wakatu Incorporation carries these themes within its purpose and values:

Wakatu Incorporation’s Purpose

To grow our economic base, enabling whanau (family) to achieve their social and cultural goals. In order to realise this dream, we will work to develop:

"A business of the land and sea - he taonga tuku iho - for profit, social and cultural growth through professionalism, honesty and diligence and embracing our tikanga" (Wakatu Incorporation)

Boundary – the diagram below shows the organisational structure used for describing Wakatu Incorporation’s greenhouse gas (GHG) emissions inventory, and what business units were included in the carboNZero certification. Percentage figures indicate percentage ownership. Yellow business units were excluded from the certification.

¹ **Disclaimer:** This Disclosure Statement is a summary of the verified information considered for certification and the certification decision. It should not be taken to represent the full submission for certification. While every effort has been made to ensure that the information in this Disclosure Statement is accurate and complete, Landcare Research does not, to the maximum extent permitted by law, give any warranty or guarantee relating to the accuracy or reliability of the information.

Summary of CEMARS certification:



Proprietors of Wakatu Limited trading as Wakatu Incorporation

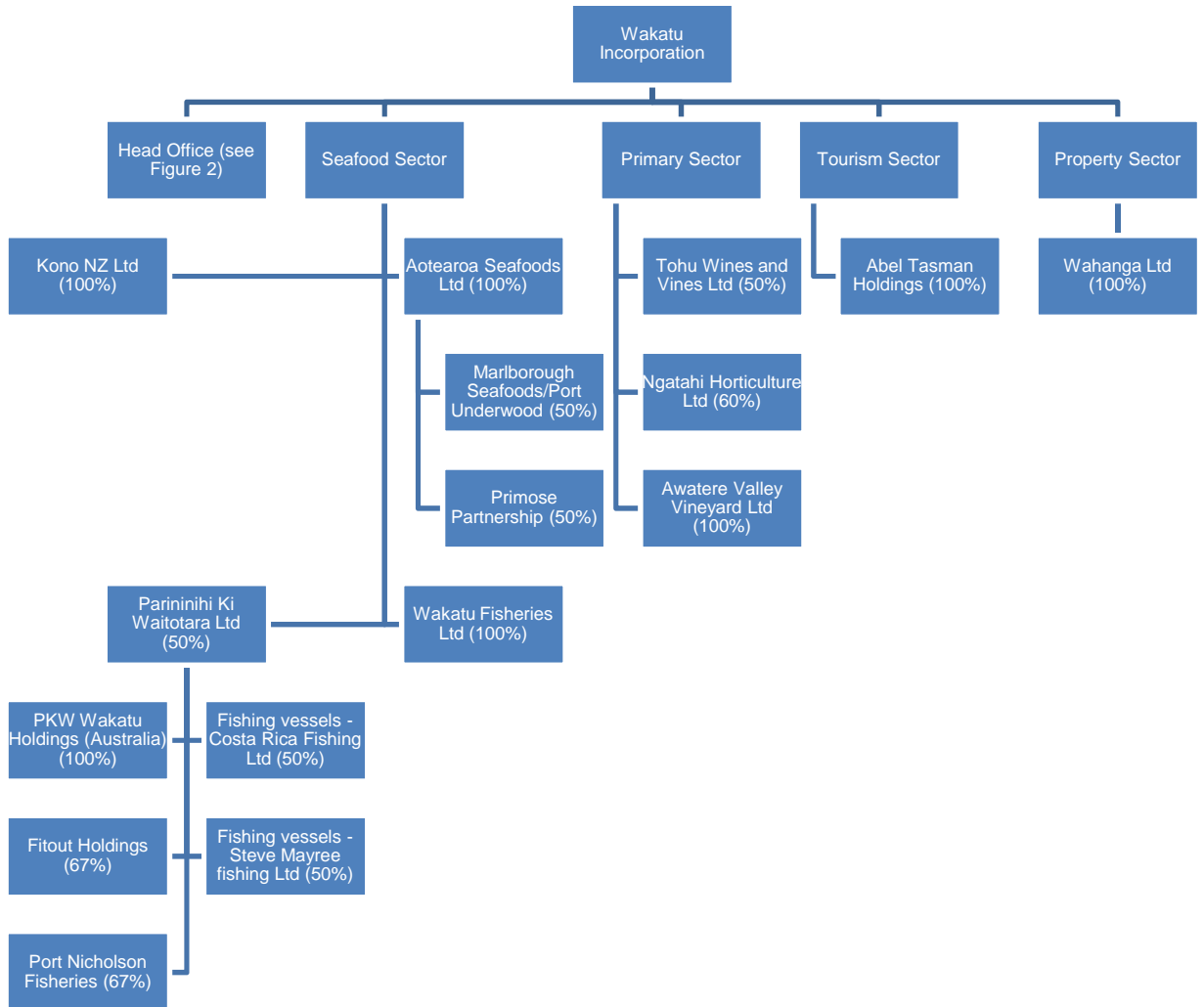


Figure 1: Wakatu Incorporation Organisation Chart

Summary of CEMARS certification:

Proprietors of Wakatu Limited trading as Wakatu Incorporation

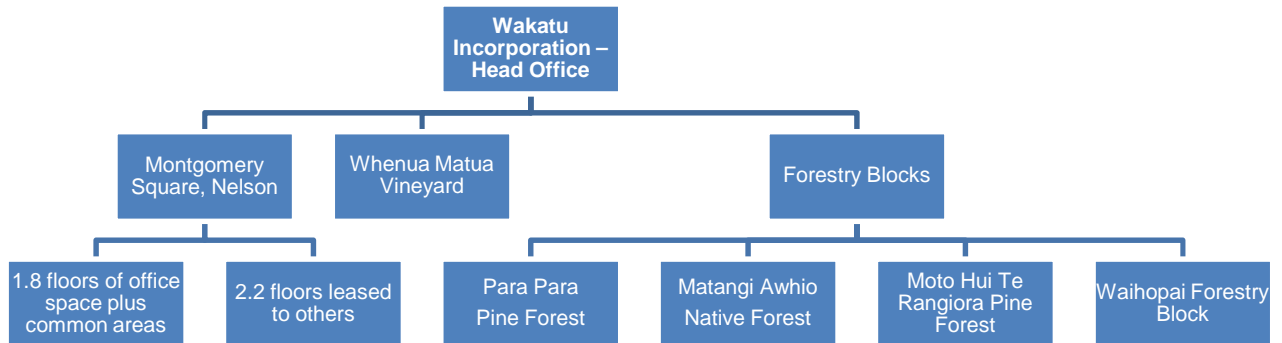


Figure 2: Wakatu Incorporation Head office - structure for GHG reporting.

Consolidation approach – operational control

Base year – 01/08/2008 to 31/07/2009

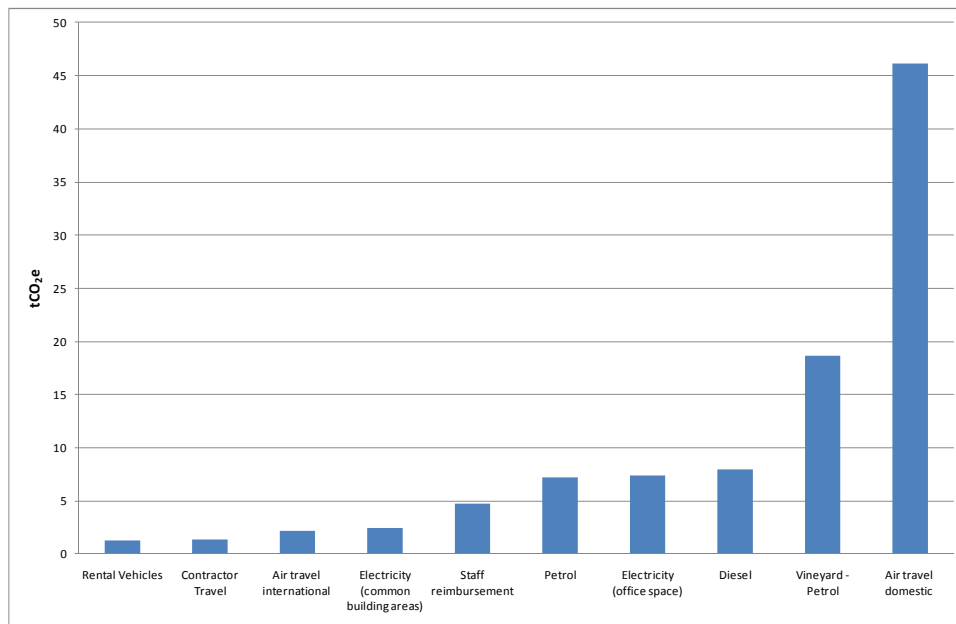
GHG emissions source inclusions – the diagram below shows the operational GHG emissions for Wakatu Incorporation by emissions source. Wakatu Incorporation total emissions for this period were 103.10 tonnes carbon dioxide equivalents (CO₂e) comprising 35.32 tonnes CO₂e Scope 1, 10.78 tonnes CO₂e Scope 2 and 57.0 tonnes CO₂e Scope 3 emissions. The graph below shows Wakatu Incorporation top 10 emission sources.

Wakatu Incorporation's forestry holdings sequestered 1014 tonnes CO₂e during the measurement period.

Summary of CEMARS certification:



Proprietors of Wakatu Limited trading as Wakatu Incorporation



GHG emissions source exclusions –

- Courier Use and Ferry travel - emissions were estimated to be less than 1% of the inventory (*de minimis*)
- Operational Emissions on the Forestry blocks (no operational control over the contractors)
- Nitrogen use in the vineyards (no information available)

GHG emissions reduction commitments – Wakatu Incorporation has developed a GHG emissions reduction plan. Some projects in this plan include:

- Implement recycling and waste management systems in the office
- Install video conferencing facilities
- Commission an energy audit
- Replace vehicle fleet with lower emissions vehicles

Verified by – AsureQuality Ltd

Threshold of materiality – excluded emissions do not exceed 5% of the total footprint for organisation and product boundary stated.

Level of assurance – reasonable assurance for the organisation and limited assurance for the forestry blocks

Certification status – CEMARS certified “organisation” covering head office.

Certificate number – 2010069J

Valid until – 31 January 2011

Wakatu Incorporation, Level 3, Wakatu House, Montgomery Square, Nelson 7040, New Zealand. Tel: +64 (0) 3 546 8648 Email: info@wakatu.org, Web: www.wakatu.org