

## Summary of carboNZero certification:



### Wairau River Wines Limited

*Wairau River Wines Limited meets the requirements of carboNZero<sup>Cert™</sup> certification having measured its greenhouse gas emissions in compliance with the requirements of ISO 14064-1:2006 including additional life cycle emissions associated with all wine products, committed to managing and reducing its emissions and neutralised its remaining unavoidable emissions through the cancellation of an appropriate number of verified carbon credits in respect of its organisation and wine products.*



WAIRAU RIVER WINES  
FAMILY ESTATE SINCE 1978

**Introduction<sup>1</sup>** – Wairau River Wines is a privately owned family wine estate established in 1978 by Phil & Chris Rose. The estate is located in the Rapaura district of the Wairau Valley in Marlborough, New Zealand. Wairau River Wines owns five estate vineyards, a winery that was built in 2002, and a restaurant/cellar door. Wairau River Wines has 11 brands<sup>2</sup>. Their flagship wine is Sauvignon Blanc, while the rest of the portfolio comprises Pinot Gris, Riesling, Gewürztraminer, Chardonnay and Pinot Noir. They employ 18 full-time staff.

**Boundary** – Figure 1 (over page) shows the organisational boundary used for describing Wairau River Wines' greenhouse gas (GHG) emissions inventory, and what business units were included in the carboNZero certification. Figure 2 (over page) shows what has been included in this inventory for the wine product measurement, in the context of the generic life cycle of wine products. The life cycle stages in yellow were not included in inventory.

---

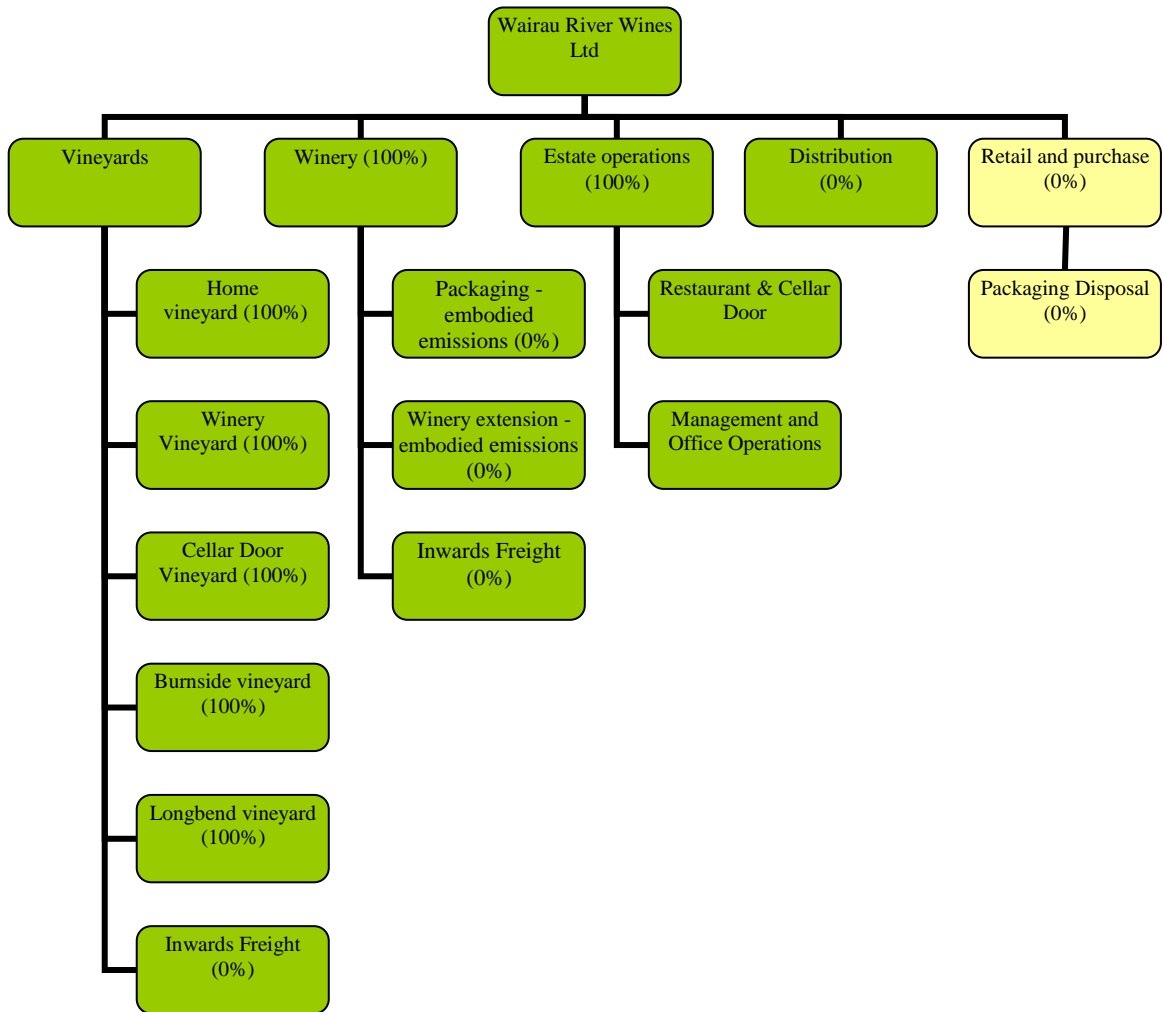
<sup>1</sup> **Disclaimer:** This Disclosure Statement is a summary of the verified information considered for certification and the certification decision. It should not be taken to represent the full submission for certification. While every effort has been made to ensure that the information in this Disclosure Statement is accurate and complete, Landcare Research does not, to the maximum extent permitted by law, give any warranty or guarantee relating to the accuracy or reliability of the information.

<sup>2</sup> Wairau River Wines, Sunshine Bay, Plane Tree Estate, Longbend, Vintage Cellars, Robinsons, Three Kings, Martins Rake, Origin Reserve, Dyed In the Wool, Australian Wine Society.

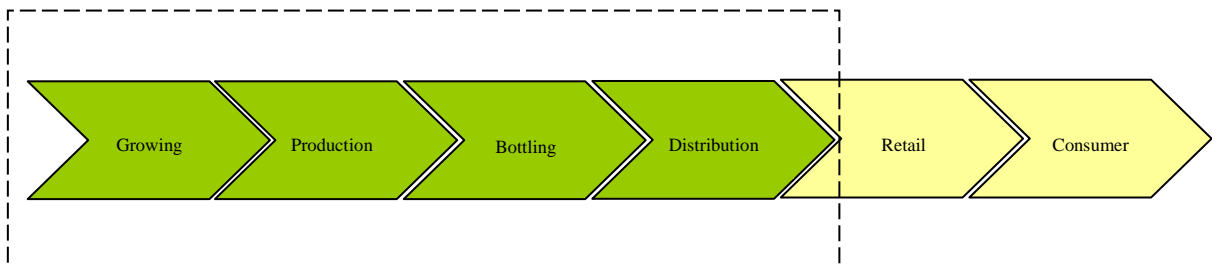
# Summary of carbonZero certification:



## Wairau River Wines Limited



**Figure 1:** The organisational boundary for Wairau River Wines. Business units in yellow were excluded from the GHG inventory.



**Figure 2:** The life cycle product boundary for Wairau River Wines. Life cycle stages in yellow were excluded from the GHG inventory.

**Consolidation approach – operational control**

**Base year – 01/07/2006 to 30/6/2007**

## Summary of carbonZero certification:



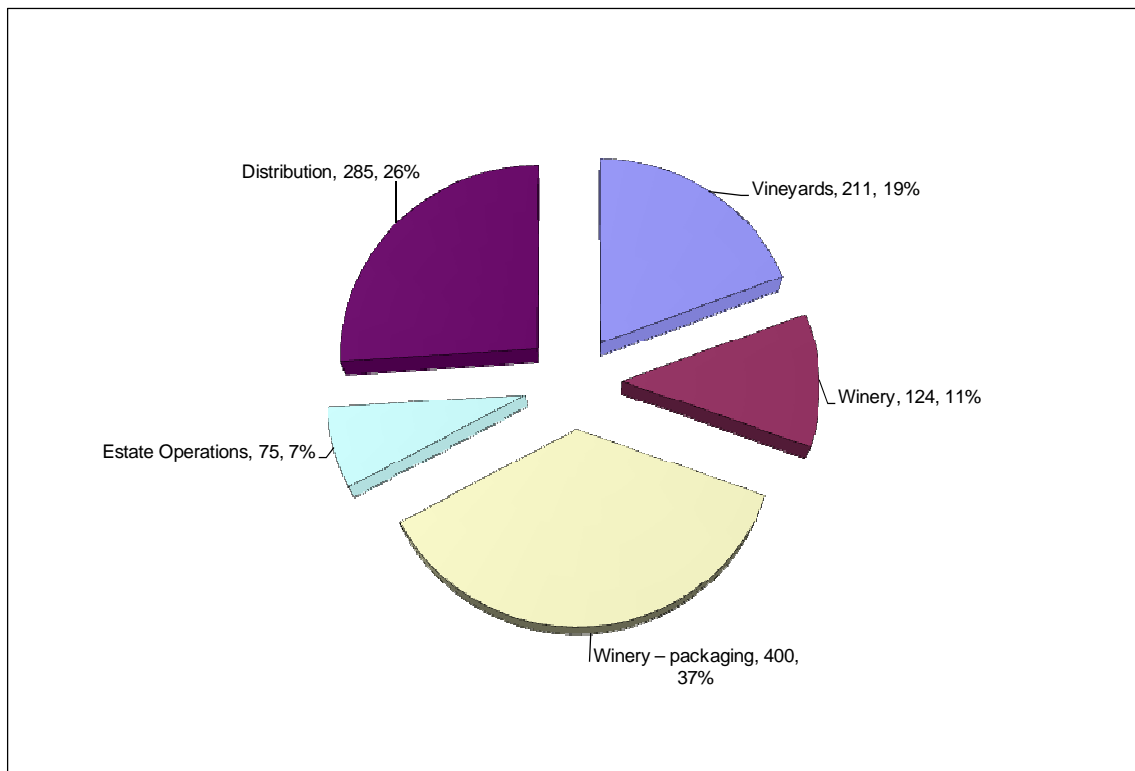
### Wairau River Wines Limited

**Measurement period** – 01/07/2009 to 30/6/2010

This is the measurement period for recertification.

**GHG emissions source inclusions** – The Wairau River Wines inventory reports use of diesel, petrol and LPG as Scope 1 operational emissions, electricity as Scope 2 operational emissions, and freight (international air, international and domestic shipping, rail and road), domestic and international air travel, and embodied emissions associated with the use of packaging as Scope 3 operational emissions.

**GHG emissions profile** – Wairau River Wines' total emissions for this period were 1094.34 tonnes carbon dioxide equivalents (CO<sub>2</sub>e) operational emissions. These operational emissions of Wairau River Wines comprised 184.58 tonnes CO<sub>2</sub>e Scope 1, 107.62 tonnes CO<sub>2</sub>e Scope 2 and 802.14 tonnes CO<sub>2</sub>e Scope 3 emissions. The diagram below shows operational GHG emissions for Wairau River Wines by business activity, expressed in terms of tonnes carbon dioxide equivalents (CO<sub>2</sub>e) and the percentage of total emissions.



**Figure 3:** The profile of operational GHG emissions for Wairau River Wines by business activity.

## Summary of carboNZero certification:



### Wairau River Wines Limited

**GHG emissions source exclusions** – The following emissions sources were excluded from the inventory:

- embodied emissions in machinery and plant purchased for the vineyards and winery (other than fermentation vessels), due to lack of component-specific activity data
- fermentation emissions, in line with international best practice
- embodied emissions of dry goods used in winemaking, due to lack of activity data
- Waste to landfill, due to estimated emissions being below the allowed *de minimis*
- Freight (road transport) for transport of goods to the estate restaurant, due to estimated emissions being below the allowed *de minimis*
- Emissions associated with the shipping of bulk wine to overseas destinations due to these emissions being outside the operational boundary of this inventory.
- Emissions associated with the retail, customer use and waste disposal at the end of life of the product, in line with international best practice

**GHG emissions reduction commitments** – Wairau River Wines has developed a GHG emissions reduction plan. Some projects in this plan include:

- To reduce the weight of glass bottles in future bottling
- To reduce winery electricity intensity, by considering efficiency of the refrigeration and hot water systems, winery lighting, and energy source during peak loadings
- To reduce diesel use in the vineyards by considering the efficiency of both the use of and the type of machinery used

**GHG emissions reduction report against last year's plan** – This is Wairau River Wines' fourth emissions inventory report. A comparison to the reporting periods of previous years shows that there was an overall increase (379 tonnes CO<sub>2</sub>e) in total operational emissions compared to the base year, and an increase of 231 tonnes CO<sub>2</sub>e to the previous year. Scope 3 emissions have continued to increase year on year, Scope 1 emissions have increased moderately from the base year, but Scope 2 emissions have decreased by 7% compared to the base year and 34% to the previous reporting period.

Highlights of production and emission source changes (compared to the previous year) are:

- Total tonnes harvested have decreased by 4%
- Total cases bottled has increased by 10%
- Total diesel vineyards business activity (litres) have increased by 8%
- Total Winery electricity (kWh) have decreased by 37%

Emissions intensity at the winery (tCO<sub>2</sub>e/tonnes grapes harvested) has decreased by 26% compared to the previous year; the intensity of winery electricity activity data (tCO<sub>2</sub>e /1,000 cases filled) has decreased by 47% compared to the previous year.

Whilst it also has been highlighted that there was a 10% increase in the total cases bottled from the previous reporting period, the emission intensity of the winery - packaging business unit (tCO<sub>2</sub>e /1000 cases filled) has decreased by 5%.

## Summary of carboNZero certification:



Wairau River Wines Limited

**Offset** – 1095 tonnes CO<sub>2</sub>e VERs<sup>3</sup> from PRE<sup>4</sup> Meridian windpower projects. Serial numbers 416613-417707 have been cancelled (or equivalent) on the Markit Environmental Registry.

**Verified by** – Verification NZ

**Threshold of materiality** – excluded emissions do not exceed 5% of the total footprint for organisation and product boundary stated.

**Level of assurance** – Reasonable assurance for organisation, limited assurance for product.

**Certification status** – carboNZero certified “organisation” and wine “products”

**Certificate number** – 2011006J

**Valid until** – 31 October 2013

Wairau River Wines Limited, Giffords Road, RD 3, Blenheim. Tel: +64 3 572 7950. Email: [lparkinson@wairauriverwines.com](mailto:lparkinson@wairauriverwines.com) Web: <http://www.wairauriverwines.com/index.htm>

---

<sup>3</sup> VERs are created by eligible projects for emissions reductions achieved up to the end of 2007.

<sup>4</sup> PRE - Projects to Reduce Emissions is a New Zealand government scheme for projects that are eligible under the Joint Implementation initiative of the Kyoto Protocol – see [www.mfe.govt.nz](http://www.mfe.govt.nz)

## Summary of carboNZero certification:



### Wairau River Wines Limited

*Wairau River Wines Limited meets the requirements of carboNZero<sup>Cert</sup>™ certification having measured its greenhouse gas emissions in compliance with the requirements of ISO 14064-1:2006 including additional life cycle emissions associated with all wine products, committed to managing and reducing its emissions and neutralised its remaining unavoidable emissions through the cancellation of an appropriate number of verified carbon credits in respect of its organisation and wine products.*



WAIRAU RIVER WINES  
FAMILY ESTATE SINCE 1978

**Introduction<sup>1</sup>** – Wairau River Wines is a privately owned family wine estate established in 1978 by Phil & Chris Rose. The estate is located in the Rapaura district of the Wairau Valley in Marlborough, New Zealand. Wairau River Wines owns five estate vineyards, a winery that was built in 2002, and a restaurant/cellar door. Wairau River Wines has 11 brands<sup>2</sup>. Their flagship wine is Sauvignon Blanc, while the rest of the portfolio comprises Pinot Gris, Riesling, Gewürztraminer, Chardonnay and Pinot Noir. They employ 18 full-time staff.

**Boundary** – Figure 1 (over page) shows the organisational boundary used for describing Wairau River Wines' greenhouse gas (GHG) emissions inventory, and what business units were included in the carboNZero certification. Figure 2 (over page) shows what has been included in this inventory for the wine product measurement, in the context of the generic life cycle of wine products. The life cycle stages in yellow were not included in inventory.

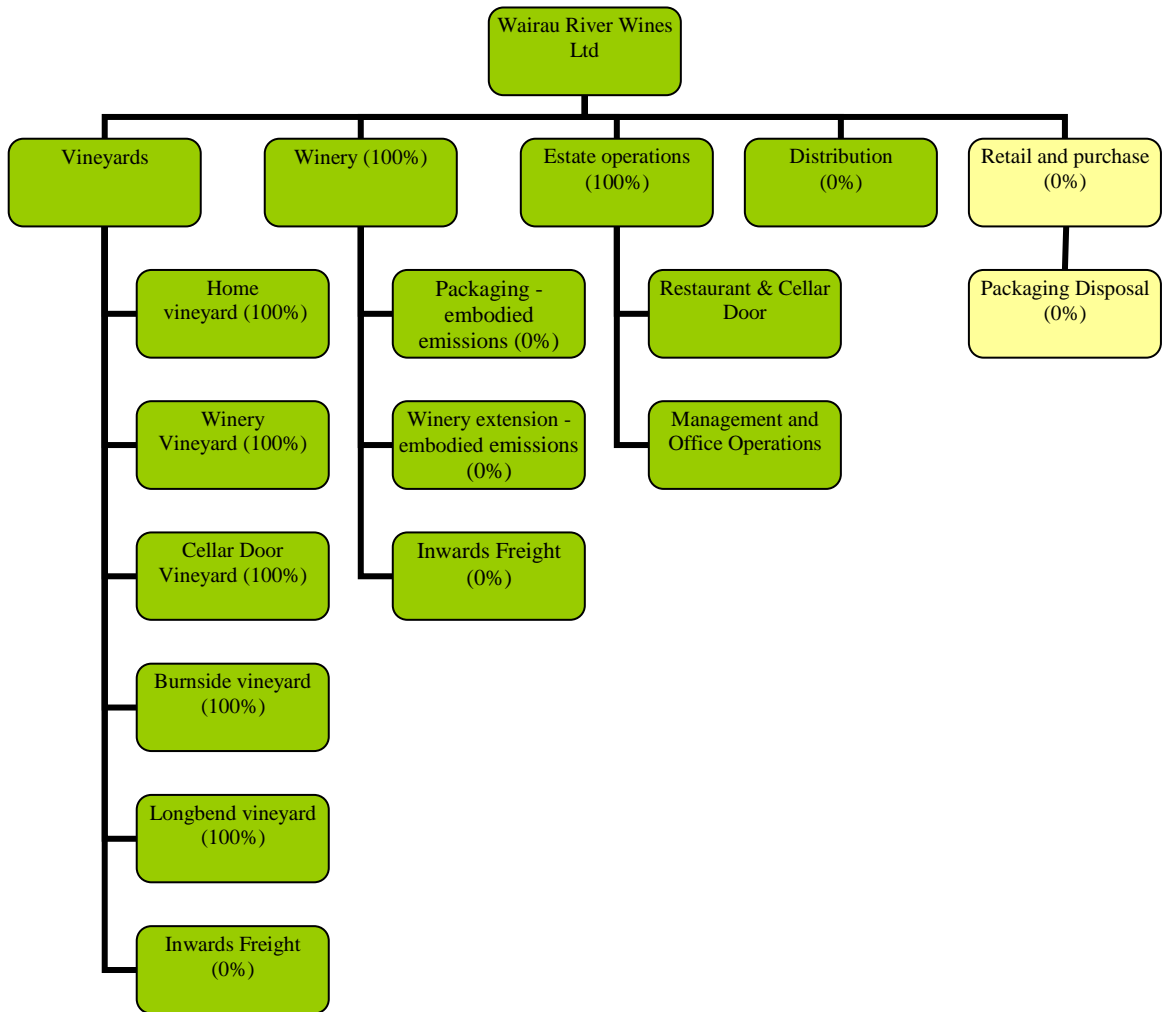
---

<sup>1</sup> **Disclaimer:** This Disclosure Statement is a summary of the verified information considered for certification and the certification decision. It should not be taken to represent the full submission for certification. While every effort has been made to ensure that the information in this Disclosure Statement is accurate and complete, Landcare Research does not, to the maximum extent permitted by law, give any warranty or guarantee relating to the accuracy or reliability of the information.

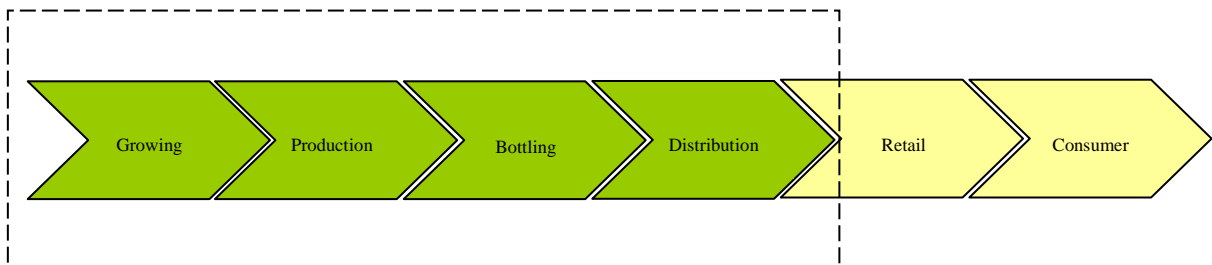
<sup>2</sup> Wairau River Wines, Sunshine Bay, Plane Tree Estate, Longbend, Vintage Cellars, Robinsons, Three Kings, Martins Rake, Origin Reserve, Dyed In the Wool, Australian Wine Society.

# Summary of carbonZero certification:

## Wairau River Wines Limited



**Figure 1:** The organisational boundary for Wairau River Wines. Business units in yellow were excluded from the GHG inventory.



**Figure 2:** The life cycle product boundary for Wairau River Wines. Life cycle stages in yellow were excluded from the GHG inventory.

**Consolidation approach** – operational control

**Base year** – 01/07/2006 to 30/6/2007

## Summary of carbonZero certification:



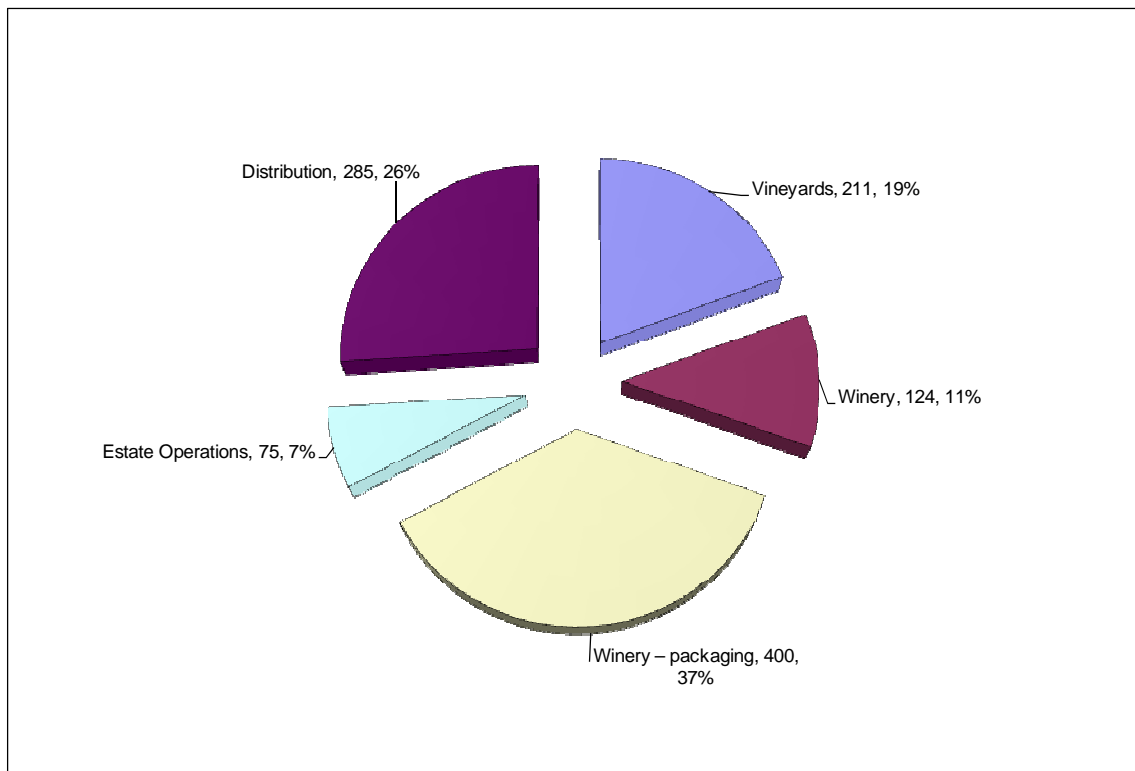
### Wairau River Wines Limited

**Measurement period** – 01/07/2009 to 30/6/2010

This is the measurement period for recertification.

**GHG emissions source inclusions** – The Wairau River Wines inventory reports use of diesel, petrol and LPG as Scope 1 operational emissions, electricity as Scope 2 operational emissions, and freight (international air, international and domestic shipping, rail and road), domestic and international air travel, and embodied emissions associated with the use of packaging as Scope 3 operational emissions.

**GHG emissions profile** – Wairau River Wines' total emissions for this period were 1094.34 tonnes carbon dioxide equivalents (CO<sub>2</sub>e) operational emissions. These operational emissions of Wairau River Wines comprised 184.58 tonnes CO<sub>2</sub>e Scope 1, 107.62 tonnes CO<sub>2</sub>e Scope 2 and 802.14 tonnes CO<sub>2</sub>e Scope 3 emissions. The diagram below shows operational GHG emissions for Wairau River Wines by business activity, expressed in terms of tonnes carbon dioxide equivalents (CO<sub>2</sub>e) and the percentage of total emissions.



**Figure 3:** The profile of operational GHG emissions for Wairau River Wines by business activity.

## Summary of carboNZero certification:



### Wairau River Wines Limited

**GHG emissions source exclusions** – The following emissions sources were excluded from the inventory:

- embodied emissions in machinery and plant purchased for the vineyards and winery (other than fermentation vessels), due to lack of component-specific activity data
- fermentation emissions, in line with international best practice
- embodied emissions of dry goods used in winemaking, due to lack of activity data
- Waste to landfill, due to estimated emissions being below the allowed *de minimis*
- Freight (road transport) for transport of goods to the estate restaurant, due to estimated emissions being below the allowed *de minimis*
- Emissions associated with the shipping of bulk wine to overseas destinations due to these emissions being outside the operational boundary of this inventory.
- Emissions associated with the retail, customer use and waste disposal at the end of life of the product, in line with international best practice

**GHG emissions reduction commitments** – Wairau River Wines has developed a GHG emissions reduction plan. Some projects in this plan include:

- To reduce the weight of glass bottles in future bottling
- To reduce winery electricity intensity, by considering efficiency of the refrigeration and hot water systems, winery lighting, and energy source during peak loadings
- To reduce diesel use in the vineyards by considering the efficiency of both the use of and the type of machinery used

**GHG emissions reduction report against last year's plan** – This is Wairau River Wines' fourth emissions inventory report. A comparison to the reporting periods of previous years shows that there was an overall increase (379 tonnes CO<sub>2</sub>e) in total operational emissions compared to the base year, and an increase of 231 tonnes CO<sub>2</sub>e to the previous year. Scope 3 emissions have continued to increase year on year, Scope 1 emissions have increased moderately from the base year, but Scope 2 emissions have decreased by 7% compared to the base year and 34% to the previous reporting period.

Highlights of production and emission source changes (compared to the previous year) are:

- Total tonnes harvested have decreased by 4%
- Total cases bottled has increased by 10%
- Total diesel vineyards business activity (litres) have increased by 8%
- Total Winery electricity (kWh) have decreased by 37%

Emissions intensity at the winery (tCO<sub>2</sub>e/tonnes grapes harvested) has decreased by 26% compared to the previous year; the intensity of winery electricity activity data (tCO<sub>2</sub>e /1,000 cases filled) has decreased by 47% compared to the previous year.

Whilst it also has been highlighted that there was a 10% increase in the total cases bottled from the previous reporting period, the emission intensity of the winery - packaging business unit (tCO<sub>2</sub>e /1000 cases filled) has decreased by 5%.

## Summary of carboNZero certification:



Wairau River Wines Limited

**Offset** – 1095 tonnes CO<sub>2</sub>e VERs<sup>3</sup> from PRE<sup>4</sup> Meridian windpower projects. Serial numbers 416613-417707 have been cancelled (or equivalent) on the Markit Environmental Registry.

**Verified by** – Verification NZ

**Threshold of materiality** – excluded emissions do not exceed 5% of the total footprint for organisation and product boundary stated.

**Level of assurance** – Reasonable assurance for organisation, limited assurance for product.

**Certification status** – carboNZero certified “organisation” and wine “products”

**Certificate number** – 2011006J

**Valid until** – 31 October 2013

Wairau River Wines Limited, Giffords Road, RD 3, Blenheim. Tel: +64 3 572 7950. Email: [lparkinson@wairauriverwines.com](mailto:lparkinson@wairauriverwines.com) Web: <http://www.wairauriverwines.com/index.htm>

---

<sup>3</sup> VERs are created by eligible projects for emissions reductions achieved up to the end of 2007.

<sup>4</sup> PRE - Projects to Reduce Emissions is a New Zealand government scheme for projects that are eligible under the Joint Implementation initiative of the Kyoto Protocol – see [www.mfe.govt.nz](http://www.mfe.govt.nz)