

## Summary of CEMARS certification:

### Villa Maria Estate Limited



*Villa Maria Estate Limited meets the requirements of the CEMARS™ certification having measured its greenhouse gas emissions compliance with ISO 14064-:2006 and committed to reducing its emissions in respect of the operational activities of its organisation excluding overseas retail and distribution.*



VILLA MARIA  
ESTATE

**Introduction<sup>1</sup>** – Villa Maria Estate Limited was founded in 1961 in Auckland and is New Zealand’s most awarded winery. The Auckland winery was opened in 2005 and hosts Villa Maria Estate Limited’s head office, bottling facility, conference and events centre and cellar door. Internationally acclaimed wine is produced from grapes grown in New Zealand’s main grape growing regions, with owned vineyards in Marlborough, Hawkes Bay, Gisborne and Auckland. Grapes are also sourced from contract growers. Villa Maria Estate Limited distributes wine throughout New Zealand as well as Europe, North America, Australia, Asia and the Caribbean and Pacific Islands.

Villa Maria Estate Limited has a long held objective to be environmentally responsible and to operate using sustainable practices. Villa Maria Estate Limited has been a member of Sustainable Winegrowing New Zealand (SWNZ) since its inception in 1995. Each year, Villa Maria Estate Limited is audited by SWNZ to provide a key platform for continuous improvement. All Villa Maria Estate Limited company vineyards and winery sites are either accredited by SWNZ or in the case of new sites, in the process of gaining accreditation.

In addition to SWNZ, all Villa Maria Estate Limited 's wineries are compliant with the environmental management system - ISO14001. Villa Maria Estate Limited is committed to continuing along the path of sustainability.

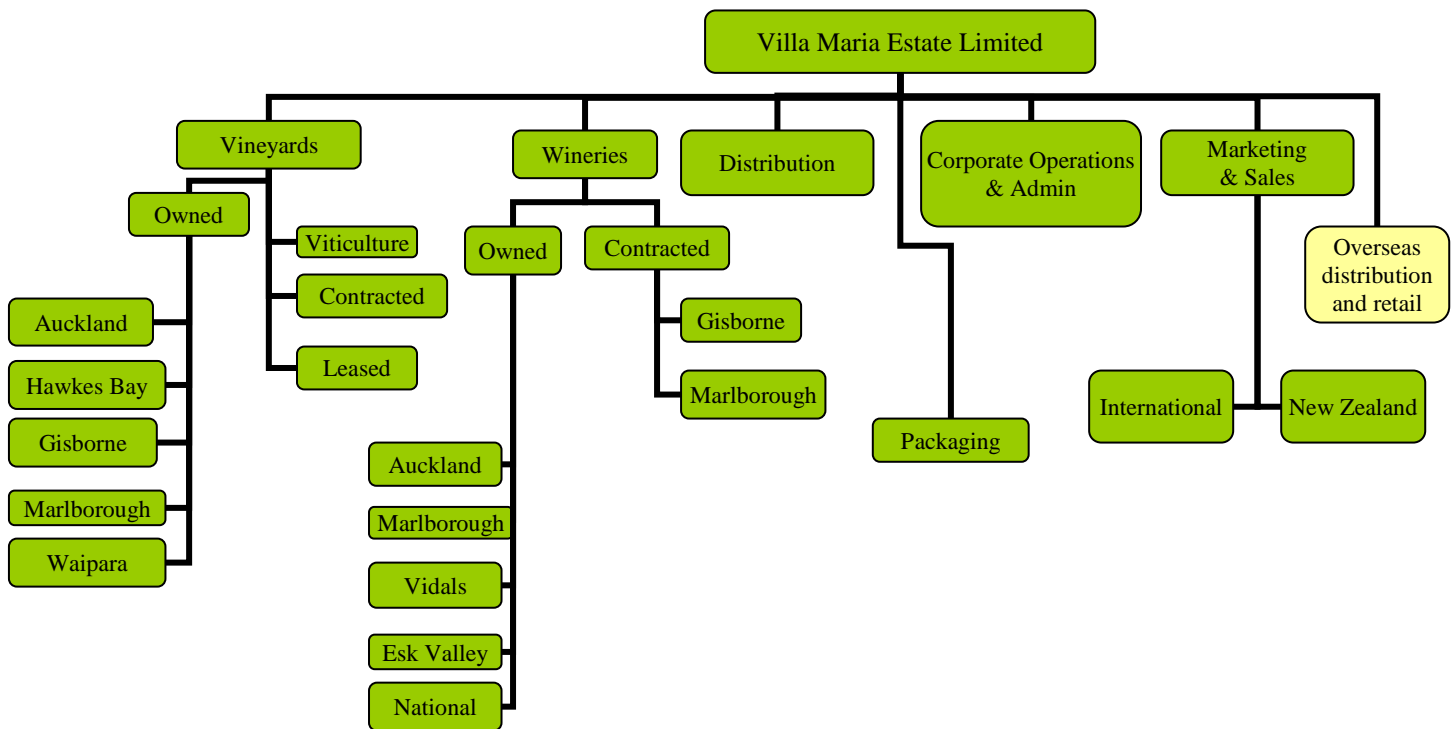
**Boundary** – the diagram below shows the organisational structure used for describing Villa Maria Estate Limited’s greenhouse gas (GHG) emissions inventory, and what business units were included in the CEMARS certification. Yellow business units were excluded from the certification.

---

<sup>1</sup> **Disclaimer:** This Disclosure Statement is a summary of the verified information considered for certification and the certification decision. It should not be taken to represent the full submission for certification. While every effort has been made to ensure that the information in this Disclosure Statement is accurate and complete, Landcare Research does not, to the maximum extent permitted by law, give any warranty or guarantee relating to the accuracy or reliability of the information.

# Summary of CEMARS certification:

## Villa Maria Estate Limited



**Consolidation approach** – operational control

**Base year** – 01/06/2008 to 31/05/2009

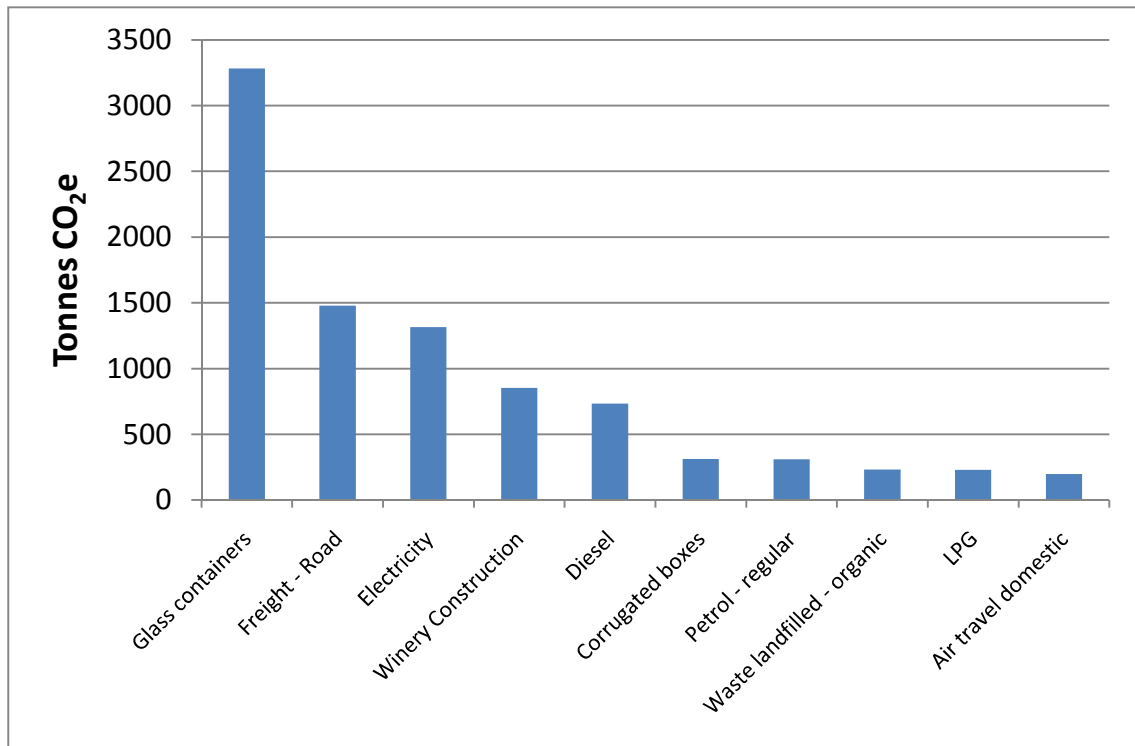
**Measurement period** – 01/06/2008 to 31/05/2009

**GHG emissions source inclusions** – the diagram below shows the operational GHG emissions for Villa Maria Estate Limited by emissions source. Villa Maria Estate Limited's total emissions for this period were 9509.31 tonnes carbon dioxide equivalents (CO<sub>2</sub>e) comprising 897.00 tonnes CO<sub>2</sub>e Scope 1, 1161.18 tonnes CO<sub>2</sub>e Scope 2 and 6597.36 tonnes CO<sub>2</sub>e Scope 3 emissions, there was also 853.77 tonnes CO<sub>2</sub>e one-off emissions from the Marlborough winery construction.

## Summary of CEMARS certification:



### Villa Maria Estate Limited



**GHG emissions source exclusions** – CO<sub>2</sub> gas used in the winery and organic waste from wine making was excluded due to lack of data on quantities produced. Materials used in Contract Bottling at Auckland were excluded as this was paid and provided by 3<sup>rd</sup> Parties. Some GHG emission sources were excluded as they are not required for an organisational footprint, this included embodied emissions in fertilisers used and freight of goods after leaving New Zealand ports.

**GHG emissions reduction commitments** – Villa Maria Estate Limited has developed a GHG emissions reduction plan. Some projects in this plan include:

- Reduce emission intensity for wine bottled in glass containers
- Review mode of transportation used for freight
- Minimise use of refrigerants in wineries
- Review purchasing of new vehicle fleet

**Verified by** – Verification NZ

**Threshold of materiality** – excluded emissions do not exceed 5% of the total footprint for organisation and product boundary stated.

**Level of assurance** – reasonable assurance; with one-off winery construction emissions verified to limited assurance

**Certification status** – CEMARS certified “organisation”

**Certificate number** – 2010015J

## Summary of CEMARS certification:



### Villa Maria Estate Limited

Valid until – 31<sup>st</sup> August 2010

---

**FACTS FOUND AFTER VERIFICATION** – further information was discovered post-audit that has required a recalculation of the base year inventory.

	Original tCO <sub>2</sub> e	Corrected tCO <sub>2</sub> e
Aluminium Caps	0.369424	369.42008
CO <sub>2</sub> - winery gases	0	547.075
RORO ferry freight	15.43531494	297.1364667

The impact on the overall emissions is summarised in the Table below:

	Verified	Revised
Scope 1	897.00	1,444.07
Scope 2	1,161.18	1,161.18
Scope 3	7,451.13	8,101.88
<b>Revised TOTAL</b>	<b>9,509.31</b>	<b>10,707.14</b>