

# Summary of carboNZero certification Pitango Innovative Cuisine Ltd



*“Pitango Innovative Cuisine Limited meets the requirements of the carboNZero<sup>CertTM</sup> certification having measured and reduced its greenhouse gas emissions and mitigated its remaining unavoidable emissions in respect of its organisation and products<sup>1</sup> including: transport and embodied emissions of ingredients, product packaging, and electricity used by refrigeration units (controlled by Pitango) in retail stores.”*



**Introduction<sup>2</sup>** – Pitango Innovative Cuisine Limited (Pitango) manufactures a range of ready to eat premium fresh organic food products. These products are available in the chilled food section of supermarkets, and are distributed throughout New Zealand and to Australia, Hong Kong and Canada. Raw ingredients are sourced from organic growers and suppliers of organic food from New Zealand and from other parts of the world. Food products are manufactured and packaged at Pitango’s site in Mairangi Bay, Auckland.

Actions taken by Pitango to reduce their greenhouse gas (GHG) emissions includes the introduction of a company wide educational programme to increase staff awareness of Pitango’s policy to reduce, reuse and recycle.

Pitango is committed to manage and reduce their environmental impacts and encourages their suppliers and distributors to do likewise.

**Boundary** – Figure 1 shows what has been included in the context of the entire organisation profile. The parts of the structure (business units) in green have been identified as being within this emissions inventory. The parts of the structure (business units) in yellow have been identified as being excluded from the inventory. The percentage figures indicate the level of ownership by Pitango. Measure boundaries of Figure 2 show that all emissions from ingredients up to distribution are included. Most other emissions related to retailers, consumption, and disposal are excluded except from emissions related to in-store refrigeration units that are controlled by Pitango.

---

<sup>1</sup> This certification covers the existing product range listed here and new products created during the period certified – these will be listed as they are created: Blueberry & Vanilla Porridge, Chicken & Garlic Risotto, Feta, Basil & Tomato Risotto, FR Butter Chicken Curry, FR Thai Chicken Curry, Honey & Apricot Porridge, Organic Lamb & Pumpkin Curry, Organic Moroccan, Chickpea Tagi, Organic Vegetable Korma Curry, Penne Pasta Mushroom, Penne Pasta with Tom & Feta, Pitango Gazpacho Summer Soup, Pitango Indian Vegetable Soup, Pitango Malaysian Laksa Soup, Pitango Minestrone Soup, Pitango Moroccan Chicken Soup, Pitango Pumpkin & Ginger Soup, Pitango Spring Lamb Soup, Pitango Tomato Soup, Pumpkin, Leek & Spinach Risotto, Salmon, Dill & Pumpkin Risotto, Pitango Carrot, Chilli & Corriander

<sup>2</sup> **Disclaimer:** This Disclosure Statement is a summary of the verified information considered for certification and the certification decision. It should not be taken to represent the full submission for certification. While every effort has been made to ensure that the information in this Disclosure Statement is accurate and complete, Landcare Research does not, to the maximum extent permitted by law, give any warranty or guarantee relating to the accuracy or reliability of the information.

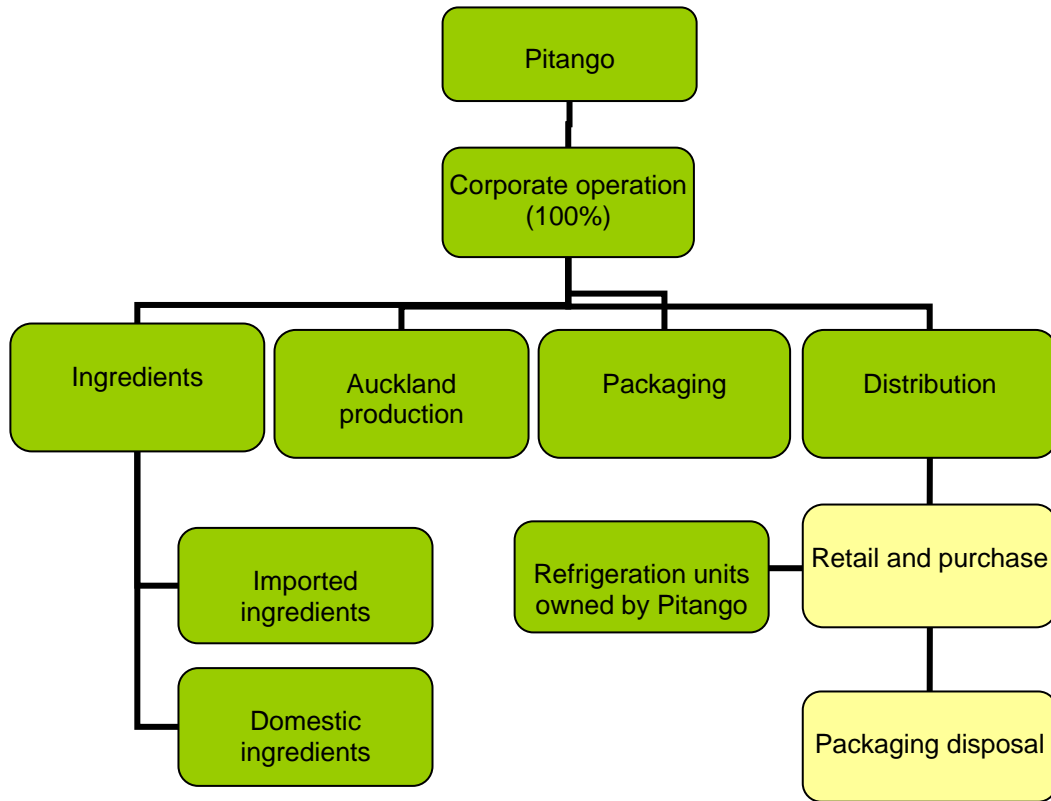


Figure 1: Pitango organisational structure.

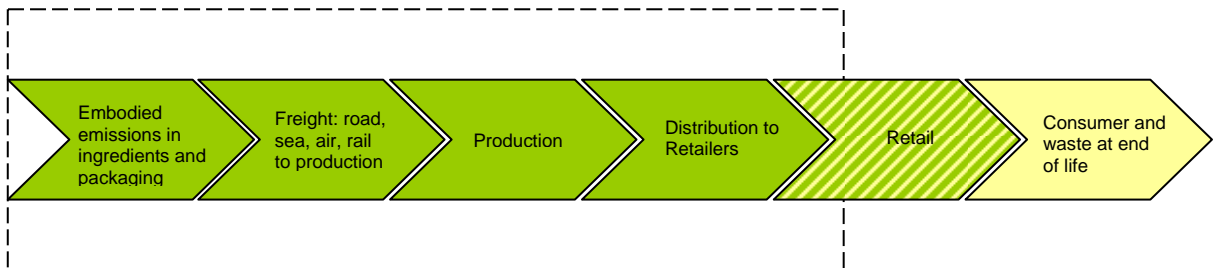


Figure 2: Boundary for Pitango's products.

**Consolidation approach** – Operational control

**Base year** – 01/04/2006 to 31/03/2007

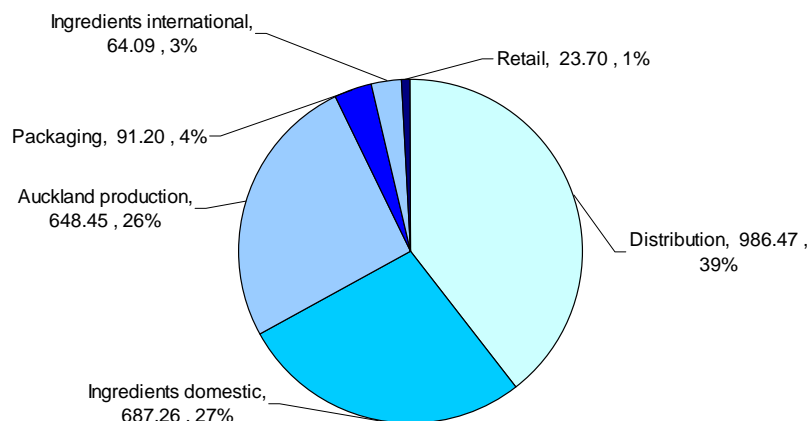
**Measurement period** – 01/04/2008 to 30/06/2009

**GHG emissions source inclusions** – the diagram below shows the operational GHG emissions for Pitango by emissions source. Pitango's total emissions for this

# Summary of carboNZero certification Pitango Innovative Cuisine Ltd



period were 2,598.53 tonnes carbon dioxide equivalents (CO<sub>2</sub>e) comprising 350.52 tonnes CO<sub>2</sub>e Scope 1, 85.75 tonnes CO<sub>2</sub>e Scope 2 and 2,162.27 tonnes CO<sub>2</sub>e Scope 3 emissions. Pitango's emissions are 1,830.83 tCO<sub>2</sub>e from organisational GHG emissions, 760.03 tCO<sub>2</sub>e additional LCA GHG emissions and 7.67 tCO<sub>2</sub>e one-off GHG emissions from a new chiller unit.



**Figure 3:** GHG emissions by source.

**GHG emissions source exclusions** – Emissions associated with 'Retail and Purchase', such as inter-store transport and logistics, store energy use, consumer travel to and from the retail outlet, have been excluded from the GHG emissions inventory. Also excluded are the disposal emissions including emissions associated with transporting the packaging to its disposal point, and the emissions associated with the disposal itself e.g. landfill gas emissions at retail and at the end of the life of the product. Most of the transit packaging; however, can be recycled. It has been assumed that the retailers will recycle this appropriately.

Emissions from the 'Retail and Purchase' and 'Packaging Disposal' are excluded from the emissions boundary because they are considered to be outside of Pitango's operational control and influence. It is impractical to collect this data and the methodology for measuring these emissions has not yet been agreed by the research community and standards bodies. These emissions are assumed to be insignificant compared with the total emissions profile for Pitango. Retail emissions from electricity use of refrigeration units controlled by Pitango are, however, included.

Staff commuting and international freight beyond destination on shipping note is believed to be outside Pitango's operational control and has been excluded.

Wastewater and fugitive emissions of HFCs by Pitango, in-store, controlled refrigerators were estimated to be de minimis,

**GHG emissions reduction commitments** – Pitango has developed a GHG emissions reduction plan. Some projects in this plan include:

## Summary of carboNZero certification Pitango Innovative Cuisine Ltd



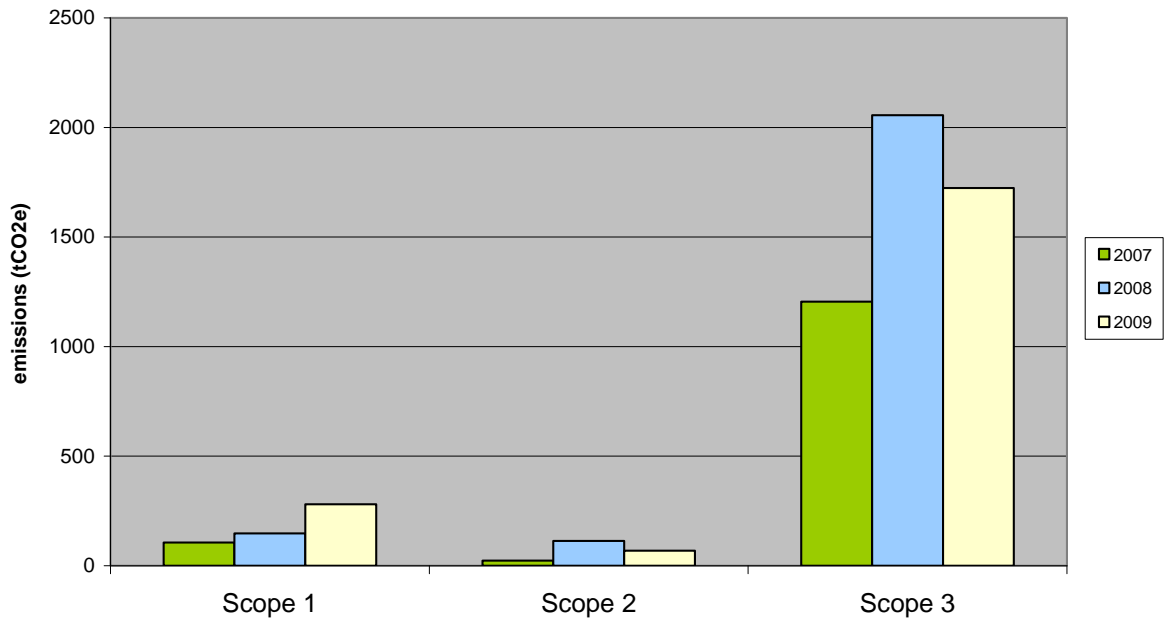
- Maximise sea freight container space to ensure all containers are as close to maximum weight as possible
- Improve communication with suppliers and customers on the importance of being carboNZero. Encourage invoices to be sent electronically to Pitango and from Pitango to customers to reduce paper waste.
- Reduce electricity emissions in production facility. An educational programme to be implemented companywide to increase staff awareness. Actions to reduce electricity emissions will be on the agenda of monthly meetings, encouraging staff input. Emissions from electricity will be reduced by 5% by March 2010.
- Investigate ways to reduce amount of organic vegetable waste put into landfill.
- Actively source a pouch supplier who can produce pouches that are recyclable, but still meet our production specifications (i.e. microwaveable).

**GHG emissions reduction report against last year's plan** – This is Pitango's third year of measuring their GHG emissions. Due to a change in measure period the the period covered is from 01/04/2008 to 30/06/2009. To be able to compare previous inventories with this one, the total GHG emissions of 15 months were multiplied by 0.8 to use the equal time length of 12 months. In this section, all emissions are stated for 12 months to be able to compare them with previous figures.

The total GHG emissions were 2,072.70 tCO<sub>2</sub>e, compared to a total of 2,316.69 tCO<sub>2</sub>e for the second inventory period 01/04/2007 to 31/03/2008. This is a decrease of 243.99 tCO<sub>2</sub>e (23%).

Figure 4 shows that Pitango's GHG emissions of Scope 1 have increased by 90%. Scope 2 and 3 emissions decreased by 40% and 16%, respectively. The total increase in Scope 1 emissions is from 147.47 to 280.41 tCO<sub>2</sub>e. Scope 2 emissions (purchased electricity) decreased from 113.40 to 68.60 tCO<sub>2</sub>e, where 9% of this decrease was linked to a decrease in emissions intensity of electricity, caused by the result of a wet winter i.e. more hydropower generation. Scope 3 emissions decreased from 2,055.82 to 1,723.69 tCO<sub>2</sub>e. There has been a substantial decrease in emissions-causing activities in Pitango's operations. Pitango has reduced the mass-distance (tkm) of air freight by 39%.

# Summary of carboNZero certification Pitango Innovative Cuisine Ltd



**Figure 4:** Comparison of GHG emissions by scope between the reporting periods.

**Offset** – 2,749 tonnes CO<sub>2</sub>e. Gold Standard certified VERs generated by the Meridian Energy White Hill windfarm project. Serial numbers 400692 to 403440 have been cancelled (or equivalent) on the carboNZero programme register. 11.5 tonnes CO<sub>2</sub>e were not required to be offset due to use of carboNZero certified Meridian Energy electricity.

**Verified by** – Telarc SAI New Zealand.

**Threshold of materiality** – Excluded emissions do not exceed 5% of the total footprint for organisation and product boundary stated.

**Level of assurance** – Reasonable assurance for organisational emissions and limited assurance for the additional life cycle emissions

**Certification status** – carboNZero certified “organisation” and certified “products” covering Pitango’s organisational and additional life cycle GHG emissions (to the destination on the shipping note) associated with Pitango food products.

**Certificate number** – 2009089J

**Valid until** – 30 September 2010