

Summary of CEMARS[®] certification:



Palliser Estate Wines of Martinborough Limited

Year 2 of 3 Year Certificate Period

Palliser Estate Wines of Martinborough Limited meets the requirements of CEMARS[®] certification, having measured its greenhouse gas emissions in compliance with ISO 14064-1:2006 and committed to reducing its emissions in respect of the operational activities of its organisation including vineyards, the winery, contract bottling and non-free-on-board freight to destination on the shipping note.



PALLISER

Introduction¹ – Palliser Estate Wines of Martinborough Limited is a wine estate located in the Martinborough District of the Wairarapa, New Zealand.

Palliser Estate Wines' main varieties of Pinot Noir, Chardonnay, Riesling, Sauvignon Blanc and Pinot Gris are grown on six vineyards – Winery, Palliser, Pencarrow, Om Santi, Pinnacles and Clouston. Covering about 85 hectares in total, the vineyards are all on the renowned Martinborough Terrace, but have distinct differences in soil type and climate, which helps to add complexity to their wines. Palliser Estate Wines has a winery built in 1991 and expanded in 2002, a purpose-built, temperature-controlled barrel hall, and a cellar door. Palliser Estate Wines has an environmental policy that states it is committed to producing wines of the highest quality through environmentally sustainable practices. Palliser Estate Wines is also certified to the international environmental standard ISO 14001, is a member of the Sustainable Winegrowing scheme, which promotes (and audits for) economically and environmentally sustainable vineyard management. Each financial year, Palliser Estate Wines produce a triple bottom-line report, which covers their financial, social and environmental performance.

Boundary – Figure 1 below shows the organisational structure used for describing the organisation's greenhouse gas (GHG) emissions inventory, and what business units were included in the inventory in the context of the entire organisational profile. The parts of the structure (business units) in green have been identified as being within this emissions inventory. Business units excluded from the inventory are shown in yellow.

¹**Disclaimer:** This Disclosure Statement is a summary of the verified information considered for certification and the certification decision. It should not be taken to represent the full submission for certification. While every effort has been made to ensure that the information in this Disclosure Statement is accurate and complete, Landcare Research does not, to the maximum extent permitted by law, give any warranty or guarantee relating to the accuracy or reliability of the information.

Summary of CEMARS® certification:



Palliser Estate Wines of Martinborough Limited

Year 2 of 3 Year Certificate Period

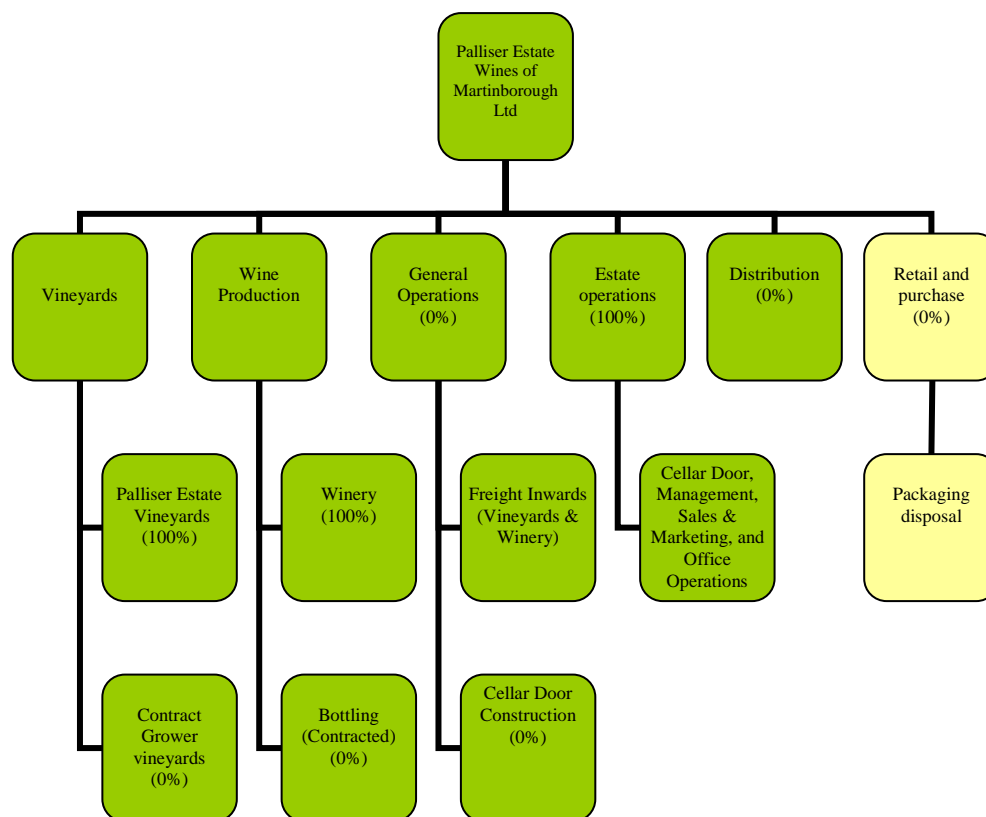


Figure 1: Organisational structure showing business units included and excluded.

Consolidation approach – The operational control consolidation approach has been used to account for operational emissions with reference to the methodology described in the GHG Protocol and ISO 14064-1 standards.

Base year – 01/07/2006 to 30/06/2007

Measurement period – 01/07/2010 to 30/06/2011

Emissions source inclusions – The operational GHG emissions for the organisation by emissions source are shown in Figure 2 below.

Summary of CEMARS® certification:



Palliser Estate Wines of Martinborough Limited

Year 2 of 3 Year Certificate Period

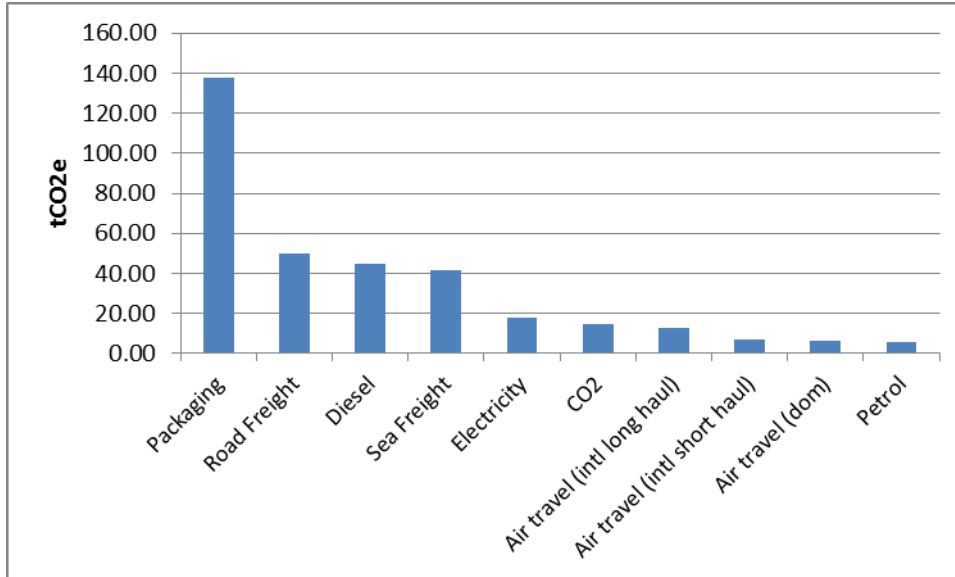


Figure 2: GHG emissions by emissions source.

Emissions as tonnes of carbon dioxide equivalents (tCO₂e) for this period were:

Scope 1:	51.13 tCO ₂ e
Scope 2:	16.71 tCO ₂ e
Scope 3:	141.80 tCO ₂ e
Scope 3 (Packaging):	137.82 tCO ₂ e
Total:	347.46 tCO ₂ e

Emissions source exclusions – The following emissions sources were excluded from the inventory for this measurement period: GHG emissions associated with the disposal of waste from the winery and the wine estate have been excluded for this period due to insufficient data availability. These emissions will be included in future reporting periods once appropriate data becomes available.

Emissions reduction commitments – A GHG emissions management plan and reduction targets have been developed.

Annual

1. Reduce our scope 1 & 2 GHG emissions by 5% (per hectare of producing land)
2. Reduce our total freight (in and out) by 2% (per case of wine produced)
3. Reduce our total packaging by 1% (per case of wine produced)

Long-term

1. Reduce our total GHG emissions to less than 300 tonnes of CO₂e by 2020 (based on similar volumes)
2. Achieve carbon neutrality

Summary of CEMARS[®] certification:



Palliser Estate Wines of Martinborough Limited

Year 2 of 3 Year Certificate Period

Emissions reductions summary –

Base year GHG emissions = 264.37 tCO₂e

GHG emissions calculated for this reporting period excluding packaging for consistency with base year) = 209.64 tCO₂e

Difference in GHG emissions = -54.73 tCO₂e

Additional comments or notes: This is the fifth year of reporting under CEMARS. Using a 5-year rolling average the organisation's overall emissions were 13.91 tCO₂e lower this year than in the base year (excluding packaging emissions; these were not included in the first two inventories).

Verified by – Verification New Zealand

Data quality score – High

Threshold of materiality – Excluded emissions do not exceed 5% of the total footprint for organisation stated.

Level of assurance – Reasonable

Certification status – CEMARS certified organisation.

Certificate number – 2011032J -Year 2

Valid until – 31 October 2013

Palliser Estate Wines of Martinborough Limited, Kitchener Street, Martinborough 5711, New Zealand.
Telephone: +64 6 306 9019. Email: pigg@palliser.co.nz Web: www.palliser.co.nz