

# Summary of CEMARS® certification:



## Giesen Wines Limited

*Giesen Wines Limited meets the requirements of CEMARS® certification having measured its greenhouse gas emissions in compliance with the requirements of ISO 14064-1:2006 and committed to managing and reducing its emissions in respect of the operational activities of its organisation including: Administration/Sales/Distribution, Vineyards, Contract Growers, Winery and Bottling Facilities but excluding Australian Sales Support within Giesen Wines Pty Ltd, Australia.*



**Introduction<sup>1</sup>** – Giesen Wines Limited is a proudly family owned business, established by the Giesen brothers in 1981. Early on the Giesen brothers recognised the potential of Marlborough Sauvignon Blanc and bought their first parcel of Marlborough land in 1993. Today Giesen Wines Limited own vineyards totalling 300 hectares scattered throughout the Wairau Valley. The company mission statement is to be New Zealand leaders in Marlborough Sauvignon Blanc with an emphasis on consistently high quality and character from vintage to vintage. Giesen Wines Limited also produces smaller volumes of Marlborough Chardonnay, Riesling, Pinot Gris and Pinot Noir.

Giesen Wines are divided into three main ranges, The Estate, The Brothers and The August. The Estate range offers classic and approachable fruit-driven wines, while The Brothers range is a special barrel selection of wines with rich flavours. The August is traditionally fermented to give a complex, multi-dimensional Sauvignon Blanc. Giesen Wines Limited also own the Marlborough Ridge, Dillons Point, Lofthouse, Smokestack and Chimney Creek labels. The South Island label is owned by and produced exclusively for Woolworths Australia.

Giesen Wines Limited have been a member of the Sustainable Winegrowing New Zealand (SWNZ) vineyard and winery programmes since 2009 and achieved BioGro certification in 2011. The management of Giesen Wines Limited are committed to ensuring the business operates in an environmentally sustainable manner. Measuring and communicating the company GHG emissions is a crucial step in understanding the climate change impact and determining where reduction efforts are best focussed. Becoming a certified member of CEMARS® will foster heightened awareness within the staff, as the company works towards annual reduction targets.

**Boundary** – the diagram below shows the organisational structure used for describing Giesen Wines Limited's greenhouse gas (GHG) emissions inventory, and what business units were included in the CEMARS® certification.

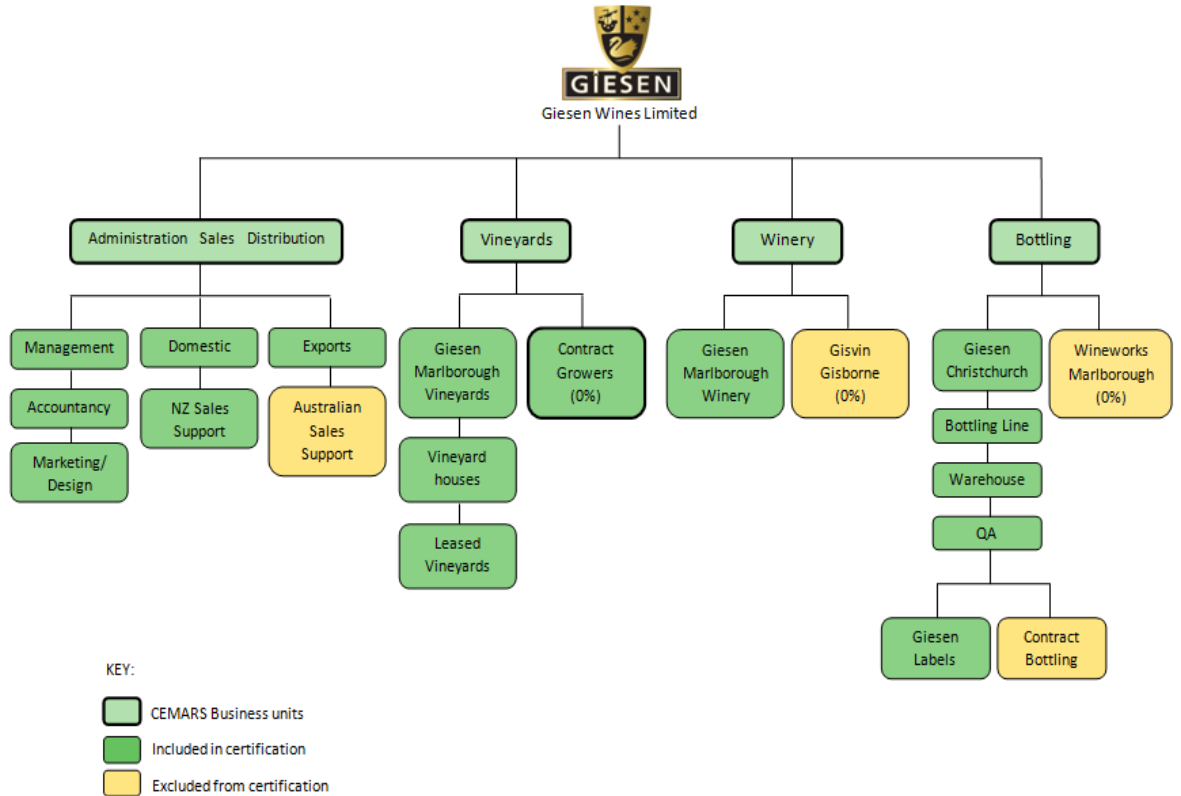
---

<sup>1</sup> **Disclaimer:** This Disclosure Statement is a summary of the verified information considered for certification and the certification decision. It should not be taken to represent the full submission for certification. While every effort has been made to ensure that the information in this Disclosure Statement is accurate and complete, Landcare Research does not, to the maximum extent permitted by law, give any warranty or guarantee relating to the accuracy or reliability of the information.

# Summary of CEMARS® certification:



## Giesen Wines Limited



**Consolidation approach** – Operational control

**Base year** – 01/07/2009 to 30/06/2010

**Measurement period** – 01/07/2009 to 30/06/2010

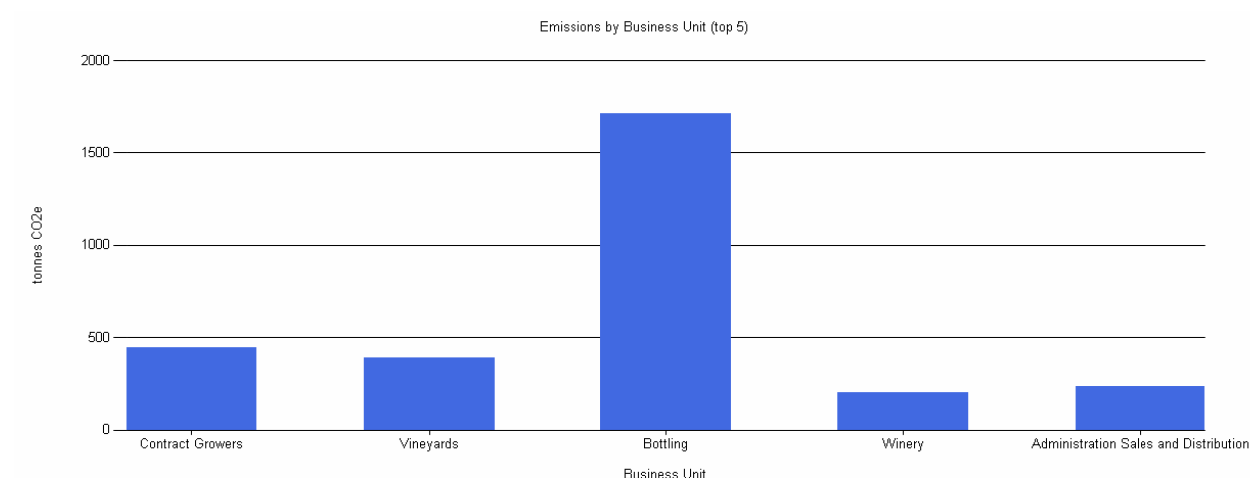
**Emissions source inclusions** – the diagram below shows the operational GHG emissions for Giesen Wines Limited by business activities. Giesen Wines Limited's total emissions for this period were 2981.21 tonnes carbon dioxide equivalents (tCO<sub>2</sub>e) comprising;

- 521.97 tonnes CO<sub>2</sub>e Scope 1 emissions
- 182.78 tonnes CO<sub>2</sub>e Scope 2 emissions
- 2,276.46 tonnes CO<sub>2</sub>e Scope 3 emissions

# Summary of CEMARS<sup>®</sup> certification:



## Giesen Wines Limited



**Emissions source exclusions** – Couriers greater than 2kg and energy consumption at conference venues by delegate days were not included due to insufficient data.

**Emissions reduction commitments** – Giesen Wines Limited has developed a GHG emissions reduction plan. Some projects in this plan include:

- Reduce total emissions intensity based on our KPIs by 3% by end of 2014/2015 financial year
- Create culture of innovation towards GHG reduction
- Investigate increased use of biological control in non organic vineyards
- Change from standard to lightweight bottles

**Verified by** – carbonZero Strategic Business Unit

**Threshold of materiality** – Excluded emissions do not exceed 5% of the total footprint for organisation stated.

**Level of assurance** – Limited

**Certification status** – CEMARS certified “organisation”

**Certificate number** – 2011112J

**Valid until** – 31 October 2013

Giesen Wines Limited, 272 Main South Road, Christchurch 8042, New Zealand. Telephone: +64 (0) 3 344 6270. Email: [grant@giesen.co.nz](mailto:grant@giesen.co.nz) Web: [www.giesen.co.nz](http://www.giesen.co.nz)