

Summary of CEMARS certification:



Viña Cono Sur S.A

Viña Cono Sur S.A. meets the requirements of CEMARS™ certification having measured its greenhouse gas emissions in compliance with the requirements of ISO 14064-1:2006 and committed to managing and reducing its emissions in respect of the operational activities of its organisation including the Santiago office, winery and six vineyards (Santa Elisa, San Rafael, Peralillo (Las Lomas, Las Lomitas, Las Hijuelas), Campo Lindo, La Espuela and El Centinela) and excluding its sales offices in the United Kingdom and Asia.



Introduction¹ – Viña Cono Sur S.A (Cono Sur) was founded in 1993, with the vision of producing premium, expressive and innovative wines conveying the spirit of the New World. Their name refers to the company’s geographic position; it represents wines proudly made in South America’s Southern Cone, on whose western edge lies Chile and its gifted wine valleys. Their logo also evokes a freehand drawing of the silhouette of South America.

Viña Cono Sur’s quest is to present the world with the finest grape expression and character, from Chile’s varied wine regions. Right from the start Viña Cono Sur applied the newest ideas and technology to winemaking’s traditional methods. Viña Cono Sur’s main goal, therefore, is to create expressive and innovative wines from one of the world’s southernmost wine regions.

Since its conception, Viña Cono Sur has been deeply committed to the development of its environmental policies, believing that high quality wine production can work hand-in-hand with eco friendly practices.

Implementation of an environment action plan has been the winery’s challenge in its global environmental project.

Viña Cono Sur began natural and integrated vineyard management in 1998. In 2000 an organic farming program started on 40 hectares of the Chimbarongo estate. In 2002 the company achieved double ISO Certification; ISO9001 and ISO14001. In 2007 new varieties of grapes were incorporated into the organic program. In the same year CarbonNeutral® delivery status was achieved for the CO₂ emissions for all freight to market.

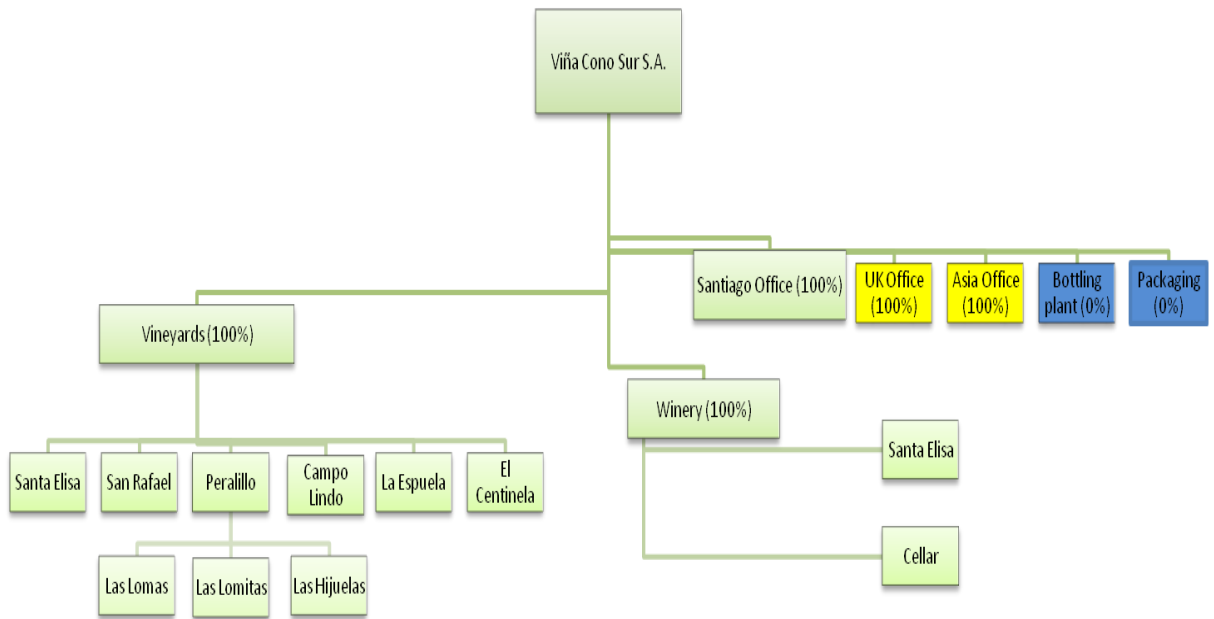
¹ **Disclaimer:** This Disclosure Statement is a summary of the verified information considered for certification and the certification decision. It should not be taken to represent the full submission for certification. While every effort has been made to ensure that the information in this Disclosure Statement is accurate and complete, Landcare Research does not, to the maximum extent permitted by law, give any warranty or guarantee relating to the accuracy or reliability of the information.

Summary of CEMARS certification:



Viña Cono Sur S.A

Boundary – the diagram below shows the organisational structure used for describing Cono Sur’s greenhouse gas (GHG) emissions inventory, and what business units were included in the carbonZero certification. Blue business units are not owned by Cono Sur but have been included in the inventory. Yellow business units were excluded from the certification. The boundary has been geographically set to include only Chilean operations.



Consolidation approach – Operational control

Base year – 01/06/2008 to 31/05/2009

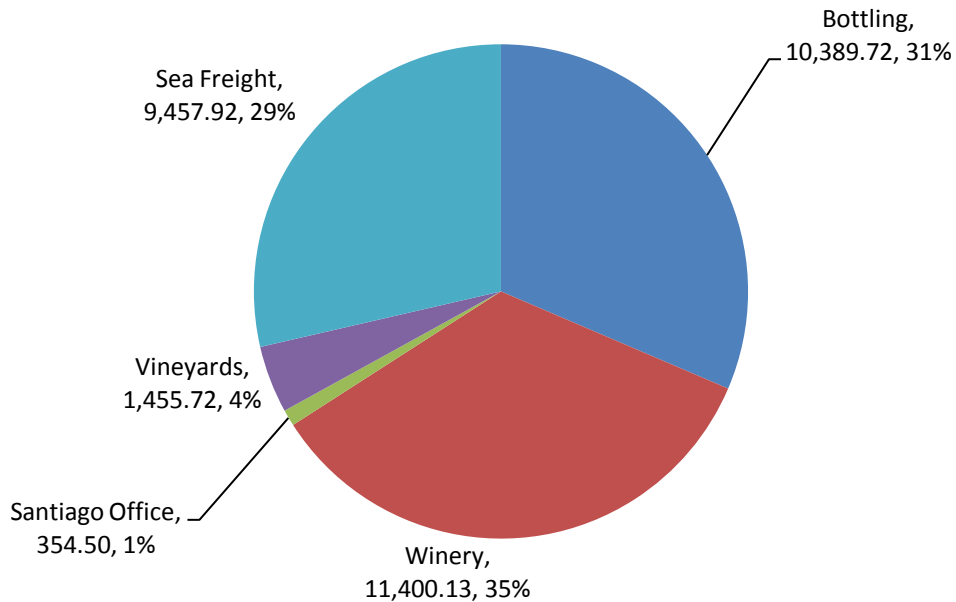
Measurement period – 01/06/2009 to 31/05/2010

Emissions source inclusions – the diagram below shows the operational GHG emissions for Cono Sur by emissions source. Cono Sur’s total emissions for this period were 30,376.96 tonnes carbon dioxide equivalents (CO₂e) comprising 1,182.93 tonnes CO₂e Scope 1, 784.30 tonnes CO₂e Scope 2 and 28,409.73 tonnes CO₂e Scope 3 emissions.

Summary of CEMARS certification:



Viña Cono Sur S.A



Emissions source exclusions – Significant exclusions include

- Transport of waste to landfill (lack of data)
- Compost and prunings (reused back on the vineyards)
- Treatment of waste water (no operational control)
- Road and Air freight of product from Chilean port to international market (outside of GHG measurement boundary). Note: sea freight has been included which represents the majority of the freight emissions.
- Energy used in contracted bottling plant (information was not able to be provided)
- Plastic used on pallets (lack of data)

Emissions reduction commitments – Cono Sur has developed a GHG emissions reduction plan. Some projects in this plan include:

- Consider and manage emissions on the transport delivery from warehouse to port
- Manage electricity consumption in Santa Elisa’s winery
- Reduce emissions in the transport sector
- Explore opportunities for restoration of native vegetation in order to capture CO₂
- Purchase more environmental friendly chemical products

In addition to the above there is an intensity based target to reduce the overall weight of bottle by 2% within 12 months when compared to the base year. This will be reported as kilograms of glass per bottle.

Summary of CEMARS certification:



Viña Cono Sur S.A

GHG emissions reduction progress – Cono Sur has reduced emissions by 00.576 (tCO₂e per 1000 litres of wine); based upon a 5 year rolling average.

Verified by – carbonZero Strategic Business Unit

Threshold of materiality – Excluded emissions do not exceed 5% of the total footprint for organisation and product boundary stated.

Level of assurance – Reasonable Assurance for Scope 1 and 2 and Limited Assurance for Scope 3

Certification status – CEMARS certified “organisation” covering viticulture, winery, sales, marketing, administration, bottling and packaging.

Certificate number – 2011084J

Valid until – 31 August 2013

Nueva Tajamar 481, Of. 2101, Torre Sur, Las Condes, Santiago, Chile. Tel: (+56-2) 476 5090;
Email: alapostolcs@conosurwinery.cl; Web: www.conosur.com.