

Summary of CEMARS® certification:



Competenz

New Zealand Engineering, Food and Manufacturing Industry Training Organisation Incorporated (trading as Competenz) meets the requirements of the CEMARS® certification having measured its greenhouse gas emissions in compliance with ISO 14064-1 and committed to managing and reducing its emissions in respect of the operational activities of its organisation.

Competenz
INDUSTRY TRAINING

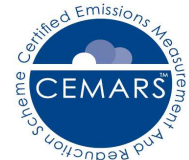
Introduction¹ – Competenz is the New Zealand Engineering, Food and Manufacturing Industry Training Organisation (ITO). Their role is to; define training standards and career path requirements for industry and to assist, lead and provide training support for industry.

Competenz develops and manages industry qualifications, defines training standards and career path requirements for industry and provides support for industry training, assessment and moderation processes. They operate as a qualifications standard setting body (SSB) and work with industry to establish the workplace competencies that are expected of a trained person working effectively and efficiently in industry.

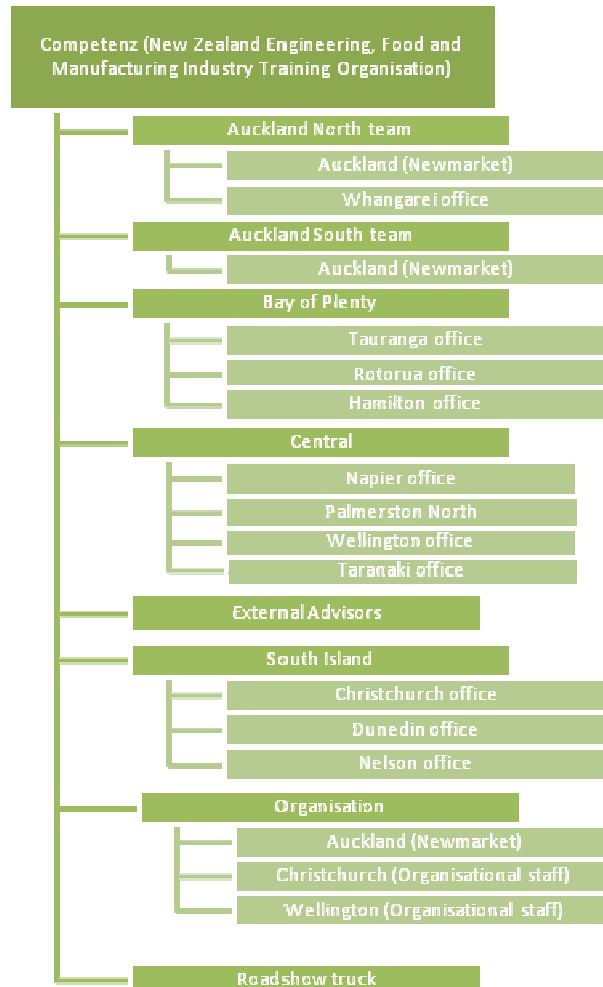
Boundary – The diagram below shows the organisational structure used for describing Competenz’s greenhouse gas (GHG) emissions inventory, and what business units were included in the carboNZero certification.

¹ **Disclaimer:** This Disclosure Statement is a summary of the verified information considered for certification and the certification decision. It should not be taken to represent the full submission for certification. While every effort has been made to ensure that the information in this Disclosure Statement is accurate and complete, Landcare Research does not, to the maximum extent permitted by law, give any warranty or guarantee relating to the accuracy or reliability of the information.

Summary of CEMARS® certification:



Competenz



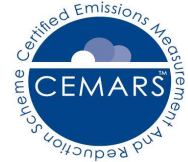
Consolidation approach – operational control

Base year – 01/01/2009 to 31/12/2009

Measurement period – 01/01/2009 to 31/12/2009

GHG emissions source inclusions – The diagrams below shows the operational GHG emissions for Competenz by business units and by emissions source. Competenz's total emissions for this period were 711.91 tonnes carbon dioxide equivalents (CO₂e) comprising 296.72 tonnes CO₂e Scope 1, 49.78 tonnes CO₂e Scope 2 and 365.41 tonnes CO₂e Scope 3 emissions.

Summary of CEMARS® certification:



Competenz

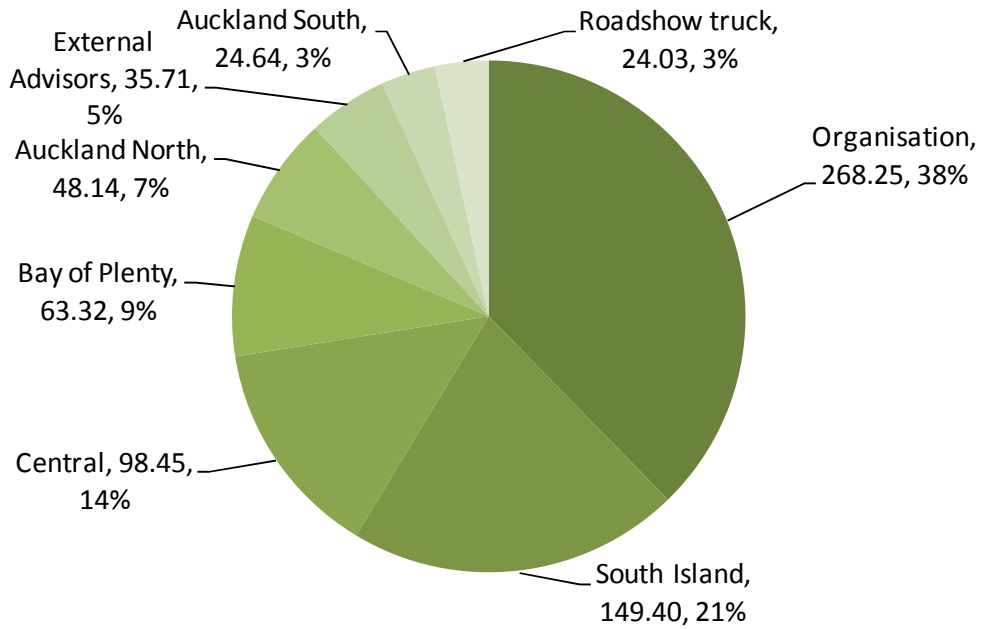


Figure 1: GHG emissions (tonnes CO₂e) by business activity.

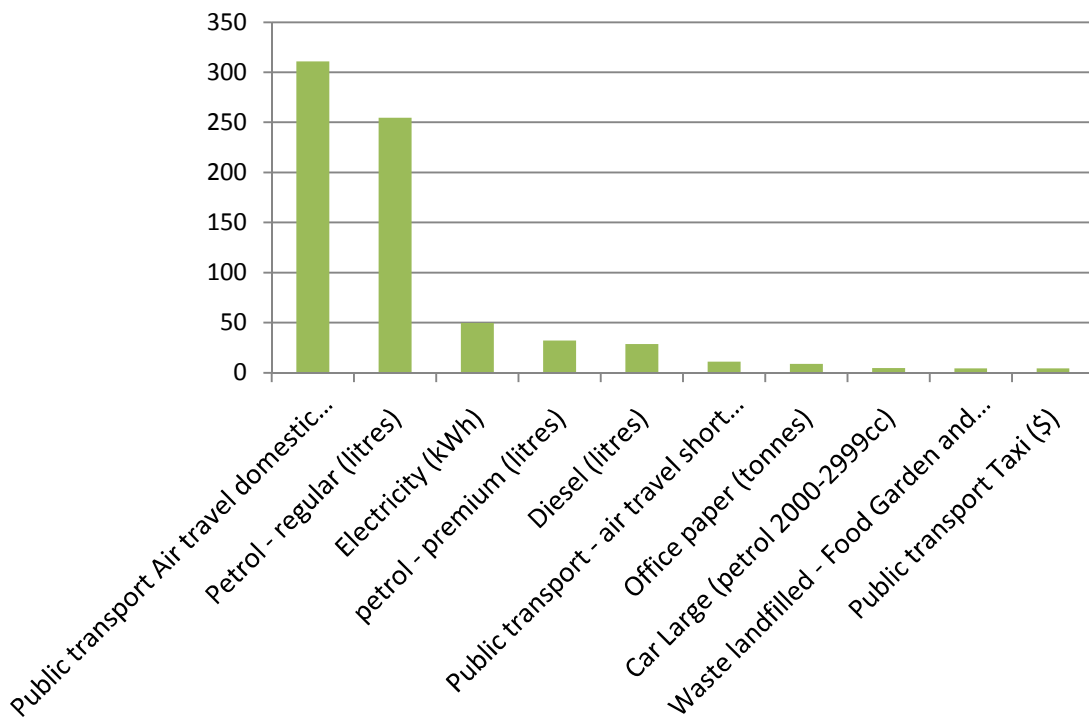


Figure 2: TOP 10 GHG emissions (tonnes CO₂e) organisational level.

Summary of CEMARS® certification:



Competenz

GHG emissions source exclusions –

- Quarterly venue hire for all-staff-meeting - Difficult to obtain data – estimated to be *de minimis*
- Venue hire for ATNZ-Trust meetings - Difficult to obtain data – estimated to be *de minimis*
- Office electricity use from Palmerston North, Nelson, Dunedin, Rotorua, Taranaki- Difficult to obtain data – estimated to be *de minimis*

GHG emissions reduction commitments – Competenz has developed a GHG emissions reduction plan. Some projects in this plan include:

- Staff competition for reducing the number of pages printed
- Consider staff commuting when moving offices
- Development of a comprehensive vehicle fleet policy
- Install light technology that optimises usage due to movement sensors
- Installation of video conferencing

Verified by – Deloitte

Threshold of materiality – Excluded emissions do not exceed 5% of the total footprint for organisation stated.

Level of assurance – Reasonable assurance.

Certification status – CEMARS certified “organisation” covering entire organisation including external advisors and roadshow truck.

Certificate number – 2010133J

Valid until – 30 April 2013