

# Summary of CEMARS® certification: City Care Limited



*City Care Limited meets the requirements of the CEMARS® certification having measured its greenhouse gas emissions in compliance with ISO 14064-1 committed to managing and reducing its emissions in respect of the operational activities of its organisation including: Branches, and their sub-depots, at Auckland, Tauranga, New Plymouth, Wellington and Timaru; Christchurch Divisions, and their sub-depots, for Parks, Facilities Management, Roding, Water and Wastewater; and their National Office in Christchurch.*

**Introduction<sup>1</sup>** – City Care Limited provides construction, maintenance and management services across New Zealand’s infrastructure and amenity assets. It operates across four distinct operating segments of the national contracting market. The segments are parks, facilities management, roading, water and wastewater. It supplies services primarily to local government clients.

City Care Limited employs approximately 1,000 people throughout New Zealand. It has branches and depots in eight cities with supporting facilities in smaller towns. Most of the staff work remotely on the client’s sites.

City Care Limited is a Council Controlled Trading Organisation operating under the Local Government Act 2002. Its sole shareholder is Christchurch City Holdings Limited, which is a wholly-owned subsidiary of the Christchurch City Council.

**Boundary** – the diagram below shows the organisational structure used for describing City Care Limited’s greenhouse gas (GHG) emissions inventory, and the business units included in the CEMARS certification. The parts of the structure shown in blue are City Care Limited’s business units.

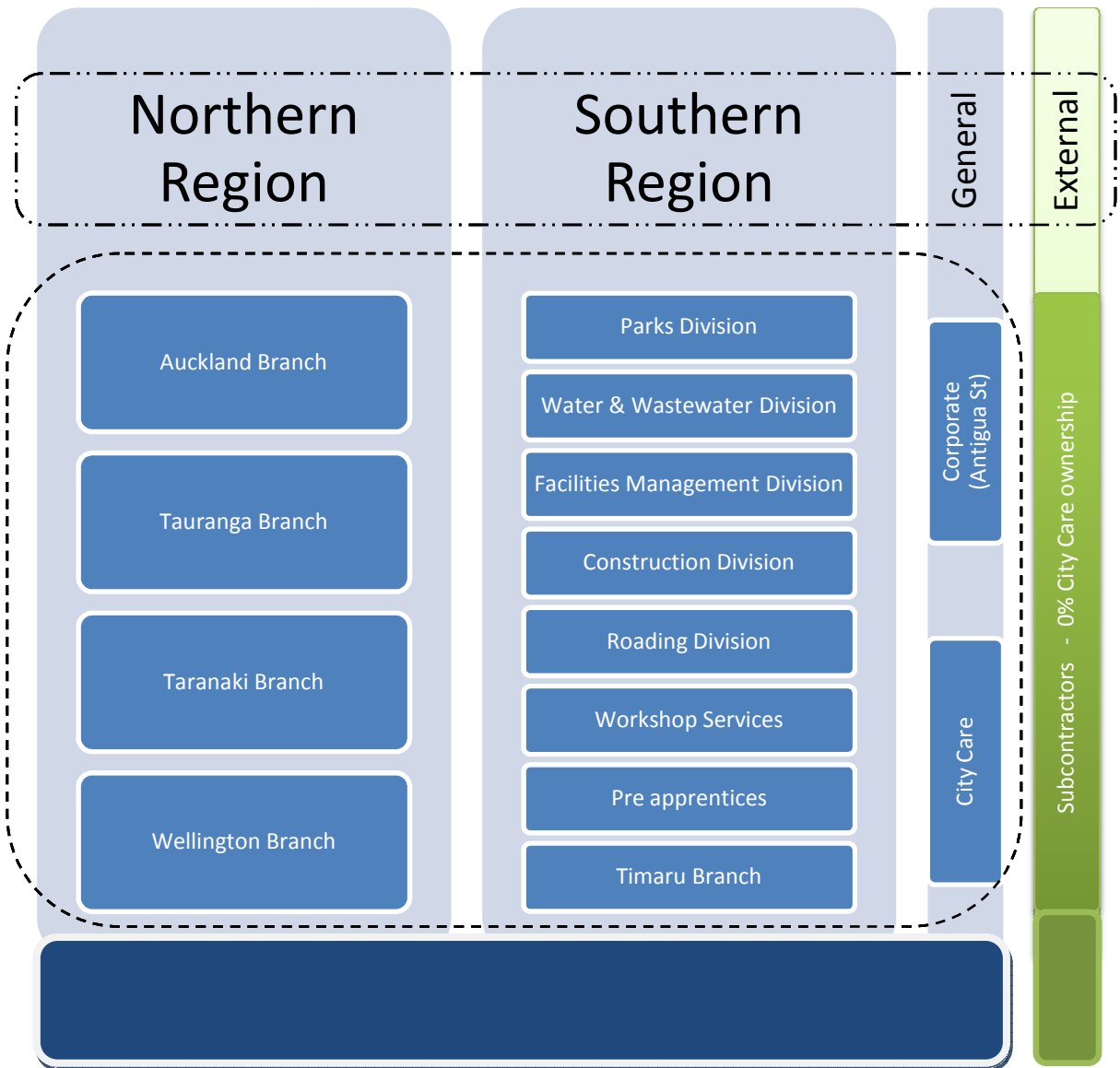
The parts shown in green (in the column at the right) are external to City Care Limited. They are subcontractors that City Care Limited engages to assist carrying out its business. The major area of subcontractor activity is helping City Care Limited deliver services to the client. Subcontractors are used instead of City Care’ Limited’s own employees.

For this first report subcontractor activity has been measured to a level that gives an indication of the scale of the emissions. The measure has been based on consumption of transport fuels.

City Care Limited

Certification and the certification decision. It should not be taken to represent the full submission for certification. While every effort has been made to ensure that the information in this Disclosure Statement is accurate and complete, Landcare Research does not, to the maximum extent permitted by law, give any warranty or guarantee relating to the accuracy or reliability of the information.

# Summary of CEMARS® certification: City Care Limited



- Groups for reporting
- City Care business units

# Summary of CEMARS<sup>®</sup> certification:

## City Care Limited



**Consolidation approach** –operational control

**Base year** – 01/07/2009 to 30/06/2010

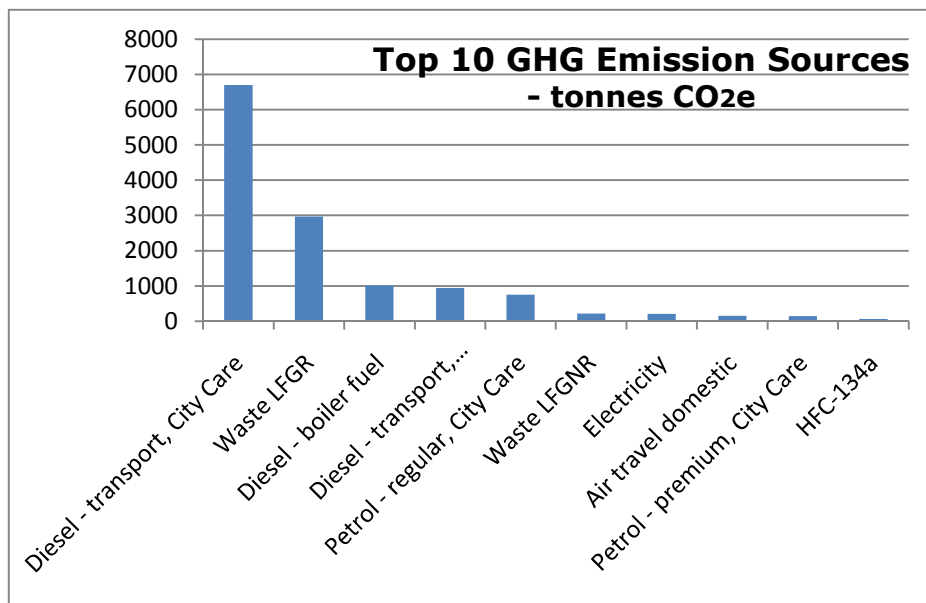
**Measurement period** – 01/07/2009 to 30/06/2010

### GHG emissions source inclusions –

City Care’s total emissions for this period were 13 285 tonnes carbon dioxide equivalents (CO<sub>2</sub>e). The total includes 999 tonnes CO<sub>2</sub>e from subcontractors in Scope 3. The table at the right shows the totals for each scope.

	CO <sub>2</sub> e tonnes
Scope 1	8 687
Scope 2	212
Scope 3	4 386
<b>Total</b>	<b>13 285</b>

The chart below shows the top ten GHG emissions for City Care by emissions source.



In addition to the categories shown in the chart above there are another seven emission sources that have a total of 111 tonnes CO<sub>2</sub>e.

### Key GHG emissions source exclusions

- Emissions from waste that are disposed of on behalf of clients, and is owned by clients.
- Embodied emissions from materials or products that are used in service delivery, on clients’ sites, and become clients’ property.
- Embodied emissions from the manufacture of bitumen.
- Emissions from refrigerants in leased buildings.

# Summary of CEMARS<sup>®</sup> certification:

## City Care Limited



**GHG emissions reduction commitments** – City Care Limited has developed a GHG emissions reduction plan. Some projects in this plan include:

- Implement management reductions plan incorporating base-year development issues and audit observations.
- Improve quality of data for subcontractor emissions.
- Integrate GHG management into routine Business Processes systems and Board reporting process.
- Review intensity measures and investigate measures appropriate for company.
- Complete full transfer of asphalt plant burners from mineral diesel to 100% biodiesel.
- Implement various upgrade initiatives at asphalt plant incorporating GHG benefits.

**Verified by** – Verification New Zealand

**Threshold of materiality** – Excluded emissions do not exceed 5% of the total footprint for operational boundary stated.

**Level of assurance** – Reasonable assurance for City Care business units  
– Limited assurance for subcontractors

**Certification status** – CEMARS certified “organisation” covering:

Branches, and their sub-depots, at Auckland, Tauranga, New Plymouth, Wellington and Timaru.

Christchurch Divisions, and their sub-depots, for Parks, Facilities Management, Roding, and Water and Wastewater.

National Office in Christchurch.

**Certificate number** –2010111J

**Valid until** – 31 October 2013

# Summary of CEMARS<sup>®</sup> certification:

## City Care Limited



**FACTS FOUND AFTER VERIFICATION** – further information about the emission factors used was discovered post-audit that has required a recalculation of this inventory.

The impact on the overall emissions was a non-material increase which is summarised in the Table below:

	Verified tCO <sub>2</sub> e	Revised tCO <sub>2</sub> e
Scope 1	8,687	8,707
Scope 2	212	225
Scope 3	4,386	4,425
TOTAL	13,285	13,357

Difference (tCO<sub>2</sub>e): 72

Difference (%): 0.54%