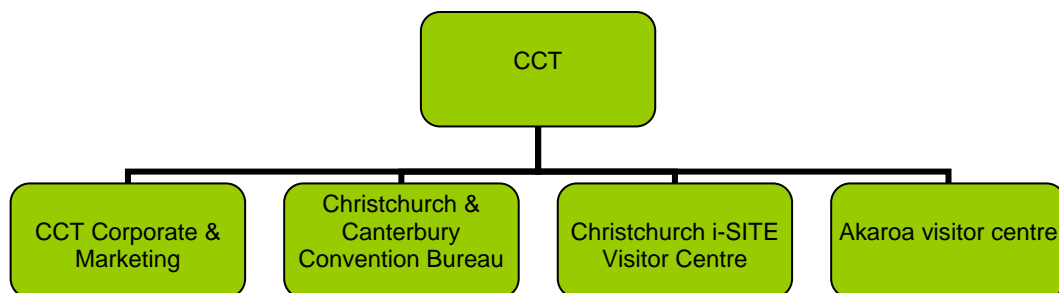


**Introduction<sup>1</sup>** – Christchurch and Canterbury Tourism (CCT) is the regional tourism organisation (RTO), responsible for the destinational marketing of the Canterbury region of New Zealand's South Island - a region which stretches from Kaikoura in the North to Waimate in the South, and from the East Coast to the Southern Alps.

**Base year** – 01/01/2006 to 31/12/2006

**Measurement period** – 01/01/2007 to 30/06/2008. This measurement period is 18 months to enable future inventories to be aligned with Christchurch and Canterbury Tourism Ltd's financial reporting.

**Boundary** – the diagram below shows the organisational structure used for describing greenhouse gas (GHG) emissions inventory, and what business units were included in the carboNZero certification.

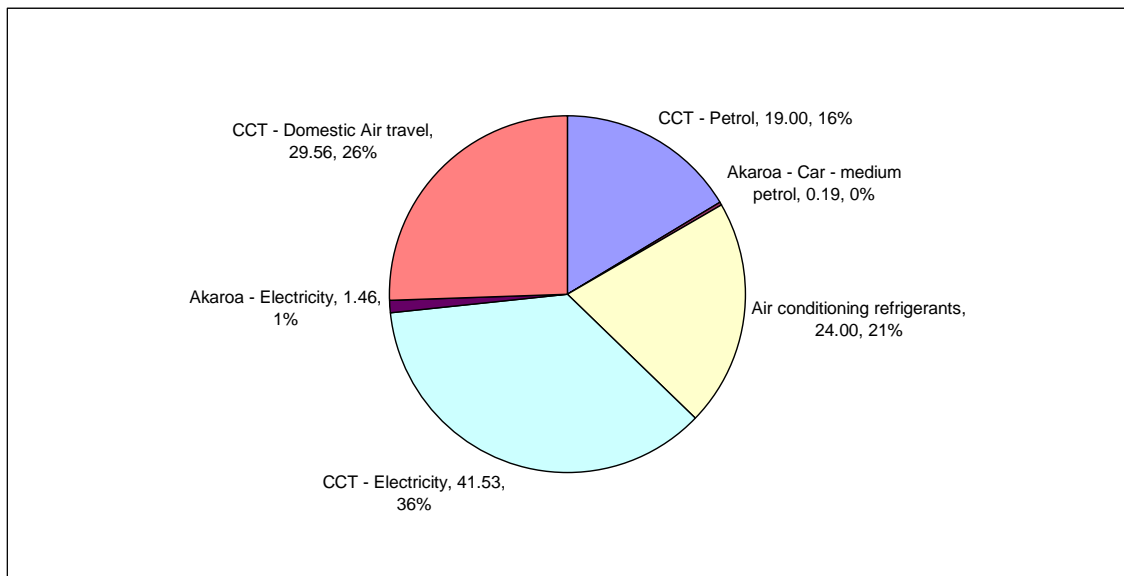


**Consolidation approach** – An operational control consolidation approach was used to account for emissions from Christchurch and Canterbury Tourism Ltd.

**GHG emissions profile** – the diagram below shows the operational GHG emissions for Christchurch and Canterbury Tourism Ltd by emissions source. Christchurch and Canterbury Tourism Ltd's total emissions for this period were 203 tonnes carbon dioxide equivalents (CO<sub>2</sub>e) comprising: 43.2 tonnes CO<sub>2</sub>e Scope 1, 43 tonnes CO<sub>2</sub>e Scope 2 and 116.8 tonnes CO<sub>2</sub>e Scope 3 emissions.

**GHG emissions source inclusions** – All Scope 1 and Scope 2 emissions sources (fuel used in vehicles and electricity) and Scope 3 emissions from domestic and international air travel.

<sup>1</sup> **Disclaimer:** This Disclosure Statement is a summary of the verified information considered for certification and the certification decision. It should not taken to represent the full submission for certification. While every effort has been made to ensure that the information in this Disclosure Statement is accurate and complete, Landcare Research does not, to the maximum extent permitted by law, give any warranty or guarantee relating to the accuracy or reliability of the information.



### GHG emissions source exclusions

1. Freight – road, shipping and air
2. Taxi use
3. Accommodation nights

**GHG emissions reduction commitments** – Christchurch and Canterbury Tourism Ltd has developed a GHG emissions reduction plan. Some projects in this plan include:

- When buying new appliances & computer products refer to the energy star programme to help choose the most energy efficient option
- Undergoing an energy audit through the Target Sustainability programme
- Introduction of driver training for staff on leased vehicles, covering health & safety and environmental aspects

### GHG emissions reduction report against last year's plan –

- Replaced three leased vehicles with low emissions vehicles
- Introduced educational material on driver behaviour patterns in all company cars
- Looked into feasibility of staff attending meetings through video conferencing and numbers attending

**Offset** – 203 tonnes CO<sub>2</sub>e VERs<sup>2</sup> from EBEX21 native forest regeneration projects<sup>3</sup>

**Verified by** – Telarc SAI Ltd

**Threshold of materiality** – excluded emissions do not exceed 5% of the total footprint for organisation and product boundary stated.

**Level of assurance** – Reasonable

<sup>2</sup> VERs are created by eligible projects for emissions reductions achieved up to the end of 2007.

<sup>3</sup> EBEX21 – Emissions Biodiversity Exchange in the 21<sup>st</sup> Century project creates carbon credits through the regeneration of native forest on private land – see [www.ebex21.co.nz](http://www.ebex21.co.nz)

## Summary of carboNZero certification: Christchurch and Canterbury Tourism Ltd



**Certification status** – carboNZero certified “organisation” covering its four business units and its regional tourism operations.

**Certificate number** – 2009002

**Valid until** – 30th September 2009