

Summary of CEMARS® certification:



Youth Hostels Association of New Zealand

The Youth Hostel Association New Zealand meets the requirements of CEMARS® certification having measured its greenhouse gas emissions in compliance with the requirements of ISO 14064-1:2006 and committed to managing and reducing its emissions in respect of the operational activities of its organisation including all YHA owned and managed hostels and the YHA national office.



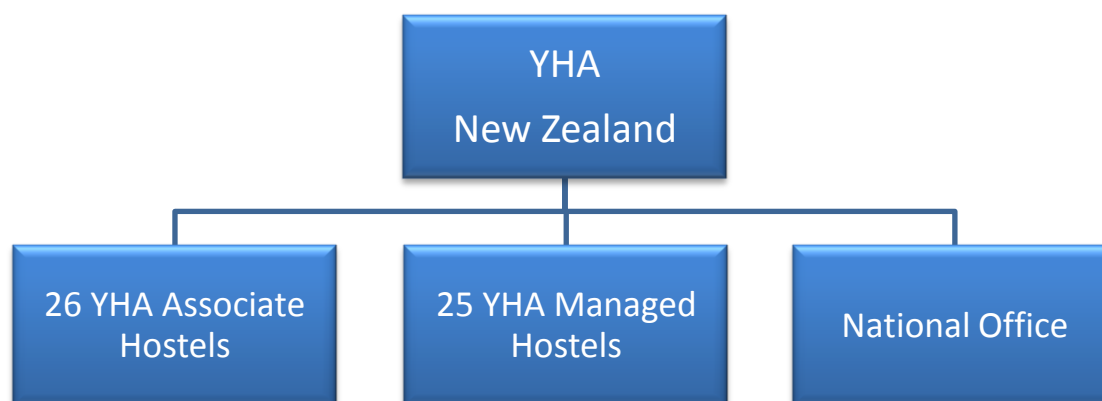
Introduction

YHA New Zealand is a not-for-profit incorporated society. We are a membership-based charitable organisation with a network of 51 hostels throughout New Zealand from the far north to right down south to a proposed eco-friendly hostel and learning centre on Stewart Island. 26 of these hostels are managed by YHA New Zealand; the remainder of the YHA network consists of Associate partnerships with independently owned and operated hostels that operate under the YHA brand and follow YHA's standards of quality and consistency, including its sustainability initiatives.

Over its history, YHA New Zealand has developed its hostel network in support of its charitable purpose. Our network not only supports and facilitates travel; it also promotes knowledge and understanding through the social interaction stimulated by our hostels' communal living and recreational areas. YHA also actively educates customers and members through our pervasive expression and commitment to environmental sustainability, for which the Association has received many awards and accolades over the years. YHA is committed to being an exemplar for social and environmental sustainability.

Boundary

The schematic below represents the organisational structure used for describing YHA's greenhouse gas (GHG) emissions inventory, and business units included in the CEMARS certification. The 26 Associate Hostels are not included in the inventory and certification process.



Summary of CEMARS[®] certification:



Youth Hostels Association of New Zealand

Consolidation approach – Operational control

Base year – 01/07/2008 – 30/06/2009

Measurement period – 01/07/2010 – 30/06/2011

GHG emissions source inclusions

Diagram 1 at the end of this document shows the YHA's operational GHG emissions for the 2010/11 reporting period by emissions source. YHA total emissions for this period were 926.14 tonnes carbon dioxide equivalents (CO₂e) comprising:

- 318.30 tonnes CO₂e Scope 1
- 415.81 tonnes CO₂e Scope 2
- 192.02 tonnes CO₂e Scope 3

Emissions intensity

Year	Total Emissions CO ₂ e	Total Revenue (\$ 000s)	tCO ₂ e/\$M
2008/09 (base year)	1,139.99	\$16,992	67.09
2009/10	1,150.84	\$17,058	67.47
2010/11	926.14	\$16,722	55.38

GHG emissions source exclusions

YHA's 26 Associate hostels are excluded from the inventory. These are small independent businesses operating under the YHA brand. Data has not been incorporated into this report from these hostels as they are independently owned and operated hostels rather than being part of the YHA-managed network.

Small courier packages and freight kilometres for goods delivery parcels have also been excluded from the emissions inventory due to the complexity of weighing and accurately recording different size parcels from the 25 YHA-managed properties. YHA estimates that the magnitude of this exclusion is less than 1% of the total inventory.

GHG emissions reduction commitments

YHA has developed a GHG emissions reduction plan for the forthcoming period. Some projects in this plan include:

Objective	Completion date
1. Reduce emissions from electricity and gas	30/06/12
2. Reduce emissions from air travel – domestic and international	30/06/12
3. Reduce waste to landfill	30/06/12
4. Reduce emissions from rental cars	30/06/12

Summary of CEMARS® certification:



Youth Hostels Association of New Zealand

Emissions reduction report against last year's plan

Performance of the previous year's management plan against the base year data is summarised as follows:

1. Reduction in emissions from electricity and gas
 - Electricity reduced by 208 tonnes or 33%
 - Total gas emissions increased by 52 tonnes or 4.5%, mainly due to the gas being reported incorrectly in the base year.
2. Reduction in emissions from air travel – domestic and international
 - Domestic air travel reduced by 35 tonnes or 3%
 - International air travel reduced by 14.5 tonnes or 1%
 - Total air travel reduced by 49 tonnes or 4.5%
3. Reduction in waste to landfill
 - Waste increased by just under 1%. Further waste audits were completed during 2010 which recalculated the grams of waste to landfill per guest overnight. Further waste audits are planned for the forthcoming period.
4. Reduction in emissions from rental cars
 - Emissions from rental cars reduced by 16.92 tonnes or 1.5%.

Verified by – Green Fox Limited

Data quality score – High

Threshold of materiality – excluded emissions do not exceed 5% of the total footprint for organisation and product boundary stated.

Level of assurance – reasonable assurance

Certification status – CEMARS certified “organisation” covering YHA National Office and all YHA-managed hostels within New Zealand.

Certificate number – 2010139J

Valid until – 31 October 2013

Summary of CEMARS® certification:



Youth Hostels Association of New Zealand

Diagram 1: YHA’s operational GHG emissions for the 2010/11 reporting period by emissions source

