

# Summary of CEMARS® certification:



## Les Mills New Zealand Limited

*“Les Mills New Zealand Limited meets the requirements of CEMARS certification having measured its greenhouse gas emissions in compliance with the requirements of ISO 1406-1:2006 and committed to managing and reducing its emissions in respect of the operational activities of its organisation including its 100% owned subsidiaries, the gyms, in New Zealand.”*



**Introduction<sup>1</sup>** – Les Mills New Zealand Limited owns Les Mills gyms throughout New Zealand. In 2010 there were 10 Les Mills gyms plus a head office in Auckland.

LMNZ values are aligned to **“improving the lives of New Zealanders”** and more recently around the broader concept of environmental and corporate responsibility. LMNZ has and continues to become increasingly aware of the impact its operations has upon the natural environment, and on the lives of New Zealanders and their local communities.

Achieving CEMARS certification is the beginning of a journey for LMNZ. The organisation feels a distinct sense of responsibility to reduce the impact of its operations, where practical, and to deliver a message to their members to do the same. Increasingly, there is also a commercial expectation upon LMNZ by current members to be ‘doing the right thing’ for communities and the environment.

**Boundary** – Figure 1 below shows the organisational structure used for describing the organisation’s greenhouse gas (GHG) emissions inventory, and what business units were included in the inventory in the context of the entire organisational profile. The parts of the structure (business units) in blue have been identified as being within this emissions inventory. Business units excluded from the inventory are shown in light blue.

---

<sup>1</sup>**Disclaimer:** This Disclosure Statement is a summary of the verified information considered for certification and the certification decision. It should not be taken to represent the full submission for certification. While every effort has been made to ensure that the information in this Disclosure Statement is accurate and complete, Landcare Research does not, to the maximum extent permitted by law, give any warranty or guarantee relating to the accuracy or reliability of the information.

# Summary of CEMARS® certification:



## Les Mills New Zealand Limited

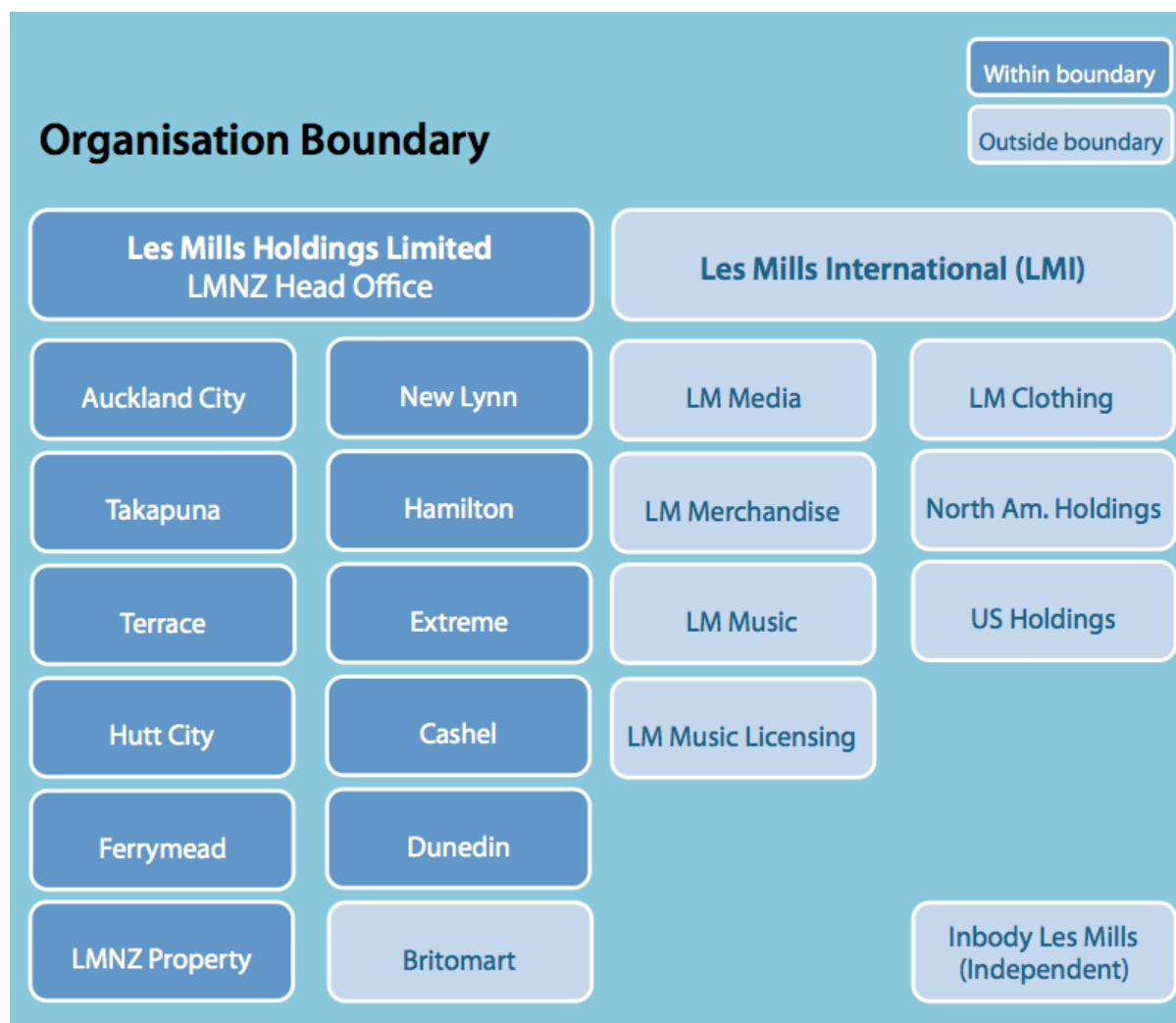


Figure 1: Organisational structure showing business units included and excluded.

**Consolidation approach** – The operational control consolidation approach has been used to account for operational emissions with reference to the methodology described in the GHG Protocol and ISO 14064-1:2006 standards.

**Base year** – 01/01/2010 to 31/12/2010

**Measurement period** – 01/01/2010 to 31/12/2010

**Emissions source inclusions** – The operational GHG emissions for the organisation by emissions source are shown in Figure 2 below.

# Summary of CEMARS® certification:



## Les Mills New Zealand Limited

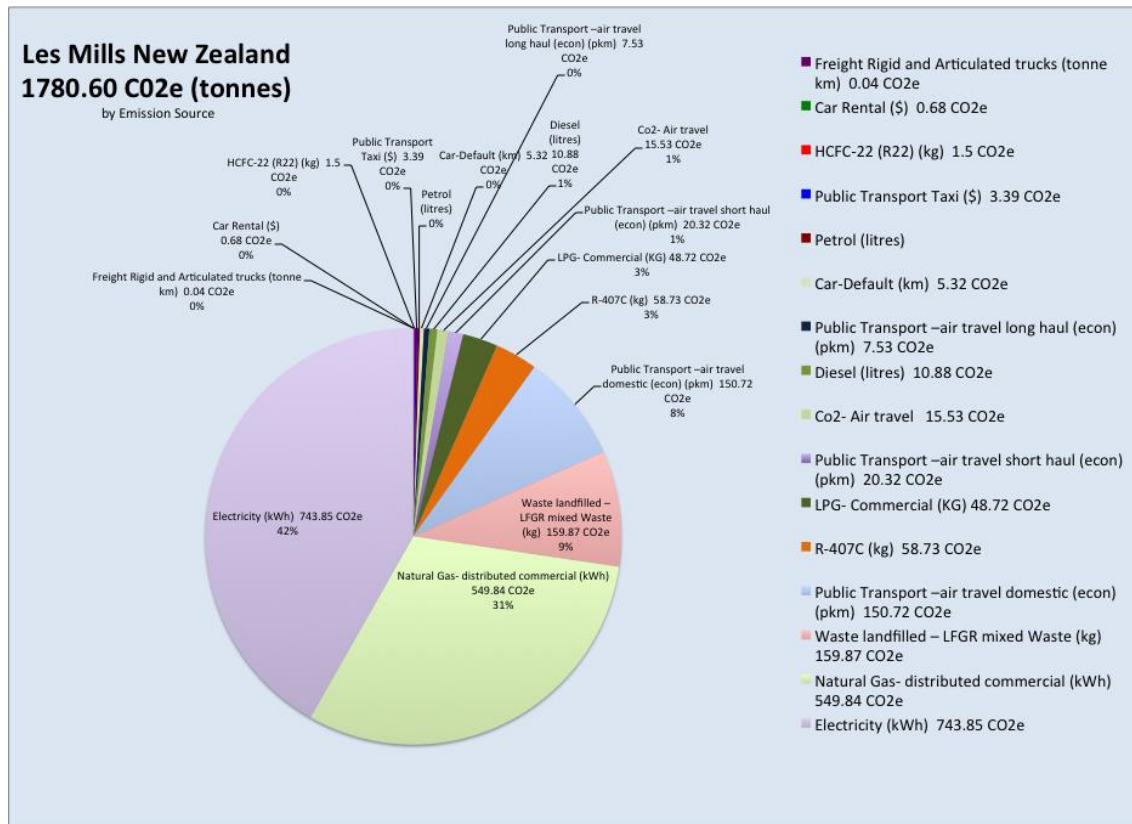


Figure 2: GHG emissions by emissions source.

Emissions as tonnes of carbon dioxide equivalents (tCO<sub>2</sub>e) for this period were:

- Scope 1: 620.64 tCO<sub>2</sub>e
- Scope 2: 743.85 tCO<sub>2</sub>e
- Scope 3: 416.11 tCO<sub>2</sub>e
- Total: 1780.60 tCO<sub>2</sub>e

### Emissions intensity

- 40.25 tonnes CO<sub>2</sub>e per \$M gross turnover
- 40.19 kg CO<sub>2</sub>e per member

**Emissions source exclusions** – The following emissions sources were excluded from the inventory for this measurement period:

- NZ Couriers freight- The freight component from these suppliers has been eliminated due the items freighted being under 2kg. This is deemed to be *de minimis*.
- Travel data amounting to \$6095.57 from LMNZ general ledger has been identified as travel but without supporting information. This amount is 3% of total travels spend. The total travel emissions represent 12.5% of total emissions. The unknown data could be approximated to 0.4% of the total emissions. As it is indeterminable whether this data even carries a carbon component it has been excluded on this basis.

# Summary of CEMARS<sup>®</sup> certification:



## Les Mills New Zealand Limited

- There are three privately owned but signwritten vehicles, with the Les Mills New Zealand brand. These vehicles are owned by employees, used for personal travel only and not included in the emissions inventory.
- During the inventory year a new club was fitted out during 2010, opening early in 2011 (Britomark). Emissions as a result of the fit out are listed as an emissions source exclusion.
- Les Mills New Zealand owns a building in Khyber Pass, Auckland. Half of this building is leased and the other half is vacant. Emissions related to this building (site) is therefore excluded as it is outside the company boundary for this year.

**Emissions reduction commitments** – A GHG emissions management plan and reduction targets have been developed.

- Electricity reduction target – 6% of emissions per member by 31 December 2016. To be achieved through technology implementation and education and awareness campaigns to encourage members and staff to actively contribute to reducing electricity consumption.
- Gas reduction target – 6% of emissions per member by 31 December 2016. To be achieved via technology implementation and education and awareness campaigns to encourage members and staff to use hot water wisely.
- Waste reduction target - 6% of emissions per member by 31 December 2016. To be achieved by implementing a nationwide recycling program incorporated into all gyms.
- Air travel reduction target – 2% % of emissions per member by 31 December 2016. To be achieved through increased coordination of workshops and conferences. Introducing teleconferencing where possible.

**Verified by** – Green Fox Limited

**Data quality score** – Fair

**Threshold of materiality** – Excluded emissions do not exceed 5% of the total footprint for organisation stated.

**Level of assurance** – Reasonable

**Certification status** – CEMARS certified organisation

**Certificate number** – 2011159J

**Valid until** – 20 February 2015

Les Mills New Zealand Limited, Head Office, 30 Graham Street, Auckland City 1010, New Zealand, Telephone (09) 367-2229 Ext 8286, Email: [blair.wolfgram@lesmills.co.nz](mailto:blair.wolfgram@lesmills.co.nz), Web: [www.lesmills.co.nz](http://www.lesmills.co.nz)