

# Summary of CEMARS<sup>®</sup> certification:



## Viña Chocalán S.A

*Viña Chocalán S.A. meets the requirements of CEMARS<sup>™</sup> certification having measured its greenhouse gas emissions in compliance with the requirements of ISO 14064-1:2006 and committed to managing and reducing its emissions in respect of the operational activities of its organisation including: Chocalán Winery, Chocalán Vineyard, Malvilla Vineyard and Santiago Office.*



**Introduction<sup>1</sup>** – Viña Chocalán S.A (Chocalán) is a family winery that began its operations in 1998. It is established in a privileged *terroir* of the Maipo valley, in the zone of Melipilla. Due to their location the grapes grown in this region produce aromatic wines..

The modern strategic design of their vineyards merged with the environment, takes advantage of the slope of the hills to move their raw materials and wine using only gravity.

The winery, aligned with their commitment to sustainability and a sustainable community, has adopted, implemented and internalized multiple technologies and ethical principles associated with natural care. These strategies have been devolved to each member of the organisation. One of the focus areas was the decision to reduce their pollution from glass by reducing the weight and volume of wine packaging. Moreover, the location on the slope of the hill means great savings in energy that will result in a lower environmental impact.

They are continuing to work for environmental issues, and have therefore decided to measure, assess and reduce their CO<sub>2</sub> emissions under the CEMARS scheme.

**Boundary** – the diagram below shows the organisational structure used for describing Viña Chocalán's greenhouse gas (GHG) emissions inventory, and what business units were included in the CEMARS<sup>®</sup> certification.

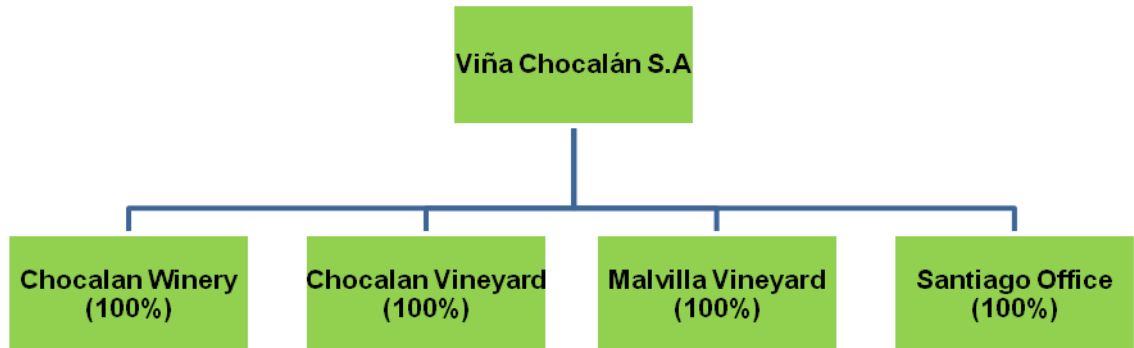
---

<sup>1</sup> **Disclaimer:** This Disclosure Statement is a summary of the verified information considered for certification and the certification decision. It should not be taken to represent the full submission for certification. While every effort has been made to ensure that the information in this Disclosure Statement is accurate and complete, Landcare Research does not, to the maximum extent permitted by law, give any warranty or guarantee relating to the accuracy or reliability of the information.

# Summary of CEMARS® certification:



Viña Chocalán S.A

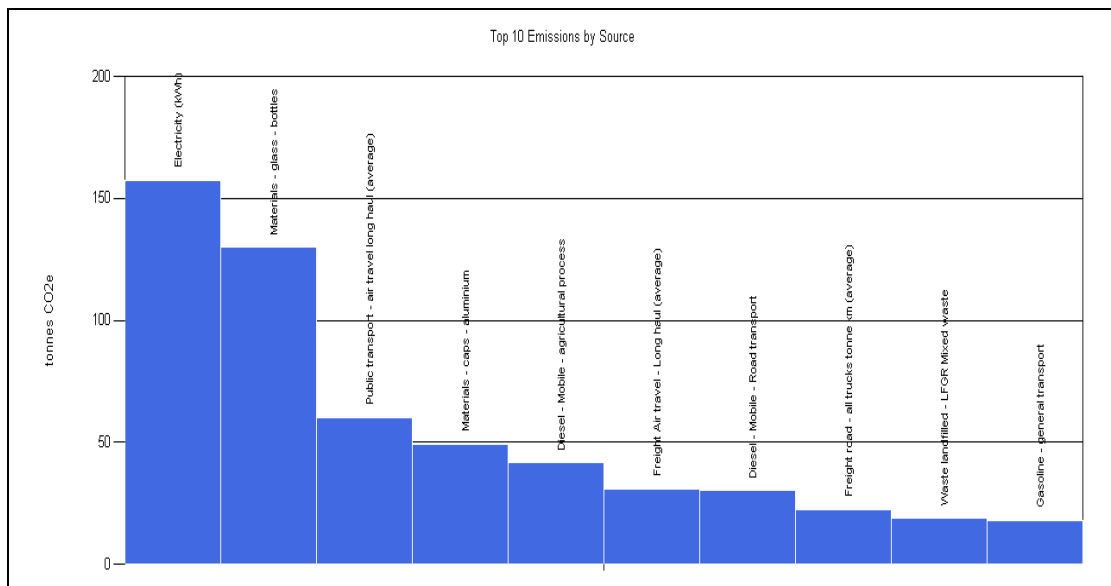


**Consolidation approach** – operational control

**Base year** – 01/01/2010 to 31/12/2010

**Measurement Period** - 01/01/2010 to 31/12/2010

**Emissions source inclusions** – the diagram below shows the operational GHG emissions for Viña Chocalán by emissions source. Viña Chocalán’s total emissions for this period were **625.02** tonnes carbon dioxide equivalents (CO<sub>2</sub>e) comprising 126.88 tonnes CO<sub>2</sub>e Scope 1, 157.51 tonnes CO<sub>2</sub>e Scope 2 and 340.62 tonnes CO<sub>2</sub>e Scope 3 emissions.



**Emissions source exclusions** – Maritime transport of final product from departure port to arrival port has been excluded, as this is FOB and Viña Chocalán has no operational control

# Summary of CEMARS<sup>®</sup> certification:



## Viña Chocalán S.A

over these emissions. The emissions from avocado grown on the same site as the winery have been excluded.

**Emissions reduction commitments** – Viña Chocalán has developed a GHG emissions reduction plan. Some projects in this plan include:

- Weight bottles reduction in all their lines
- Recycling plan
- Evaluate an energy audit

**Verified by** – carbonZero Strategic Business Unit

**Threshold of materiality** – Excluded emissions do not exceed 5% of the total footprint for organisation stated.

**Level of assurance** – Limited

**Certification status** – CEMARS certified “organisation” covering viticulture, winery, sales, marketing, administration, bottling and packaging.

**Certificate number** – 2011092J

**Valid until** – 30 April 2014

Cruz del Sur 133, of 901, Las Condes, Santiago, Chile. Telephone: +56 (2) 4374763.  
Email: [p.bustos@chocalanwines.com](mailto:p.bustos@chocalanwines.com) Web: <http://www.chocalanwines.com/>