

Summary of carboNZero certification:



Wairau River Wines Limited

Year 2 of 3 Year Certificate Period

Wairau River Wines Limited meets the requirements of carboNZero^{Cert} certification having measured its greenhouse gas emissions in compliance with the requirements of ISO 14064-1:2006 including additional life cycle emissions associated with all wine products, committed to managing and reducing its emissions and neutralised its remaining unavoidable emissions through the cancellation of an appropriate number of verified carbon credits in respect of its organisation and wine products.



WAIRAU RIVER WINES
FAMILY ESTATE SINCE 1978

Introduction¹ – Wairau River Wines is a privately owned family wine estate located in the Rapaura District of the Wairau Valley, Marlborough, New Zealand. Wairau River Wines owns five estate vineyards, a winery that was built in 2002, and operates a restaurant/cellar door. Their flagship wine is Sauvignon Blanc, while the rest of the portfolio comprises Pinot Gris, Riesling, Gewürztraminer, Chardonnay, Viognier and Pinot Noir. Wairau employ 20 full-time staff. Wairau River Wines have an environmental policy that states that they are committed to crafting wines of the highest quality through environmentally sustainable practices, and is certified by New Zealand Winegrowers under the Sustainable Winegrowing New Zealand programme for both the vineyards and winery. Wairau have a small section of one vineyard in conversion to organics which will be fully certified in 2012.

Boundary – Figure 1 below shows the organisational structure used for describing the organisation's greenhouse gas (GHG) emissions inventory, and what business units were included in the inventory in the context of the entire organisational profile. The parts of the structure (business units) in blue have been identified as being within this emissions inventory. Business units excluded from the inventory are shown in yellow

¹**Disclaimer:** This Disclosure Statement is a summary of the verified information considered for certification and the certification decision. It should not be taken to represent the full submission for certification. Whilst every effort has been made to ensure that the information in this Disclosure Statement is accurate and complete, carboNZero Holdings Ltd does not, to the maximum extent permitted by law, give any warranty or guarantee relating to the accuracy or reliability of the information.

Summary of carboNZero certification:



Wairau River Wines Limited

Year 2 of 3 Year Certificate Period

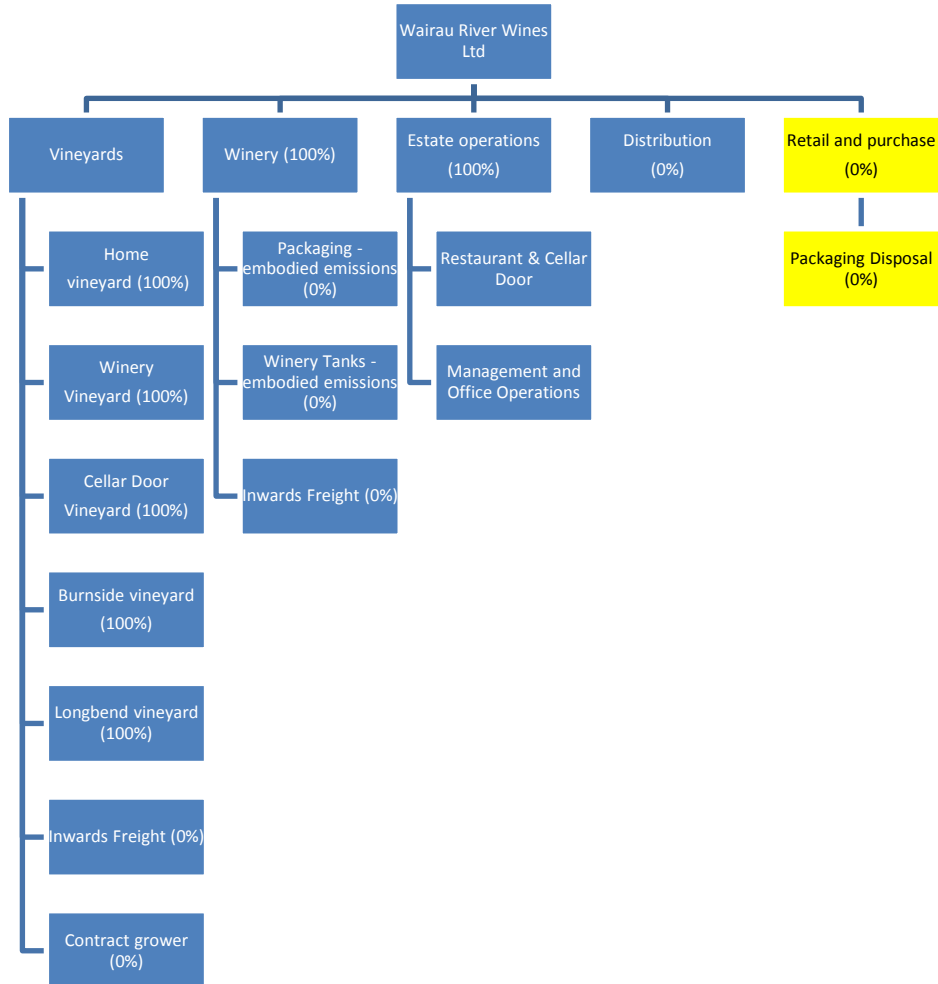


Figure 1: Organisational structure showing business units included and excluded.

Consolidation approach – The operational control consolidation approach has been used to account for operational emissions with reference to the methodology described in the GHG Protocol and ISO 14064-1 standards.

Base year – 01/07/2006 to 30/06/2007

Measurement period – 01/07/2010 to 30/06/2011

Emissions source inclusions – The operational GHG emissions for the organisation by emissions source are shown in Figure 2 below.

Wairau River Wines Limited

Year 2 of 3 Year Certificate Period

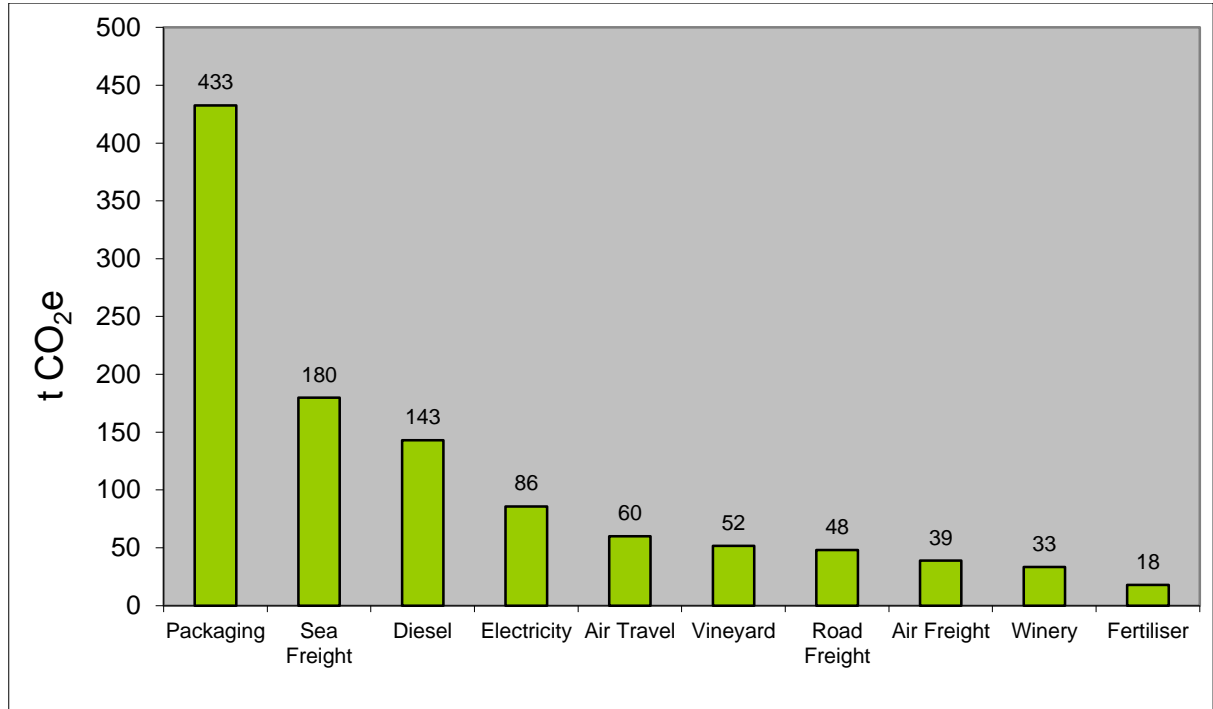


Figure 2: GHG emissions by top 10 emissions sources.

Emissions as tonnes of carbon dioxide equivalents (tCO₂e) for this period were:

Scope 1: 189.58 tCO₂e

Scope 2: 85.70 tCO₂e

Scope 3: 862.30 tCO₂e

Total: 1137.58 tCO₂e

Emissions source exclusions – The following emissions sources were excluded from the inventory for this measurement period:

- Embodied GHG emissions associated with the manufacture of new machinery purchased for use in the vineyards have been excluded due to insufficient data. These emissions will be included in future reporting periods once appropriate data becomes available.
- Winery fermentation emissions have been excluded from the calculations for this period because they are considered to have no net emissions, as per guidance from IPCC (1996) and AGO (2005) guidelines.
- Emissions associated with the transportation and shipping of bulk wine from NZ to overseas destinations is excluded as these are purchased by third party clients ex winery cellars.

Summary of carboNZero certification:



Wairau River Wines Limited

Year 2 of 3 Year Certificate Period

- Dry goods are held in stock and used in the winemaking process. Embodied GHG emissions associated with the manufacture of these goods have been excluded due to insufficient data being available to perform this calculation.
- GHG emissions associated with the disposal of waste from the estate restaurant, wine shop and winery have been excluded for this period due to estimated emissions being below the allowed de minimis (refer Appendix 2 for details of calculation).
- GHG emissions associated with the transport of food and other raw materials to the estate restaurant and office facilities have been excluded for this period due to insufficient data availability. These emissions are likely to be below the allowed de minimis in the context of the total GHG emissions profile for Wairau River Wines, but will be included in future reporting periods once appropriate data becomes available.
- GHG emissions associated with the car park extensions restaurant, wine shop and winery have been excluded for this period due to estimated emissions being below the allowed de minimis (refer Appendix 2 for details of calculation).

Emissions reduction commitments – A GHG emissions management plan and reduction targets have been developed.

- Reduce intensity of emissions through lighter glass
- Reduce emissions in winery electricity through the ongoing monitoring of power consumption
- Reduce fuel consumption in the vineyards

Emissions reduction report against last year's plan – This is the fifth year of reporting under carboNZero. A reduction in Scope 1 and 2 emissions of 5.8 tCO₂e over five years has been achieved

Offset – 1138 tonnes CO₂e from BIOMASS – Siam Cement credits. Serial numbers 13004499-13005636 have been cancelled (or equivalent) on Markit Environmental Registry.

Verified by – Verification New Zealand

Data quality score – High

Threshold of materiality – Excluded emissions do not exceed 5% of the total footprint for organisation stated.

Level of assurance – Reasonable

Summary of carboNZero certification:



Wairau River Wines Limited

Year 2 of 3 Year Certificate Period

Certification status – carboNZero certified “organisation” and wine “products²” covering its 15 brands³.

Certificate number – 2011006J-2

Valid until – 31 October 2013

Wairau River Wines Limited, Giffords Road, RD 3, Blenheim, New Zealand. Tel: +64 3 572 7950.
Email: lparkinson@wairauriverwines.com Web: <http://www.wairauriverwines.com/index.htm>

² 2011 Vintage for: Chardonnay, Gewürztraminer, Pinot Gris, Pinot Noir, Riesling, Summer Riesling, Sauvignon Blanc, Viognier.

³ 13”, Five Ways, Australian Wine Society, Fernz, Longbend, Martins Rake, Rapaura School, Robinsons, Sunshine Bay, Tikohi, Turning Heads, Vintage cellars and Wairau River.