

## Summary of carboNZero certification:



### Wellington Combined Taxis Limited

Year 2 of 3 Year Certificate Period

*Wellington Combined Taxis Limited meets the requirements of carboNZero<sup>Cert™</sup> certification having measured its greenhouse gas emissions in compliance with the requirements of ISO 14064-1:2006 including additional life cycle emissions associated with the selected services, committed to managing and reducing its emissions and neutralised its remaining unavoidable emissions through the cancellation of an appropriate number of verified carbon credits in respect of its organisation including its taxi vehicle fleet and excluding Wellington Combined Shuttles.*



**Introduction<sup>1</sup>** – Wellington Combined Taxis Limited (trading as Wellington Combined Taxis) provides taxi transport services in Wellington city. They also provide tours of the Wellington, Wairarapa, and Kapiti Coast regions. Wellington Combined Taxis is a shareholder owned and operated company which was formed in 1993 with the amalgamation of the then two separately operated taxi companies - Wellington Taxis Coop Society and Black White & Grey Taxis.

Wellington Combined Taxis have a commitment to sustainable business practice. This includes the introduction of hybrid vehicles to the fleet since June 2007. Wellington Combined Taxis have also committed to a rule whereby no petrol only vehicles are allowed to enter the fleet after June 2008. The majority of the Company's current and future vehicles are evaluated against rigid fuel efficiency guidelines. The taxi fleet is comprised of a range of cars, vans, and shuttles.

**Boundary** – The diagram below shows the organisational structure used for describing Wellington Combined Taxis' greenhouse gas (GHG) emissions inventory, and what business units were included in the carboNZero certification. Wellington Combined Shuttles (Co-op Shuttles Wellington Ltd) is comprised of shuttle vans and have been excluded from this emissions inventory. These carry their own Co-op Shuttles branding, and are operated via their own website and booking phone number.

---

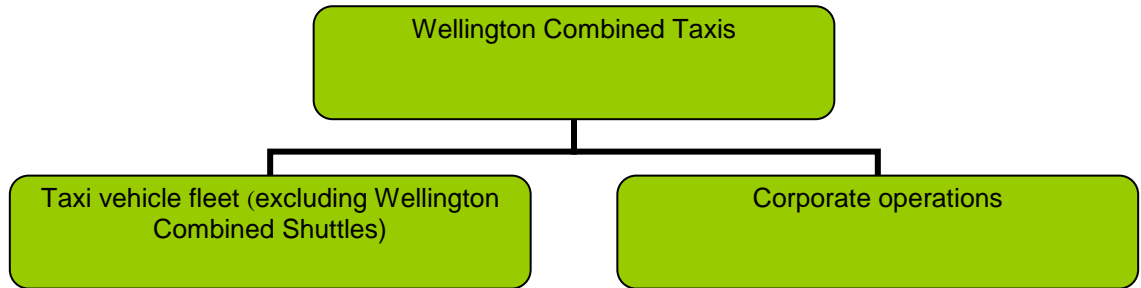
<sup>1</sup> **Disclaimer:** This Disclosure Statement is a summary of the verified information considered for certification and the certification decision. It should not be taken to represent the full submission for certification. While every effort has been made to ensure that the information in this Disclosure Statement is accurate and complete, Landcare Research does not, to the maximum extent permitted by law, give any warranty or guarantee relating to the accuracy or reliability of the information.

## Summary of carboNZero certification:

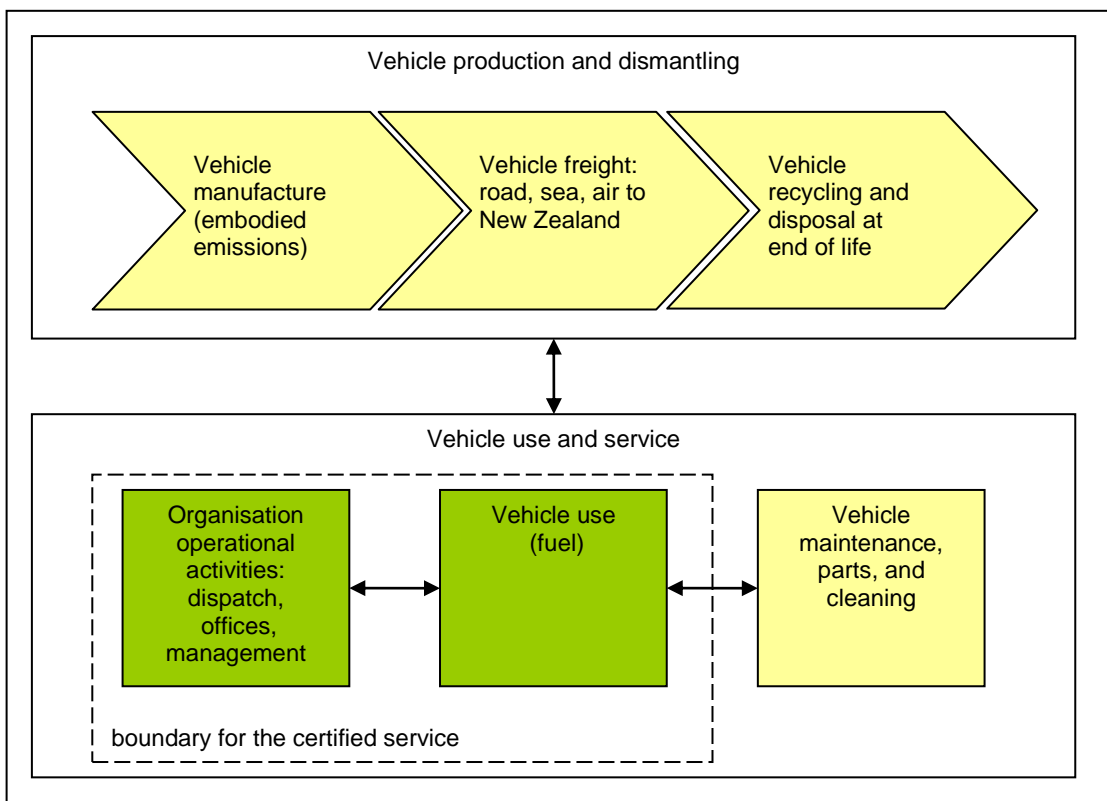


### Wellington Combined Taxis Limited

Year 2 of 3 Year Certificate Period



For the certified service, the diagram below shows the additional GHG emissions sources associated with the life cycle of the taxi service. The green boxes indicate activities included in the certified service, whilst the yellow boxes indicate the emissions sources not included in the certified service.



**Consolidation approach** – operational control

**Base year** – 1/7/2008 to 30/06/2009

**Measurement period** – 1/7/2010 to 30/06/2011

## Summary of carboNZero certification:



### Wellington Combined Taxis Limited

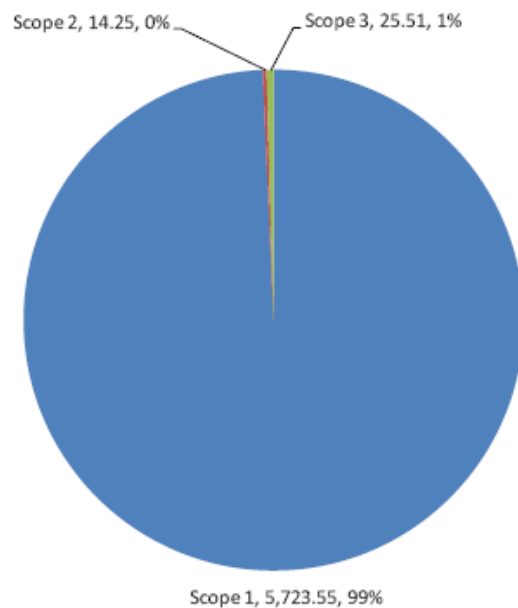
Year 2 of 3 Year Certificate Period

**GHG emissions source inclusions** – the diagram below shows the operational GHG emissions for Wellington Combined Taxis by emissions source. Wellington Combined Taxis' total emissions for this period were 5,763.31 tonnes carbon dioxide equivalents (CO<sub>2</sub>e) comprising:

Scope 1: 5,723.55 tonnes CO<sub>2</sub>e

Scope 2: 14.25 tonnes CO<sub>2</sub>e

Scope 3: 25.51 tonnes CO<sub>2</sub>e



**GHG emissions source exclusions** – the following emissions sources were excluded as the amount of emissions associated with these was considered to be insignificant in proportion to the total direct GHG emissions profile, and/or there was insufficient data available to perform emissions calculations:

- Electricity for offsite/contracted vehicle grooming
- Vehicle maintenance services
- Office waste to landfill
- Electricity from sub-leased buildings

**GHG emissions reduction commitments** – Wellington Combined Taxis has developed a GHG emissions reduction plan. Some projects in this plan include:

- Undertaking a vehicle fleet check through the Energy Efficiency and Conservation Authority

## Summary of carboNZero certification:



### Wellington Combined Taxis Limited

Year 2 of 3 Year Certificate Period

- Maintaining a vehicle requirement rule to ensure low emissions intensity vehicles are entering the fleet
- Providing fuel efficient driving practices information and/or training for all drivers.

**GHG emissions reduction report against last year's plan** – Wellington Combined Taxis has achieved reductions in the taxi vehicle fleet of approximately 29% per km travelled when compared with the base year. The intention is to further reduce these emissions as the new vehicle requirements continue to enable integration of more fuel efficient vehicles into the taxi fleet.

**Offset** – 5,764 tonnes CO<sub>2</sub>e. VCS VCUs from the Siam Cement Biomass Project. Serial numbers 1398-60570250-60570677-VCU-008-MER-TH-4-403-01092006-31122006-0 and 1694-69907868-69913203-VCU-008-MER-TH-4-403-01042006-31082006-0 have been cancelled (or equivalent) on Markit Environmental Registry.

**Verified by** – AsureQuality

**Threshold of materiality** – excluded emissions do not exceed 5% of the total footprint for organisation and product boundary stated.

**Level of assurance** – Reasonable assurance

**Certification status** – carboNZero certified “organisation” and “service”

**Certificate number** – 2010098J – Year 2

**Valid until** – 31 October 2013