

Summary of CEMARS[®] certification:



University of Canterbury

Year 1 of 3 Year Certificate Period

The University of Canterbury meets the requirements of CEMARS certification having measured its greenhouse gas emissions in compliance with ISO 14064-1:2006, and committed to managing and reducing its greenhouse gas emissions in respect of the operational activities of its organisation



Introduction¹ – The University of Canterbury’s research and teaching activities cover the Arts, Business & Economics, Education, Engineering, Law and Science. The University hosts a number of research centres, including the NZ ICT Innovation Institute (NZi3), the Biomolecular Interaction Centre, the NZ Institute for Language, Brain & Behaviour, and the Waterways Centre for Freshwater Management.

The University Campus occupies 86 ha of land in the suburb of Ilam, Christchurch. It also has off-site field stations, including the Mt John Observatory. .

The University has a sustainability network of students and staff who share an interest in this area. It also has a Sustainability Office which leads the University’s sustainability activities. The University’s sustainability policies apply to various activities on campus including printing and food service procurement. This commitment to sustainability is shared by the University of Canterbury Students’ Association which has its own sustainability policy. More information on the University can be found at www.canterbury.ac.nz.

Boundary – Figure 1 and Figure 2 below shows the organisational structure used for describing University of Canterbury’s greenhouse gas (GHG) emissions inventory, and what business units were included in the carbonZero certification. Yellow business units were excluded from the certification.

¹**Disclaimer:** This Disclosure Statement is a summary of the verified information considered for certification and the certification decision. It should not be taken to represent the full submission for certification. Whilst every effort has been made to ensure that the information in this Disclosure Statement is accurate and complete, Landcare Research does not, to the maximum extent permitted by law, give any warranty or guarantee relating to the accuracy or reliability of the information.

Summary of CEMARS® certification:



University of Canterbury

Year 1 of 3 Year Certificate Period



Figure 1: Organisational legal structure

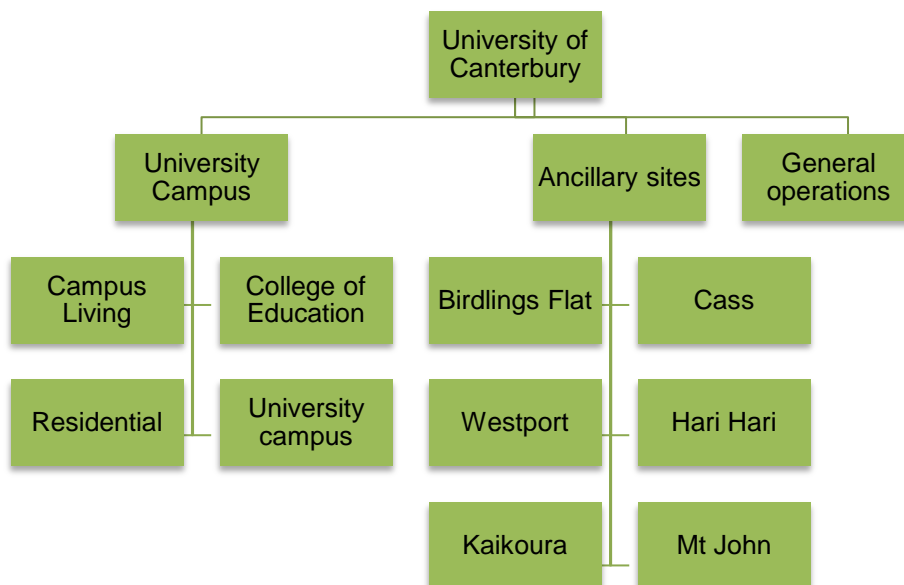


Figure 2. Organisation reporting structure

Summary of CEMARS® certification:



University of Canterbury

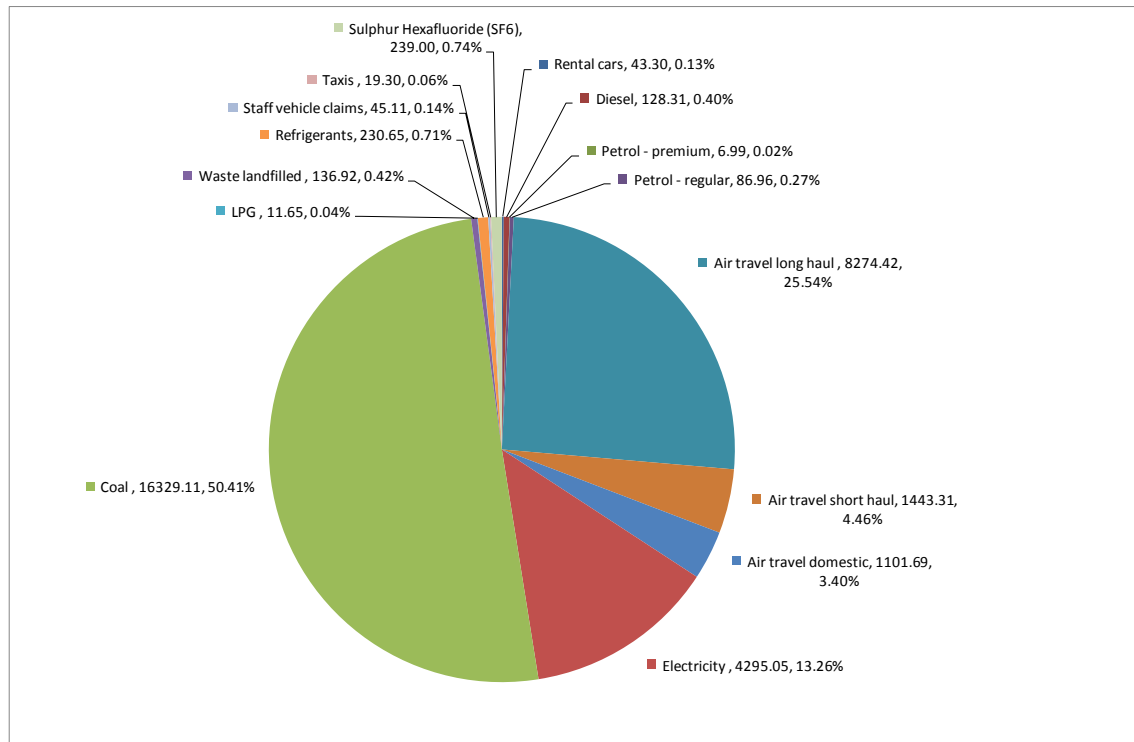
Year 1 of 3 Year Certificate Period

Consolidation approach – Operational control

Base year – 1/1/2010 to 31/12/2010

Measurement period – 1/1/2010 to 31/12/2010

Emissions source inclusions – The diagram below shows the operational GHG emissions for University of Canterbury by emissions source. University of Canterbury’s total emissions for this period were 32,392 tonnes carbon dioxide equivalents (CO₂e) comprising 17,076 tonnes CO₂e Scope 1, 4,295 tonnes CO₂e Scope 2 and 11,021 tonnes CO₂e Scope 3 emissions.



Emissions source exclusions – Some emissions sources were excluded, as listed in the table below:

GHG emissions source	Reason for exclusion
Laundry services - transport to and from laundry site	Emissions were estimated to be de minimis, as calculated in Appendix 1. Note that emissions associated with the actual laundering process are considered to be outside the scope of the organisation measurement.
Cleaning services - contractor transport to and from campus	Emissions were estimated to be de minimis, as calculated in Appendix 1.
Staff travel	Emissions were estimated to be de minimis, as calculated in Appendix 1.

Summary of CEMARS[®] certification:



University of Canterbury

Year 1 of 3 Year Certificate Period

GHG emissions source	Reason for exclusion
accommodation	
Postage/Courier/Freight	Emissions were estimated to be de minimis, as calculated in Appendix 1.
Printing (paper consumption)	Unable to source appropriate data. Initial emissions were estimated to be ~ 3% of total, as calculated in Appendix 1. Therefore inclusion of paper will be investigated for future reporting periods
Building construction	Some construction activities may have occurred, however appropriate data was unable to be sourced.
Waste to landfill for sites other than the main university campus	Data was unable to be obtained for this reporting period
Biological waste incinerated offsite	Data was unable to be obtained for this reporting period
Miscellaneous gases	Some bottle CO ₂ and CH ₄ was purchased but estimated GHG emissions were well below the 1% <i>de minimis</i> threshold.

Emissions reduction commitments – University of Canterbury has developed a GHG emissions reduction plan. Some projects in this plan include:

- Increase the coal boiler combustion and operational efficiency by upgrading the boiler management control
- Reduce air travel by provision of leading edge video conferencing facilities across campus
- Benchmarking high energy use in buildings and subsequent application of remedial measures

Verified by – Green Fox Limited

Threshold of materiality – Excluded emissions do not exceed 5% of the total footprint for organisation stated.

Level of assurance – Reasonable

Certification status – CEMARS certified organisation

Certificate number – 2011204J – Year 1

Valid until – 19 April 2015

20 Kirkwood Avenue, Ilam, Christchurch 8041, New Zealand. Telephone: +64 (0)3 366 7001.
Email: info@canterbury.ac.nz Web: www.info@canterbury.ac.nz