

Summary of carboNZero certification:



Ricoh New Zealand Limited

Ricoh New Zealand Limited meets the requirements of carboNZero^{Cert™} certification having measured its greenhouse gas emissions in compliance with the requirements of ISO 14064-1:2006 including additional life cycle emissions associated with the selected services, committed to managing and reducing its emissions and neutralised its remaining unavoidable emissions through the cancellation of an appropriate number of verified carbon credits in respect of the operational activities of organisation and energy efficient photocopying services.

RICOH

Introduction¹ – Ricoh New Zealand Ltd (Ricoh) is a wholly owned subsidiary of Ricoh Company Ltd., Japan. The company's New Zealand head office is located in central Auckland, with branch offices in the five main regional centres including Hamilton, Palmerston North, Wellington, Christchurch and Dunedin. In addition, there is a national network of dealers and service agents to provide sales, service and support in all areas of the country. Ricoh products and services provide customers with tools to lower cost of ownership by providing guidance for using fewer consumables and saving energy while enhancing productivity. Ricoh recognises environmental sustainability as an integral part of all business activities. Ricoh assumes responsibility for sustainability and approaches this on a company-wide basis. It is Ricoh's goal to consistently maintain an industry leadership position in this area, and continually innovate with sustainability in mind. To demonstrate this leadership Ricoh have measured and offset the emissions associated with customer electricity use in their energy efficient photocopiers.

Boundary – the diagram below shows the organisational structure used for describing Ricoh's greenhouse gas (GHG) emissions inventory, and what business units were included in the carboNZero certification. Yellow business units were excluded from the certification. The yellow business units were excluded from the measurement since they do not feature the latest energy efficiency technology².

¹ **Disclaimer:** This Disclosure Statement is a summary of the verified information considered for certification and the certification decision. It should not be taken to represent the full submission for certification. While every effort has been made to ensure that the information in this Disclosure Statement is accurate and complete, Landcare Research does not, to the maximum extent permitted by law, give any warranty or guarantee relating to the accuracy or reliability of the information.

Summary of carboNZero certification:



Ricoh New Zealand Limited

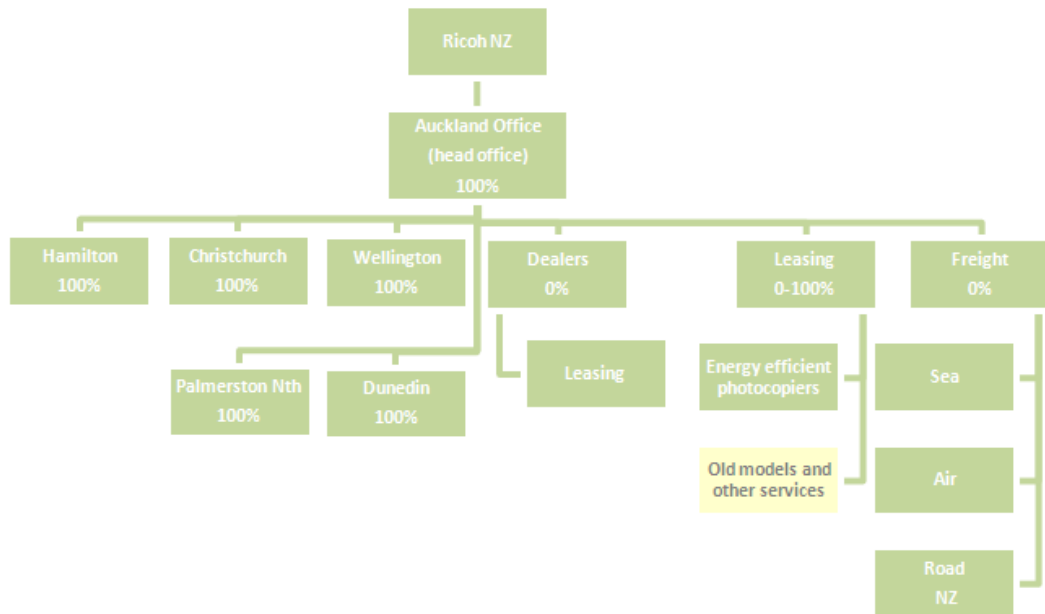


Figure 1: Ricoh structure.

For the certified service², additional life cycle GHG emissions were included in the inventory as shown in the diagram below. The yellow life cycle stage was not required and not measured for the service inventory. The striped life cycle stages are covered except for the emissions source exclusions listed below.

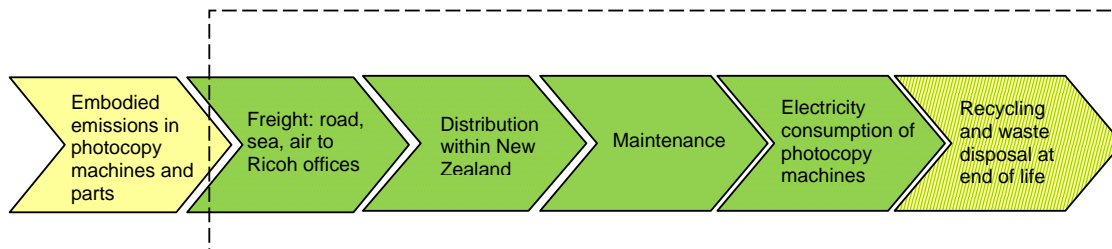


Figure 2: Service boundaries of Ricoh’s carboNZero certified photocopier machines.

Consolidation approach – operational control

Base year – 01/04/2007 to 31/03/2008

Measurement period – 01/04/2010 to 31/03/2011

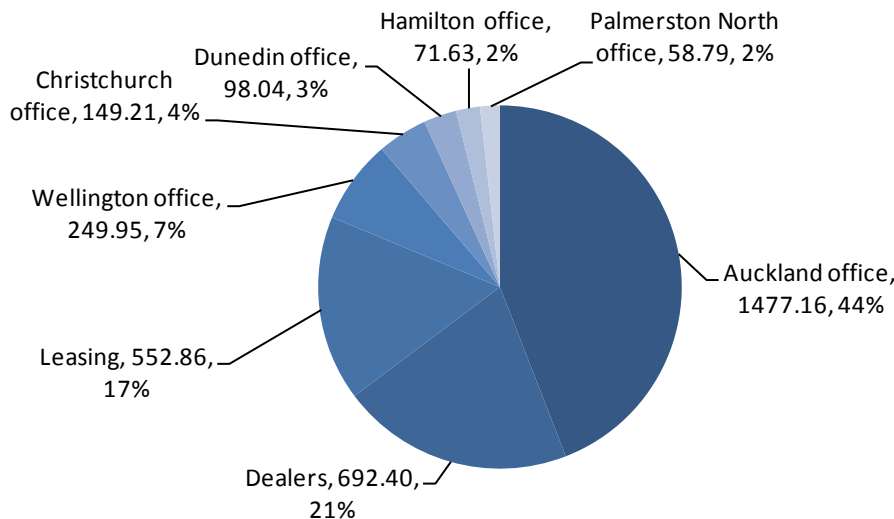
Emissions source inclusions – the diagram below shows the operational GHG emissions for Ricoh by emissions source. Ricoh’s total emissions for this period were 3,350.40 tonnes carbon dioxide equivalents (CO₂e) comprising 791.41 tonnes CO₂e Scope 1, 121.60 tonnes CO₂e Scope 2 and 2,437.02 tonnes CO₂e Scope 3 emissions.

Summary of carboNZero certification:



Ricoh New Zealand Limited

Operational Scope 3 emissions account for 1,191.76 tonnes. Emissions from the electricity use of leased consumers photocopy machines and dealers' activities were 17% (552.86 tonnes CO₂e) and 21% (692.40 tonnes CO₂e) of all Scope 3 emissions.



Emissions source exclusions – the following emissions sources were excluded due to data unavailability outside Ricoh's control:

- Embodied emissions in replacement parts
- Non-recyclable waste at end-of-life of devices
- Third party warehouse electricity use

Emissions reduction commitments – Ricoh has developed a GHG emissions reduction plan. Some projects in this plan include:

- Ensuring that prior to leaving the Ricoh premises, all machines have energy save and auto timer modes activated. Also, technicians are to ensure customers are aware of energy saving modes.
- To periodically review freight methods and frequencies.
- To work with Ricoh dealers to provide information and support in the reduction of GHG emissions e.g. recycling solutions for waste, reduction in freight and courier movements etc.
- When selecting fleet vehicles to prioritise cars that use 91 octane fuel and those that are classed in the top three most fuel efficient in New Zealand in their class

Emissions reduction report against last year's plan – This is Ricoh's fourth emissions inventory report. Ricoh's total GHG emissions were 3,350.04 tonnes of CO₂e for the period 1/04/2010 to 31/03/2011, whilst there were 2,503.80 tonnes of CO₂e for the period 1/04/2009 to 31/03/2010. This is an increase of 34% (797.47 tonnes CO₂e). The increased emissions are due to a combination of increases in air and sea freight and the inclusion of the sales team fuel consumption and increased electricity consumption of leased machines. It should be noted

Summary of carboNZero certification:



Ricoh New Zealand Limited

that the number of leased machines increased from 15,847 to 19,137 (inclusive of dealers' machines) between measurement periods. Ricoh has chosen to use number of leased machines as a Key Performance Indicator. The emission intensity was 0.17 tonnes CO₂e per machine compared to 0.16 tonnes CO₂e last year. This is equal to an increase of 9%.

Offset – 2,658 tonnes CO₂e. VERs from Beijing 48MW Guanting Windpower Project credits. Serial numbers 10009310 - 10011967 have been cancelled (or equivalent) on the Markit Environmental Registry. Carbon credits were not required to offset emissions from Ricoh dealers' as they are individually certified and emissions are offset by the dealers. Also the use of Wellington Combined Taxis did not require offsetting as they are a carboNZero certified service.

Verified by –ASUREQuality Limited

Threshold of materiality – excluded emissions do not exceed 5% of the total footprint for organisation and 5% of the total footprint for additional LCA GHG emissions for service boundary stated.

Level of assurance – Organisational inventory – verified to reasonable assurance and additional LCA GHG emissions for service – verified to limited assurance

Certification status – carboNZero certified "organisation" and "service" covering electricity consumption and maintenance of leased-out photocopy machines.

Certificate number – 2011108J

Valid until – 31 July 2014