

Summary of carboNZero certification:



Orbit Corporate Travel (Part of the House of Travel Group)

Year 1 of 3 Year Certificate Period

Orbit Corporate Travel (part of the House of Travel Group) meets the requirements of carboNZero^{Cert™} certification having measured its greenhouse gas emissions in compliance with ISO 14064-1:2006, committed to managing and reducing its emissions and neutralised the remaining unavoidable emissions in respect of the operational activities of its organisation.



Introduction¹ – Orbit Corporate Travel is the specialised business travel division of the House of Travel Group – one of New Zealand's largest and most trusted travel brands.

Orbit's vision is to be the travel service provider of choice for NZ business, by always delivering businesses the most effective travel solution possible.

The Orbit businesses are 100% New Zealand owned and operated with shared ownership between local directors and House of Travel. The local owners, senior management and staff of our offices are committed to reducing our impact on the environment.

The Orbit offices in Auckland, Hamilton and Wellington have all been certified as carboNZero organisations and it is intended that Christchurch Nelson and Dunedin will all attain certification by the end of 2011.

Orbit Corporate Travel is committed to lessening its impact on the environment and is working towards achieving carboNZero certification.

Part of this commitment from Orbit involves providing it's clients with market leading environmental impact reports.

Boundary – Figure 1 below shows the organisational structure used for describing the organisation's greenhouse gas (GHG) emissions inventory, and what business units were included in the inventory in the context of the entire organisational profile. The parts of the structure (business units) in blue have been identified as being within this emissions inventory. Business units excluded from the inventory are shown in orange.

¹**Disclaimer:** This Disclosure Statement is a summary of the verified information considered for certification and the certification decision. It should not be taken to represent the full submission for certification. Whilst every effort has been made to ensure that the information in this Disclosure Statement is accurate and complete, carboNZero Holdings Ltd does not, to the maximum extent permitted by law, give any warranty or guarantee relating to the accuracy or reliability of the information.

Orbit Corporate Travel (Part of the House of Travel Group)

Year 1 of 3 Year Certificate Period

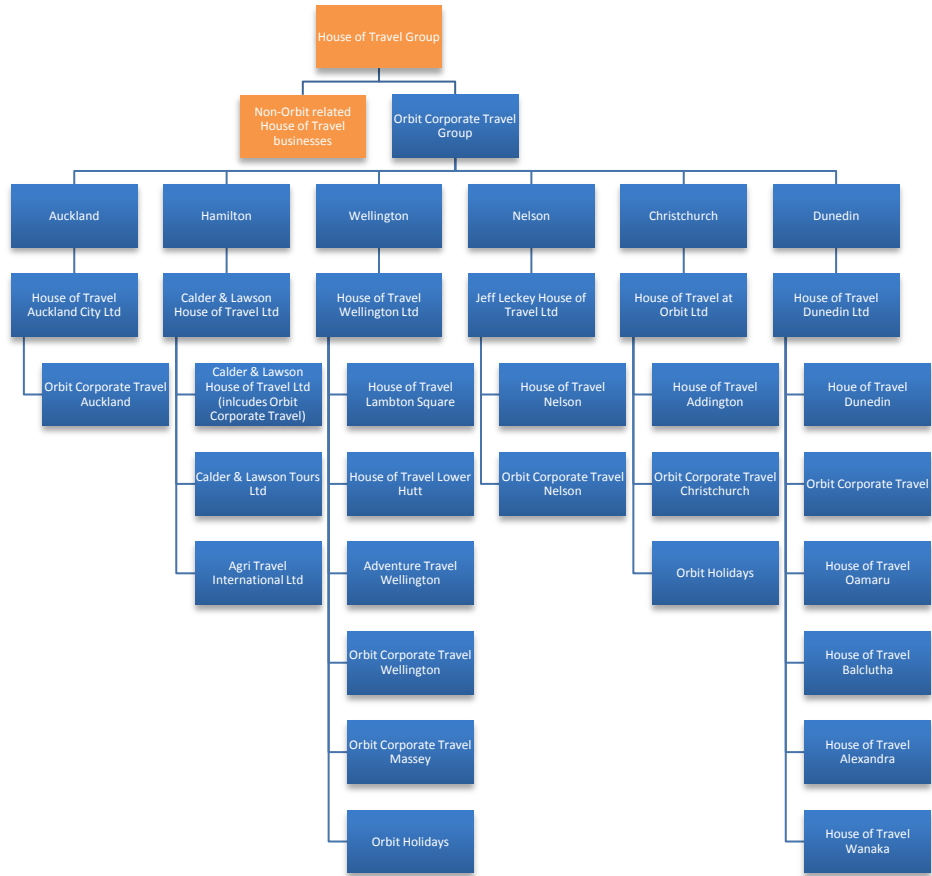


Figure 1: Organisational structure showing business units included and excluded.

Consolidation approach – The operational control consolidation approach has been used to account for operational emissions with reference to the methodology described in the GHG Protocol and ISO 14064-1 standards.

Base year – 01/06/2010 to 31/05/2011

Measurement period – 01/06/2010 to 31/05/2011

Emissions source inclusions – The operational GHG emissions for the organisation by emissions source are shown in Figure 2 below.

Orbit Corporate Travel (Part of the House of Travel Group)

Year 1 of 3 Year Certificate Period

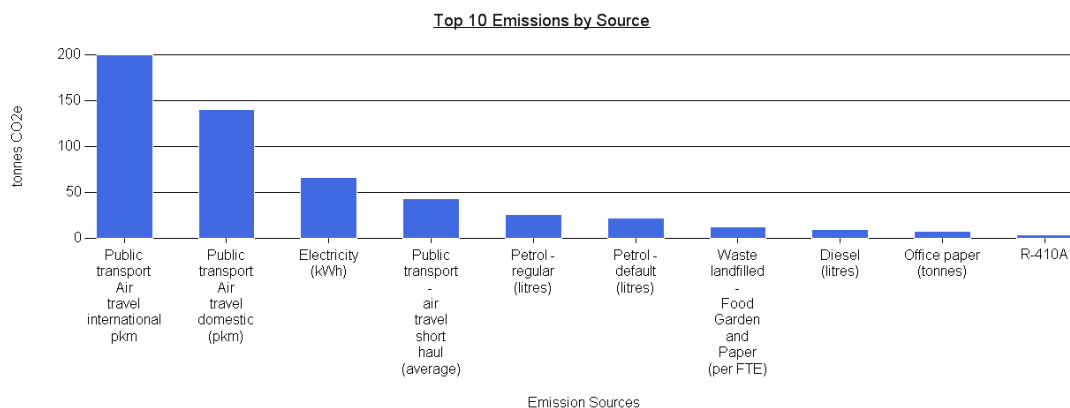


Figure 2: GHG emissions by emissions source.

Emissions as tonnes of carbon dioxide equivalents (tCO₂e) for this period were:

Scope 1: 40.27 tCO₂e
 Scope 2: 66.59 tCO₂e
 Scope 3: 435.88 tCO₂e
 Total: 542.74 tCO₂e

The Scope 3 total includes 7.96 tonnes CO₂e for additional emissions (Office Paper).

Emissions intensity – Total gross GHG emissions per:

- million dollars turnover (tCO₂e/\$M) is 1.82
- FTE (tCO₂e/FTE) is 1.87

Emissions source exclusions – The following emissions sources were excluded from the inventory for this measurement period:

- Freight/Courier/Post for all as is <1% of total emissions.
- Travel Awards/Incentives for all as is provided free for personal use and outside the organisational boundary.
- Train/Shuttle/Bus for Wellington as data is available in dollars, but cannot convert to the relevant emission factors based on km.
- Refrigerant for Wellington as the data was not available from landlord.
- Rental vehicles for Auckland, Hamilton & Nelson as is <1% of total emissions

Emissions reduction commitments – A GHG emissions management plan and reduction targets have been developed.

Summary of carboNZero certification:



Orbit Corporate Travel (Part of the House of Travel Group)

Year 1 of 3 Year Certificate Period

	2010/11 Emissions (tonne)	Target % Reduction for 2011/12 emissions	Target 2011/12 Emissions	Overall target for 2011/2012 is to reduce emissions from
Auckland Tonnes per \$M Turnover	1.99	2-2.5%	1.95	Overall target for 2011/2012 is to reduce emissions from 1.99 to 1.94 tonnes of Co2e per \$M Turnover
Hamilton Tonnes per \$M Turnover	3.2	2-2.5%	3.14	3.2 to 3.14 tonnes of Co2e per \$M Turnover
Wellington Tonnes per \$M Turnover	0.67	2-2.5%	0.66	0.67 to 0.66 tonnes of Co2e per \$M Turnover
Nelson Tonnes per \$M Turnover	3.06	2-2.5%	3.00	3.06 to 3.00 tonnes of Co2e per \$M Turnover
Christchurch Tonnes per \$M Turnover	2.42	2-2.5%	2.37	2.42 to 2.37 tonnes of Co2e per \$M Turnover
Dunedin Tonnes per \$M Turnover	1.86	2-2.5%	1.82	1.86 to 1.82 tonnes of Co2e per \$M Turnover

Offset – 308 tonnes CO₂e from WINDFARM (Tararua TrustPower) credits Serial numbers 343977-344284 have been cancelled (or equivalent) on Markit Environmental Registry and 235 tonnes CO₂e from EBEX21 PFSI Compliance credits. Serial numbers 806519-806753 have been cancelled (or equivalent) on New Zealand Emissions Unit Register.

Verified by – Green Fox Limited

Data quality score – Good

Threshold of materiality – Excluded emissions do not exceed 5% of the total footprint for organisation stated.

Level of assurance – Reasonable

Certification status – carboNZero certified organisation

Certificate number – 2011209J

Valid until – 22 April 2015

455 Grey Street, Hamilton 3216, New Zealand. Telephone: +64 (0)7 857 0396.
Email: jamiem@hot.co.nz Web: www.houseoftravel.co.nz