

Summary of carboNZero certification:



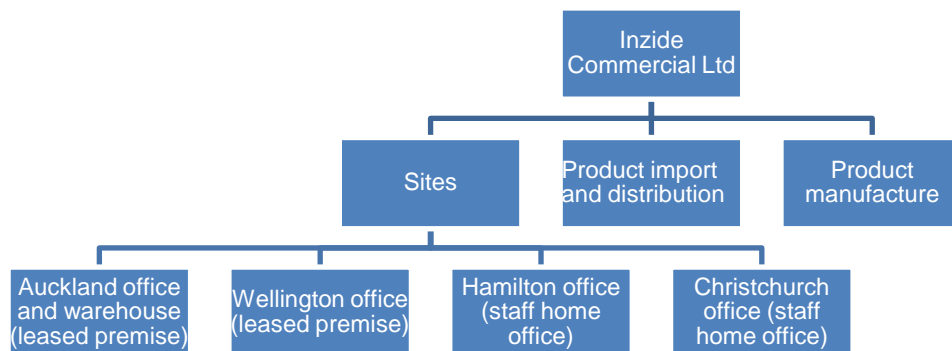
Inzide Commercial Limited (formerly Interface NZ Limited)

Inzide Commercial Limited (formerly Interface NZ Limited) meets the requirements of carboNZero^{Cert™} certification having measured its greenhouse gas emissions in compliance with ISO 14064-1:2006, committed to managing and reducing its emissions and neutralised its remaining unavoidable emissions through the cancellation of an appropriate number of verified credits in respect of the operational activities of its organisation.



Introduction¹ – Inzide Commercial Limited (formerly Inzide Commercial Limited) provides floor covering systems with a focus on carpet tiles, vinyl, and melded fabrics. Inzide Commercial Limited’s purpose is to “provide sustainable design-led flooring solutions”. As part of their business, Inzide Commercial Limited offer various product support services such as design and visualisation, installation methods, leasing options, and consultancy (e.g. product selection, project management, maintenance and cleaning regimes).

Boundary – the diagram below shows the organisational structure used for describing Inzide Commercial Limited’s greenhouse gas (GHG) emissions inventory, and what business units were included in the carboNZero certification. Yellow business units were excluded from the certification.



Consolidation approach – Operational control

Base year – 01/04/2007 to 31/03/2008

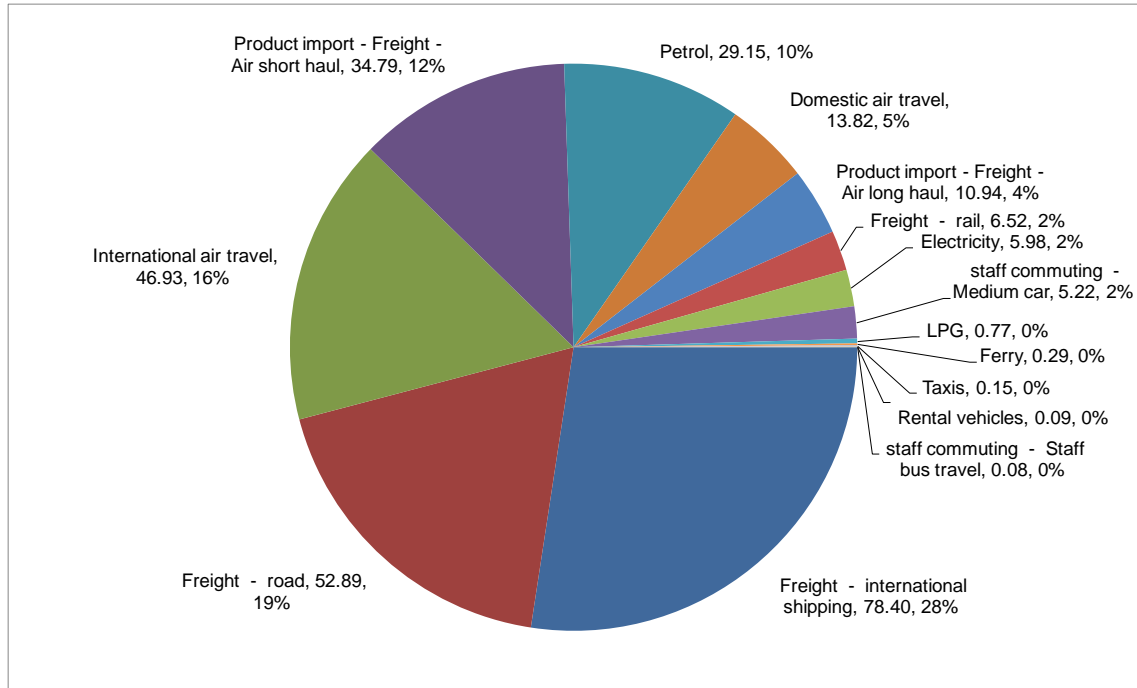
Measurement period – 01/04/2010 to 31/3/2011

Emissions source inclusions – The diagram below shows the operational GHG emissions for Inzide Commercial Limited by emissions source. Inzide Commercial Limited’s total emissions for this period were 286 tonnes carbon dioxide equivalents (CO₂e) comprising 29 tonnes CO₂e Scope 1, 4 tonnes CO₂e Scope 2 and 253 tonnes CO₂e Scope 3 emissions.

¹ **Disclaimer:** This Disclosure Statement is a summary of the verified information considered for certification and the certification decision. It should not be taken to represent the full submission for certification. While every effort has been made to ensure that the information in this Disclosure Statement is accurate and complete, Landcare Research does not, to the maximum extent permitted by law, give any warranty or guarantee relating to the accuracy or reliability of the information.

Summary of carboNZero certification:

Inzide Commercial Limited (formerly Interface NZ Limited)



Emissions source exclusions – the following emission sources were excluded from the measurement:

- Waste to landfill
- Temporary product storage at the freight forwarder
- Staff travel accommodation

Emissions reduction commitments – Inzide Commercial Limited has developed and updated a GHG emissions management and reduction plan. Some projects in this plan include:

- Continue telephone conference calling with regional salespeople.
- Continue running competitions related to vehicle fuel efficiency.
- Be explicit with customers about the carbon impact of air-freight.
- Increase Coastal and direct to Port Shipping
- Investigate opening a warehouse in the South Island

Emissions reduction report against last year's plan – There has been a 2.56tCO₂e reduction in emissions from the base year. The following initiatives have been implemented:

- All vehicles in the fleet are now Toyota Prius hybrid vehicles
- Utilisation of more rail freight and coastal shipping as opposed to road freight
- Increased direct to port of project deliveries to reduce freight emissions
- Reduced air freight

Offset – 285 tonnes CO₂e EBEX21 PSFI compliance credits from native forest regeneration projects. Serial numbers 801514 -801798 have been cancelled (or equivalent) on the New Zealand Emission Unit Register. Carbon credits were not required to offset emissions from purchased electricity for the Auckland and Christchurch site because all electricity is purchased from Meridian Energy.

Summary of carboNZero certification:



Inzide Commercial Limited (formerly Interface NZ Limited)

Verified by –ASUREQuality

Threshold of materiality – excluded emissions do not exceed 5% of the total footprint for organisation and product boundary stated.

Level of assurance – Reasonable assurance

Certification status – carboNZero certified “organisation” including freight associated with importation and distribution of products.

Certificate number – 2011194J

Valid until – 31 July 2014

Inzide Commercial Limited, 52B Arrenway Drive, Rosedale, Auckland 0632, New Zealand.
Tel: +64 (0)9 441 9850. Email: enquiries@inzidecommercial.co.nz Web: www.inzidecommercial.co.nz