

Christchurch International Airport Limited

Year 2 of 3 Year Certificate Period

Christchurch International Airport Limited meets the requirements of carboNZero^{Cert™} certification having measured its greenhouse gas emissions in compliance with ISO 14064-1:2006, committed to managing and reducing its emissions, and neutralised the remaining unavoidable emissions in respect of the operational activities of its organisation.



Introduction¹ – Christchurch International Airport Limited owns and operates New Zealand’s key southern air travel gateway and is a vital hub for the South Island’s tourism and freighting industries. Christchurch International Airport Limited’s core business is the efficient and safe operation of Christchurch International Airport.

Christchurch International Airport Limited was established as a limited liability company in 1988 and ownership is now shared 75% by Christchurch City Holdings Limited and 25% by the New Zealand Government. The airport currently employs staff in the areas of administration, airport fire services, customer services, management, property, facilities services and travel and information services.

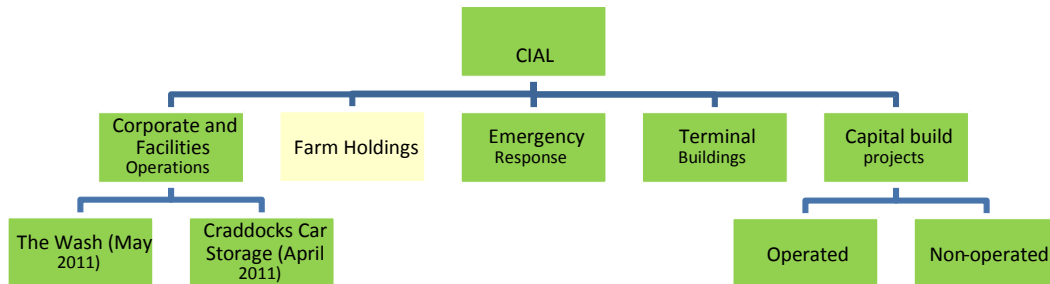
Programmes have progressively been implemented to ensure best practice environmental management at the airport. Examples include an environmental audit programme for Christchurch International Airport Limited and airport businesses and the undertaking of comprehensive energy audits of terminal operations. Programmes are also in place to ensure best practice initiatives in the areas of storm water discharge, solid waste disposal, energy conservation, air, and water quality.

Boundary – the diagram below shows the organisational structure used for describing Christchurch International Airport Ltd’s greenhouse gas (GHG) emissions inventory, and what business units were included in the carboNZero certification. With the exception of Farm Holdings, yellow business units were measured but excluded from the certification. Farm Holdings was not been measured because the land has been leased out and CIAL have no operational control of the activities occurring on this land

¹ **Disclaimer:** This Disclosure Statement is a summary of the verified information considered for certification and the certification decision. It should not be taken to represent the full submission for certification. While every effort has been made to ensure that the information in this Disclosure Statement is accurate and complete, Landcare Research does not, to the maximum extent permitted by law, give any warranty or guarantee relating to the accuracy or reliability of the information.

Christchurch International Airport Limited

Year 2 of 3 Year Certificate Period



Consolidation approach – operational control

Base year – 01/07/2006 to 30/6/2007

Measurement period – 01/07/2010 to 30/06/2011

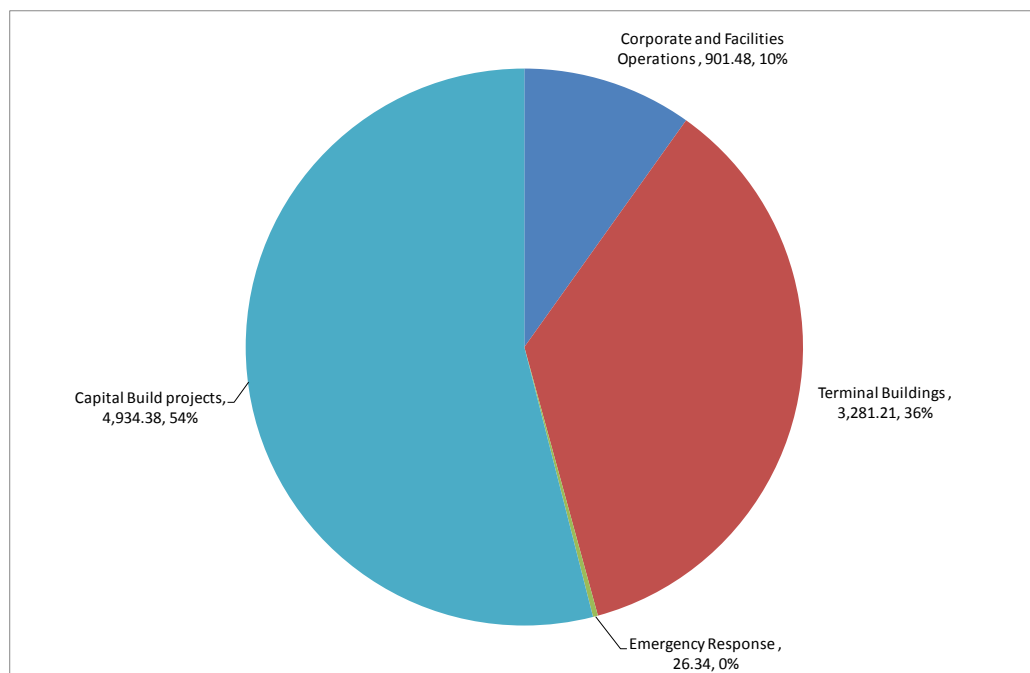
GHG emissions source inclusions – the diagram below shows the operational GHG emissions for Christchurch International Airport Ltd by emissions source. Christchurch International Airport Ltd’s total emissions for this period were 9,146.68 tonnes carbon dioxide equivalents (CO₂e) comprising:

Scope 1: 1,851.60 tonnes CO₂e

Scope 2: 1,684.11 tonnes CO₂e

Scope 3 (operational): 673.32 tonnes CO₂e

Scope 3 (one-off construction emissions): 4,937.65 tonnes CO₂e



Christchurch International Airport Limited

Year 2 of 3 Year Certificate Period

GHG emissions source exclusions – The following emissions sources were excluded from the emissions inventory:

- Staff travel accommodation
- Rental vehicles
- Airline quarantined waste
- Couriers
- Tenant electricity
- Aircraft Movements
- Constructor fuel emissions associated with construction projects

GHG emissions reduction commitments – Christchurch International Airport Ltd has developed a GHG emissions reduction plan for the 2011/2012 year. Some projects in this plan include:

- Carry out a feasibility study on electric heat pumps using groundwater water as an alternative to diesel boilers and current chiller load.
- Commission a 3 month audit of all lighting used in CIAL building.
- Implement the groundwater abstraction and discharge system in the newly opening Integrated Terminal Project.
- Assess options for development of Green Precincts within new property developments of CIAL Land.

GHG emissions reduction report against last year’s plan –

Below are some of the actions taken in 2010/2011 aimed at reducing GHG emissions arising from CIAL operations, whilst table 1 provides a summary of emissions by reporting period:

- Implemented a number of the Energy Management Opportunities from the previous year’s BMS review, which resulted in a 7% reduction in energy consumption from the operation of the Terminal.
- Increased diversion of waste from landfill through recycling programmes from 15% to 29%.
- The use of Recycled Asphalt Pavement (RAP) and COOL Pave in the annual Runway Maintenance Programme increased from the previous reporting period.
- Energy Audit of proposed Integrated Terminal Building and International Airside Retail Development were completed.

Table 1. Comparison of emissions by reporting period.

Financial Year	Year	Period 1/7/06 to 30/6/07	Period 1/7/07 to 30/6/08	Period 1/7/08 to 30/6/09	Period 1/7/09 to 30/6/10	Period 1/7/10 to 30/6/11
Comparable operational emissions/arrival	kgCO ₂ e/arrival	0.65	0.82	0.68	0.69	0.70
Comparable operational emissions	tCO ₂ e	3,573	4,846	4,019	4,168	4,030

Summary of carboNZero certification:

Christchurch International Airport Limited

Year 2 of 3 Year Certificate Period

Offset – 4210 tonnes CO₂e. 2106 VCS VCUs from the ‘Burwood Landfill Gas to Queen Elizabeth II Park’ project and 2104 VCS VCUs from the ‘Beijing 48 MW Guanting Wind Power’ Project. Serial numbers 133-4963309-4965412-VCU-008-APX-CN-1-84-18012008-27122008-0 (Beijing Guanting Wind farm) and 547-24421427-24423532-VCU-001-TZ1-NZ-13-272-01082007-31122007-0 (Burwood Landfill Gas to Queen Elizabeth II Park) have been cancelled on the Markit Environmental Registry. Emissions from one-time emissions from new building construction (4,934 tCO₂e) were excluded from the offset required for certification.

Verified by – Deloitte.

Threshold of materiality – excluded emissions do not exceed 5% of the total footprint for organisation and product boundary stated.

Level of assurance – Reasonable assurance

Certification status – carboNZero certified “organisation” covering Terminal Buildings (operations), corporate operations, emergency response, airfield and infrastructure maintenance.

Certificate number – 2010145J – Year 2

Valid until – 31 October 2013

Christchurch International Airport Limited, Level 4, Car Park Building, Christchurch Airport, Memorial Ave,
Christchurch, 8544, New Zealand

Tel: +64 (0)3 358 5029, Email: enquiries@cial.co.nz Web: www.christchurch-airport.co.nz